

GUADALMINA BAJA, SAN PEDRO DE ALCANTARA



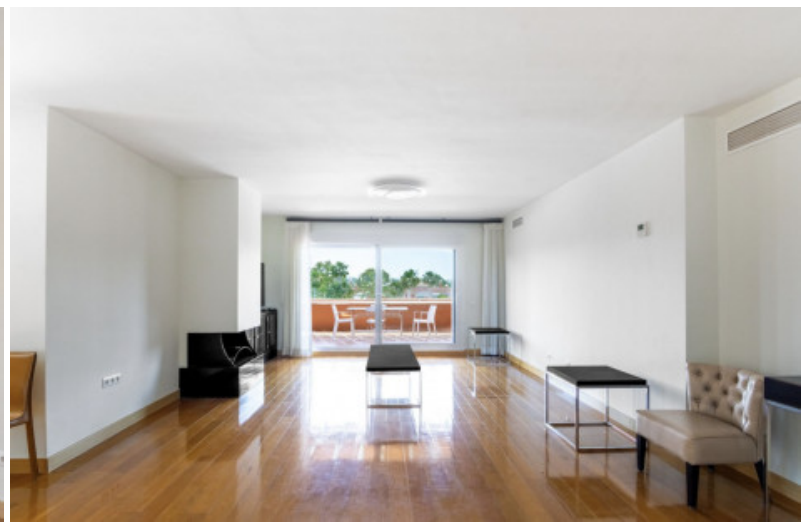
bedrooms **3** bathrooms **3** built _{m²} **261** terrace _{m²} **47**

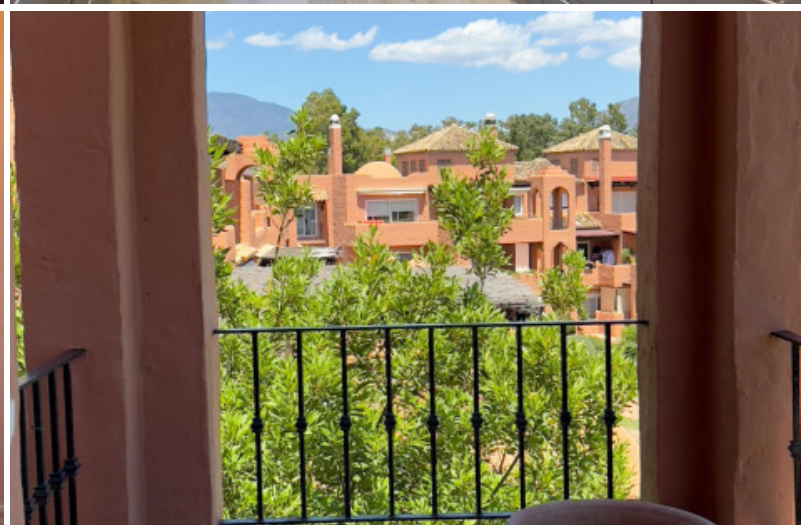
PENTHOUSE ALHAMBRA DEL GOLF – CONTEMPORARY ELEGANCE IN GUADALMINA BAJA

Located in the prestigious residential area of Guadalmazza Baja, this refined three-bedroom penthouse in Alhambra del Golf offers a rare opportunity to enjoy sophisticated coastal living in one of the Costa del Sol's most peaceful and desirable neighbourhoods. Positioned within the Estepona municipality, this prime location delivers a tranquil setting with effortless access to beaches, dining, schools, golf, and daily conveniences. Originally completed in 1998, the penthouse spans a total of 261 square metres, of which 47 square metres are dedicated to private terraces, providing ample space for indoor-outdoor living.

The layout is thoughtfully designed across a single floor that prioritise comfort, flow, and natural light. Each of the three spacious bedrooms features its own en-suite ...

community -- month garbage 171 € year ibi 1.213 € year for sale **950.000 €**





Guadalmina Baja, San Pedro de Alcantara

Penthouse Alhambra del Golf – Contemporary Elegance in Guadalmina Baja

Located in the prestigious residential area of Guadalmina Baja, this refined three-bedroom penthouse in Alhambra del Golf offers a rare opportunity to enjoy sophisticated coastal living in one of the Costa del Sol's most peaceful and desirable neighbourhoods. Positioned within the Estepona municipality, this prime location delivers a tranquil setting with effortless access to beaches, dining, schools, golf, and daily conveniences. Originally completed in 1998, the penthouse spans a total of 261 square metres, of which 47 square metres are dedicated to private terraces, providing ample space for indoor-outdoor living.

The layout is thoughtfully designed across a single floor that prioritise comfort, flow, and natural light. Each of the three spacious bedrooms features its own en-suite bathroom, while a separate guest toilet adds to the convenience of the home. The southern orientation enhances the brightness throughout the day, filling the open living spaces with sun and creating a warm, inviting atmosphere. High-quality wood flooring throughout the apartment adds a sense of natural elegance, offering a timeless contrast to the apartment's modern design elements.

Large sliding glass doors connect the main living area to the expansive terrace, which provides a generous setting for outdoor dining, lounging, or quiet contemplation. Overlooking the lush, landscaped gardens and communal pool, the terrace becomes an extension of the living area and a private outdoor haven ...

Reference	613697	Beds	3	Built m ²	261
Type	Penthouse	Baths	3	Interior m ²	215
Location	Guadalmina Baja, San Pedro de Alcantara	En-suite Baths	3	Terrace m ²	47
		Guest Toilets	1	Plot m ²	---
		Pax	---		
Pool	Communal	Community	---	Levels	---
Garden	Communal	Garbage	171 € / year	Floor	---
Garage	Private	IBI	1.213 € / year	Orientation	South
Parking slots	1	Construct Year	1998	EPC	In Progress
		Renovation year	---		

For sale

950.000 €

Sale price does not include costs or taxes. Additional costs for the buyer: inscription and notary fees, ITP 7% or, alternatively 10% VAT and AJD (1.2% on the purchase price) on new properties and subject to some requisites to be met. This info is subject to errors, omissions, modifications, prior sale or withdrawal from the market. Information sheet available, Decree 218/2005 Oct. 11th.

ideal for entertaining or unwinding in the sun.

Alhambra del Golf is a secure and gated urbanisation well known for its mature greenery, Mediterranean architectural style, and community-oriented environment. Residents enjoy access to a large communal pool, barbecue area, 24-hour security, a lift, and a designated underground parking space with storage. The property is equipped with an alarm system and double-glazed windows, ensuring peace of mind while maintaining aesthetic harmony.

This prime location places the beach within just a two-minute drive, with nearby access to the calm sands of Playa del Saladillo. The area is rich in gastronomic options including the popular La Antigua and Asador Guadalmina, offering both traditional Spanish cuisine and modern culinary experiences. Daily essentials, boutiques, and cafés are conveniently located at the Guadalmina Commercial Center, while luxury shopping and services await at Centro Plaza and El Corte Inglés in Puerto Banús, both just minutes away by car.

For families, the presence of reputable international schools such as Atalaya International School makes the area attractive for year-round living. Sports and recreation are well represented with world-class facilities such as Real Club de Golf Guadalmina and Bel-Air Tennis Club, both catering to active lifestyles with professional-level amenities.

Transportation links are strong, with local bus connections to nearby towns including San Pedro, Estepona, and Nueva Andalucía, and the A-7 motorway offering direct routes to Málaga Airport and Gibraltar, each within about an hour's drive. These features make the property well-suited for both full-time residence and holiday use.

Offered unfurnished, the penthouse provides a blank canvas for personalisation, ideal for those seeking to tailor their home to their own tastes. Its size, layout, and prime position in a gated community make it an attractive proposition for buyers looking to invest in a high-quality lifestyle.

The penthouse at Alhambra del Golf blends the privacy of a luxury residence with the amenities and atmosphere of an upscale community. With its spacious layout, elegant interiors, and unbeatable location close to both the coast and the vibrant social offerings of Guadalmina Baja, it delivers a standard of living that is both refined and relaxed—ideal for discerning buyers looking to make the most of life on the Costa del Sol.