

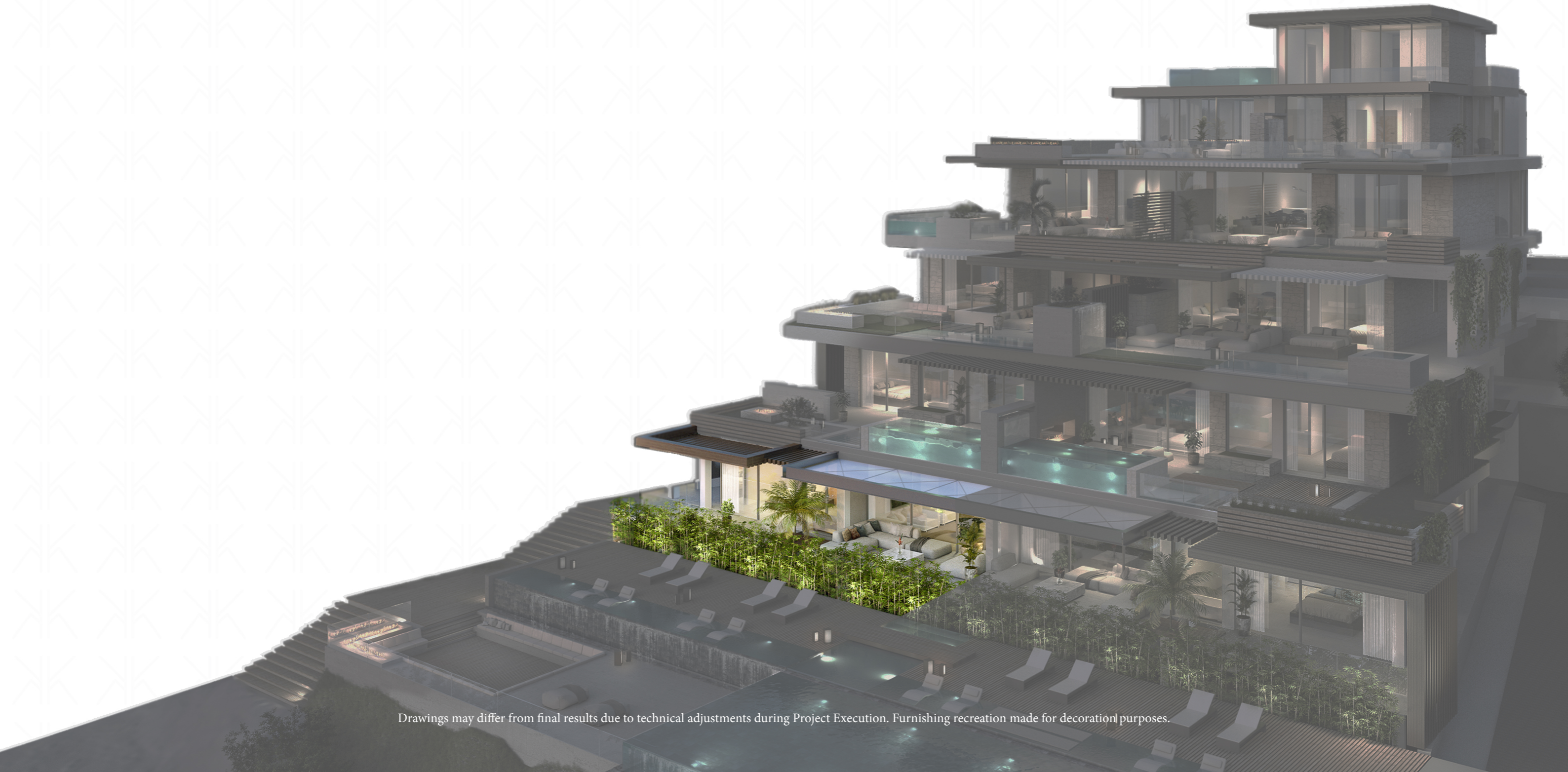
# IKKIL BAY

- ESTEPONA -

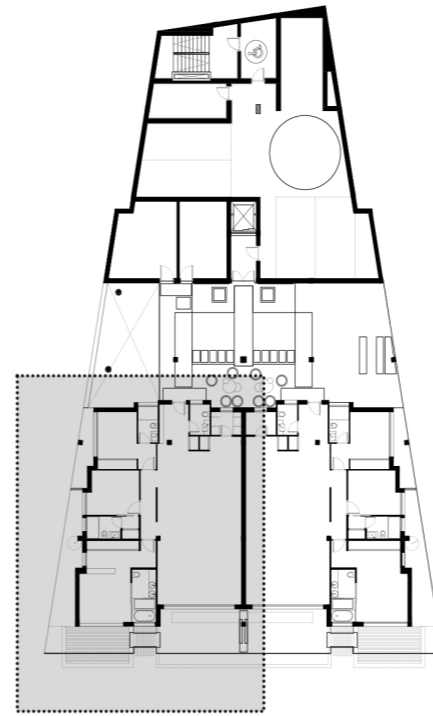


# VILLA MARE

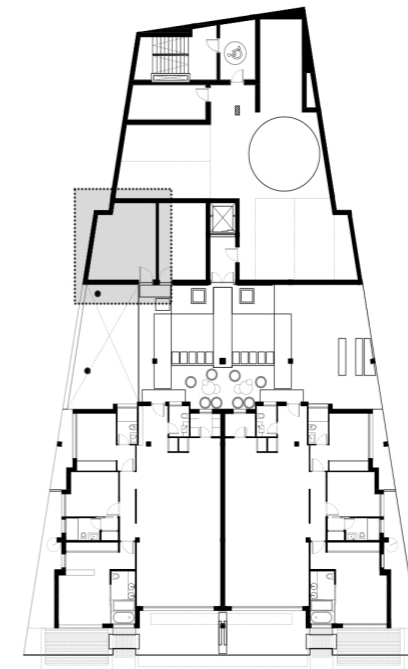
FLOOR -2 WEST



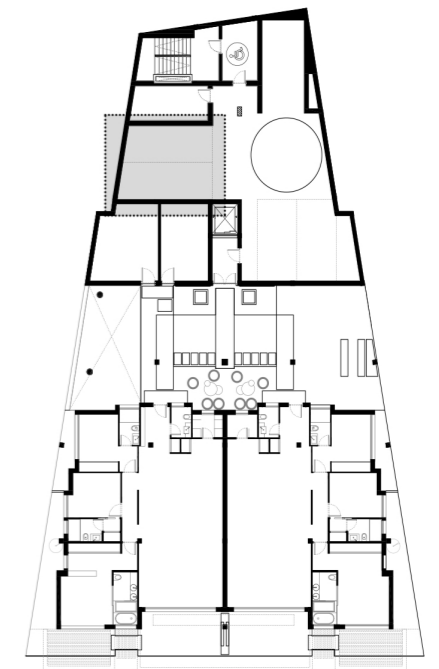
Drawings may differ from final results due to technical adjustments during Project Execution. Furnishing recreation made for decoration purposes.



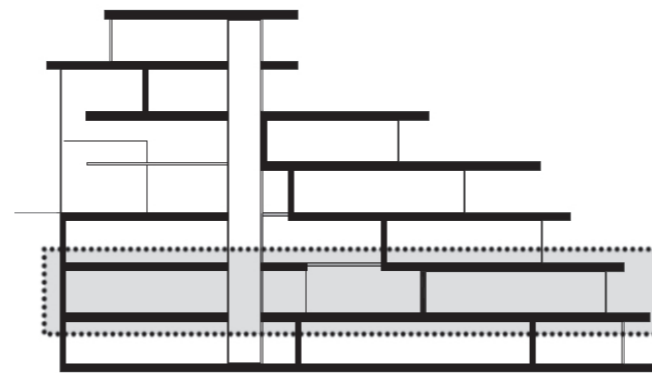
VILLA MARE  
floor -2



STORAGE ROOM  
floor -2



GARAGE  
floor -2



### VILLA MARE

Floor -2, west

Interior: 160,54 m<sup>2</sup>  
Terrace: 50,76 m<sup>2</sup>

**TOTAL BUILT SURFACE: 211,30 m<sup>2</sup>**

\* Usable Surface according to Real Decreto 218/2005: 169,15m<sup>2</sup>

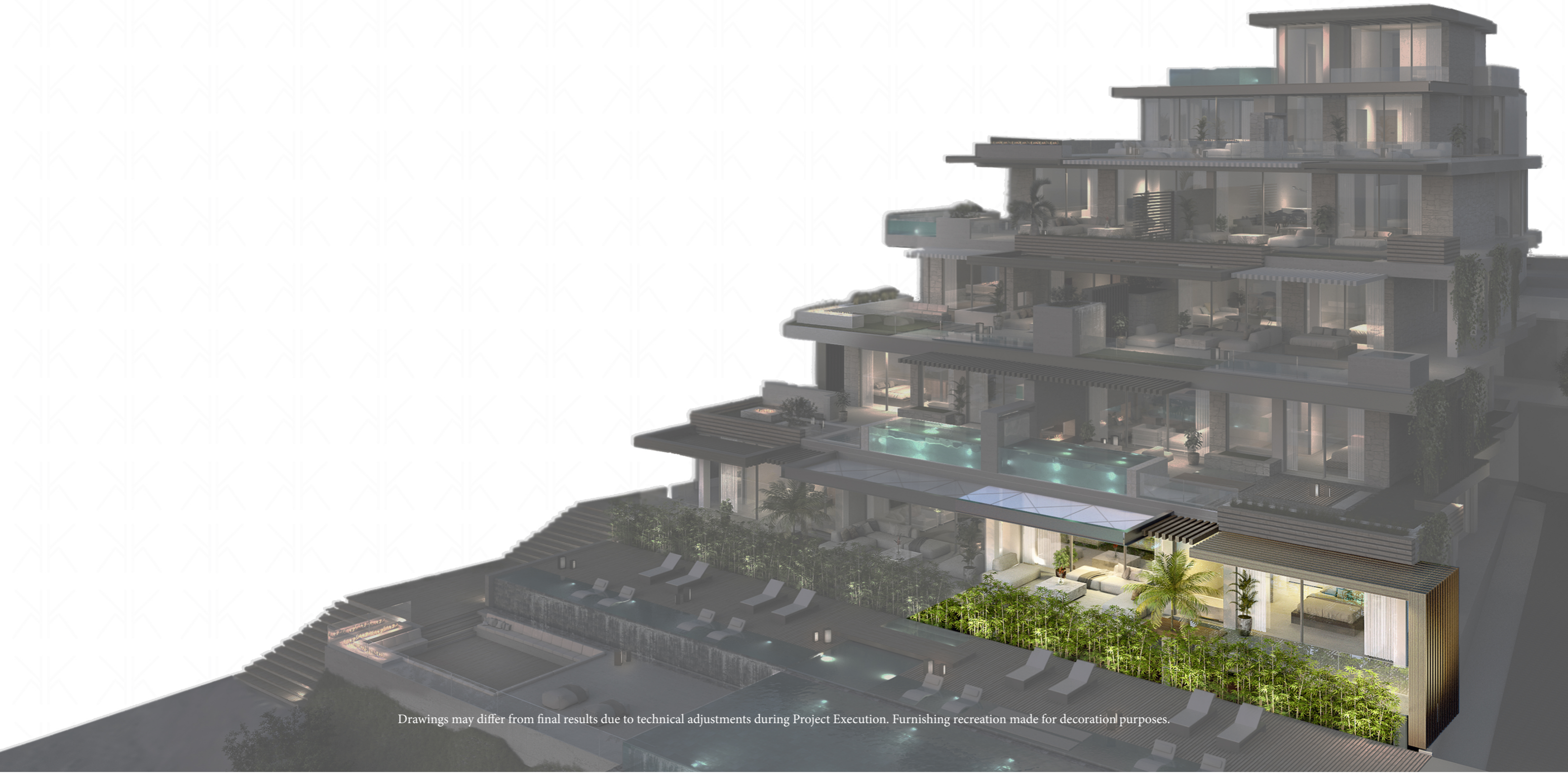
Storage room: 22,12m<sup>2</sup>  
Garage 1: 16,32 m<sup>2</sup>  
Garage 2: 15,29 m<sup>2</sup>

\*This apartment comes with two garage parking spaces.

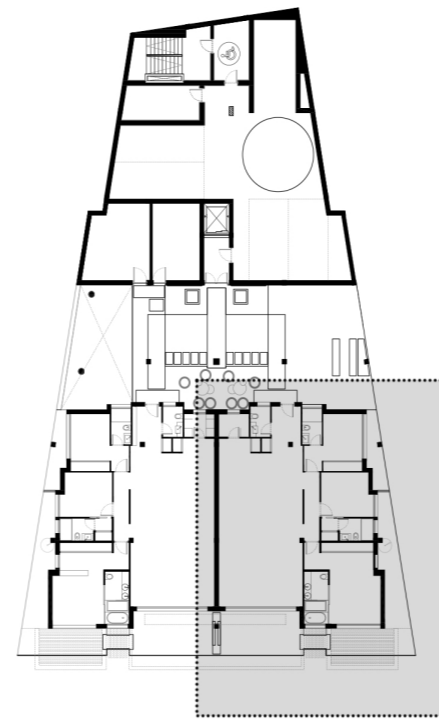
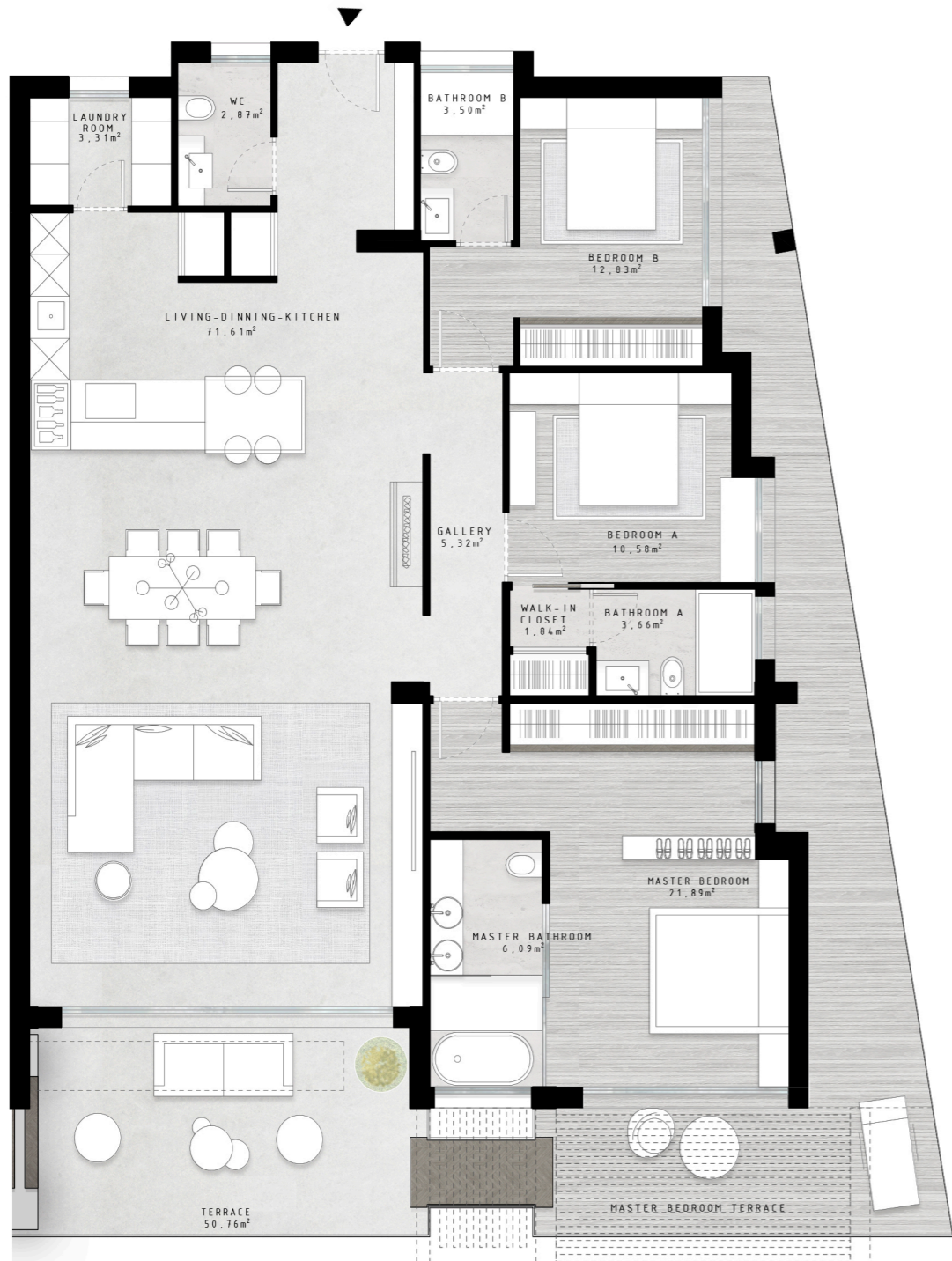
Mediterranean Sea

# VILLA FONS

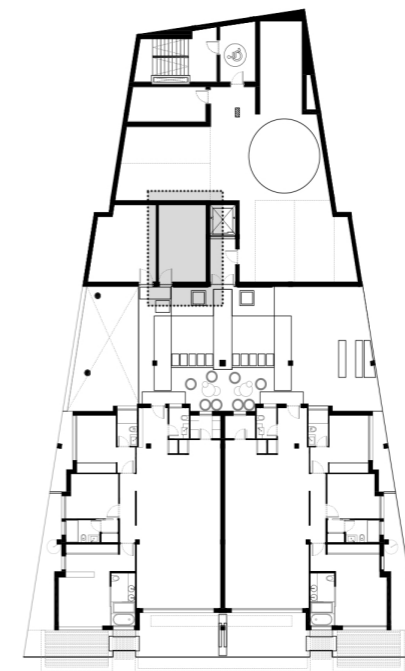
FLOOR -2 EAST



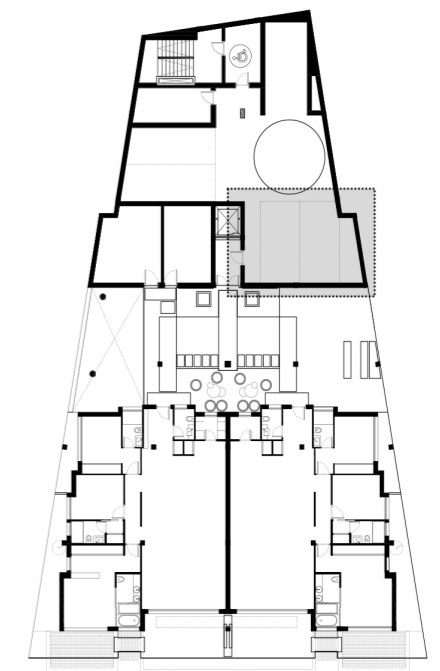
Drawings may differ from final results due to technical adjustments during Project Execution. Furnishing recreation made for decoration purposes.



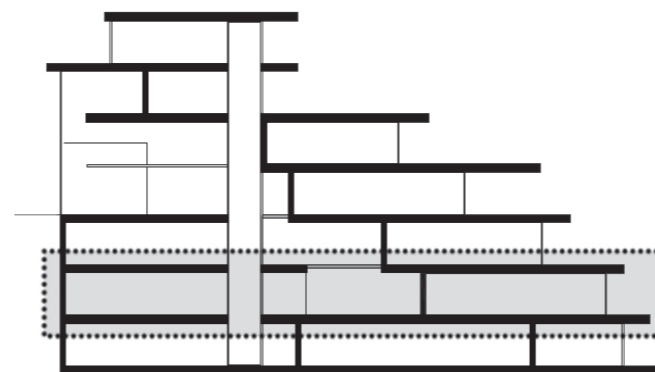
VILLA FONS  
floor -2



STORAGE ROOM  
floor -2



GARAGE  
floor -2



## VILLA FONS

Floor -2, east

Interior: 160,54 m<sup>2</sup>  
Terrace: 50,76 m<sup>2</sup>

**TOTAL BUILT SURFACE: 211,30 m<sup>2</sup>**

\* Usable Surface according to Real Decreto 218/2005: 168,89m<sup>2</sup>

Storage room: 17,36m<sup>2</sup>  
Garage 1: 15,41 m<sup>2</sup>  
Garage 2: 20,99 m<sup>2</sup>

\*This apartment comes with two garage parking spaces.

Mediterranean Sea

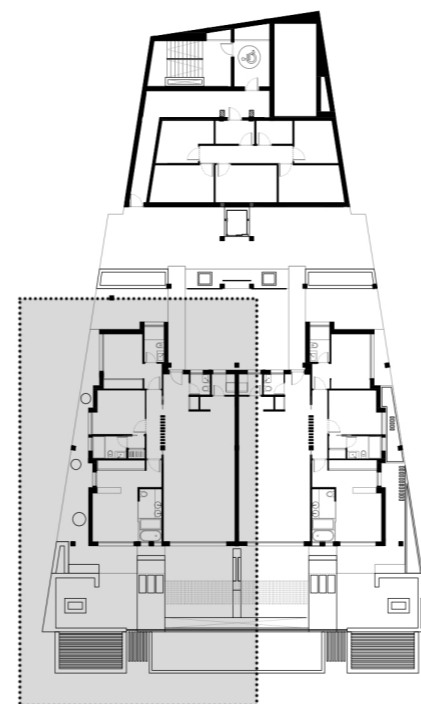


# VILLA NATURA

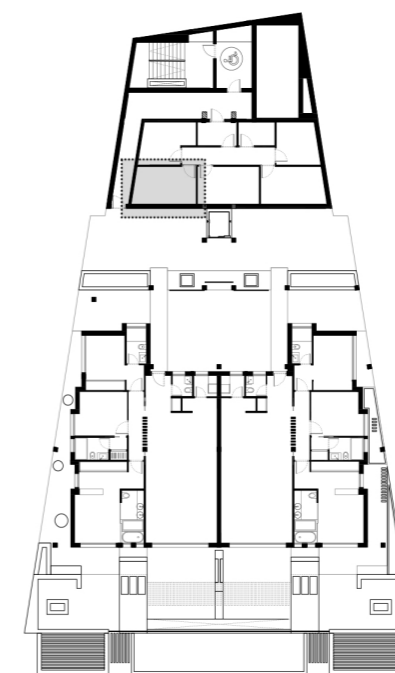
FLOOR -1 WEST



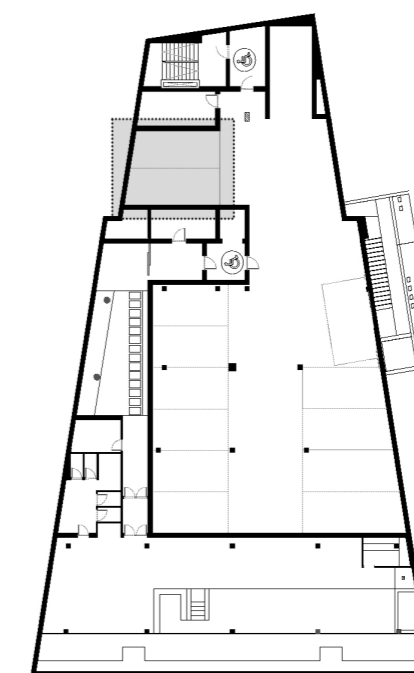
Drawings may differ from final results due to technical adjustments during Project Execution. Furnishing recreation made for decoration purposes.



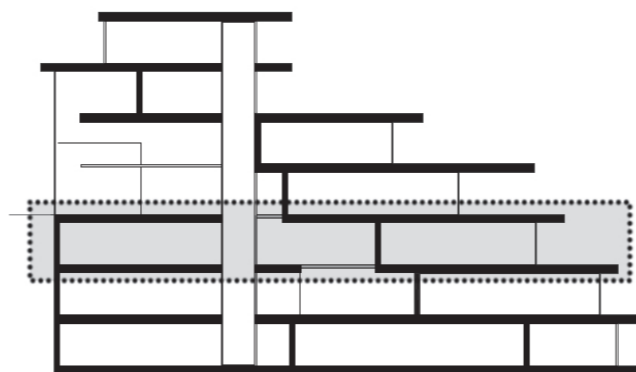
VILLA NATURA  
floor -1



STORAGE ROOM  
floor -1



GARAGE  
floor -3



## VILLA NATURA

Floor -1, west

Interior: 137,15 m<sup>2</sup>  
Terrace: 94,95 m<sup>2</sup>

**TOTAL BUILT SURFACE: 232,10 m<sup>2</sup>**

\* Usable Surface according to Real Decreto 218/2005: 166,51 m<sup>2</sup>

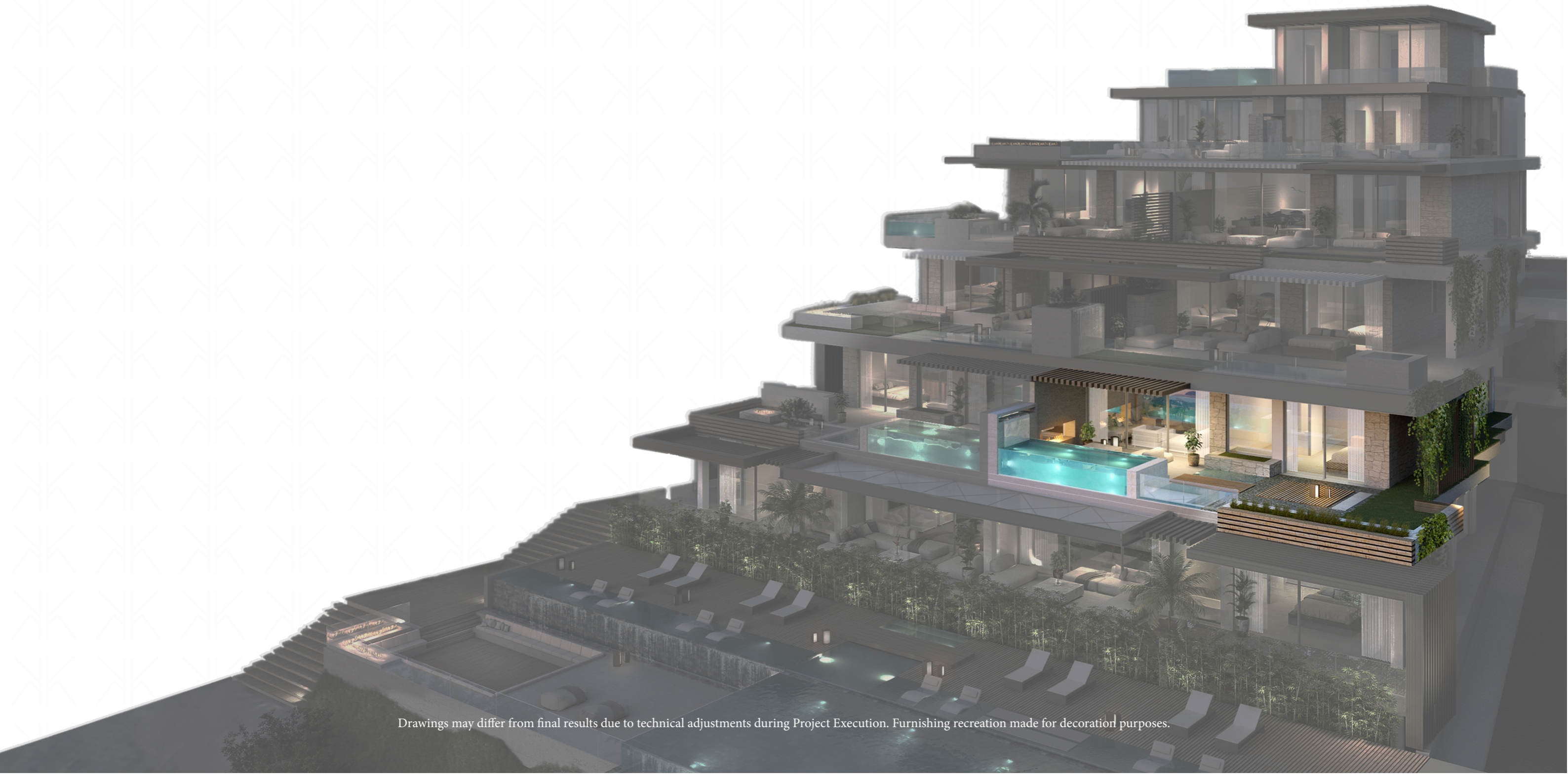
Storage room: 11,13m<sup>2</sup>  
Garage 1: 16,32 m<sup>2</sup>  
Garage 2: 15,29 m<sup>2</sup>

\*This apartment comes with two garage parking spaces.

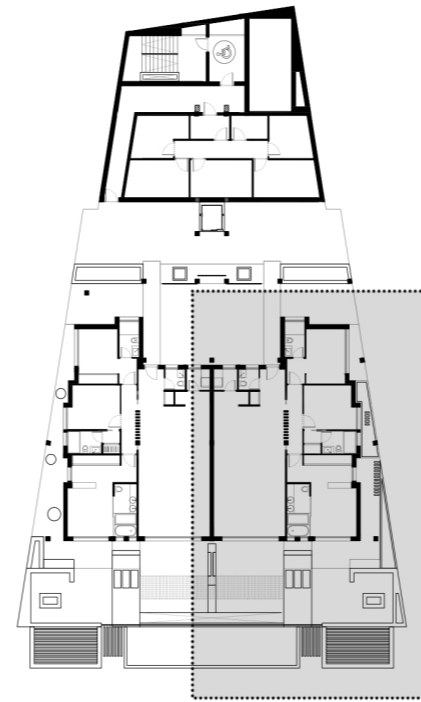
Mediterranean Sea

# VILLA PETRA

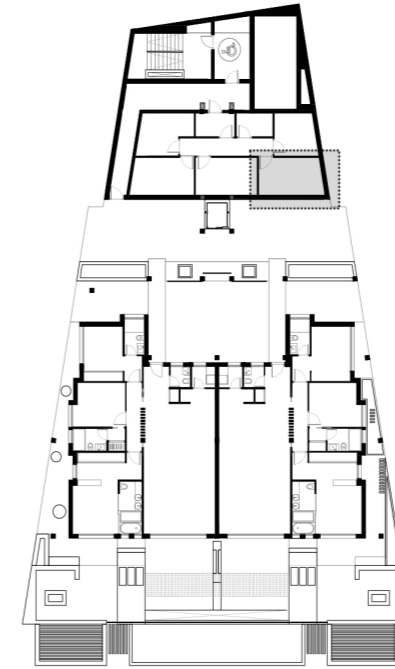
FLOOR -1 EAST



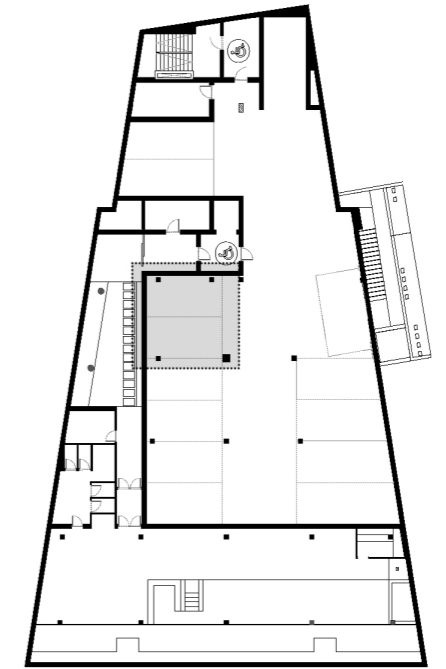
Drawings may differ from final results due to technical adjustments during Project Execution. Furnishing recreation made for decoration purposes.



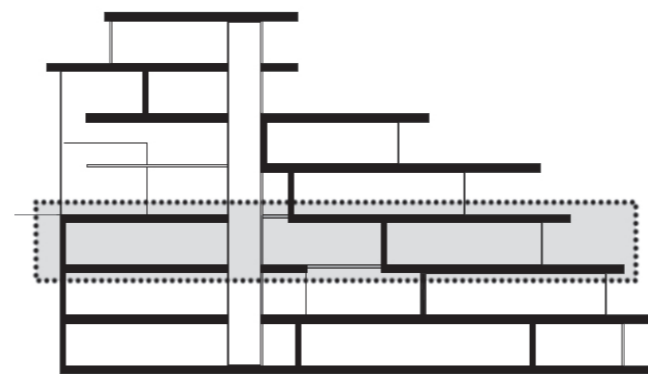
VILLA PETRA  
floor -1



STORAGE ROOM  
floor -1



GARAGE  
floor -3



Mediterranean Sea

## VILLA PETRA

Floor -1, east

Interior: 137,15 m<sup>2</sup>  
Terrace: 94,96 m<sup>2</sup>

**TOTAL BUILT SURFACE: 232,11 m<sup>2</sup>**

\* Usable Surface according to Real Decreto 218/2005: 166,51 m<sup>2</sup>

Storage room: 11,12 m<sup>2</sup>

Garage 1: 15,36 m<sup>2</sup>

Garage 2: 15,22 m<sup>2</sup>

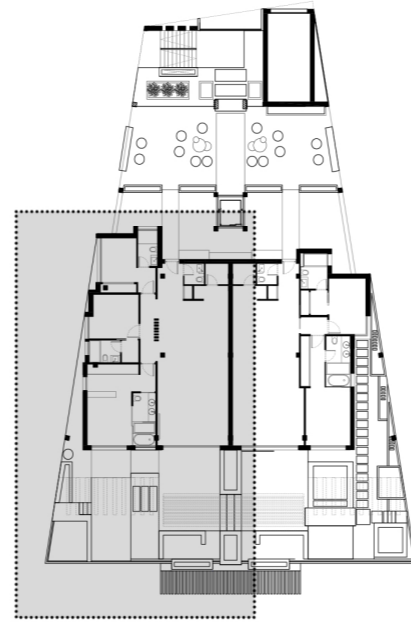
\*This apartment comes with two garage parking spaces.

# VILLA CINERE

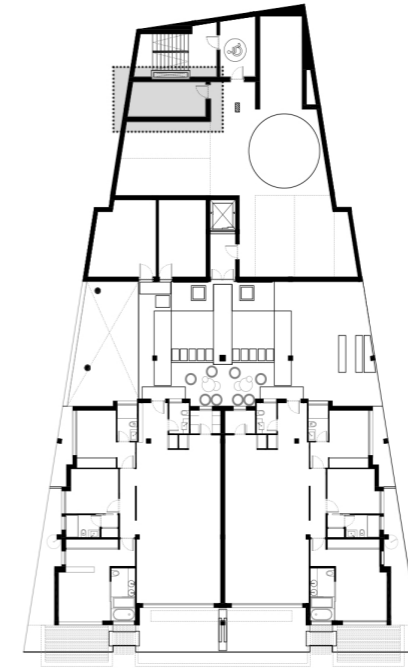
FLOOR 0 WEST



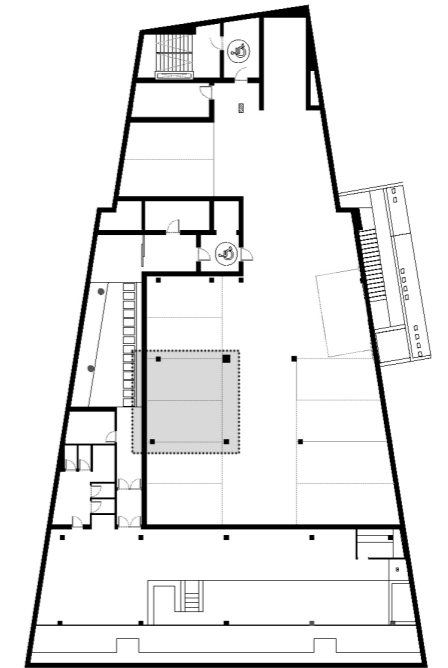
Drawings may differ from final results due to technical adjustments during Project Execution. Furnishing recreation made for decoration purposes.



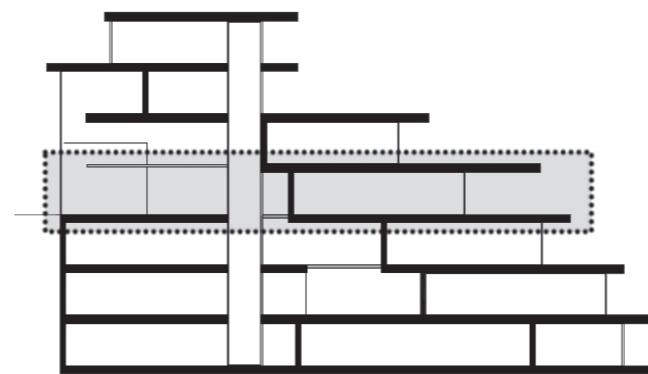
VILLA CINERE  
floor 0



STORAGE ROOM  
floor -1



GARAGE  
floor -3



### VILLA CINERE

Floor 0, west

Interior: 140,14 m<sup>2</sup>  
Terrace: 101,53 m<sup>2</sup>

**TOTAL BUILT SURFACE: 241,67 m<sup>2</sup>**

\* Usable Surface according to Real Decreto 218/2005: 173,22 m<sup>2</sup>

Storage room: 12,84 m<sup>2</sup>  
Garage 1: 15,35 m<sup>2</sup>

Garage 2: 15,36 m<sup>2</sup>

\*This apartment comes with two garage parking spaces.

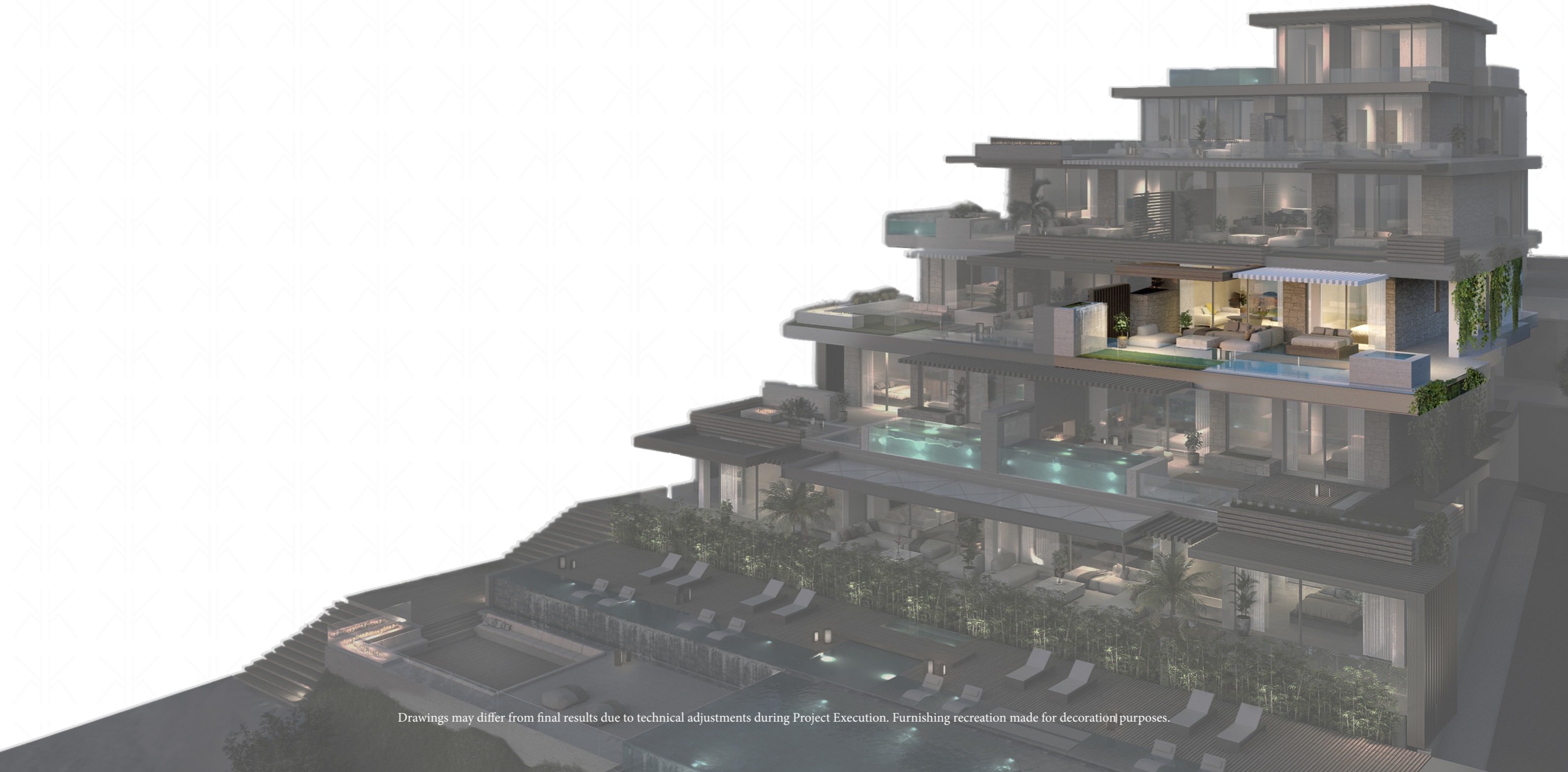
Mediterranean Sea



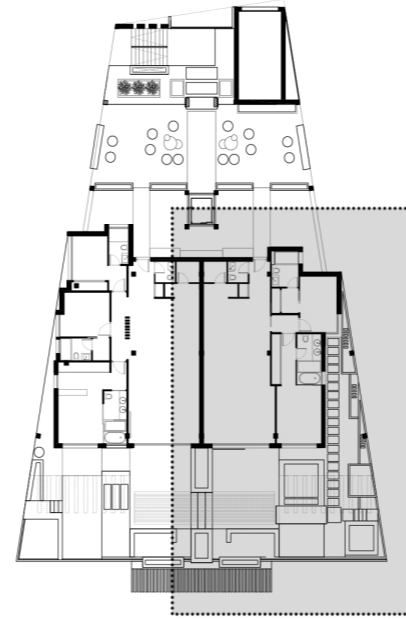
Drawings may differ from final results due to technical adjustments during Project Execution. Furnishing recreation made for decoration purposes.

# VILLA FLAMMA

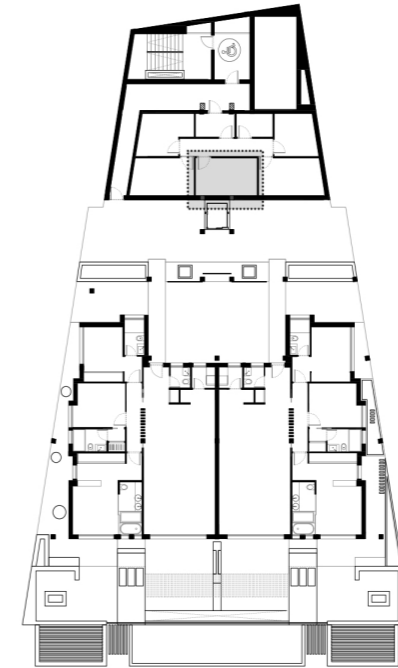
FLOOR 0 EAST



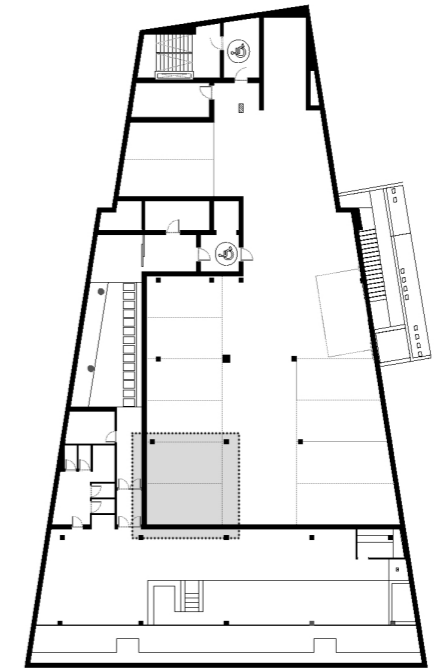
Drawings may differ from final results due to technical adjustments during Project Execution. Furnishing recreation made for decoration purposes.



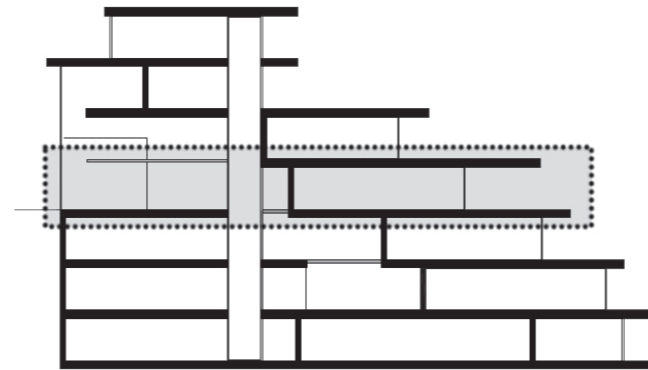
VILLA FLAMMA  
floor 0



STORAGE ROOM  
floor -1



GARAGE  
floor -3



**VILLA FLAMMA**  
Floor 0, east

Interior: 117,92 m<sup>2</sup>  
Terrace: 115,16 m<sup>2</sup>

**TOTAL BUILT SURFACE: 233,08 m<sup>2</sup>**

\* Usable Surface according to Real Decreto 218/2005: 160,06 m<sup>2</sup>

Storage room: 11,10 m<sup>2</sup>  
Garage 1: 15,40 m<sup>2</sup>  
Garage 2: 15,36 m<sup>2</sup>

\*This apartment come with two garage parking spaces.

Mediterranean Sea

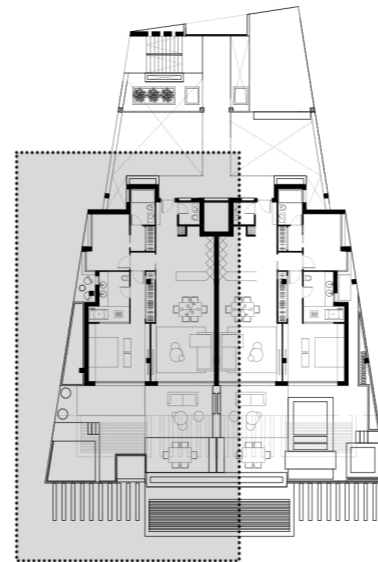


# VILLA BRISA

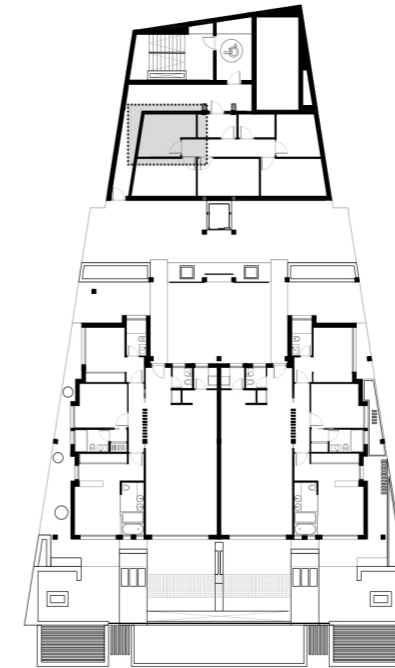
FLOOR +1 WEST



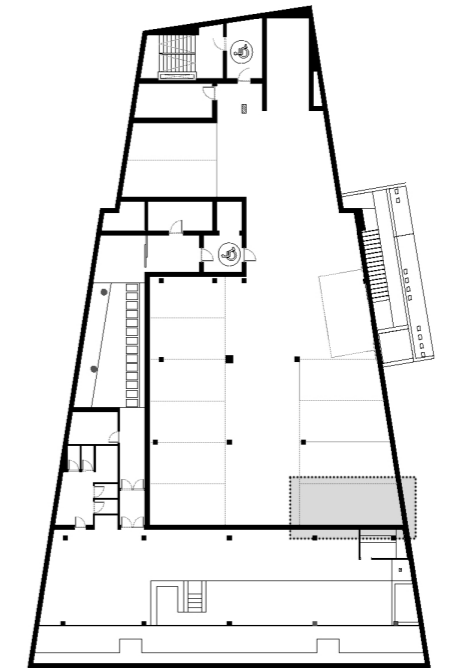
Drawings may differ from final results due to technical adjustments during Project Execution. Furnishing recreation made for decoration purposes.



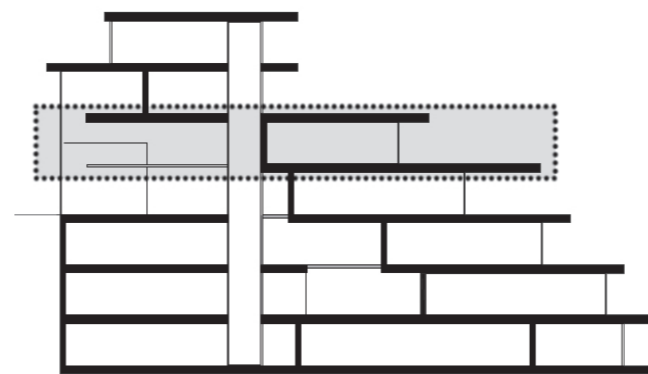
VILLA BRISA  
floor +1



STORAGE ROOM  
floor -1



GARAGE  
floor -3



## VILLA BRISA

Floor +1, west

Interior: 114,57 m<sup>2</sup>  
Terrace: 85,98 m<sup>2</sup>

**TOTAL BUILT SURFACE: 200,55 m<sup>2</sup>**

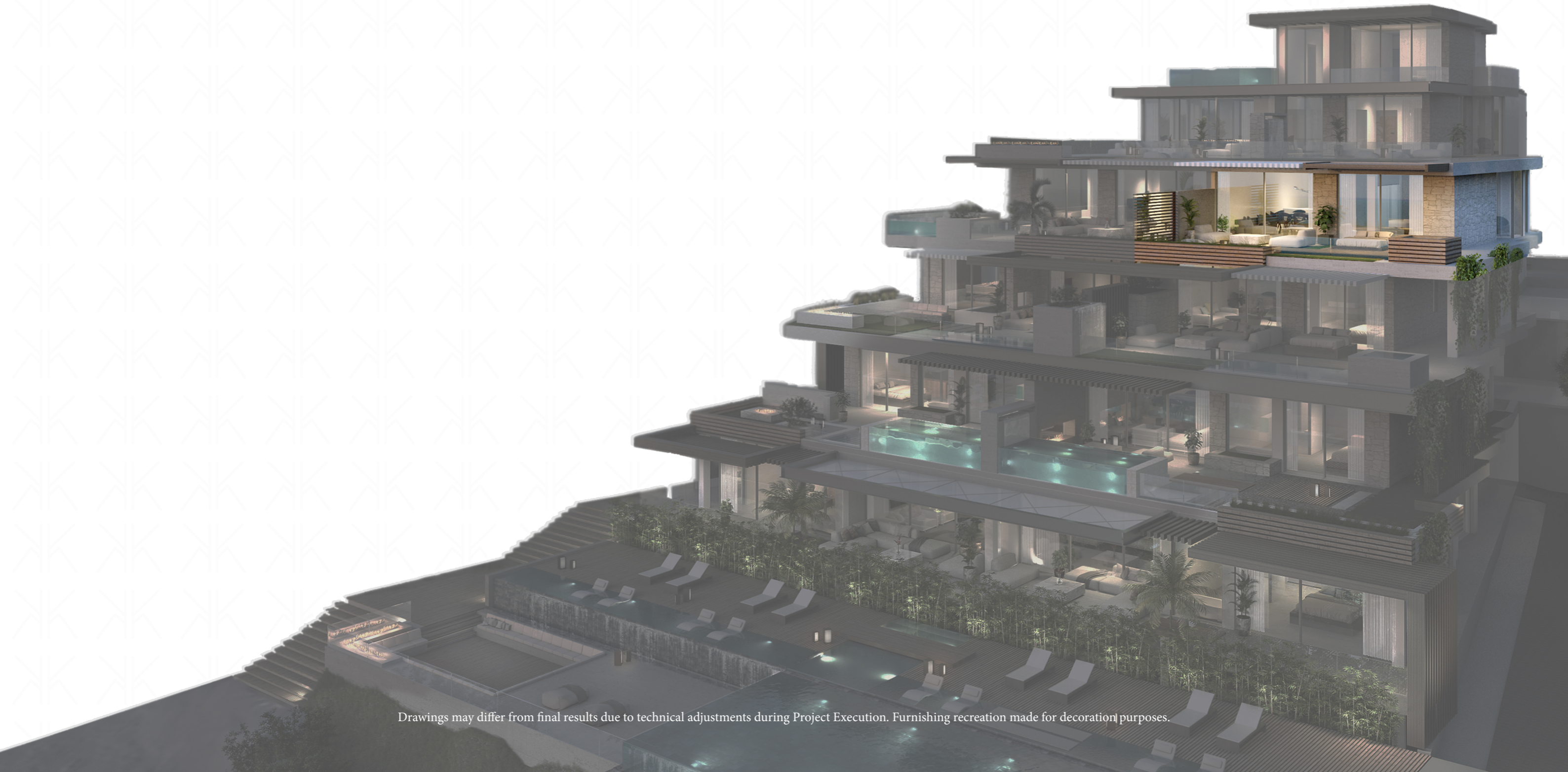
\* Usable Surface according to Real Decreto 218/2005: 142,09 m<sup>2</sup>

Storage room: 9,71 m<sup>2</sup>  
Garage 1: 16,05 m<sup>2</sup>

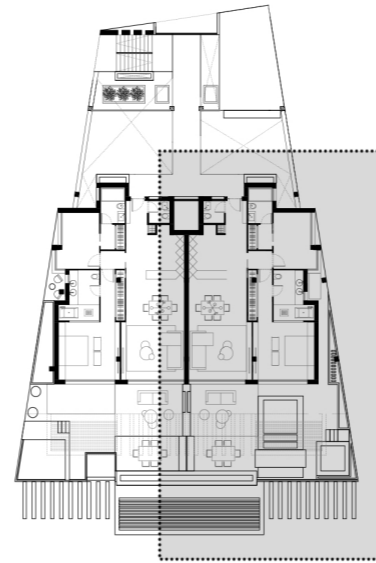
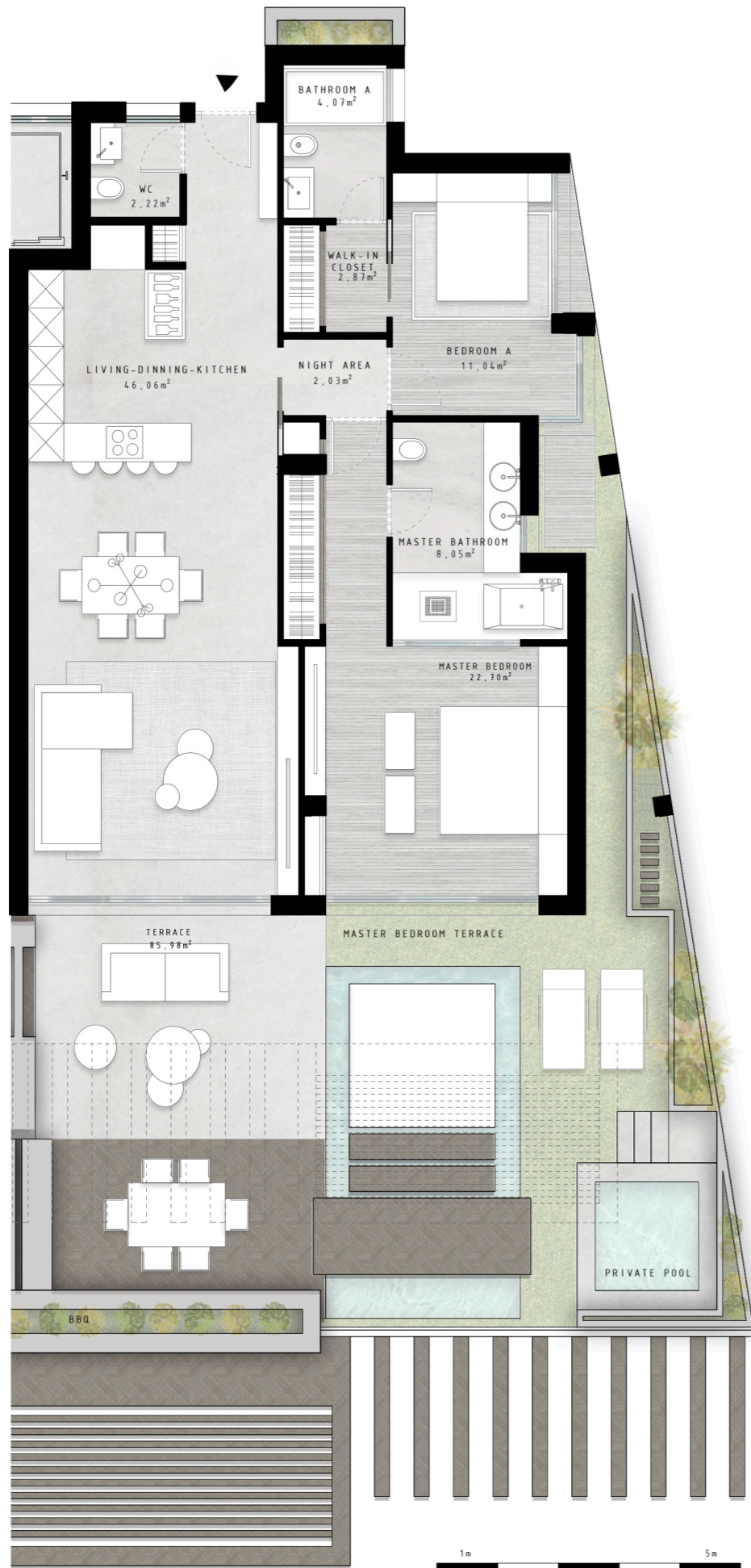
Mediterranean Sea

# VILLA VENTU

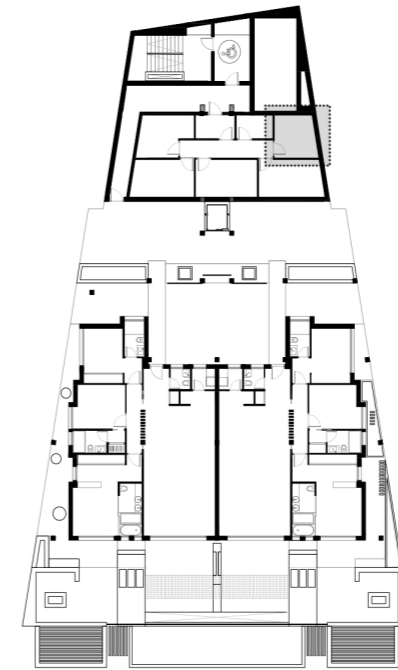
FLOOR +1 EAST



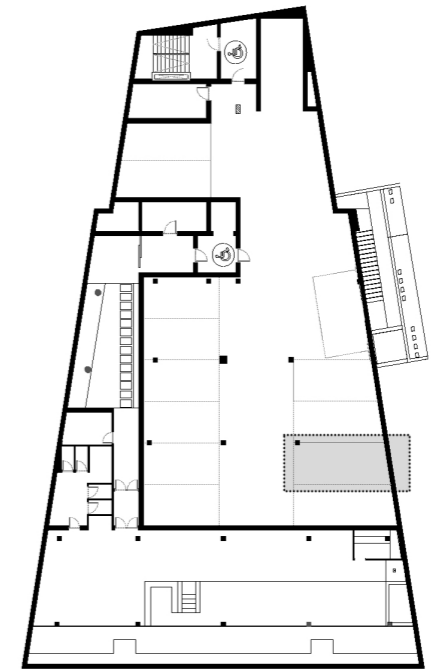
Drawings may differ from final results due to technical adjustments during Project Execution. Furnishing recreation made for decoration purposes.



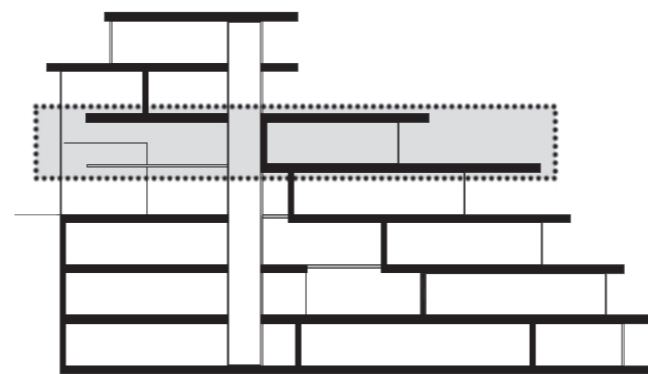
VILLA VENTU  
floor +1



STORAGE ROOM  
floor -1



GARAGE  
floor -3



**VILLA VENTU**

Floor +1, east

Interior: 114,57 m<sup>2</sup>  
Terrace: 85,98 m<sup>2</sup>

**TOTAL BUILT SURFACE: 200,55 m<sup>2</sup>**

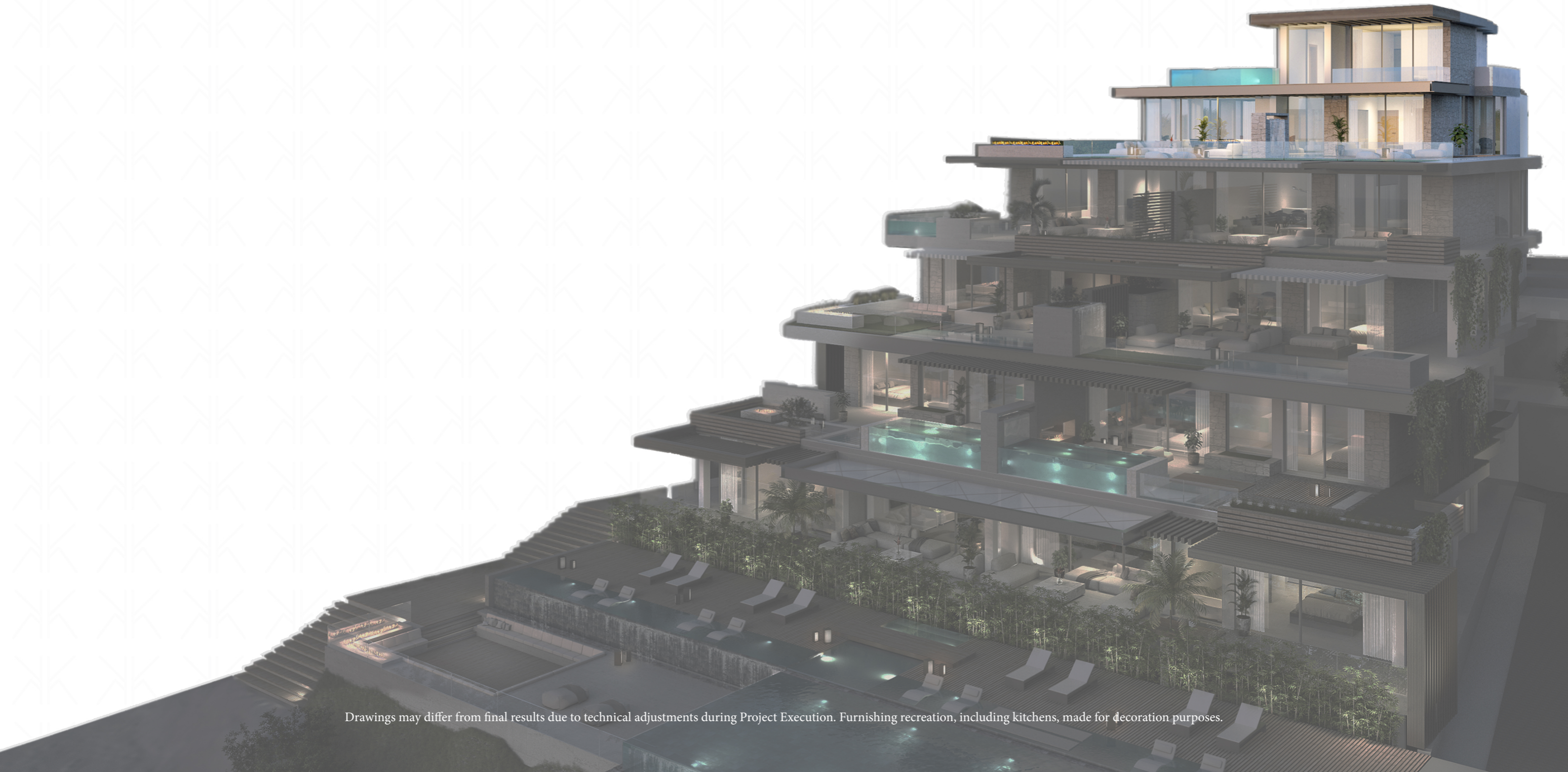
\* Usable Surface according to Real Decreto 218/2005: 142,04 m<sup>2</sup>

Storage room: 8,02 m<sup>2</sup>  
Garage: 16,05 m<sup>2</sup>

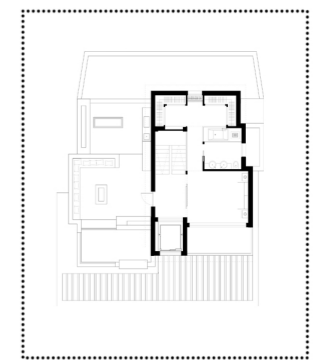
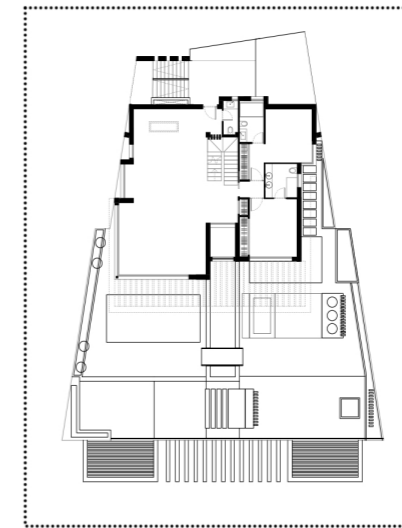
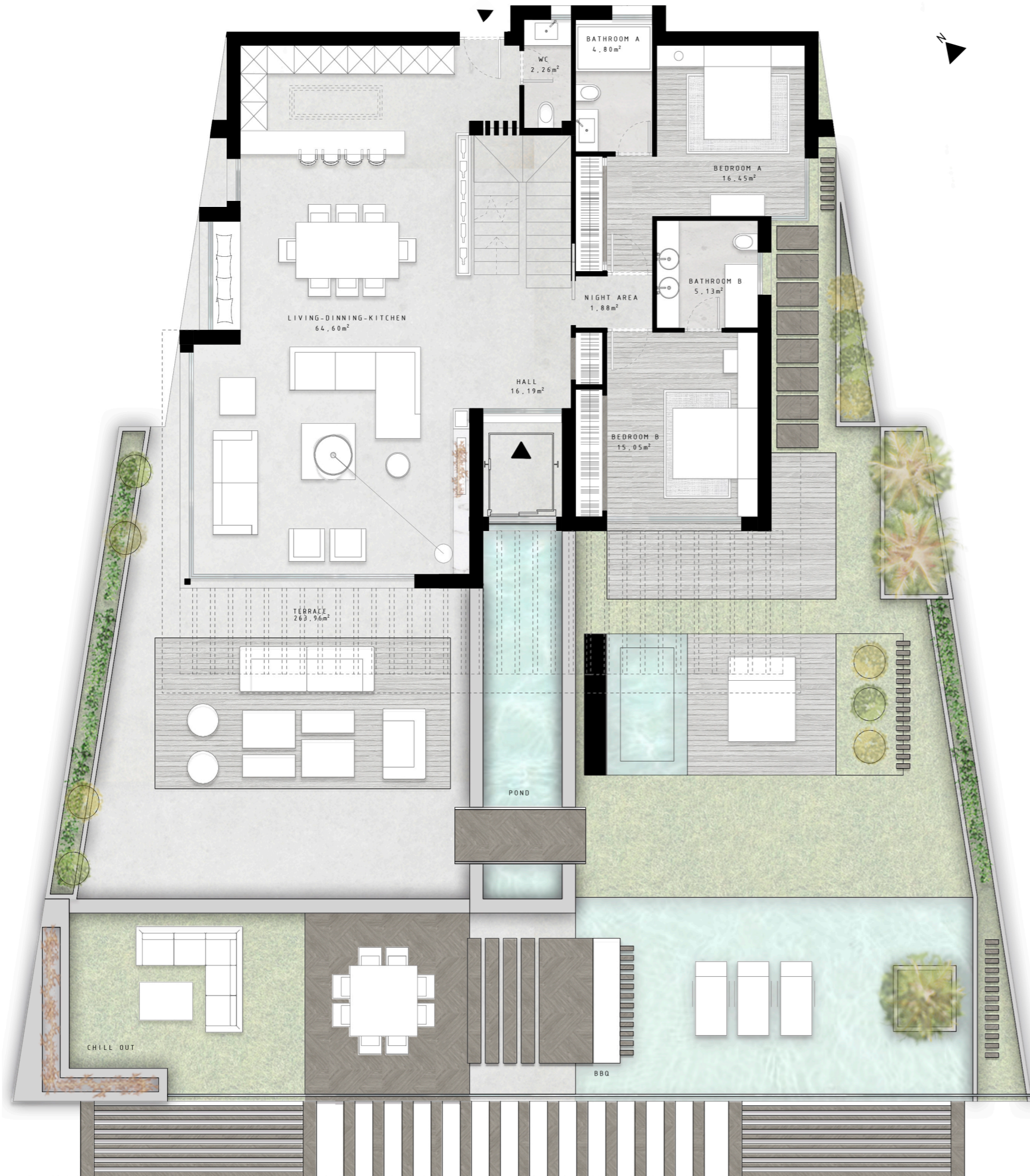
Mediterranean Sea

# VILLA STELLA

PENTHOUSE, level 1



Drawings may differ from final results due to technical adjustments during Project Execution. Furnishing recreation, including kitchens, made for decoration purposes.



VILLA STELLA  
floor +2

**PENTHOUSE, LEVEL 1**

Interior: 145,83 m<sup>2</sup>  
Terrace: 263,96 m<sup>2</sup>

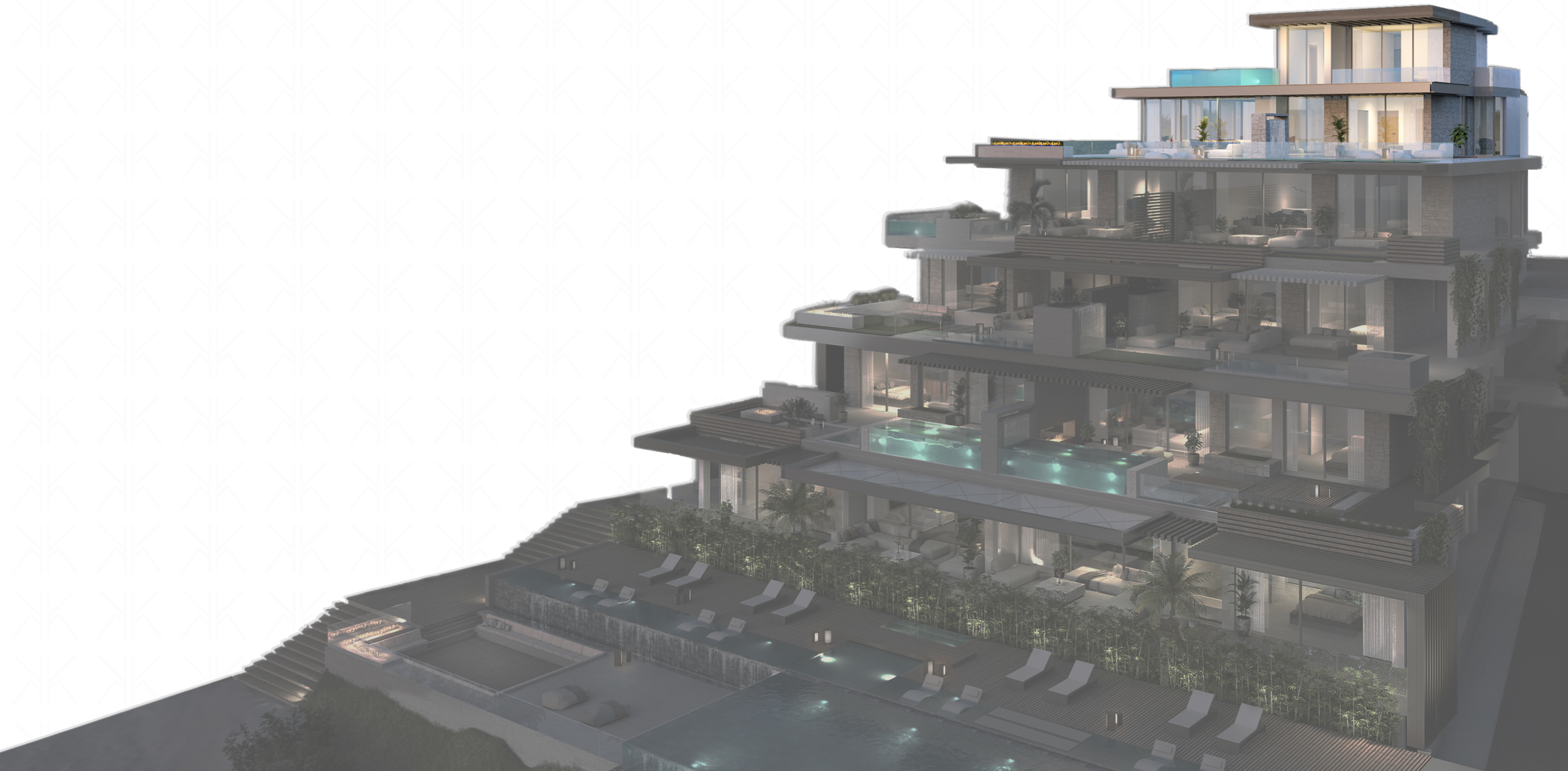
**TOTAL BUILT SURFACE LEVEL 1: 409,79 m<sup>2</sup>**



Drawings may differ from final results due to technical adjustments during Project Execution. Furnishing recreation made for decoration purposes.

# VILLA STELLA

PENTHOUSE, level 2

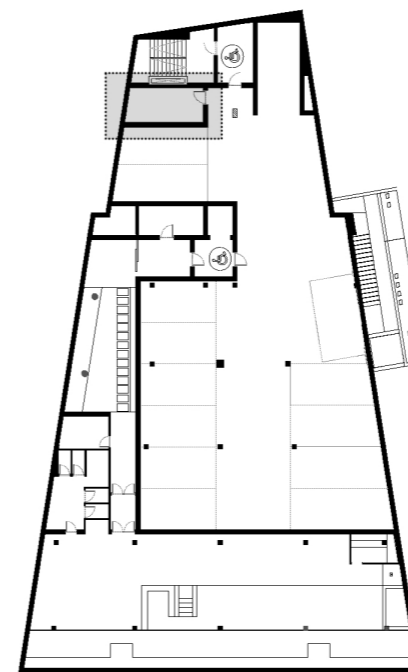




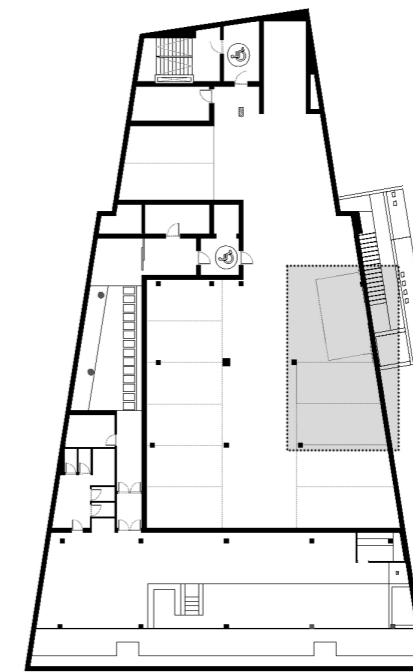
**PENTHOUSE, LEVEL 2**

Interior: 57,47 m<sup>2</sup>  
Terrace: 80,17 m<sup>2</sup>

**TOTAL BUILT SURFACE LEVEL 2: 137,64 m<sup>2</sup>**



**STORAGE ROOM**  
floor -3



**GARAGE**  
floor -3

**VILLA STELLA**

Penthouse

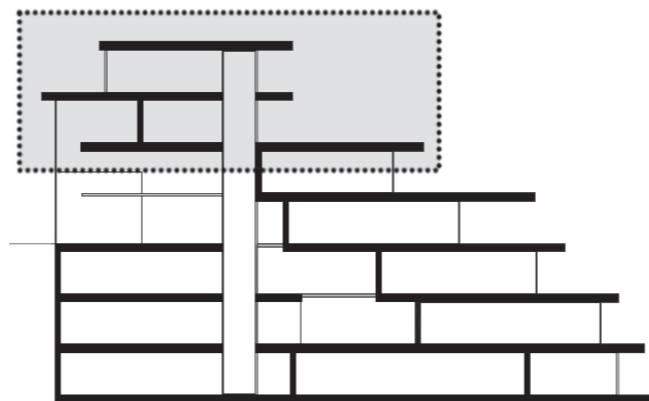
Interior: 203,30 m<sup>2</sup>  
Terrace: 344,13 m<sup>2</sup>

**TOTAL BUILT SURFACE: 547,43 m<sup>2</sup>**

\* Usable Surface according to Real Decreto 218/2005: 349,25 m<sup>2</sup>

Storage room: 12,84 m<sup>2</sup>  
Garage 1: 32,10 m<sup>2</sup>  
Garage 2: 18,63 m<sup>2</sup>

\*This apartment come with three garage parking spaces.



Mediterranean Sea



