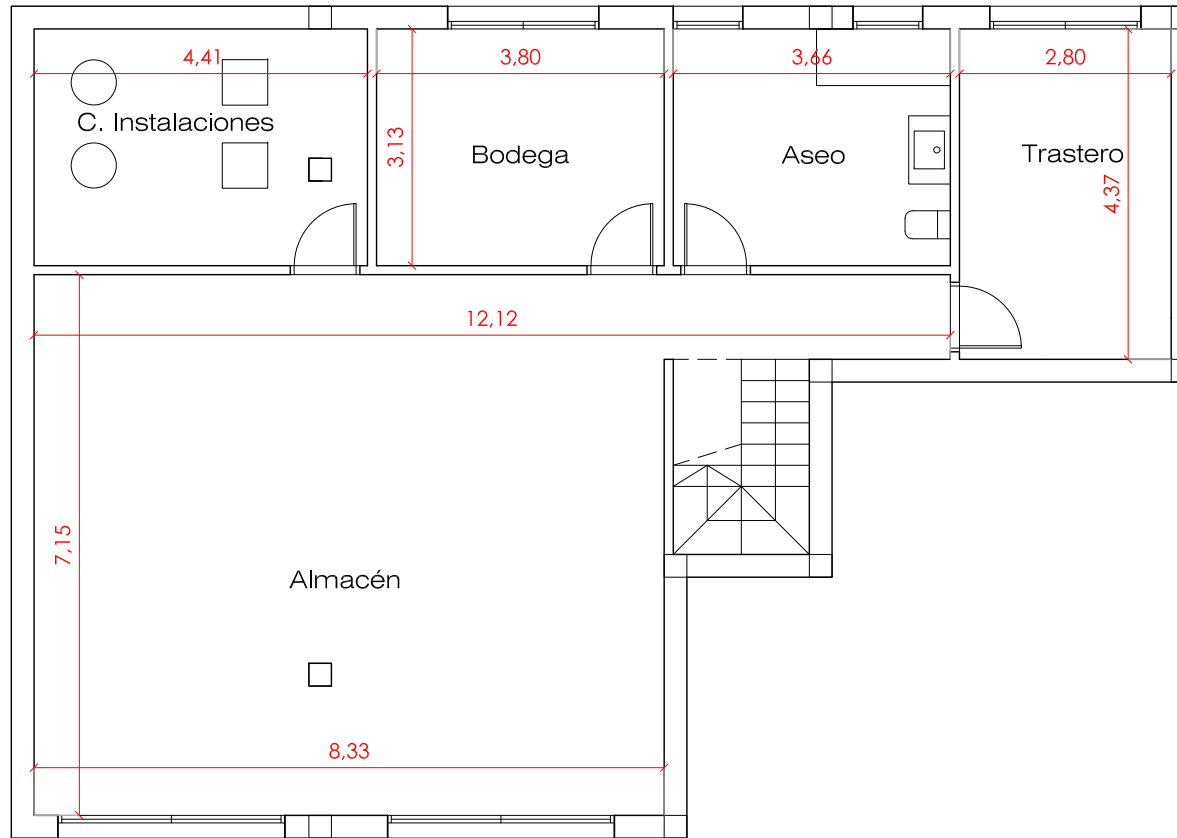


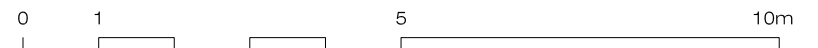
PLANTA SÓTANO

ESTADO FINAL DE OBRA

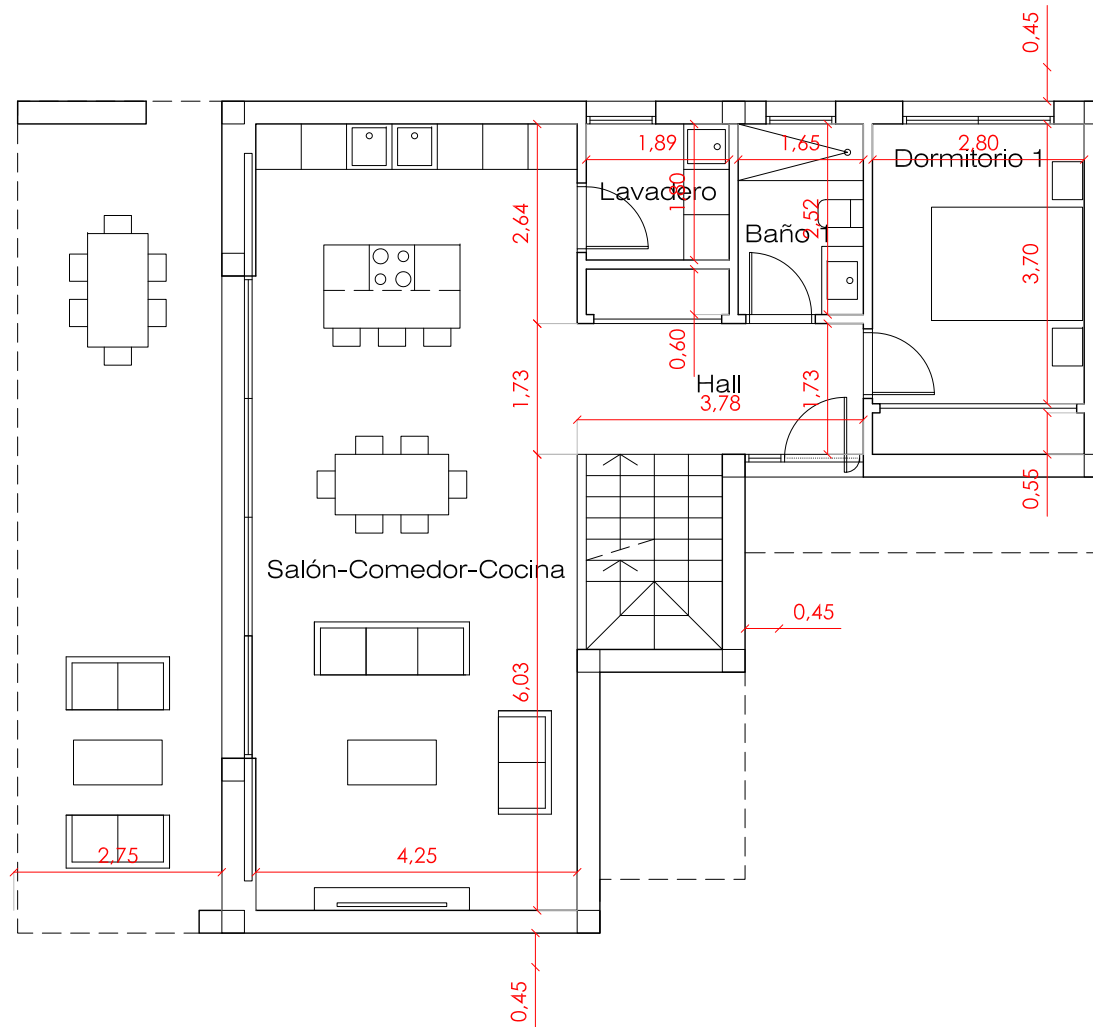


basement built surface: 136,53 m²

PRINT A-4, E 1:100

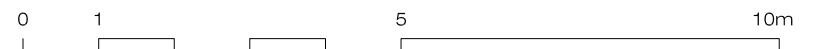


PLANTA BAJA

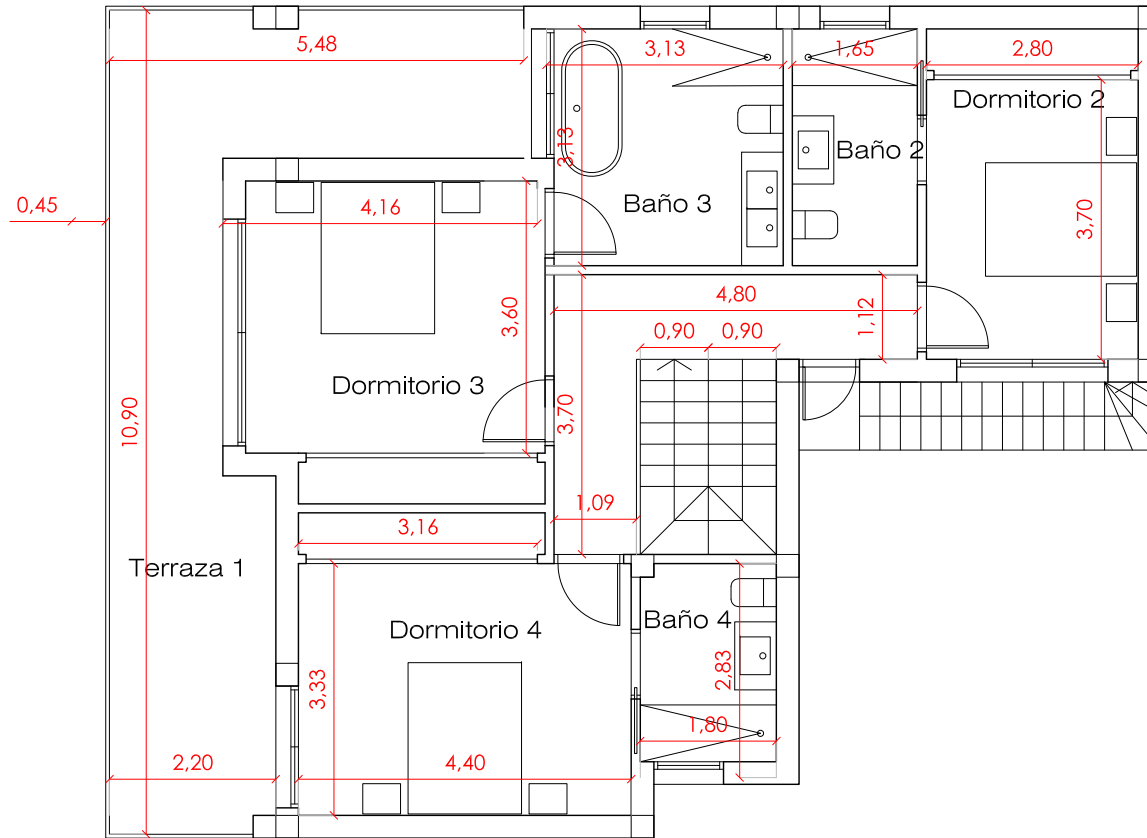


ground floor built surface: 93,27 m²

PRINT A-4, E 1:100

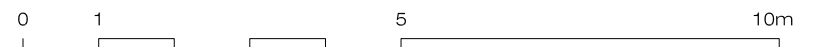


PLANTA ALTA



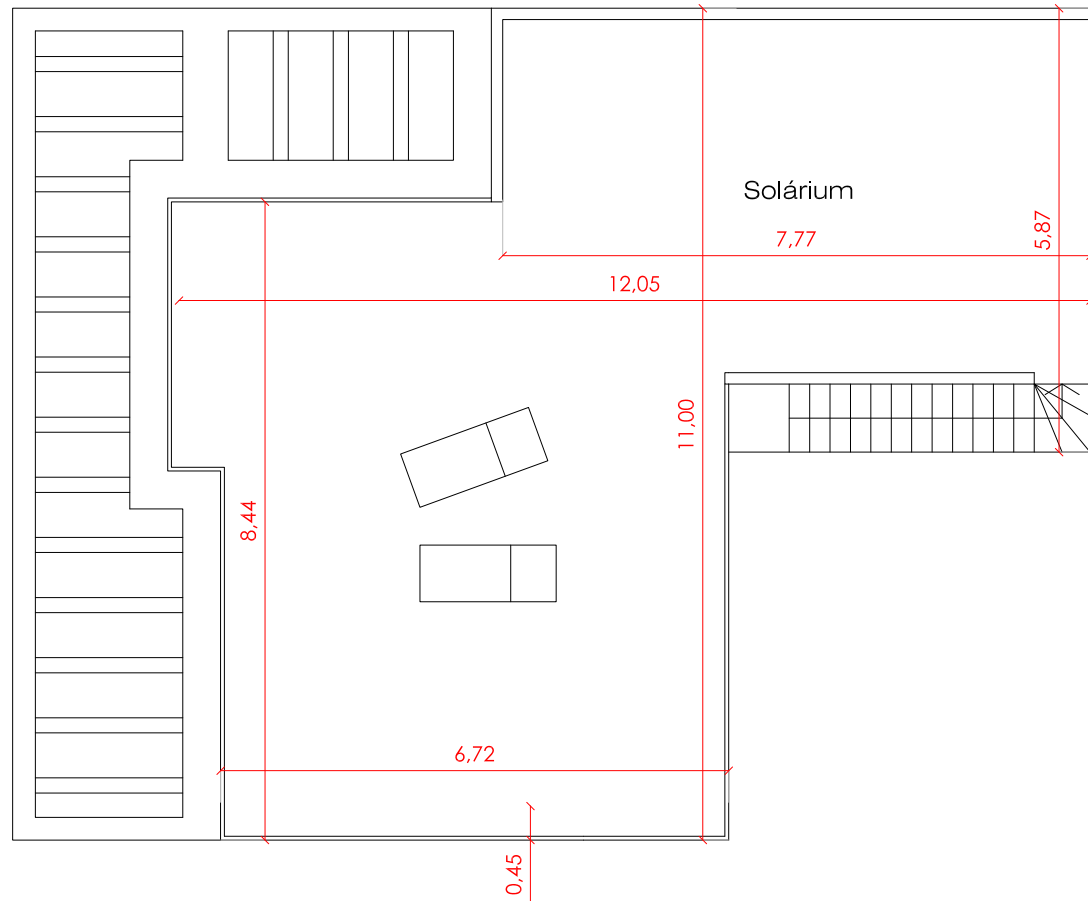
first floor built surface: 94,85 m²

PRINT A-4, E 1:100



PLANTA SOLARIUM

PLANTA SOLARIUM



solarium surface: 88,00 m²

PRINT A-4, E 1:100

