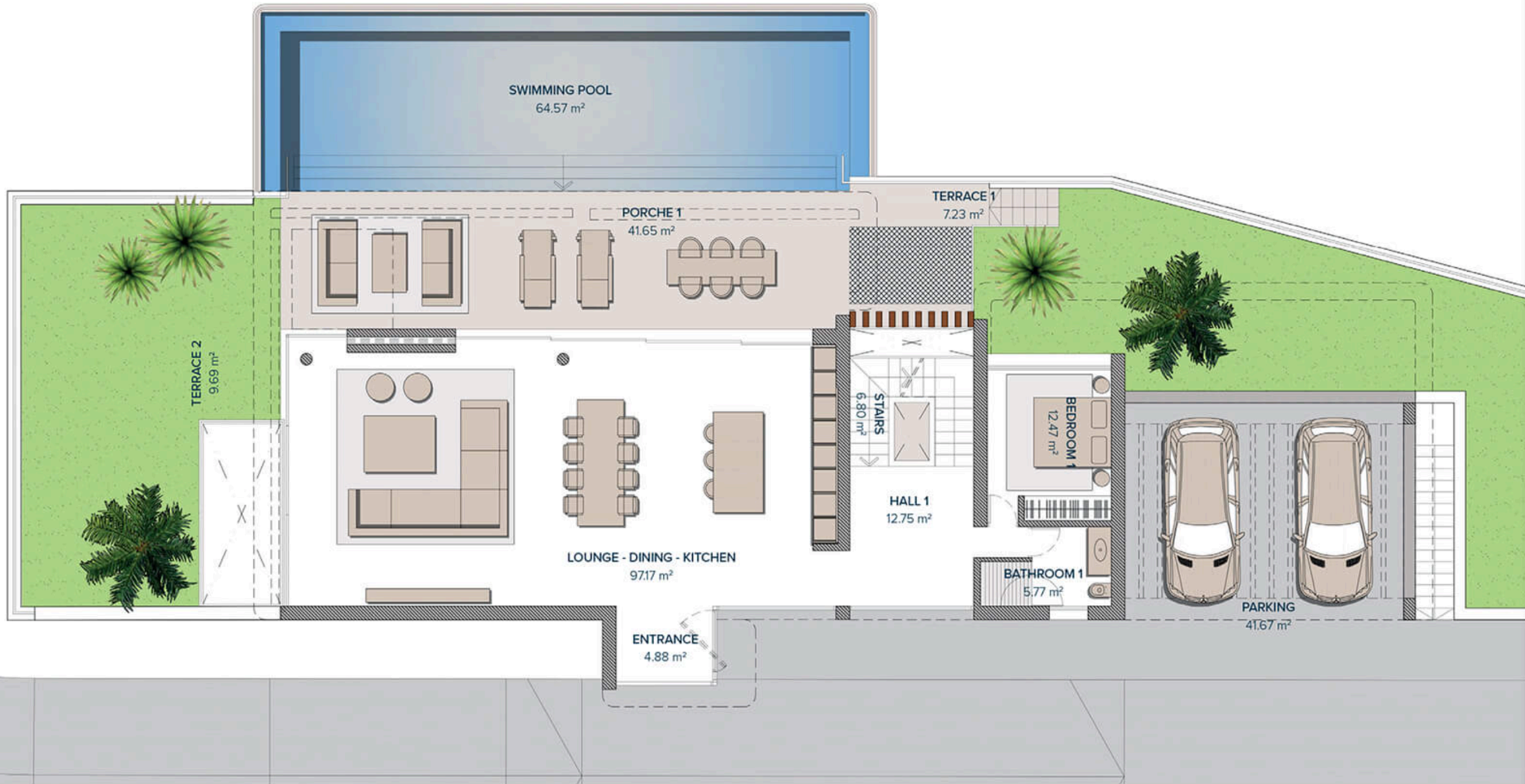


CHRISTIE'S
INTERNATIONAL REAL ESTATE
———— COSTA DEL SOL ————

Floor plans Ref CR 3079



Nº16 TOPACIO GROUND FLOOR

ENTRANCE & LIVING AREA

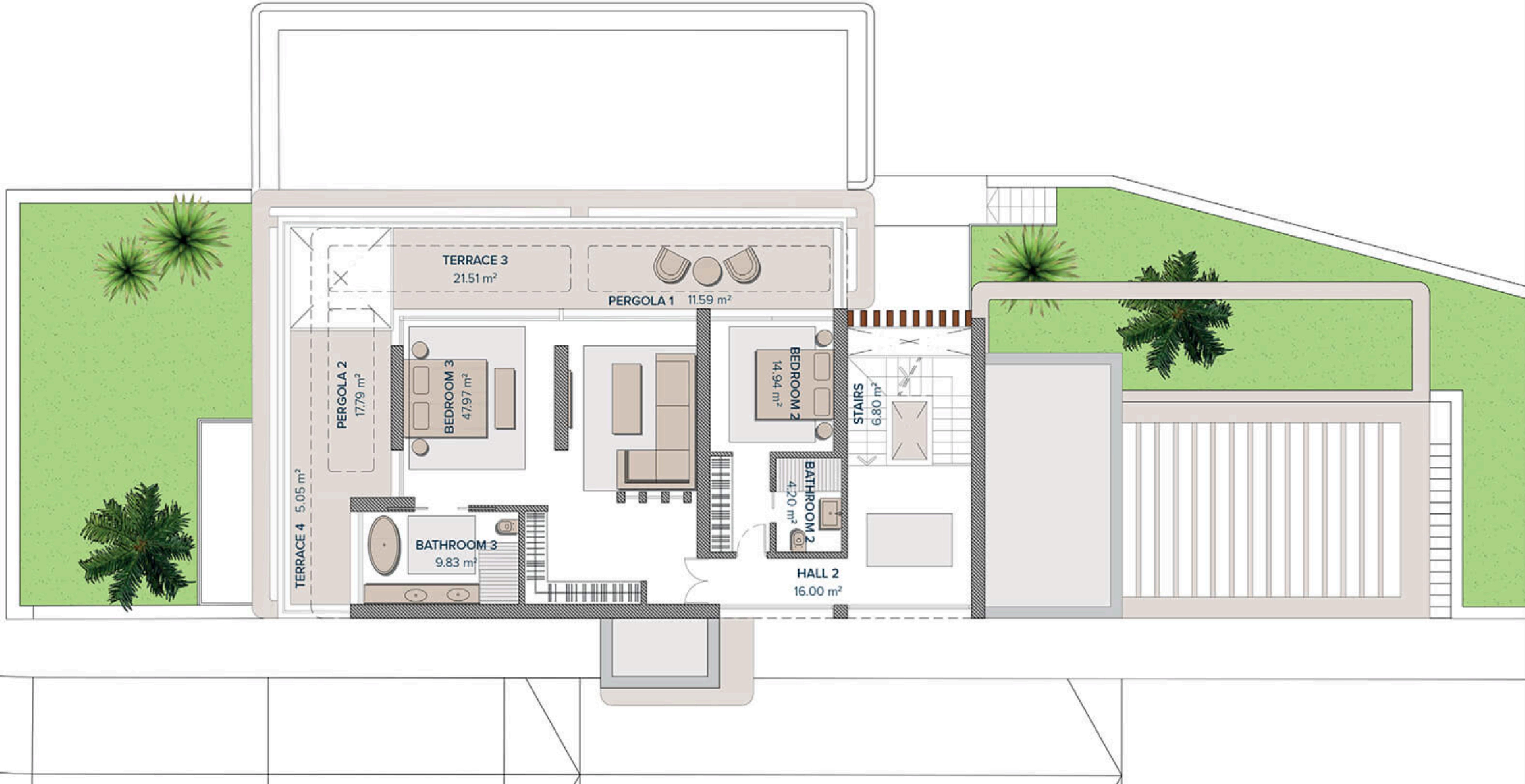
ENTRANCE	4,88 m ²
HALL 1	12,75 m ²
STAIRS	6,80 m ²
LOUNGE- DINING - KITCHEN	97,17 m ²
BATHROOM 1	5,77 m ²
BEDROOM 1	12,47 m ²
TOTAL	139,84 m²

PARKING (PERGOLA)	41,67 m ²
TOTAL	41,67 m²

PERGOLAS & TERRACES

TERRACE 1	7,23 m ²
PORCHE 1	41,65 m ²
TERRACE 2	9,69 m ²
TOTAL	58,57 m²

Entrance	1
	0
	-1



Nº16 TOPACIO

FIRST FLOOR

BEDROOMS

HALL 2	16,00 m ²
STAIRS	6,80 m ²
BATHROOM 2	4,20 m ²
BEDROOM 2	14,94 m ²
BATHROOM 3	9,83 m ²
BEDROOM 3	47,97 m ²
TOTAL	99,74 m²

PERGOLAS & TERRACES

TERRACE 3	21,51 m ²
PERGOLA 1	11,59 m ²
PERGOLA 2	17,79 m ²
TERRACE 4	5,05 m ²
TOTAL	55,94 m²

Entrance

1
0
-1



Nº16 TOPACIO

BASEMENT

HALL 3	35,26 m ²
STAIRS	7,71 m ²
AREA 1	21,07 m ²
AREA 2	4,26 m ²
AREA 3	22,15 m ²
AREA 4	4,25 m ²
AREA 5	56,59 m ²
LAUNDRY ROOM	18,20 m ²
POOL MACHINE ROOM	18,24 m ²
MACHINERY ROOM	18,27 m ²
PATIO	1,80 m ²
TOTAL	207,80 m²

Entrance	1
	0
	-1

CHRISTIE'S
INTERNATIONAL REAL ESTATE
———— COSTA DEL SOL ————

Where *Luxury* lives

Velázquez, 1, 29602 Marbella, España
+34 951 122 313 | marbella@cire-costadelsol.com

Paseo de Reding, 25, 29016 Málaga, España
+34 951 122 312 | malaga@cire-costadelsol.com