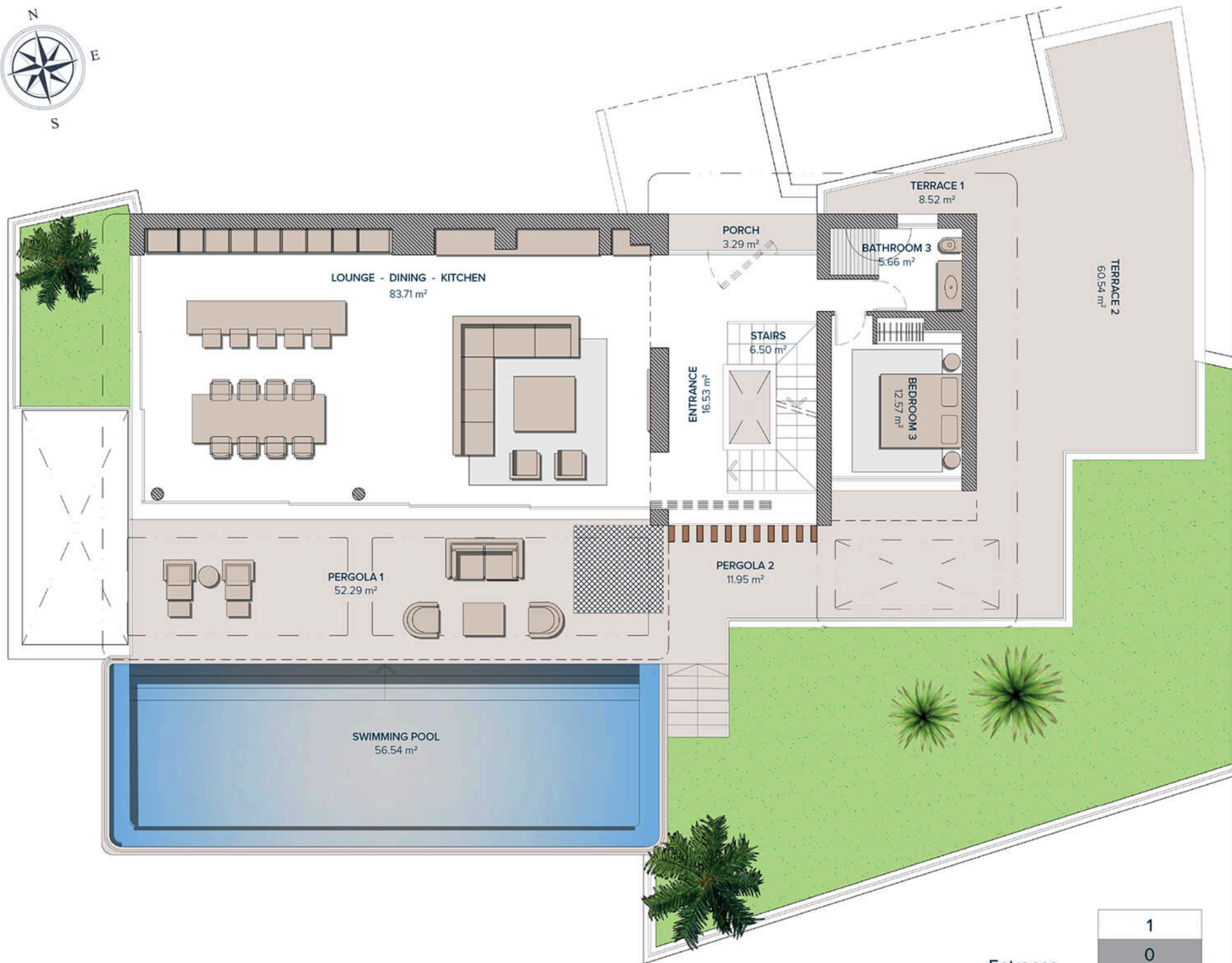


CHRISTIE'S
INTERNATIONAL REAL ESTATE
———— COSTA DEL SOL ————

Floor plans Ref CR 3078



Nº10 ESPINELA GROUND FLOOR

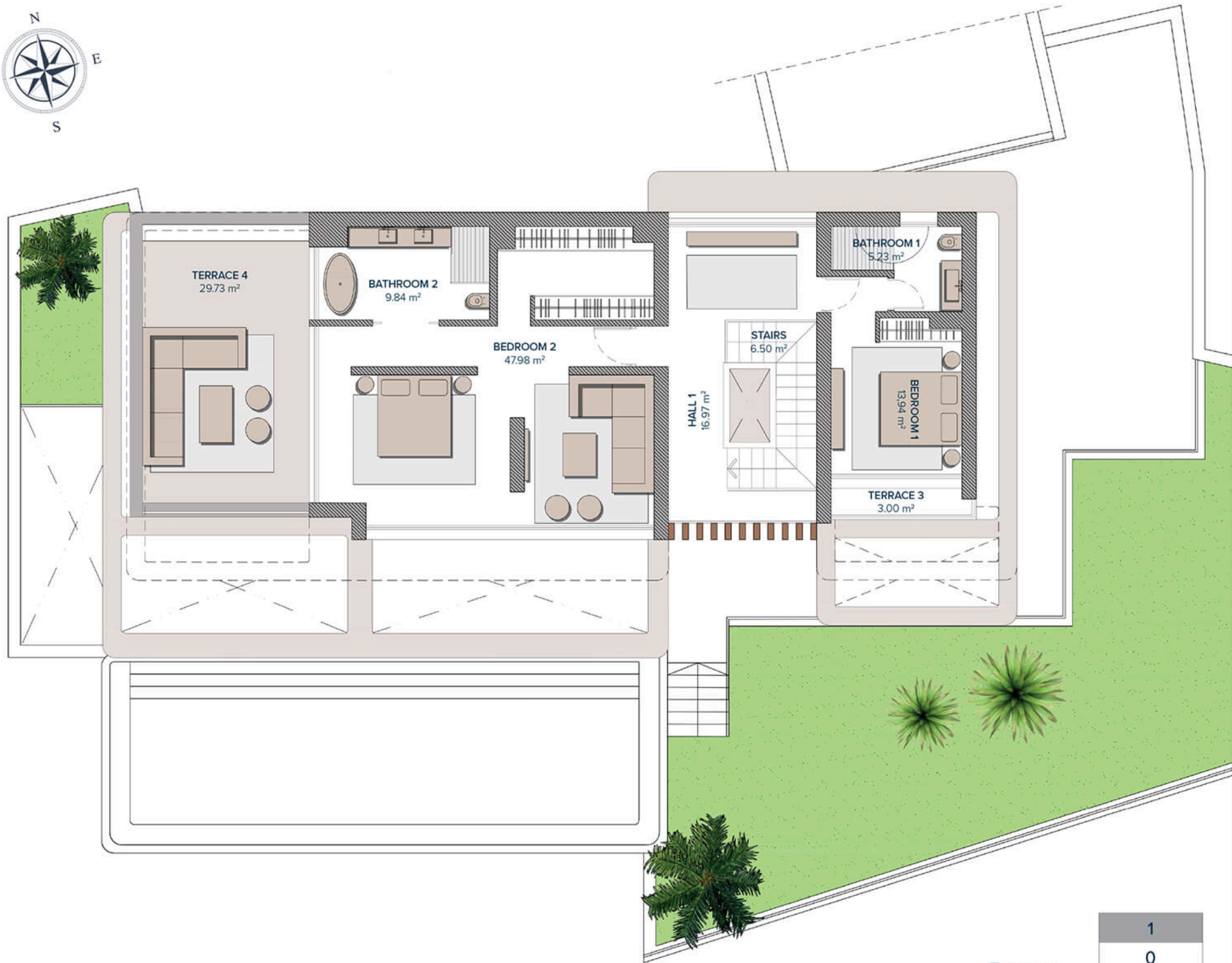
ENTRANCE & LIVING AREA

ENTRANCE	16,53 m ²
STAIRS	6,50 m ²
LOUNGE-DINING-KITCHEN	83,71 m ²
BATHROOM 3	5,66 m ²
BEDROOM 3	12,57 m ²
TOTAL	124.97 m²

PORCHE ENTRANCE	3,29 m ²
TERRACE 1	8,52 m ²
TERRACE 2	60,54 m ²
PERGOLA 1	52,29 m ²
PERGOLA 2	11,95 m ²
TOTAL	136,59 m²

1
0
-1

Entrance



Nº10 ESPINELA FIRST FLOOR

BEDROOMS

HALL 1	16,97 m ²
STAIRS	6,50 m ²
BATHROOM 1	5,23 m ²
BEDROOM 1	13,94 m ²
BATHROOM 2	9,84 m ²
BEDROOM 2	47,98 m ²
TOTAL	100,46 m²

TERRACES

TERRACE 3	3,00 m ²
TERRACE 4	29,73 m ²
TOTAL	32,73 m²

	1
Entrance	0
	-1



Nº10 ESPINELA BASEMENT

BASEMENT

HALL 2	27 m ²
STAIRS	4,24 m ²
PATIO	1,80 m ²
PATIO 1	4,73 m ²
PATIO 2	15,69 m ²
AREA 1	81,97 m ²
AREA 2	14,18 m ²
AREA 3	4,71 m ²
AREA 4	4,98 m ²
AREA 5	18,68 m ²
HALL 3	3,11 m ²
PARKING	62,36m ²
POOL MACHINE ROOM	11,24 m ²
MACHINERY ROOM	13,75 m ²
TOTAL	268,44 m²

1
0
-1

Entrance

CHRISTIE'S
INTERNATIONAL REAL ESTATE
———— COSTA DEL SOL ————

Where *Luxury* lives

Velázquez, 1, 29602 Marbella, España
+34 951 122 313 | marbella@cire-costadelsol.com

Paseo de Reding, 25, 29016 Málaga, España
+34 951 122 312 | malaga@cire-costadelsol.com