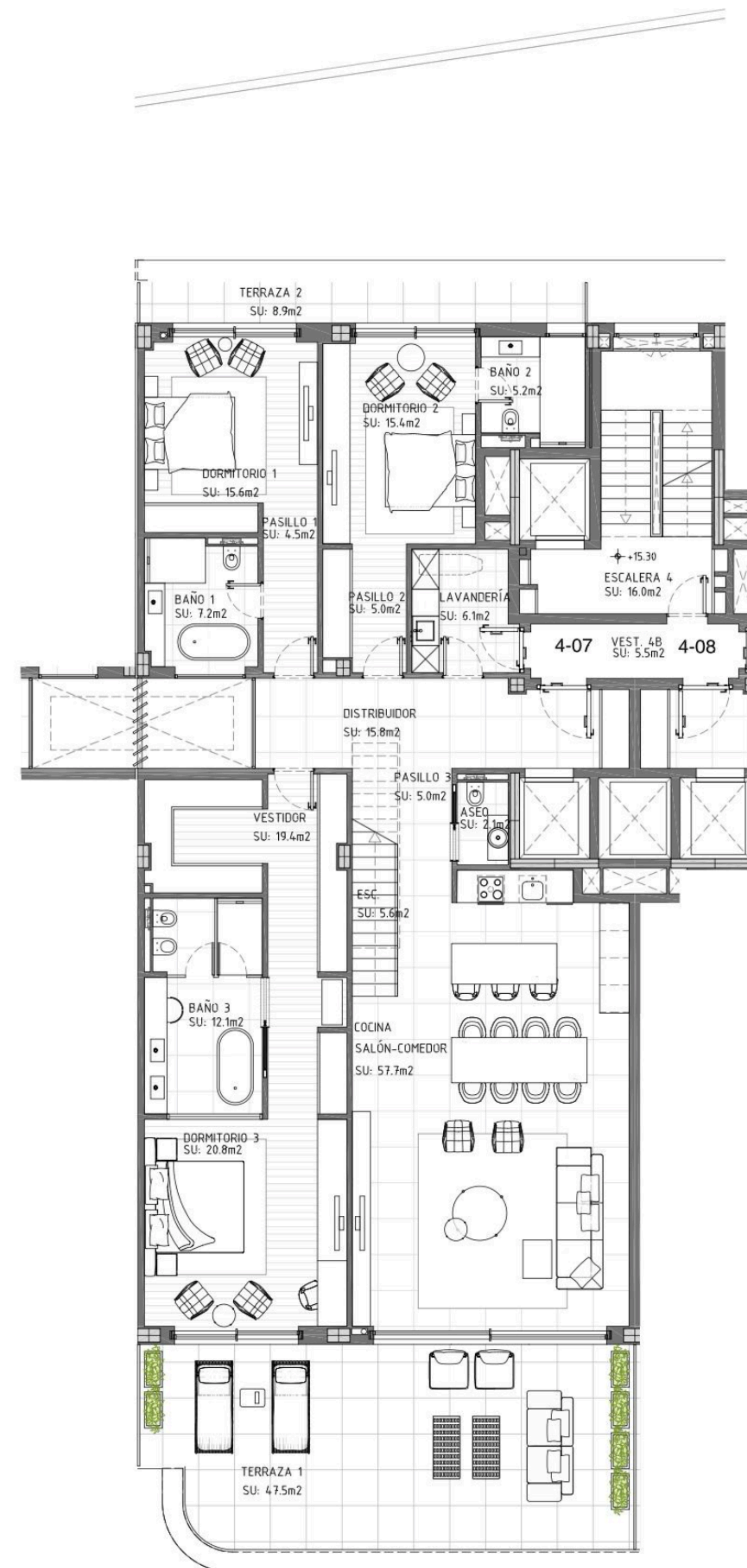


CHRISTIE'S  
INTERNATIONAL REAL ESTATE  
———— COSTA DEL SOL ————

Floor plans Ref CR 3072



## Floor 4

3 BEDROOM DATE: SEPTEMBER 2024  
 PENTHOUSE SCALE: 1/100 (A2)

PROPERTY: ARCHITECT:  
 DEI HOMES SL. MOISÉS GARCÍA GONZÁLEZ

### Usable Area

Living Room + Kitchen	57,70m <sup>2</sup>
Master Bedroom	52,30m <sup>2</sup>
Bedroom 1	27,30m <sup>2</sup>
Bedroom 2	25,60m <sup>2</sup>
Terrace 1	47,50m <sup>2</sup>
Terrace 2	8,90m <sup>2</sup>

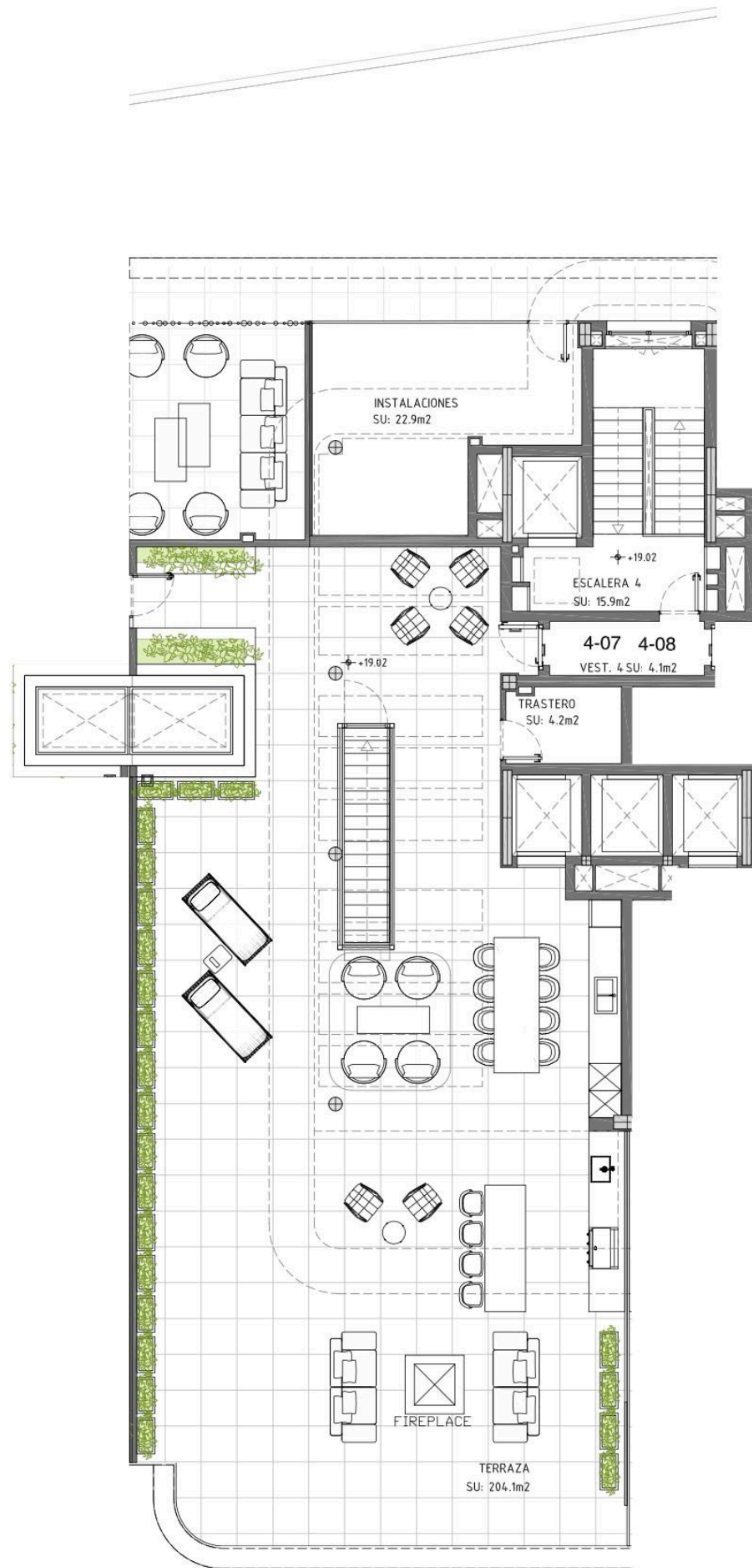
\*All dimensions are approximate and will depend on the final layout of the construction.

### FLOOR 4



\*Indicative plan, not legally binding.

\*This document is for informational purposes and may undergo changes due to technical requirements of the project. All furniture, including kitchen furnishings, is for reference only. The door swings and the layout of sanitary fixtures are not binding. The indicated surface areas are approximate and may be subject to modifications for technical reasons during the execution of the works. The surface areas listed below have been calculated in accordance with Decree 218/2005 on consumer information regarding the sale and rental of homes in Andalusia.



## Solarium

3 BEDROOM DATE: SEPTEMBER 2024  
 PENTHOUSE SCALE: 1/100 (A2)

PROPERTY: DEI HOMES SL. ARCHITECT: MOISÉS GARCÍA GONZÁLEZ

### Usable Area

Utility Room	22,90m <sup>2</sup>
Terrace	204,10m <sup>2</sup>
Storage Room	4,20m <sup>2</sup>

\*All dimensions are approximate and will depend on the final layout of the construction.

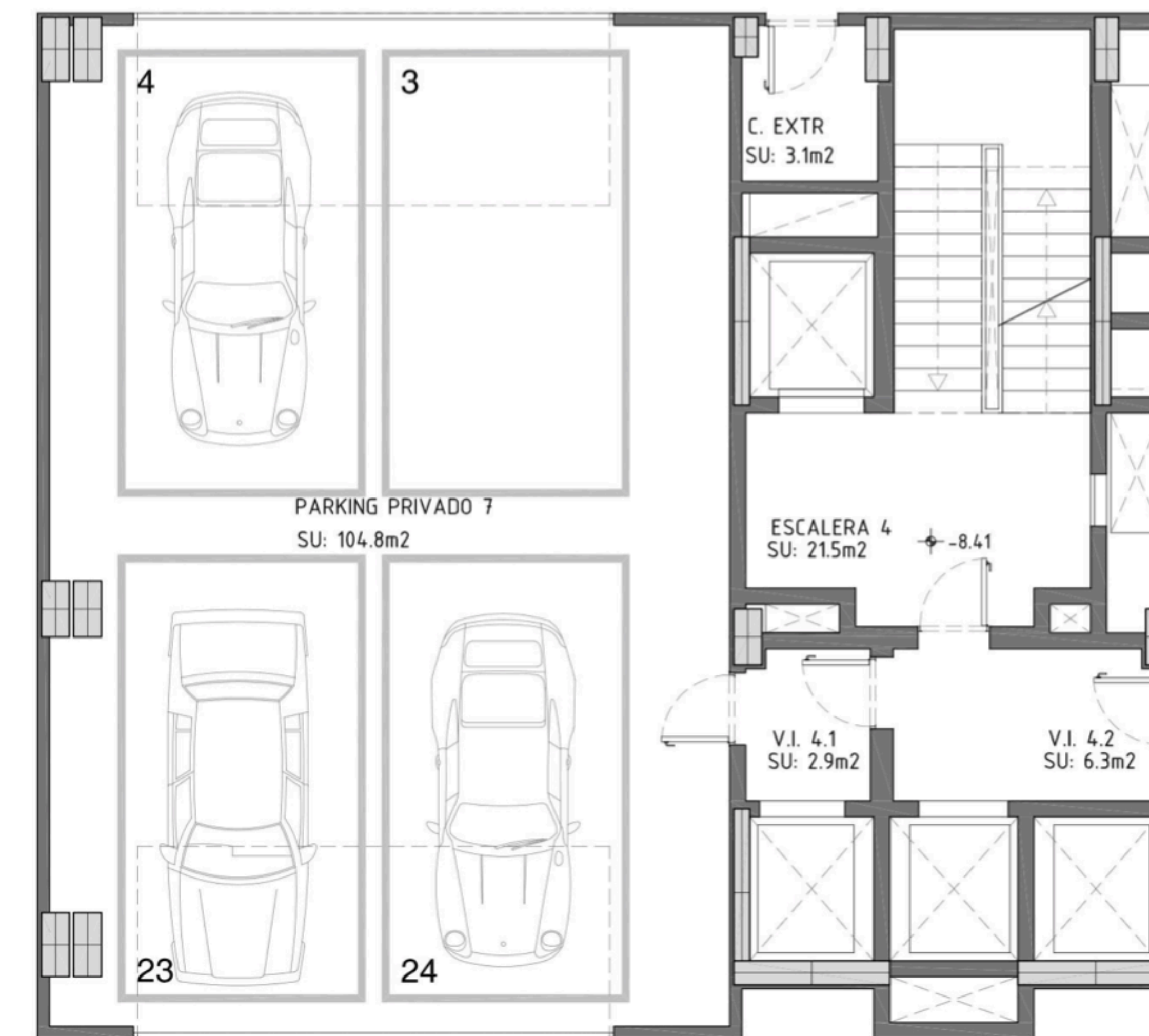
### SOLARIUM



\*Indicative plan, not legally binding.

\*This document is for informational purposes and may undergo changes due to technical requirements of the project. All furniture, including kitchen furnishings, is for reference only. The door swings and the layout of sanitary fixtures are not binding. The indicated surface areas are approximate and may be subject to modifications for technical reasons during the execution of the works. The surface areas listed below have been calculated in accordance with Decree 218/2005 on consumer information regarding the sale and rental of homes in Andalusia.

[QUALITY MEMORY LINK](#)



## Supergarage

3 BEDROOM DATE: SEPTEMBER 2024  
 PENTHOUSE SCALE: 1/100 (A2)

PROPERTY: DEI HOMES SL. ARCHITECT: MOISÉS GARCÍA GONZÁLEZ

### Usable Area

Supergarage	104,80m <sup>2</sup>
-------------	----------------------

\*All dimensions are approximate and will depend on the final layout of the construction.

### FLOOR 4



\*Indicative plan, not legally binding.

\*This document is for informational purposes and may undergo changes due to technical requirements of the project. All furniture, including kitchen furnishings, is for reference only. The door swings and the layout of sanitary fixtures are not binding. The indicated surface areas are approximate and may be subject to modifications for technical reasons during the execution of the works. The surface areas listed below have been calculated in accordance with Decree 218/2005 on consumer information regarding the sale and rental of homes in Andalusia.

[QUALITY MEMORY LINK](#)



CHRISTIE'S  
INTERNATIONAL REAL ESTATE  
———— COSTA DEL SOL ————

Where *Luxury* lives

Velázquez, 1, 29602 Marbella, España  
+34 951 122 313 | marbella@cire-costadelsol.com

Paseo de Reding, 25, 29016 Málaga, España  
+34 951 122 312 | malaga@cire-costadelsol.com