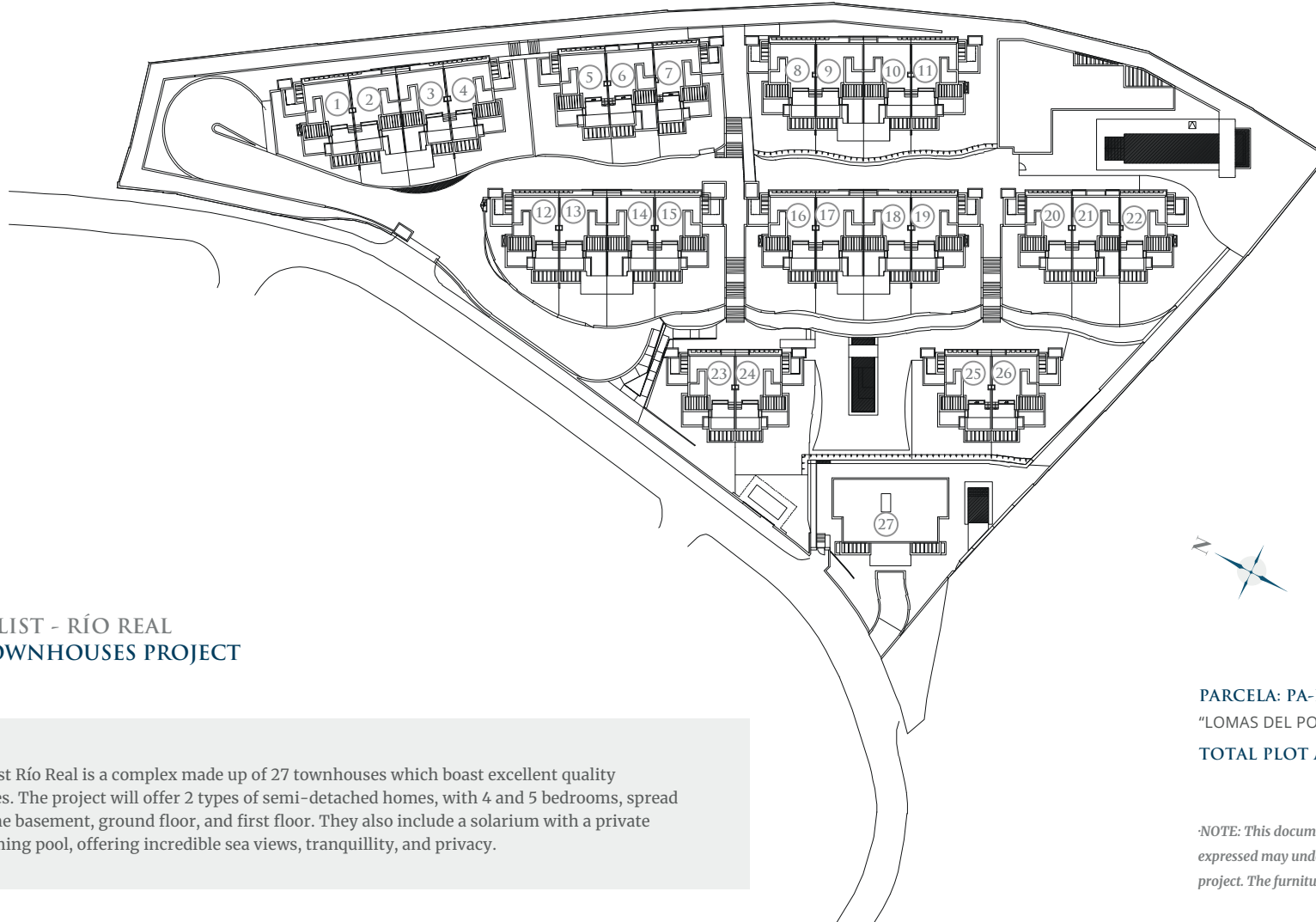


THE LIST

SINGULAR HOMES

- RÍO REAL -



THE LIST - RÍO REAL 27 TOWNHOUSES PROJECT

The List Río Real is a complex made up of 27 townhouses which boast excellent quality finishes. The project will offer 2 types of semi-detached homes, with 4 and 5 bedrooms, spread over the basement, ground floor, and first floor. They also include a solarium with a private swimming pool, offering incredible sea views, tranquillity, and privacy.

PARCELA: PA-RR-9.
"LOMAS DEL POZUELO". MARBELLA
TOTAL PLOT AREA: 11.834,65 m²

NOTE: This document is informative. The floor plans and areas expressed may undergo variations due to technical demands of the project. The furniture shown is not included being merely illustrative.

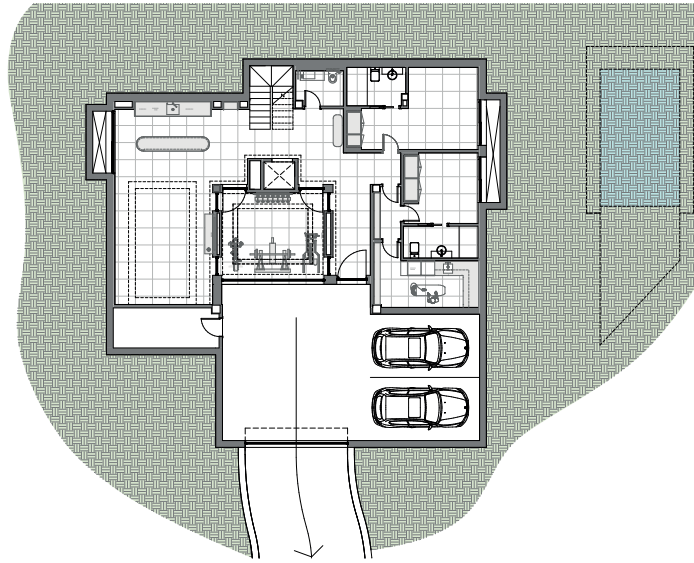
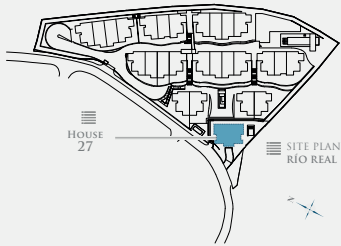
(* This plan may be modified depending on progress of the development. The furniture shown is purely for decorative purposes. The project manager reserves the right to make the necessary changes for any possible functional, aesthetic and legal reasons, without this negatively affecting the quality of the construction. Illustrative dimensions.

THE LIST

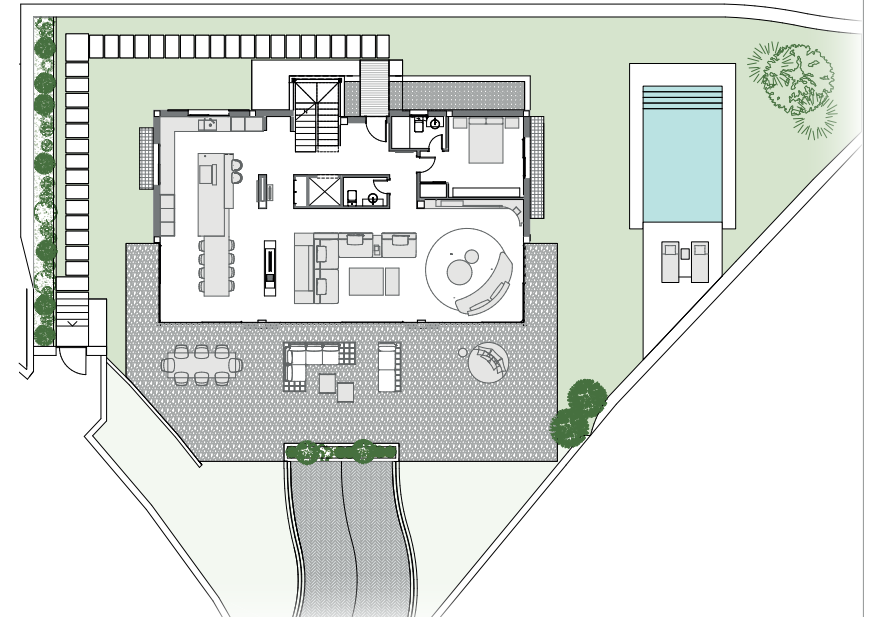
SINGULAR HOMES

- RÍO REAL -

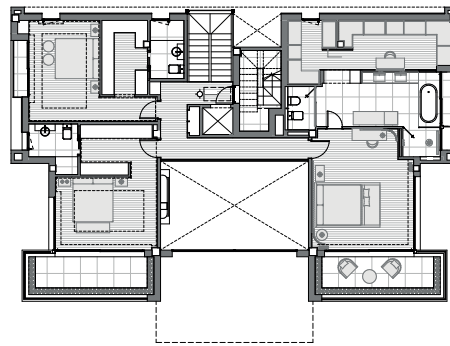
27 FLOOR PLAN



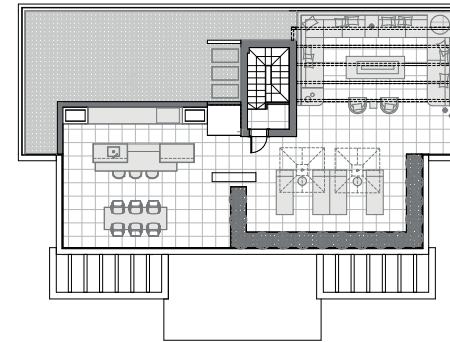
- BASEMENT -



- GROUND FLOOR -



- FIRST FLOOR -



- ROOF FLOOR -

27 FLOORS

FLOORS

TOTAL USEFUL AREA		500,95 m²
TOTAL USEFUL AREA ACCORDING RD 218		551,05 m²
BUILT AREA	LIVING AREA	340,95 m ²
	BASEMENT	257,13 m ²
	TERRACES	385,72 m ²
PRIVATE GARDEN		276,73 m ²
TOTAL BUILT AREA		983,80 m²

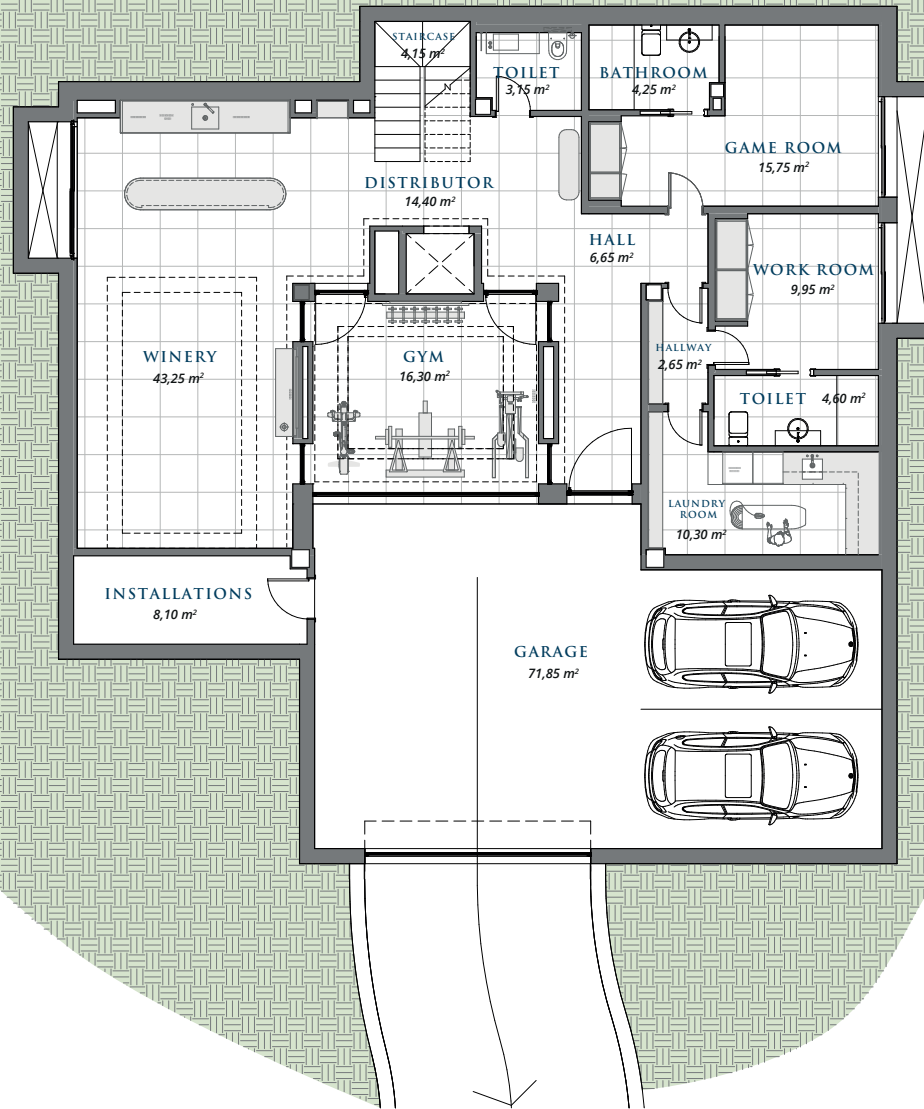
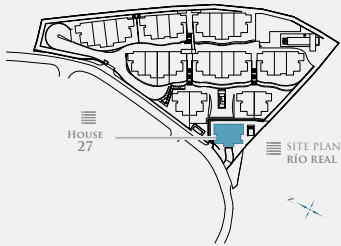
(*) This plan may be modified depending on progress of the development. The furniture shown is purely for decorative purposes. The project manager reserves the right to make the necessary changes for any possible functional, aesthetic and legal reasons, without this negatively affecting the quality of the construction. Illustrative dimensions.

THE LIST

SINGULAR HOMES

- RÍO REAL -

27 FLOOR PLAN



BASEMENT

Closed	176,30 m ²
Garage	80,83 m ²
TOTAL BUILT AREA	257,13 m²
TOTAL USEFUL AREA	215,25 m²

27 BASEMENT

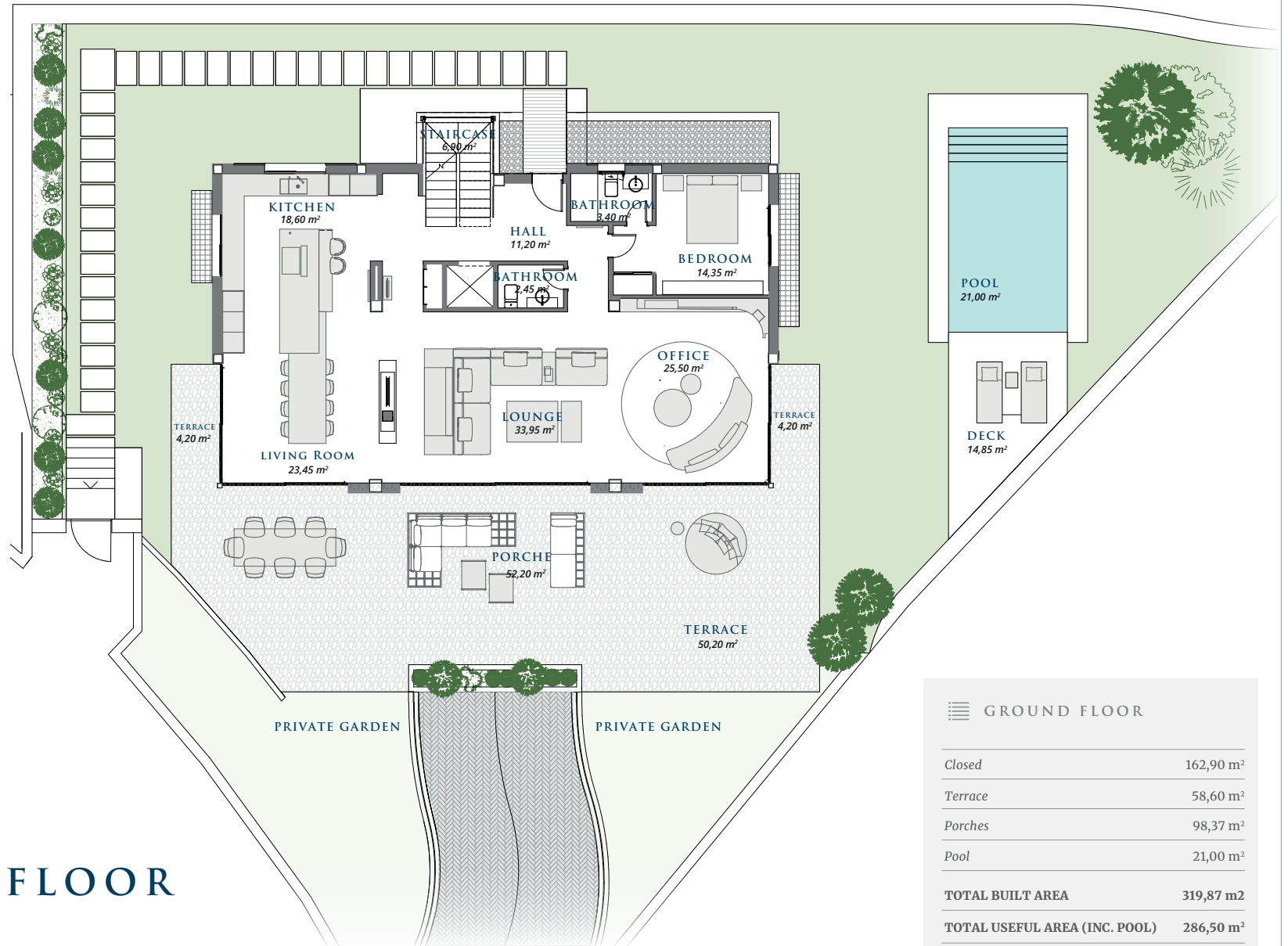
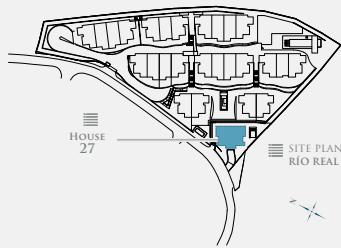
(*) This plan may be modified depending on progress of the development. The furniture shown is purely for decorative purposes. The project manager reserves the right to make the necessary changes for any possible functional, aesthetic and legal reasons, without this negatively affecting the quality of the construction. Illustrative dimensions.

THE LIST

SINGULAR HOMES

- RÍO REAL -

27 FLOOR PLAN



GROUND FLOOR

Closed	162,90 m ²
Terrace	58,60 m ²
Porches	98,37 m ²
Pool	21,00 m ²
TOTAL BUILT AREA	319,87 m²
TOTAL USEFUL AREA (INC. POOL)	286,50 m²

27 GROUND FLOOR

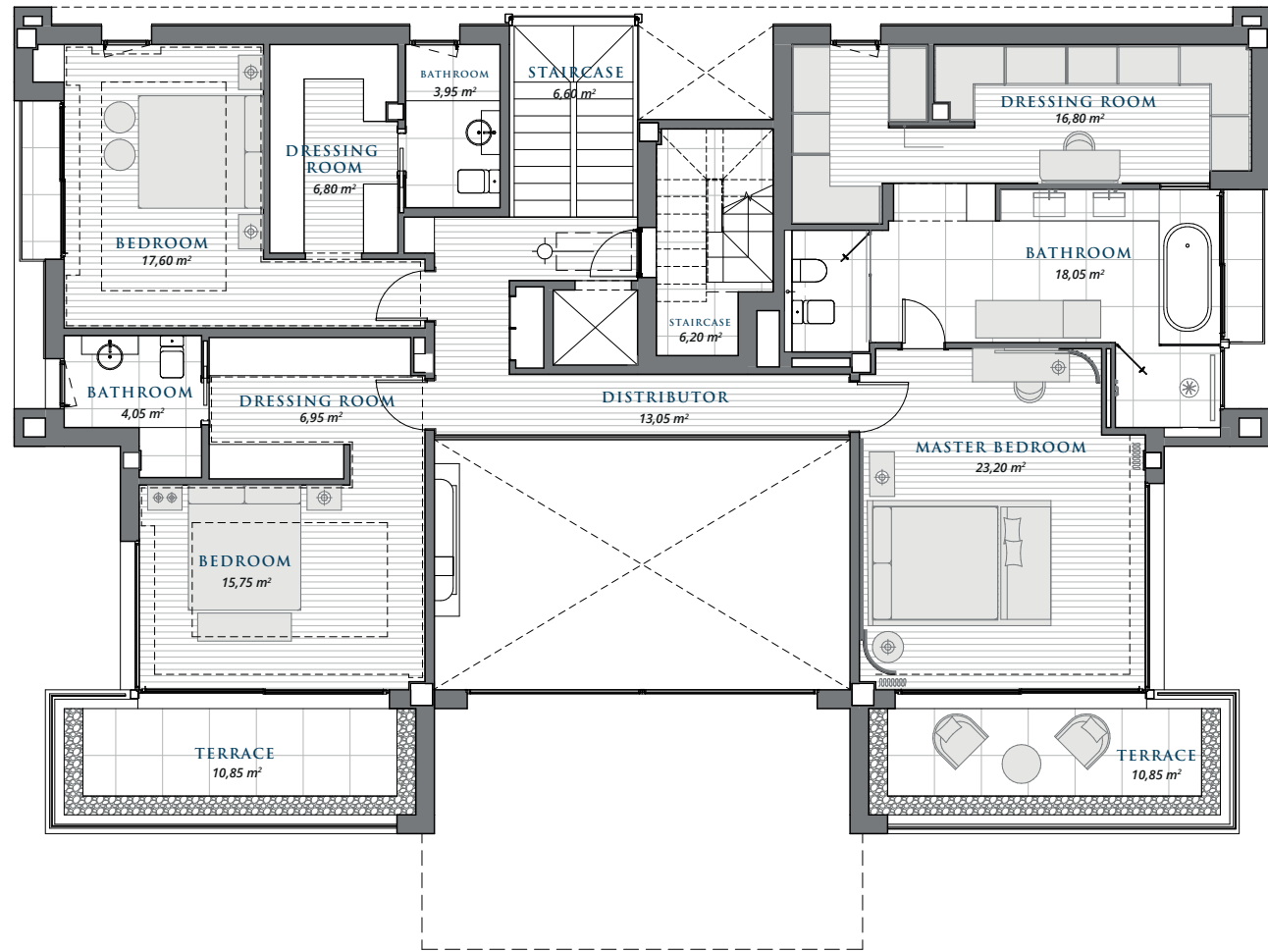
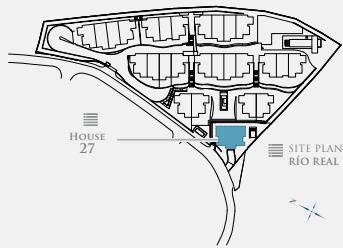
(*) This plan may be modified depending on progress of the development. The furniture shown is purely for decorative purposes. The project manager reserves the right to make the necessary changes for any possible functional, aesthetic and legal reasons, without this negatively affecting the quality of the construction. Illustrative dimensions.

THE LIST

SINGULAR HOMES

- RÍO REAL -

27 FLOOR PLAN



27 FIRST FLOOR

FIRST FLOOR

Closed	167,25 m ²	TOTAL BUILT AREA	197,85 m ²
Porche	5,00 m ²	TOTAL USEFUL AREA	163,30 m ²
Terraces	25,60 m ²		

(*) This plan may be modified depending on progress of the development. The furniture shown is purely for decorative purposes. The project manager reserves the right to make the necessary changes for any possible functional, aesthetic and legal reasons, without this negatively affecting the quality of the construction. Illustrative dimensions.

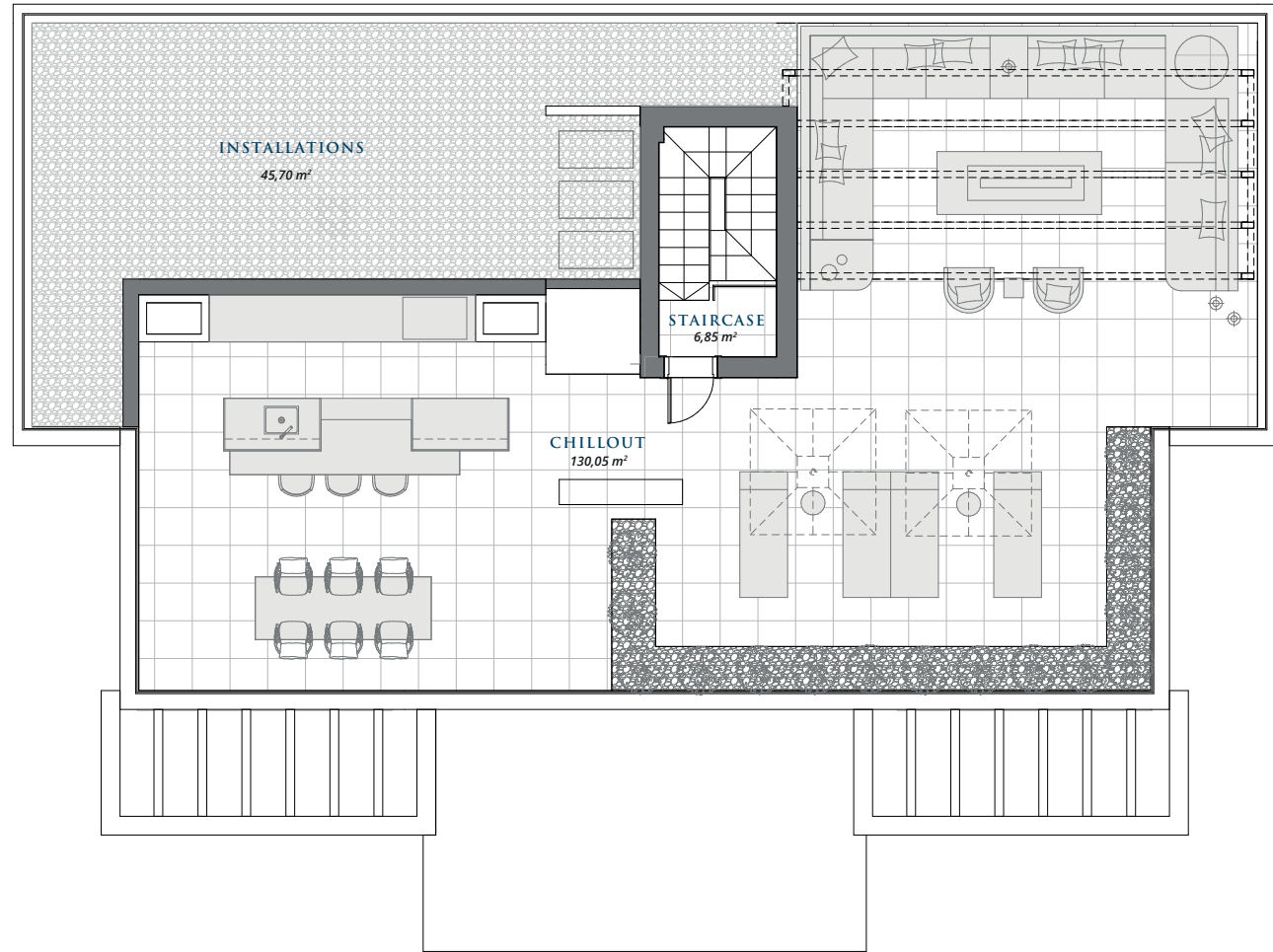
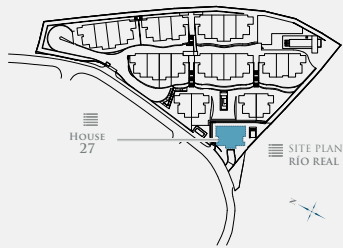
THE LIST

SINGULAR HOMES

- RÍO REAL -

27

FLOOR PLAN



27 ROOF FLOOR

ROOF FLOOR

Closed	10,80 m ²	TOTAL BUILT AREA	208,95 m ²
Terraces	198,15 m ²	TOTAL USEFUL AREA	182,60 m ²

(*) This plan may be modified depending on progress of the development. The furniture shown is purely for decorative purposes. The project manager reserves the right to make the necessary changes for any possible functional, aesthetic and legal reasons, without this negatively affecting the quality of the construction. Illustrative dimensions.