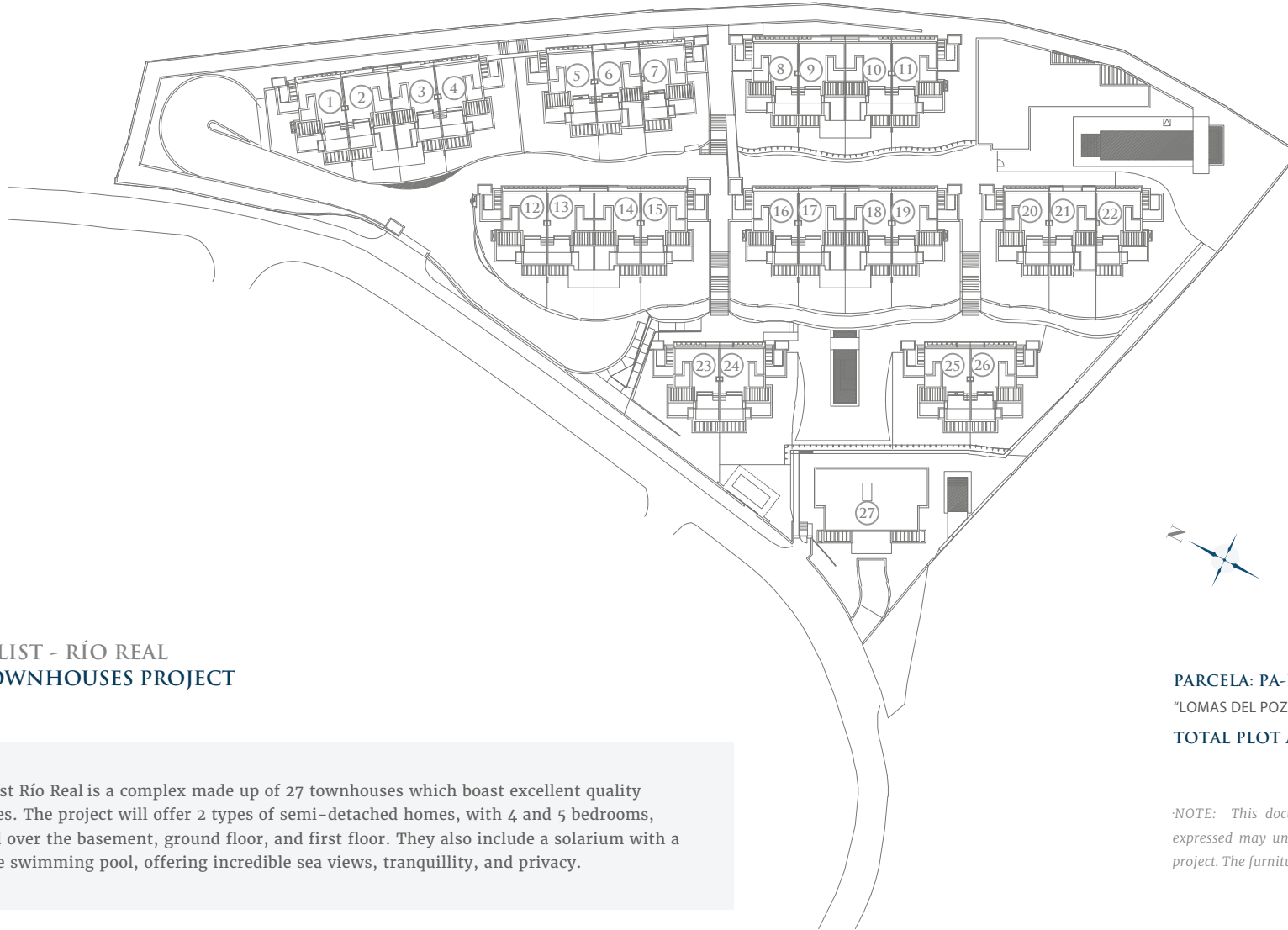


THE LIST

SINGULAR HOMES

- RÍO REAL -



THE LIST - RÍO REAL 27 TOWNHOUSES PROJECT

The List Río Real is a complex made up of 27 townhouses which boast excellent quality finishes. The project will offer 2 types of semi-detached homes, with 4 and 5 bedrooms, spread over the basement, ground floor, and first floor. They also include a solarium with a private swimming pool, offering incredible sea views, tranquillity, and privacy.

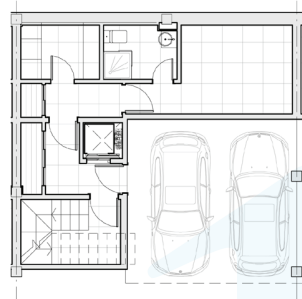
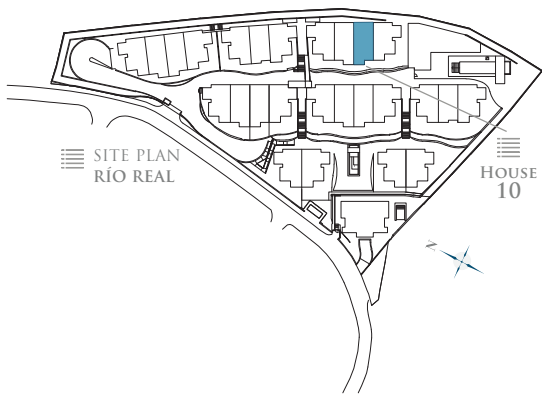
PARCELA: PA-RR-9.
"LOMAS DEL POZUELO". MARBELLA
TOTAL PLOT AREA: 11.973,45 M²

NOTE: This document is informative. The floor plans and areas expressed may undergo variations due to technical demands of the project. The furniture shown is not included being merely illustrative.

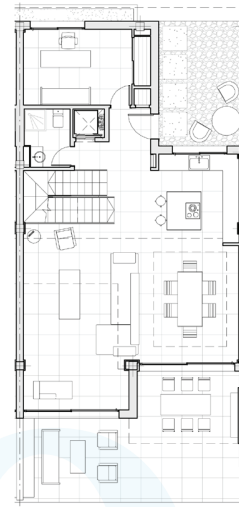


10
FLOOR PLAN

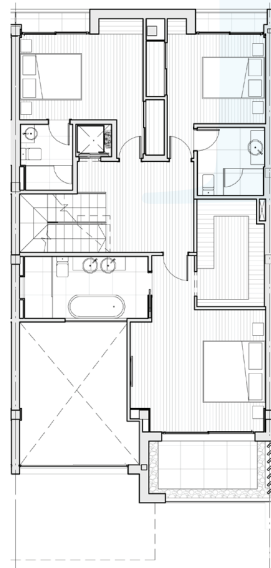
FLOORS
- HOUSE TEN -



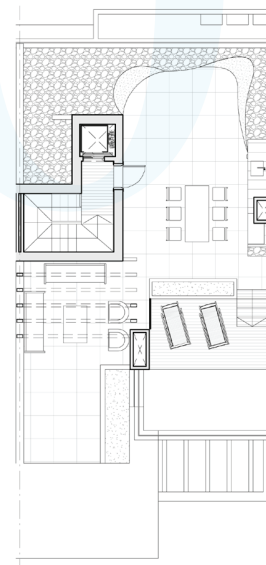
- BASEMENT -



- GROUND FLOOR -



- FIRST FLOOR -



- ROOF FLOOR -

TOTAL USEFUL AREA:
227,95 m²

TOTAL USEFUL AREA
ACCORDING TO RD 218/2005:
250,75 m²

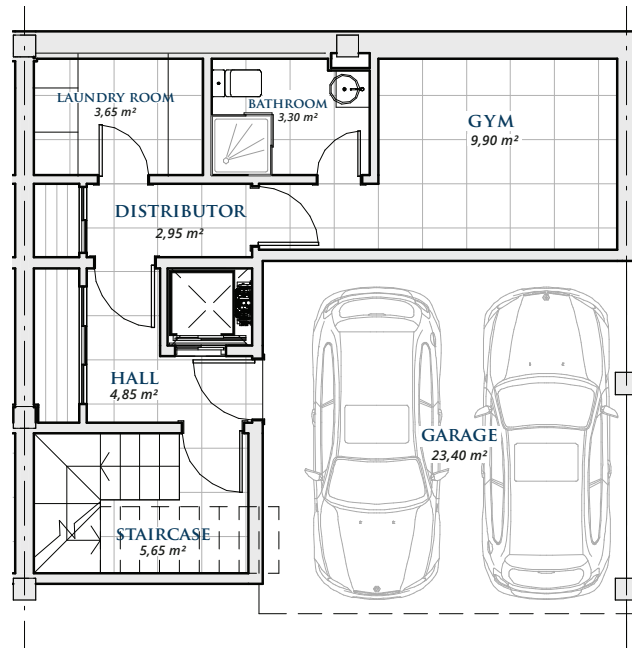
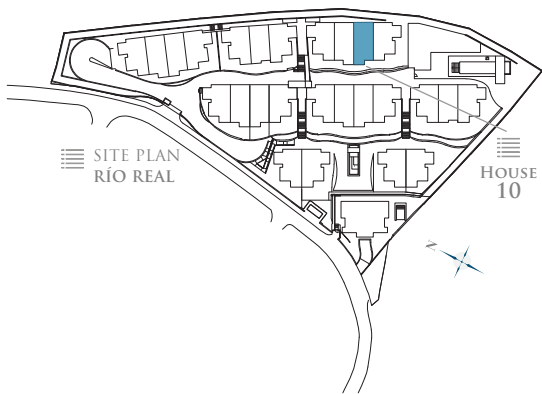
BUILT AREA

LIVING AREA	210,25 m ²
TERRACES	144,95 m ²
BASEMENT	63,32 m ²
PRIVATE GARDEN	6,45 m ²
TOTAL BUILT AREA:	418,52 m²



10
FLOOR PLAN

BASEMENT
- HOUSE TEN -



BASEMENT

BASEMENT	39,67 m ²
GARAGE	23,65 m ²
TOTAL BUILT AREA:	63,32 m²

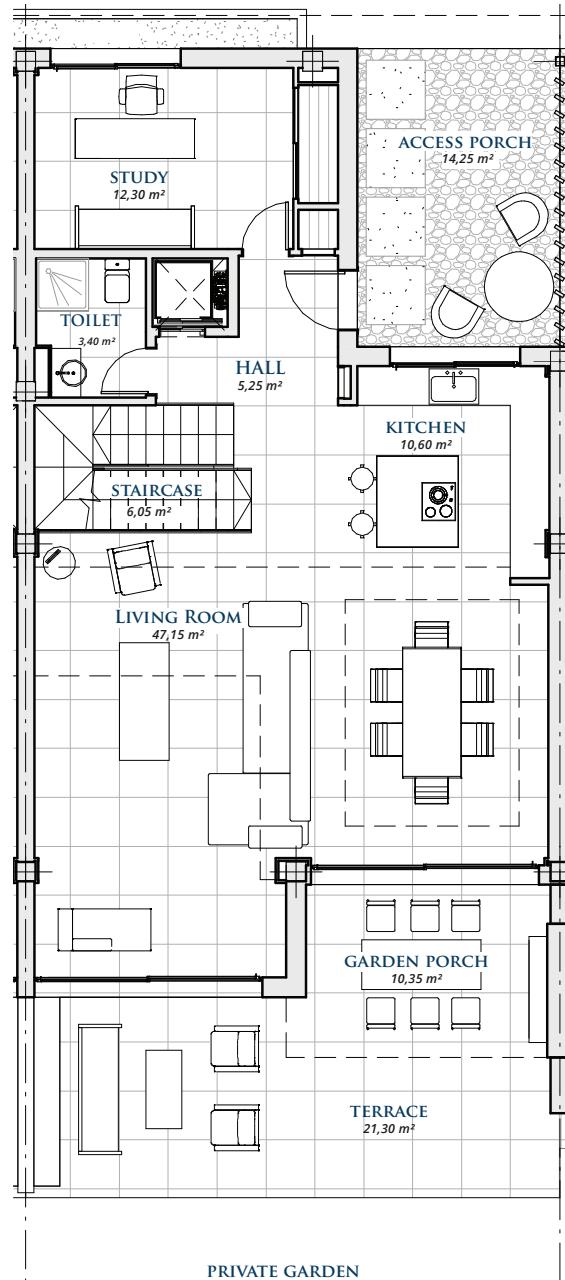
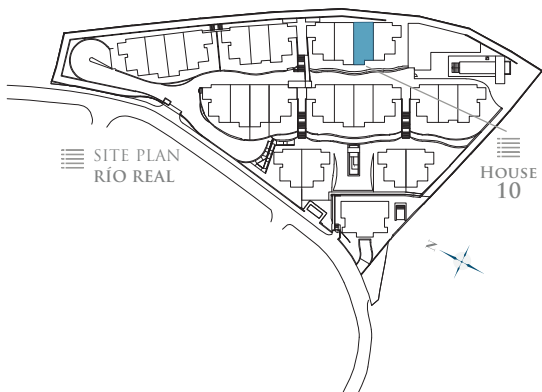
* Basements are subject to modifications due to installation requirements.

GRAPHIC SCALE 1:100



10
FLOOR PLAN

GROUND FLOOR
- HOUSE TEN -



GROUND FLOOR

LIVING AREA	98,25 m ²
TERRACE	38,40 m ²
TOTAL BUILT AREA:	136,65 m ²

GRAPHIC SCALE 1:100



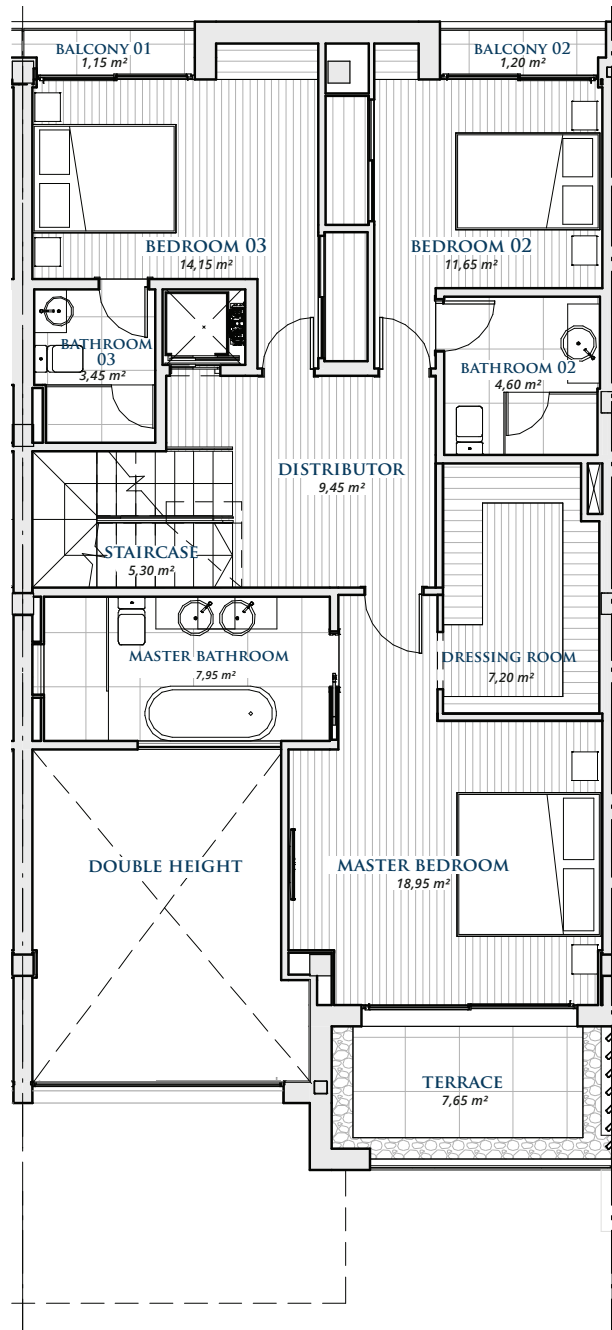
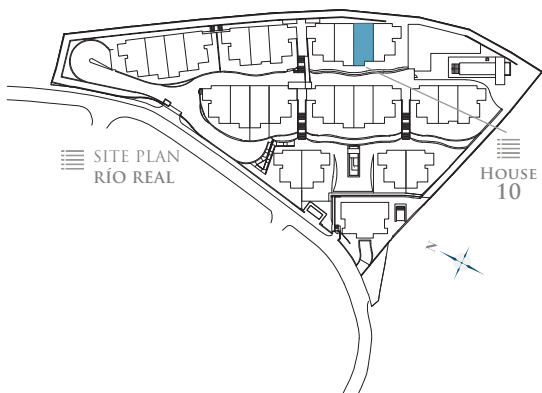
THE LIST

SINGULAR HOMES

- RÍO REAL -

10 FLOOR PLAN

FIRST FLOOR - HOUSE TEN -



FIRST FLOOR

LIVING AREA 100,00 m²

TERRACE 10,5 m²

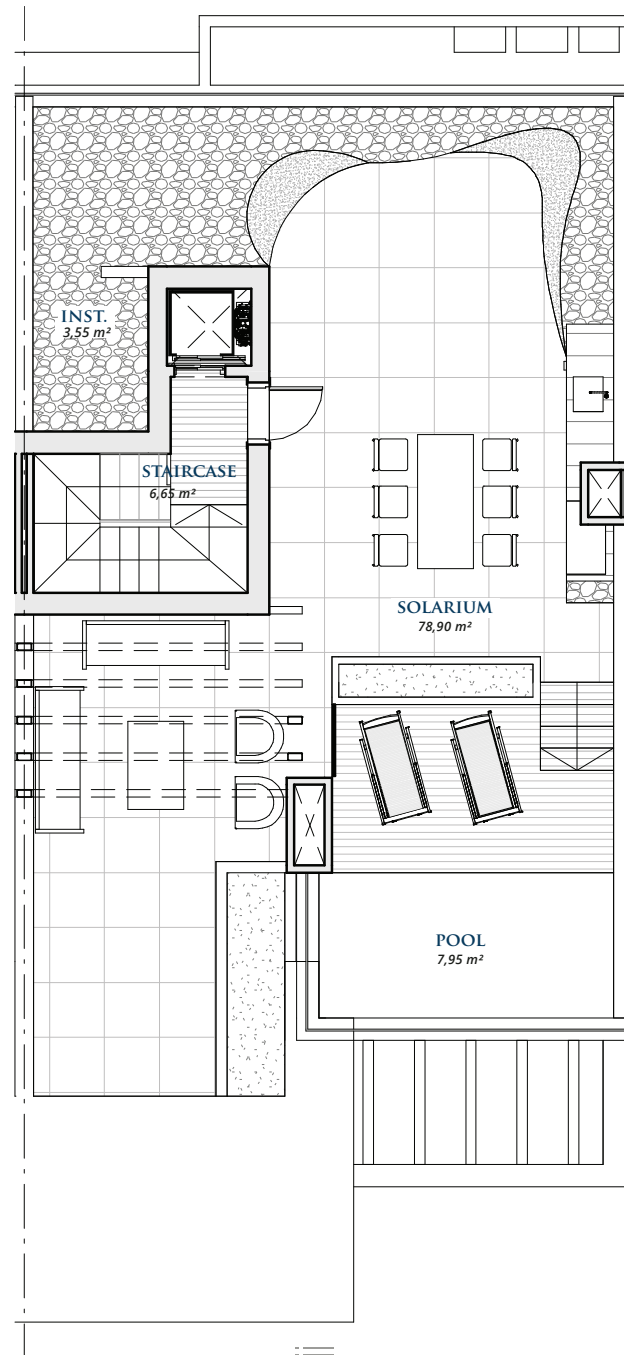
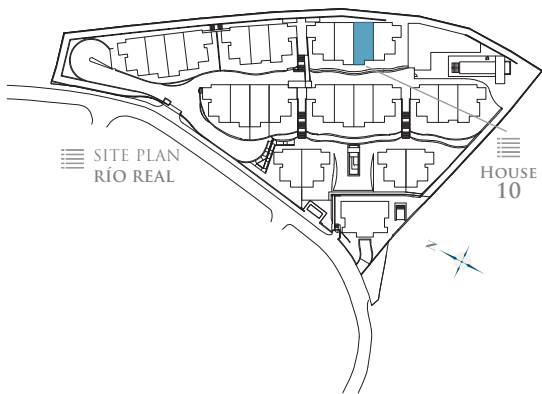
TOTAL BUILT AREA: 110,50 m²

GRAPHIC SCALE 1:100



10
FLOOR PLAN

ROOF FLOOR
- HOUSE TEN -



ROOF FLOOR

CLOSED AREA	12,00 m ²
TERRACE	96,05 m ²
TOTAL BUILT AREA:	108,05 m ²

GRAPHIC SCALE 1:100

