

# THE AVENUE

M A R B E L L A

---

## Villa II

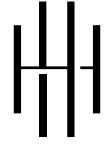
Tipology B2

Bedrooms  
4

Bathrooms  
5+2

Orientation  
N

PRICE ON REQUEST



# THE AVENUE

M A R B E L L A

## VILLA 11

PLOT 969,88 m<sup>2</sup>

---

### BUILT AREA

---

Living Area 506,78 m<sup>2</sup>

---

Terrace Area 177,58 m<sup>2</sup>

---

**TOTAL BUILT AREA 684,35 m<sup>2</sup>**

ACCORDING TO DECRETO 218/2005

---

Useful Area 434,56 m<sup>2</sup>

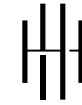
---

Built Area 546,28 m<sup>2</sup>



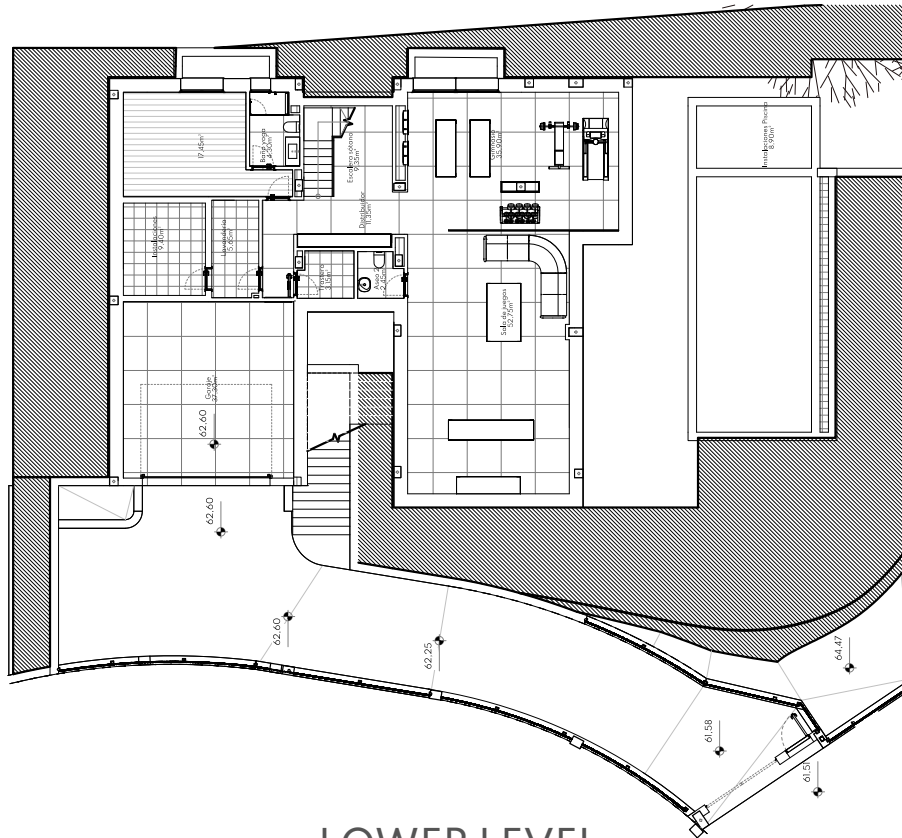
This plan may be modified depending on progress of the development. The furniture shown is purely for decorative purposes. The project manager reserves the right to make the necessary changes for any possible functional, aesthetic and legal reasons, without this negatively affecting the quality of the construction. Illustrative dimensions.



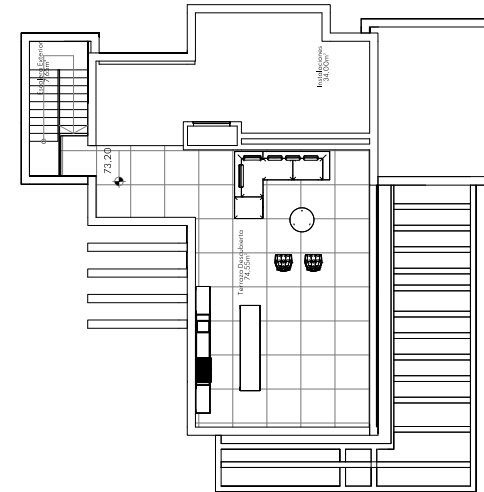


# THE AVENUE

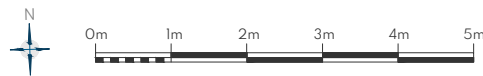
MARBELLA



LOWER LEVEL



SOLARIUM



This plan may be modified depending on progress of the development. The furniture shown is purely for decorative purposes. The project manager reserves the right to make the necessary changes for any possible functional, aesthetic and legal reasons, without this negatively affecting the quality of the construction. Illustrative dimensions.