

VILLA AMARA

EL HERROJO, BENAHAVIS



STUNNING NEW-BUILD VILLA WITH PRIME LOCATION IN EL HERROJO

Villa Amara is a stunning new-build villa by the esteemed architect and interior design firm GC Studio. Sitting on a generous elevated plot, Villa Amara grants residents an exclusive and sophisticated lifestyle.

Beds: 8 | **Baths:** 9+1 | **Plot:** 3.631m² | **Built:** 958m² | **Parking:** 5 | **Orientation:** S/E



The property lies on a plot boasting stunning landscaping and manicured gardens. A private pool adds to the allure of the outdoor space, as well as the numerous chill-out areas. Residents can also enjoy an outdoor kitchenette with a BBQ, ideal for entertaining guests or simply enjoy a meal outdoors.



The property is dotted with plenty of floor to ceiling windows, ensuring that plenty of natural light will flood the interior spaces. The interior design is impeccable, displaying the finest collection for furniture and decorations. The interiors have been designed to maximise modern comfort, whilst remaining aesthetic and functional.







The living and dining areas are seamlessly connected to the modern kitchen. The kitchen boasts a stunning kitchen island and plenty of storage space, ensuring the kitchen is the ideal space for cooking and entertaining.

Villa Amara boasts stunningly appointed bedrooms, with the master bedroom stealing the spotlight. The master bedroom is an ideal private oasis, exuding comfort and style. The bedroom is connected to a private terrace that sports panoramic views of the surrounding area and Mediterranean sea.















Villa Amara also boasts a lavish array of amenities, including a fully equipped home gym, a cinema room and a SPA with a sauna and indoor pool, allowing residents to enjoy luxurious 5-star amenities in the comfort of their own home.

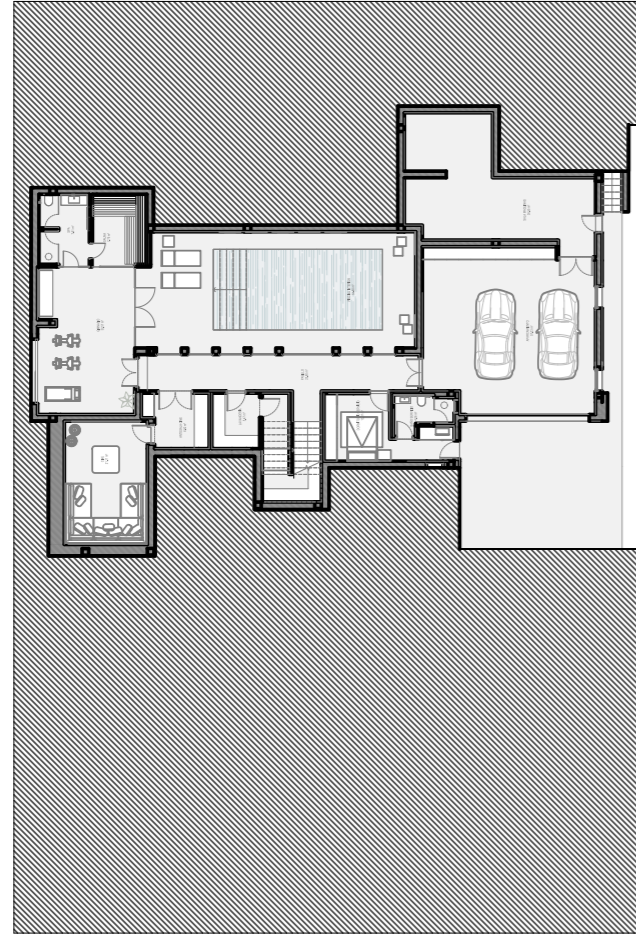




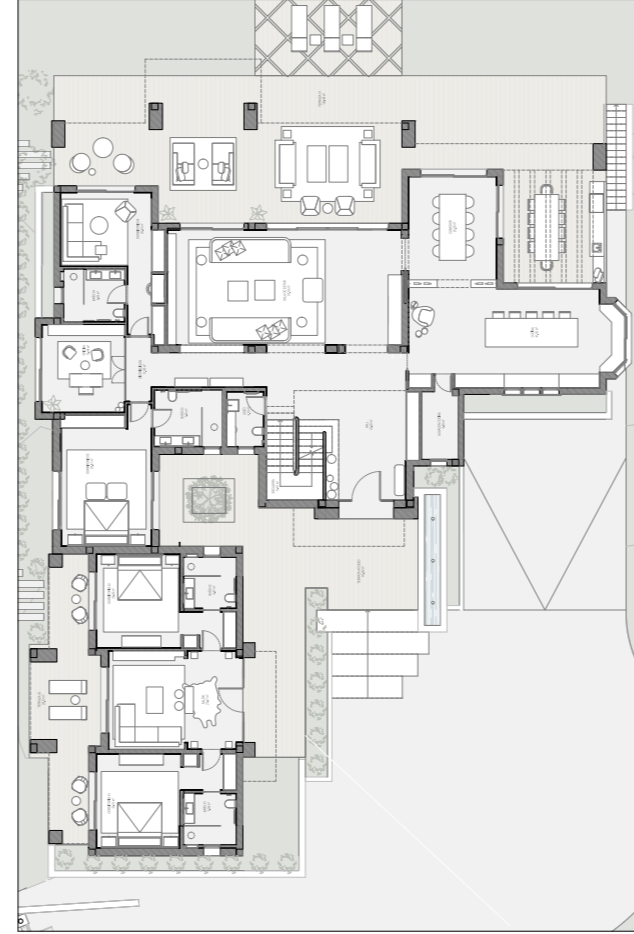


Villa Amara enjoys a coveted location within the gated community of El Herrojo in La Quinta. At the point where Marbella and Benahavis meet, La Quinta borders both the golf courses and residential areas of Nueva Andalucía, and the open countryside that stretches inland. It is a well-established suburb close to the town of San Pedro Alcántara and Benahavis, close to all amenities yet set within its own oasis of privacy and exclusivity.

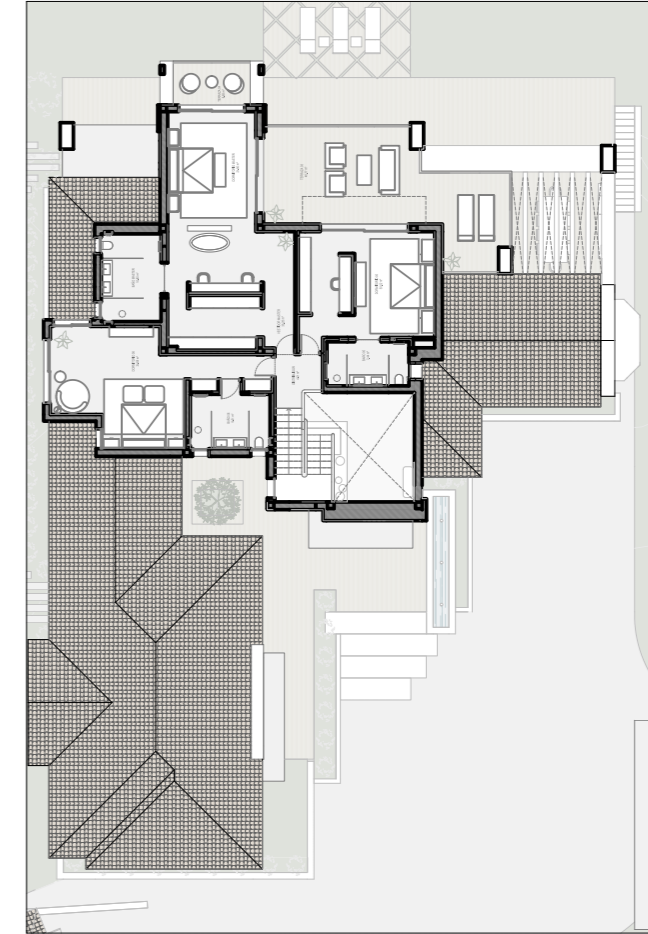
LOWER LEVEL



GROUND LEVEL



UPPER LEVEL



Beds: 8 | Baths: 9+1 | Plot: 3.631m² | Built: 958m² | Parking: 5 | Orientation: S/E

