

TH
SK
Pha

Index

DEVELOPED BY RIVESTIA	6
LOCATION	8
MARBELLA	10
THE PROXIMITY	12 - 15
THE PROJECT	16
VILLAS	18 - 37
APARTMENT	38 - 61
THE QUALITIES	62

AN ENDLESS DIALOGUE
BETWEEN HOME,
THE SKY AND THE SEA



RIVE



Developed by

RIVESTIA COSTA DEL SOL

A Swiss real estate business with a chapter in Spain looking to redefine the idea of luxury.

We create high-end homes where every detail is meticulously designed to offer their residents an unmitigated freedom to be themselves.

Anchored by values of design and excellence, precision and expertise, we strive every day to create a new standard of living for our clients.





START 5 MIN. 15 MIN. 30 MIN. 45 MIN.

THE SKY
MARBELLA

FIRST GOLF
COURSE

PUERTO
BANÚS

SOTOGRADE

AIRPORT
MÁLAGA



THE SKY

Location

WHERE THE HORIZON LIES AT YOUR FEET.

Situated atop La Quinta in Benahavís, on the southern edge of El Madroñal, The Sky Marbella offers the perfect blend of space, intimacy and freedom.

Your retreat is both secluded and accessible.

At just 5 minutes from the AP7 motorway to Málaga Airport - which is a 45 minutes drive - you are easily connected to a world of destinations.



Marbella

ONE OF THE HIGHEST REGARDED
RESIDENTIAL SPOTS IN EUROPE.

The Golden Triangle (Marbella, Estepona and Benahavís) where The Sky Marbella is located, offers the perfect balance between coastal luxury and cultural authenticity.

An enclave that combines the charms of historic heritage with the comfort of a modern city, that has become one of the most coveted spots in all of Europe.



The proximity

JUST A FEW MINUTES FROM
YOUR ENCLAVE OF LUXURY,
A RANGE OF AMENITIES AWAITS.

Five scenic golf courses:

La Quinta, Los Arqueros, Los Naranjos,

Las Brisas and Aloha that offer

fabulous Club Houses & Restaurants are all located
just 5 to 15 minutes drive from your place.



14

15

Driving through amazing natural surroundings on the Ronda road, in just a couple of minutes after turning right towards your enclave of serenity and calm, you are truly at home.

Guarded by the majestic mountains in the back and open towards the Mediterranean in front, your dwelling is engulfed in a sense of peaceful energy from the land, the sky and the sea.



The project

AN EXCEPTIONAL HIGH-END GATED
COMMUNITY OF 16 VILLAS AND
50 APARTMENTS AND PENTHOUSES.

THE EPITOME OF THE HIGHEST
LEVEL OF LUXURY AND REFINEMENT.

Spectacular panoramic sea
and mountain views.

Gated community with 24h security.

World class social areas.

Exceptionally spacious interiors.

Villas

16 LUXURY VILLAS
OF APPROX 869 m² INTERIOR BUILT,
1,048 M2 PLOT, 5-6 BEDROOMS.





THE SKY VILLAS BY

Manuel Burgos

"We wanted to create a sense of weightlessness, as if the homes were floating amidst the landscape"

– *The architect of THE SKY VILLAS*

The premise was to build houses that were far from ordinary, aiming for the highest quality in detail and infusing them with unique personality to make them stand out.

The soul of The Sky Marbella is defined by its constant bond with nature, as if the natural landscapes that surround it were an art piece that embellishes and compliments life within these spaces.



Spaces that ought to be experienced.
That's how we conceived this project and that's how we created a space so
harmonious in its functionality and even more so in its intimacy.



24

The Sky Marbella is a unique retreat that merges with nature inviting you to transcend the barrier between the natural and the habitable.



25

An architectonic exercise, capable of redefining the limits of design, embracing the landscape and capturing its beauty from the inside out.



KITCHEN & DINING



MASTER BEDROOM



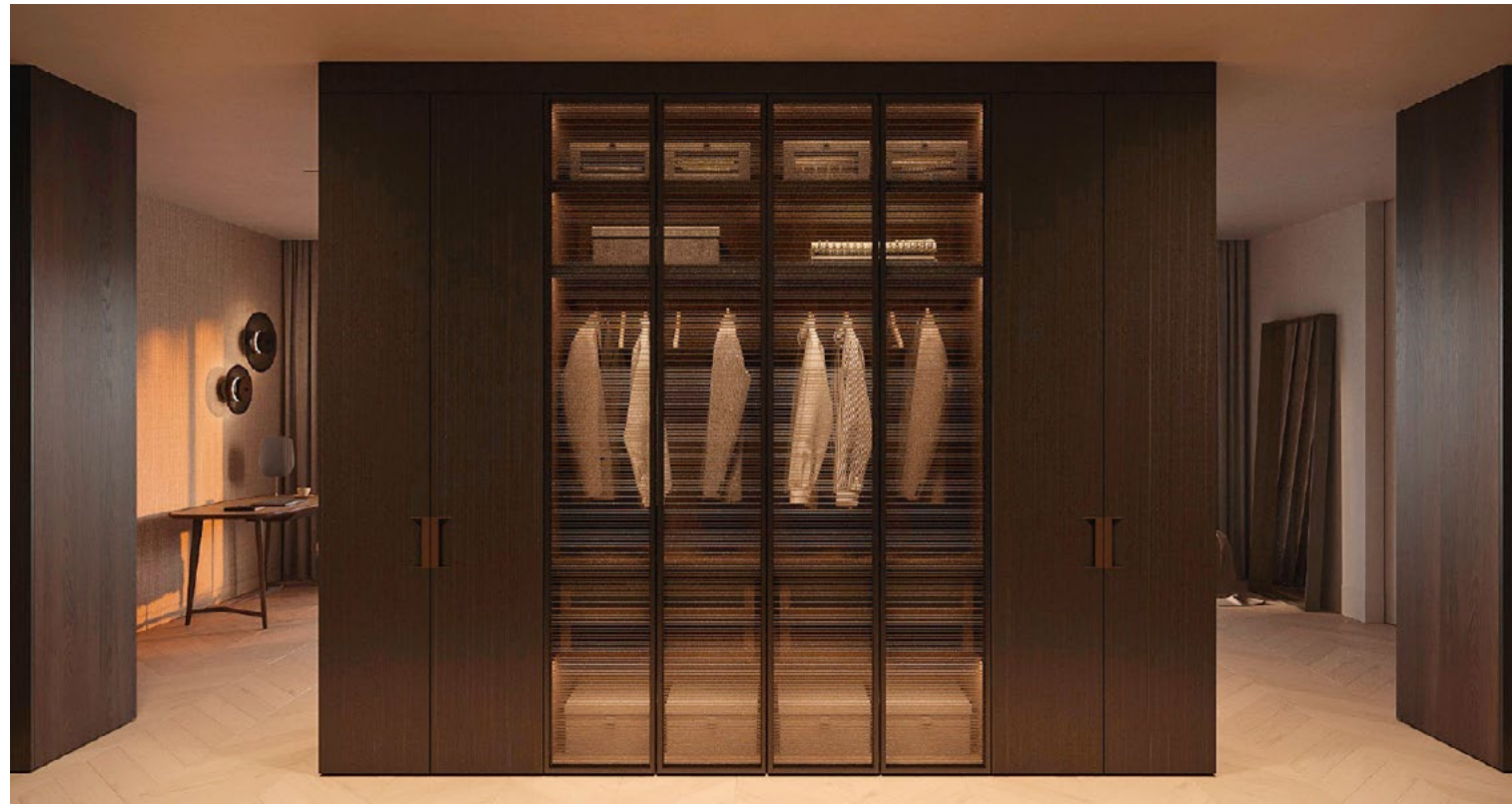
KITCHEN & DINING



MASTER BEDROOM TERRACE



MASTER BEDROOM WALK-IN CLOSET



MASTER BEDROOM BATHROOM



SPA & MASSAGE ROOM



ENTERTAINMENT ROOM



Villa Celeste

1.184 m² Total surface

937 m² Interior built

247 m² Terraces and porches

1.614 m² Plot

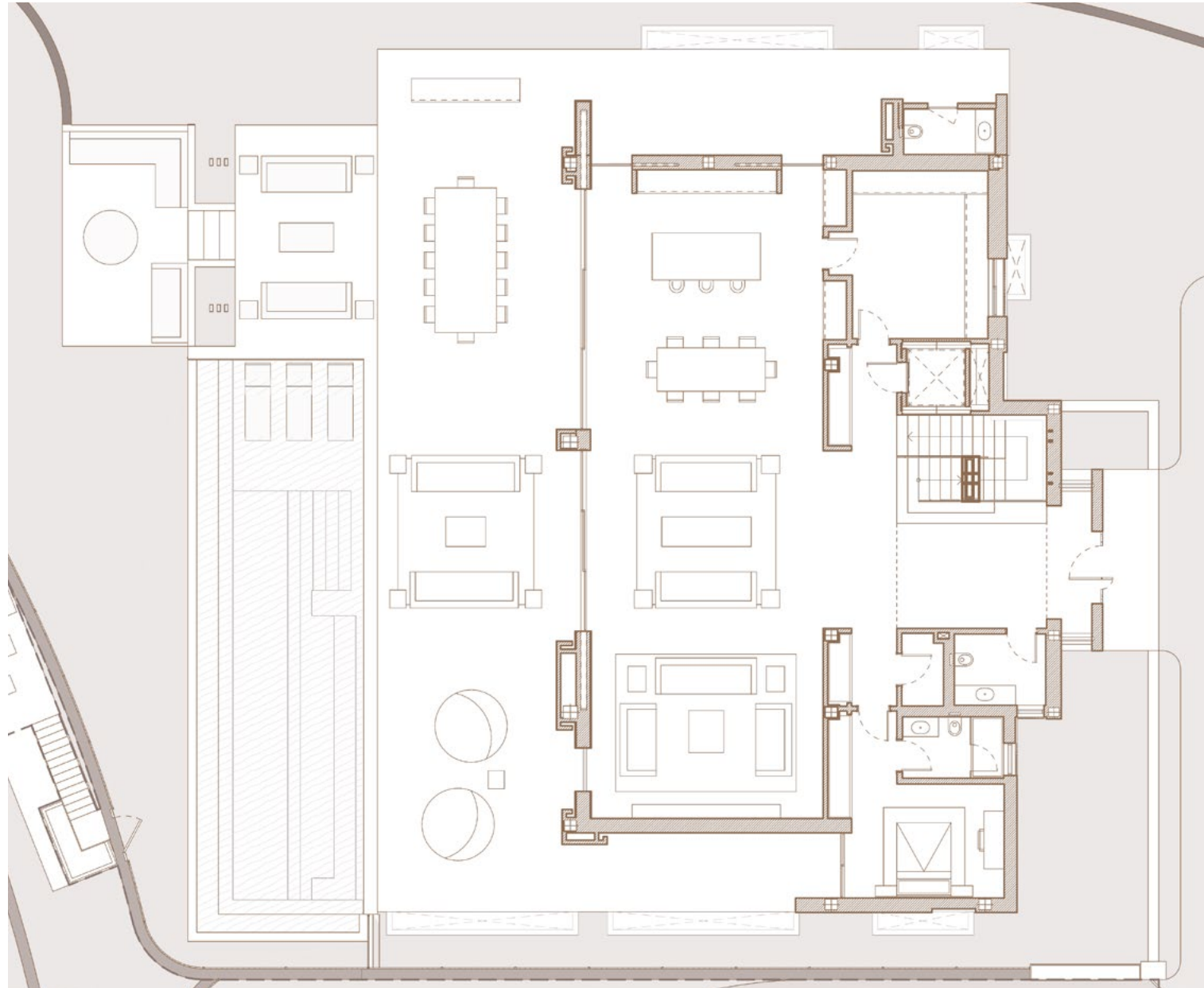
6 Bedrooms

6 Bathrooms

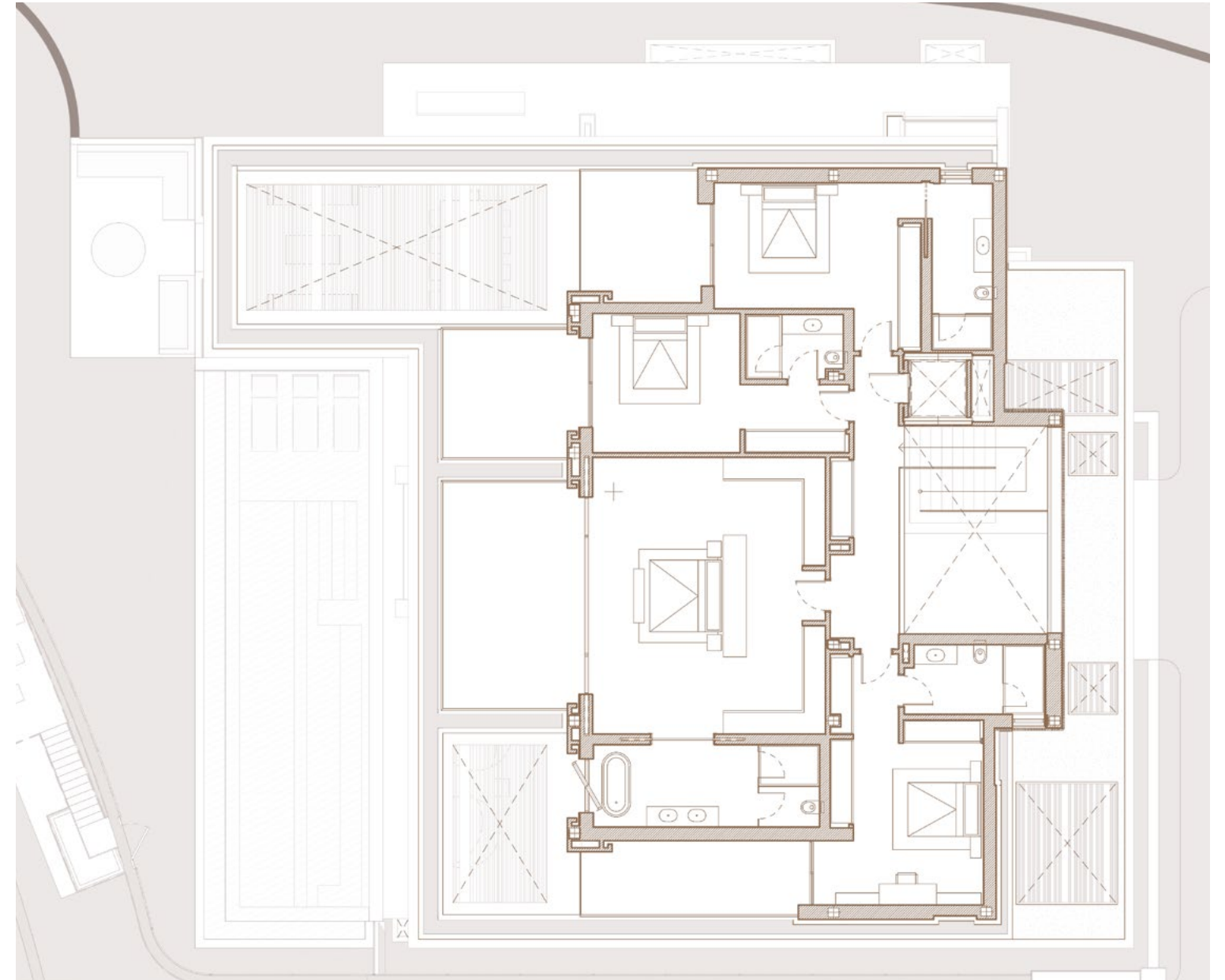
2 Toilets

2 Indoor parking

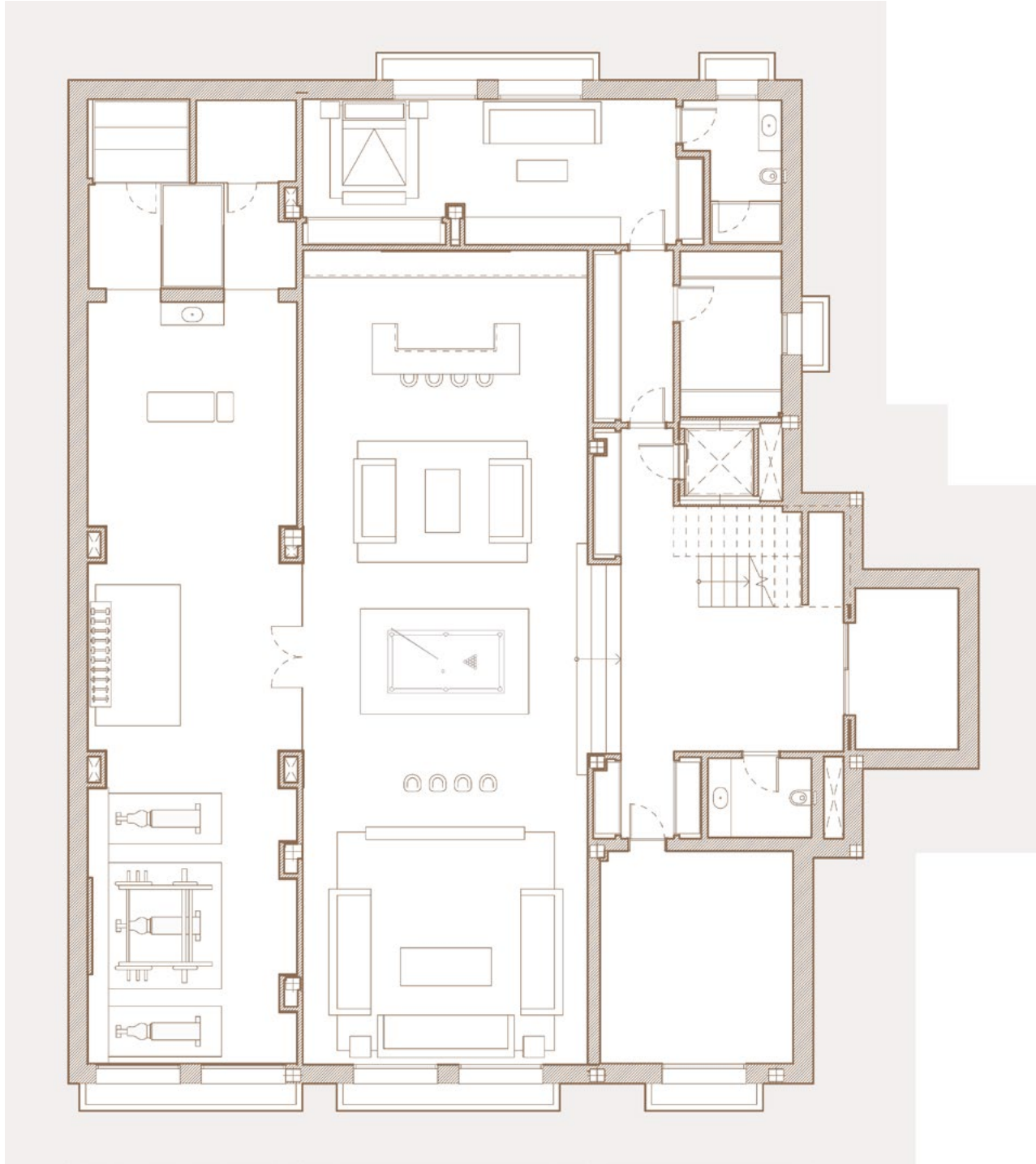
VILLA CELESTE
Ground floor



VILLA CELESTE
First floor



VILLA CELESTE
BASEMENT



THE
Y
umbella

Apartments

50 HIGH END APARTMENTS:
2, 3 AND 4 BEDROOMS,
DUPLEX GROUND FLOOR, MIDDLE FLOOR
AND DUPLEX PENTHOUSES,
FROM 130 TO 473 m² INTERIOR BUILT +
LARGE TERRACES. EACH UNIT HAS ITS
OWN INDIVIDUAL POOL.





THE SKY APARTMENTS BY

Teodoro Cabrilla

"Our mission was to chisel,
using the mountain as our rock and
the Mediterranean Sea as the horizon"

– *The architect of THE SKY APARTMENTS*

The Sky Marbella is the perfect blend of luxury
and sustainability. The project was greatly
influenced by a constant dialogue with nature,
aiming to become one with the environment
without altering its essence.

Our design presents a new concept
of silent, kind, and calm luxury that doesn't
betray sustainability.



42

Every apartment in The Sky Marbella has been designed to embrace the stunning views of the coast, the sea, and the mountains.



43

Spacious terraces with private pools in every unit allow an indoor-outdoor blend destined to make the most of the coastal Mediterranean lifestyle.

KITCHEN



LIVING AREA



DINING AREA

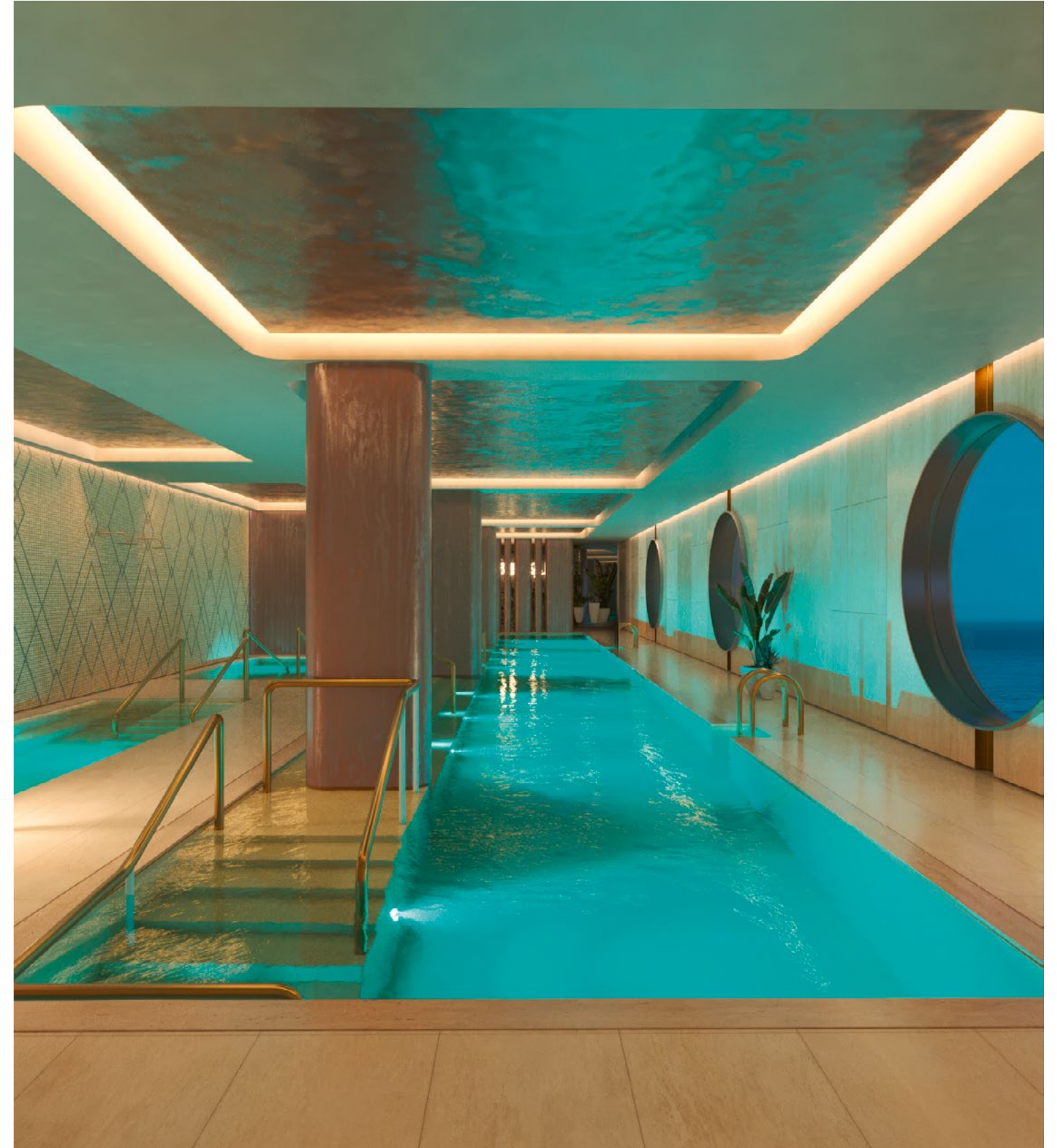


MASTER BEDROOM





Luxurious entrance lobby with guests welcome facilities and concierge service.



With our top of the line facilities: a heated Indoor Pool, Massage area, Hammam, Turkish bath, Sauna & GYM.

TH
SK
Pha

Duplex ground floor

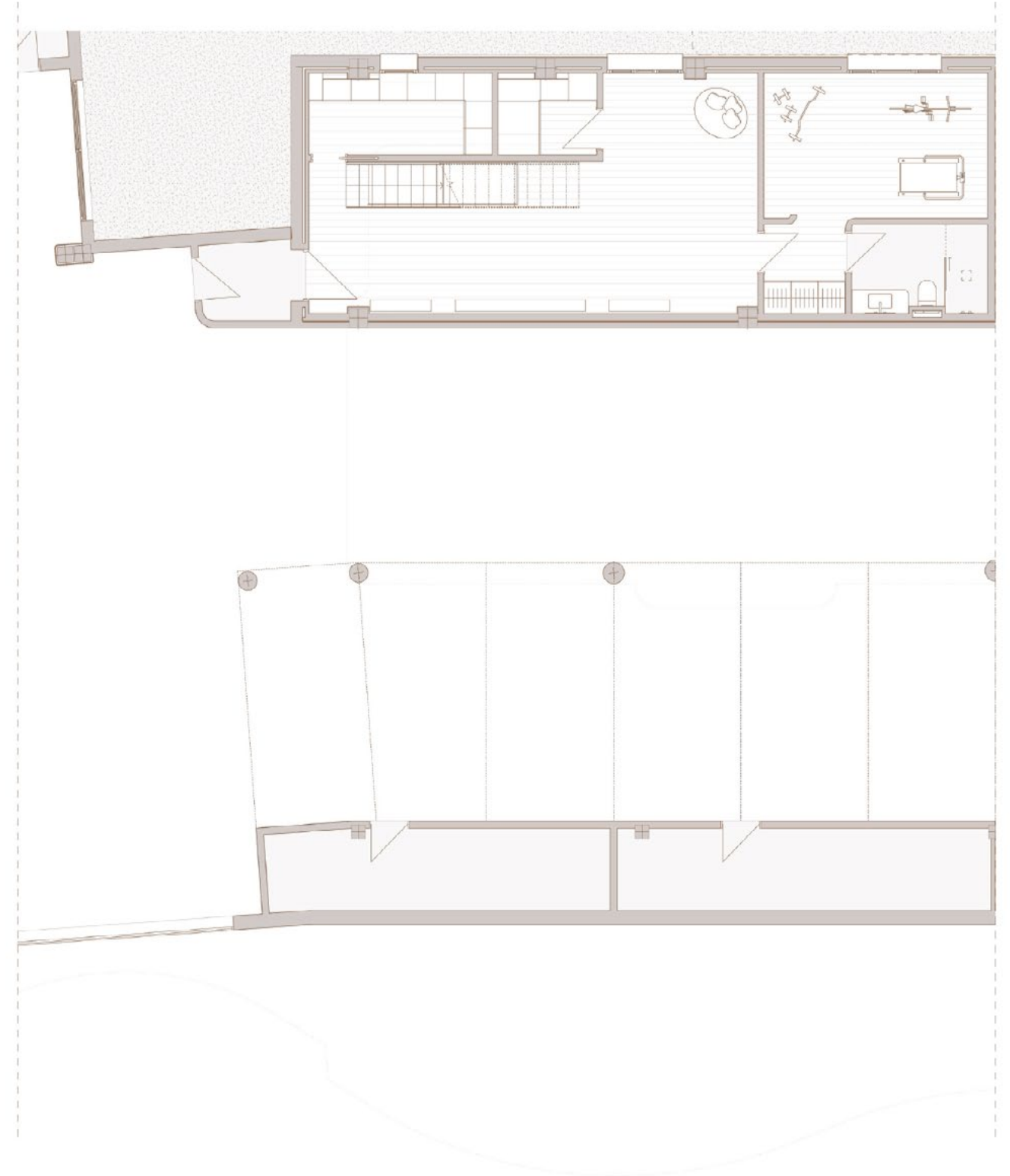
APARTMENT

216.02 m ²	Total enclosed built
201.78 m ²	Terraces & Porches
417.80 m ²	Total built area
6 × 2.6 m ²	Private pool
43.12 m ²	Garden
3	Bedrooms
3,5	Bathrooms
2	Indoor parking
1	Storage

DUPLEX GROUND FLOOR
Main Level



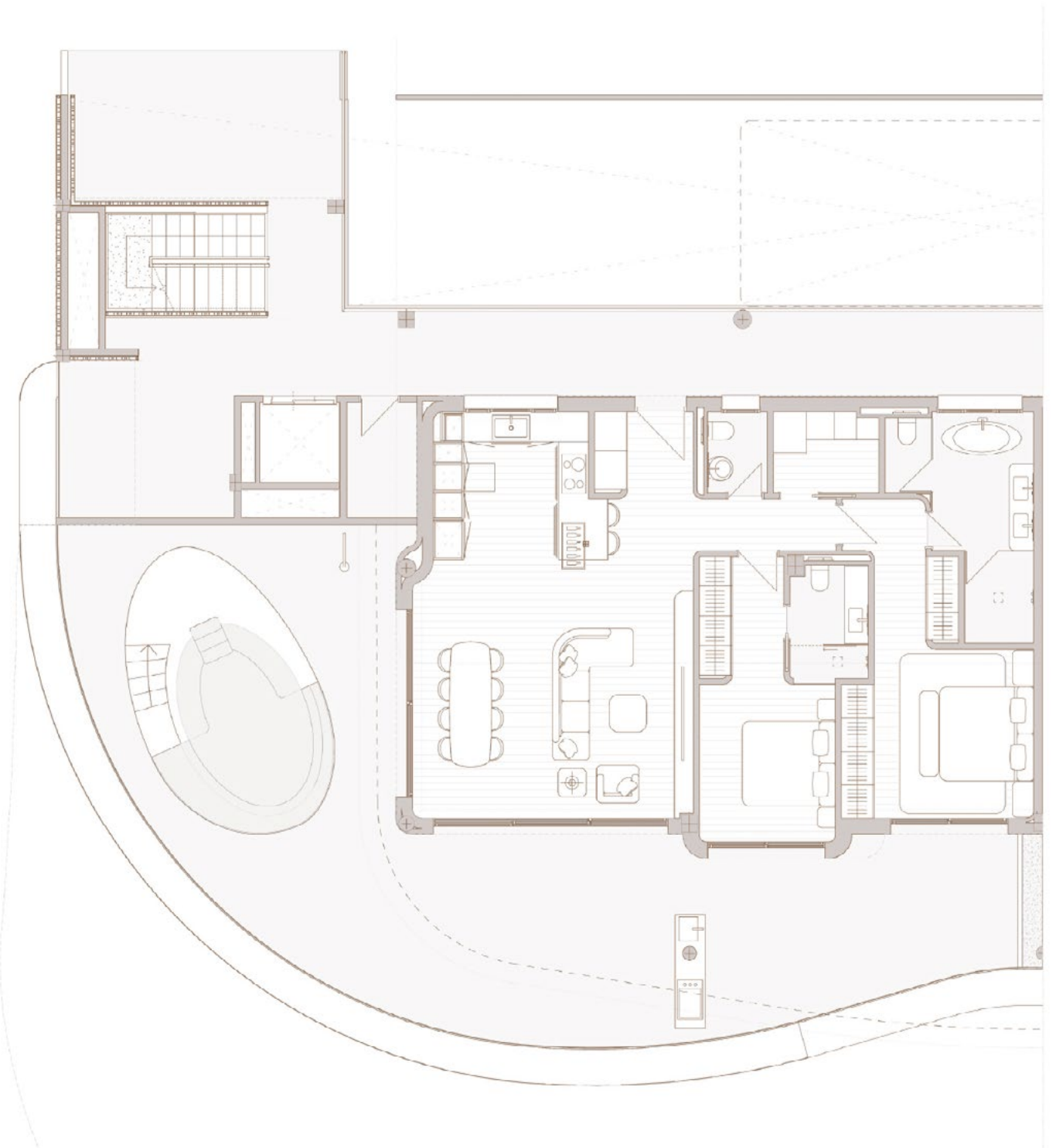
DUPLEX GROUND FLOOR
Lower Level



Middle floor

APARTMENT

129.22 m ²	Total enclosed built
110.60 m ²	Terraces & Porches
239.82 m ²	Total built area
4 x 2.6 m ²	Private pool
2	Bedrooms
2,5	Bathrooms
2	Indoor parking
1	Storage



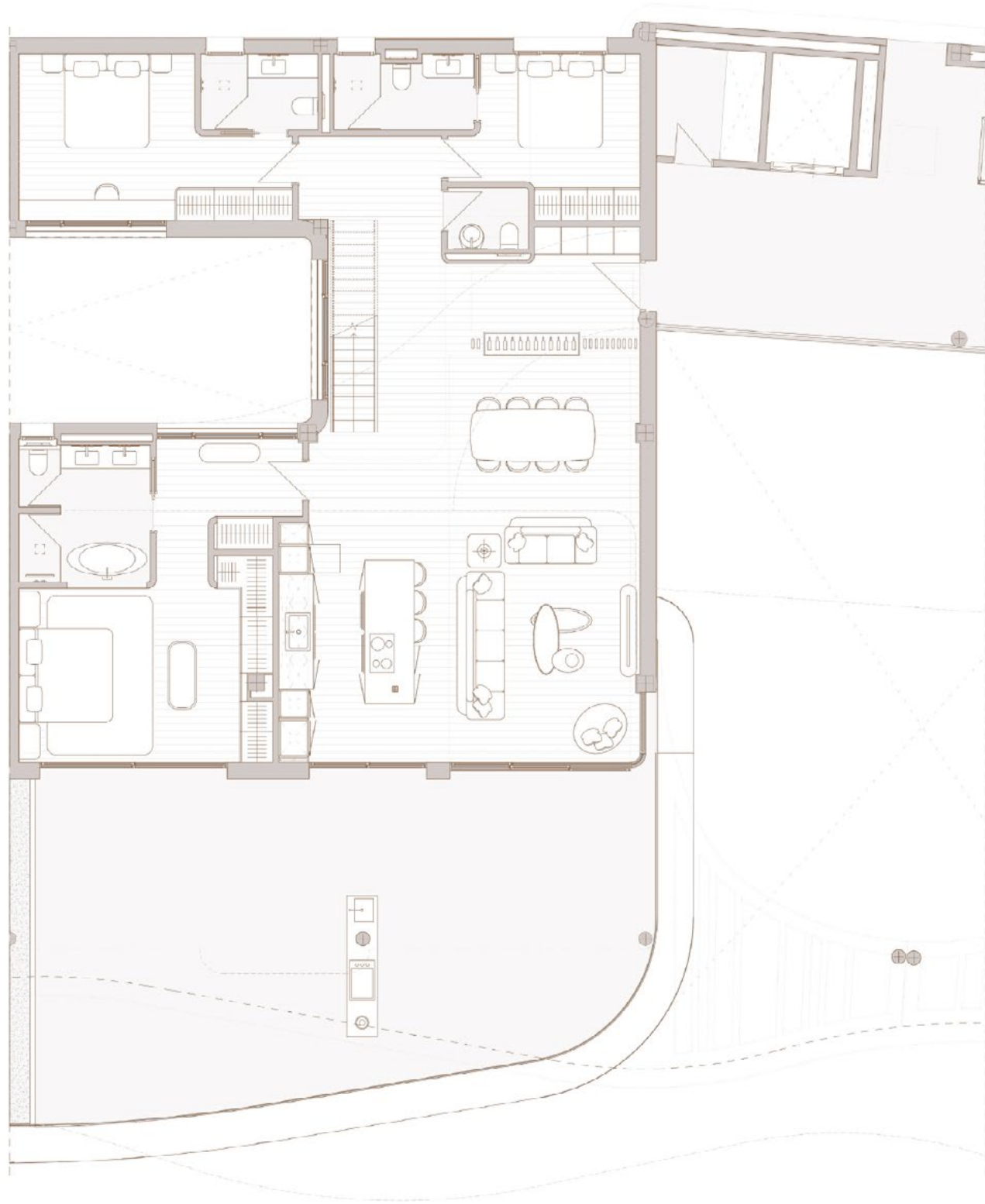
TH
SK
Ma

Duplex Penthouse

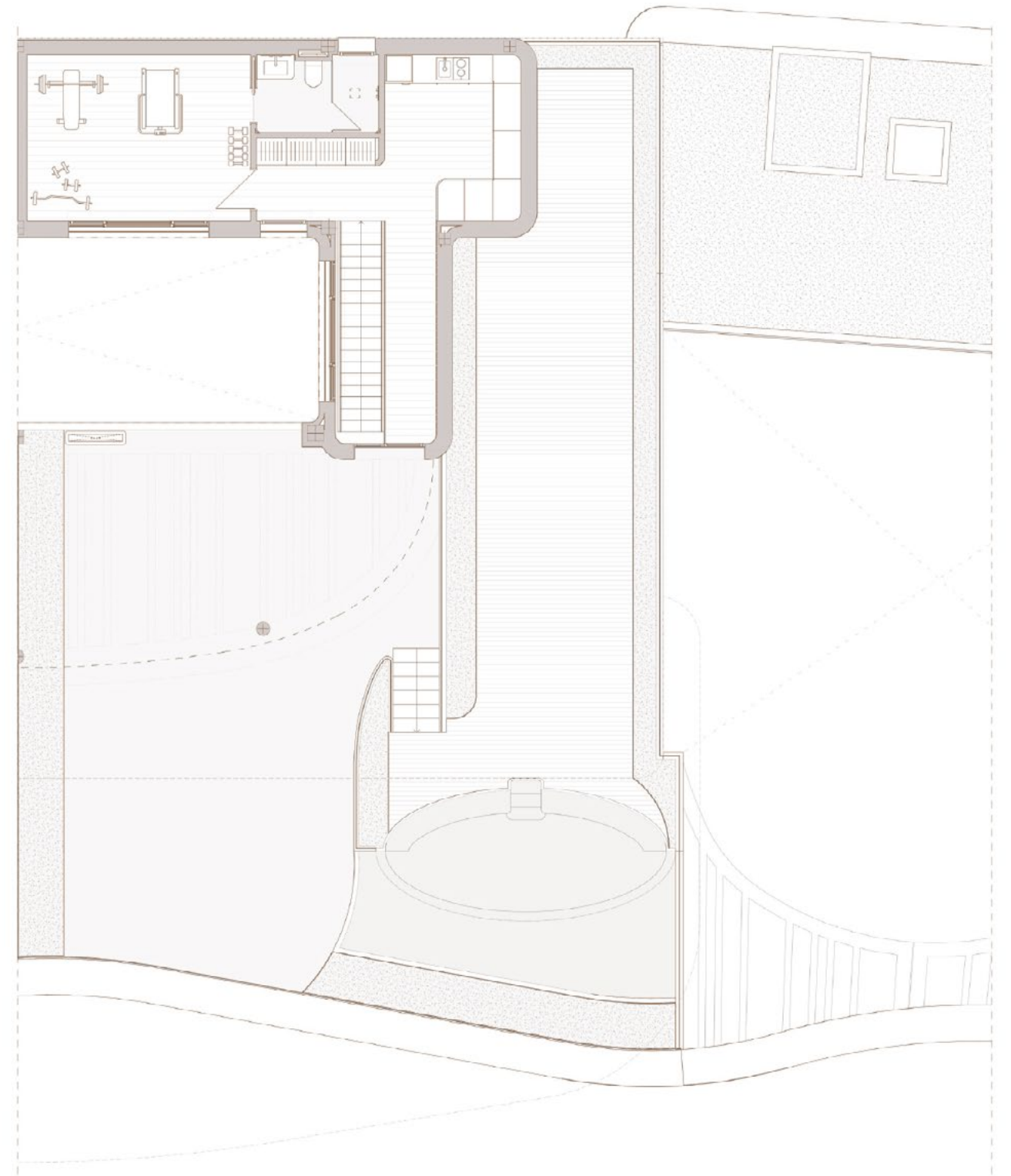
APARTMENT

248.11 m ²	Total enclosed built
300.28 m ²	Terraces & Porches
548.39 m ²	Total built area
6 × 2.6 m ²	Private pool
4	Bedrooms
4,5	Bathrooms
2	Indoor parking
1	Storage

DUPLEX PENTHOUSE
Main Level



DUPLEX PENTHOUSE
Upper Level

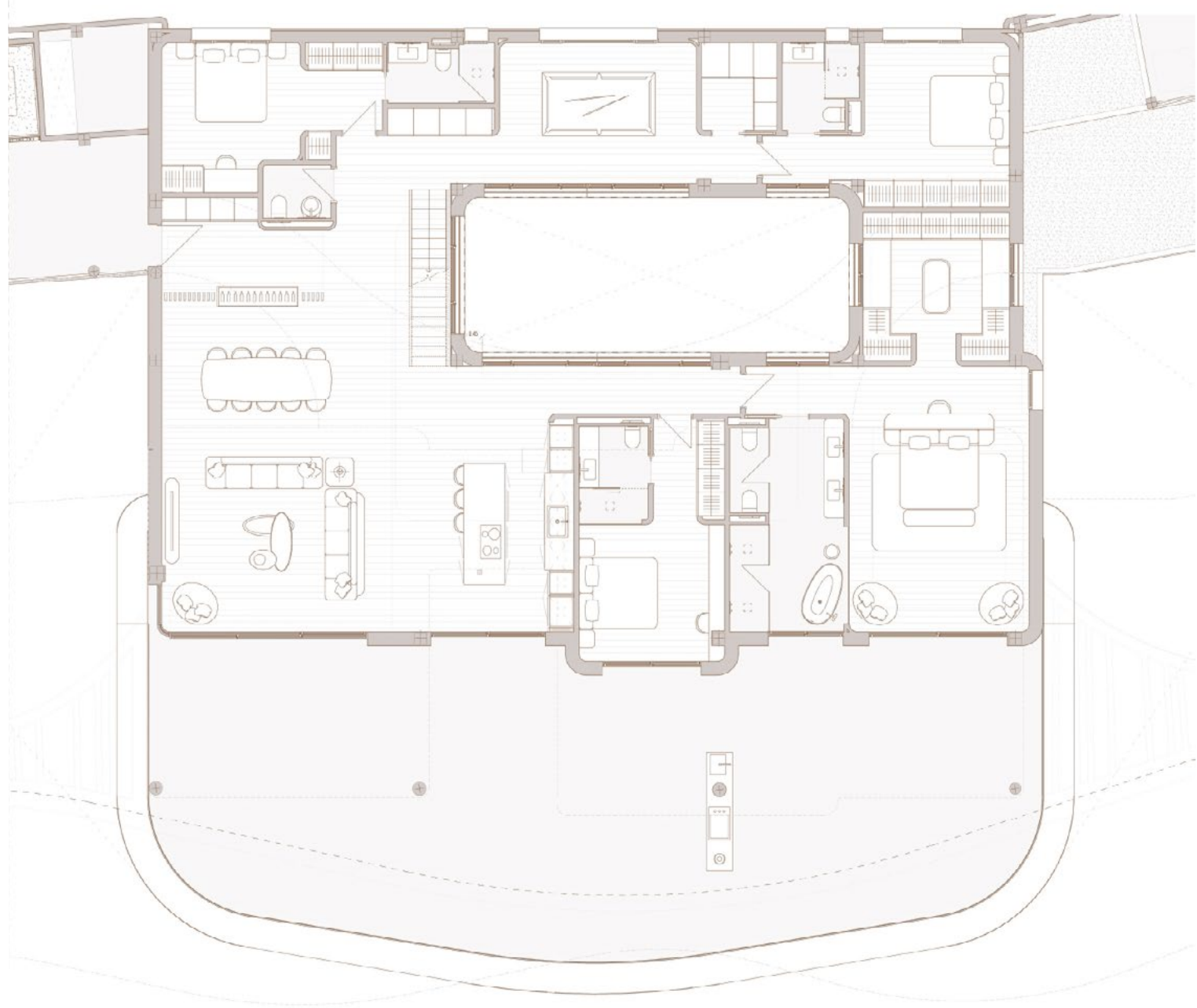


Sky Villa Penthouse

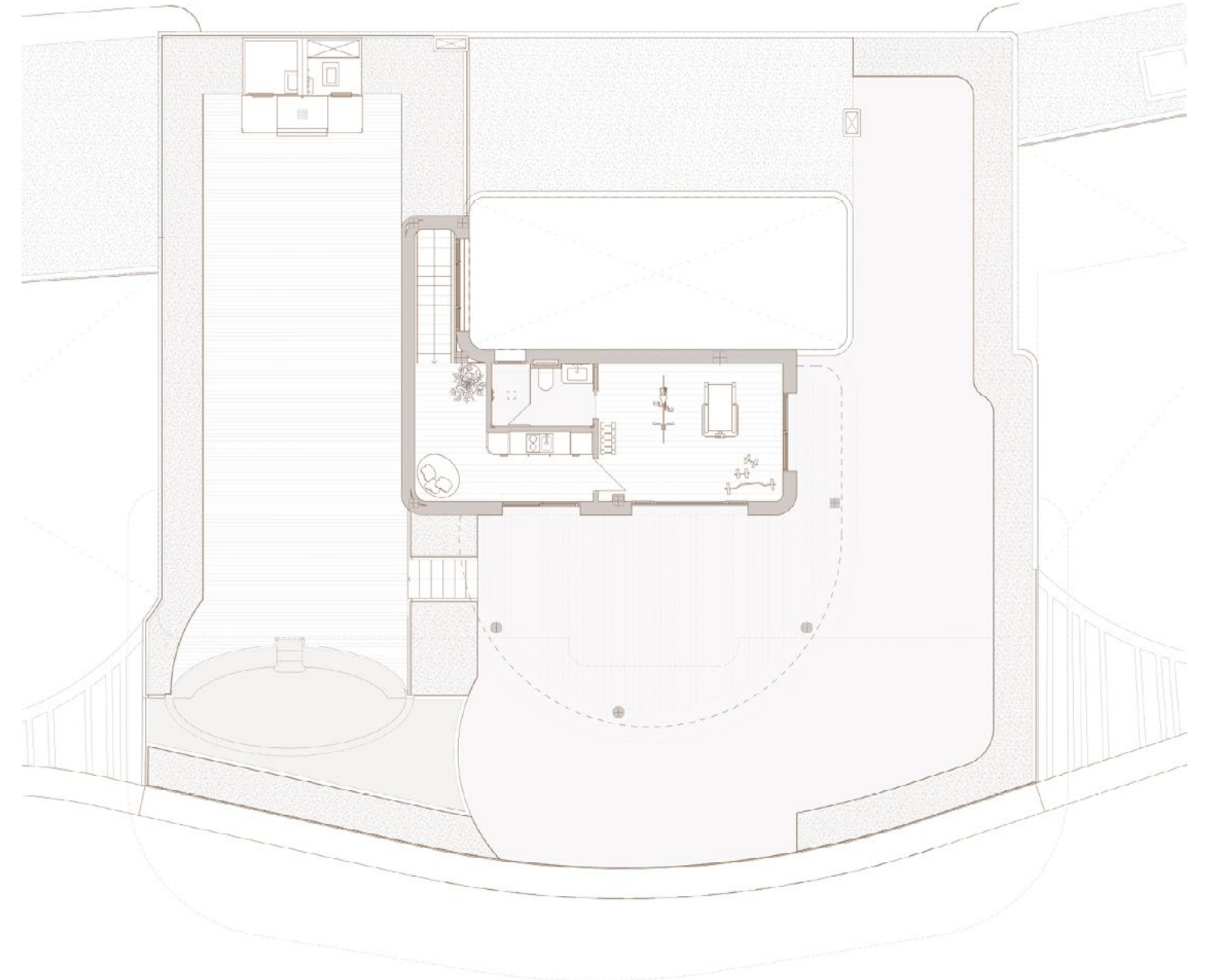
APARTMENT

402.05 m ²	Total enclosed built
594.22 m ²	Terraces & Porches
996.27 m ²	Total built area
6 × 2.6 m ²	Private pool
5	Bedrooms
5,5	Bathrooms
2	Indoor parking
1	Storage

SKY VILLA PENTHOUSE
Main Level



SKY VILLA PENTHOUSE
Upper Level





The Qualities

VILLAS & APARTMENTS

Top of the line finishes by Gunni & Trentino

Schuco double glazing carpentry

Underfloor heating & air conditioning

Kitchens with high end Poliform,
premium metallic finishes

Wardrobes by Poliform

Gaggenau & Bora appliances

Dornbracht taps, platinum finish

Oak wooden flooring, chevron format -
on the first floor of all villas

Big format ceramic flooring -
on the groundfloor level of all villas

Oak wooden flooring, chevron format -
all over the apartments

Private pool in each apartment

Two parking spaces and a storage room
for every unit - apartment
