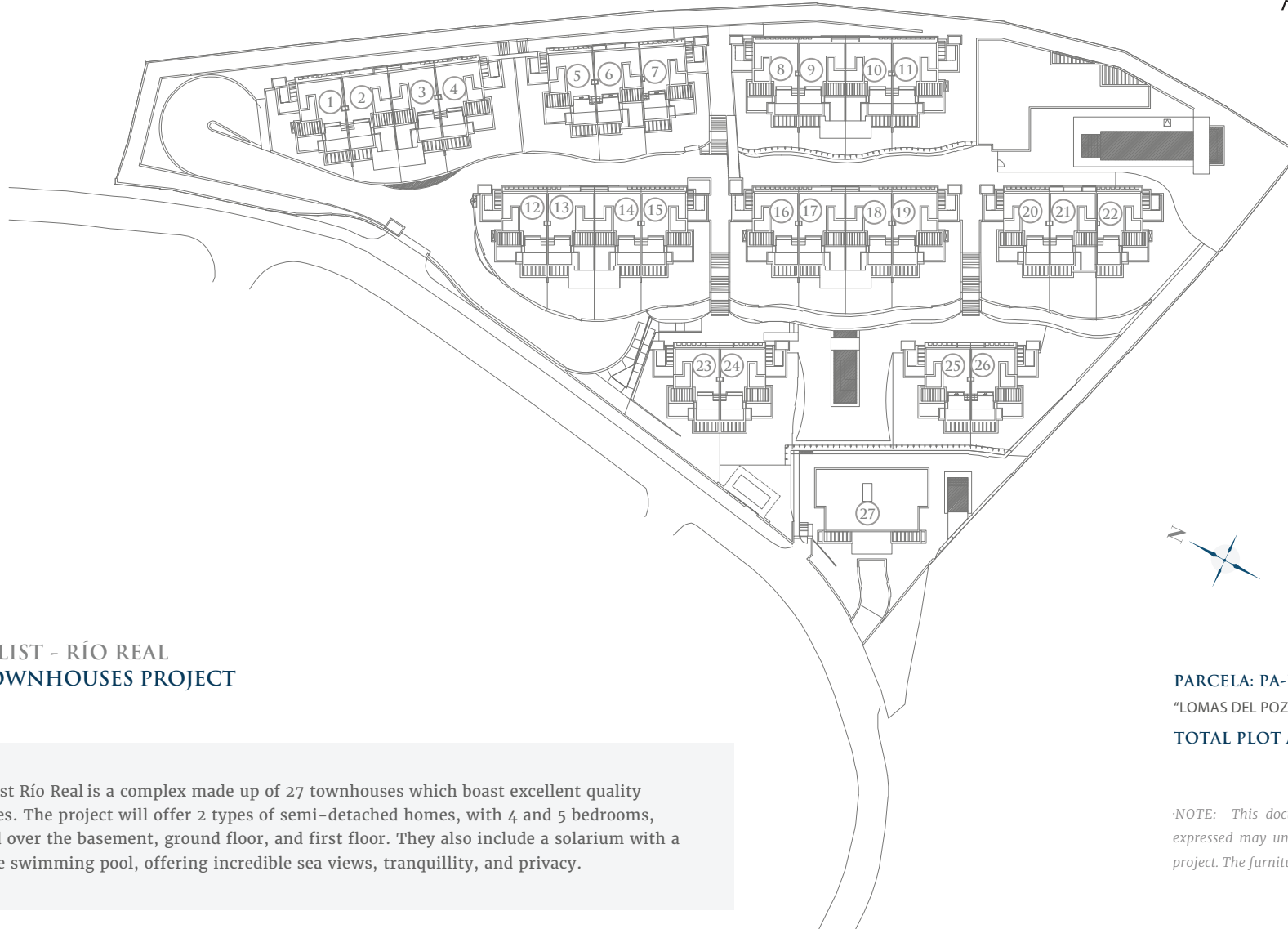


- RÍO REAL -

AssetFolio™

excl.



THE LIST - RÍO REAL
27 TOWNHOUSES PROJECT

The List Río Real is a complex made up of 27 townhouses which boast excellent quality finishes. The project will offer 2 types of semi-detached homes, with 4 and 5 bedrooms, spread over the basement, ground floor, and first floor. They also include a solarium with a private swimming pool, offering incredible sea views, tranquillity, and privacy.

PARCELA: PA-RR-9.

"LOMAS DEL POZUELO". MARBELLA

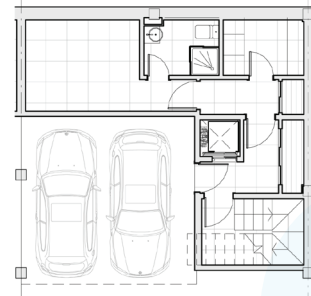
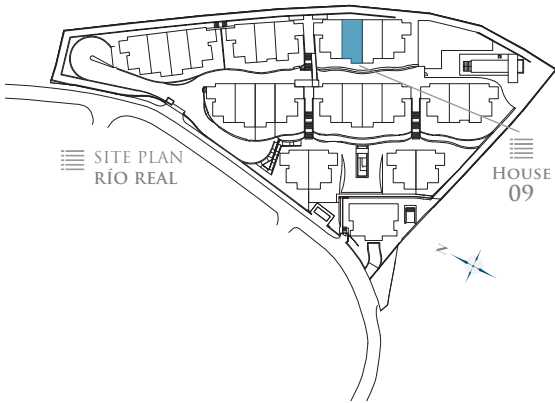
TOTAL PLOT AREA: 11.973,45 M²

·NOTE: This document is informative. The floor plans and areas expressed may undergo variations due to technical demands of the project. The furniture shown is not included being merely illustrative.

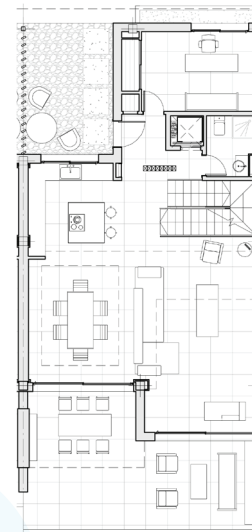


9
FLOOR PLAN

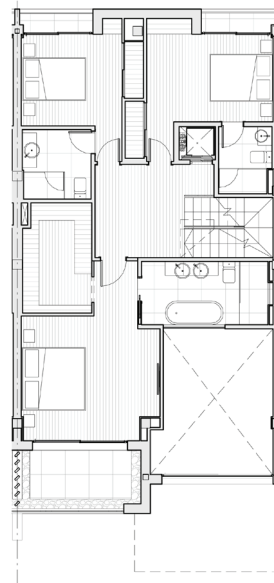
FLOORS
- HOUSE NINE -



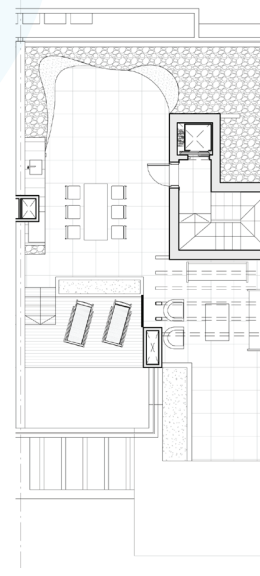
- BASEMENT -



- GROUND FLOOR -



- FIRST FLOOR -



- ROOF FLOOR -



AssetFolio™ | **excl.**

TOTAL USEFUL AREA:
227,95 m²

TOTAL USEFUL AREA
ACCORDING TO RD 218/2005:
250,75 m²

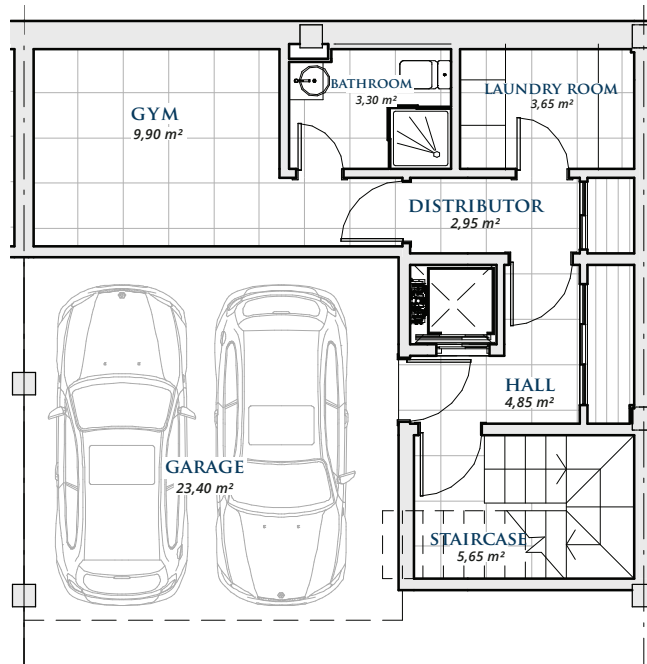
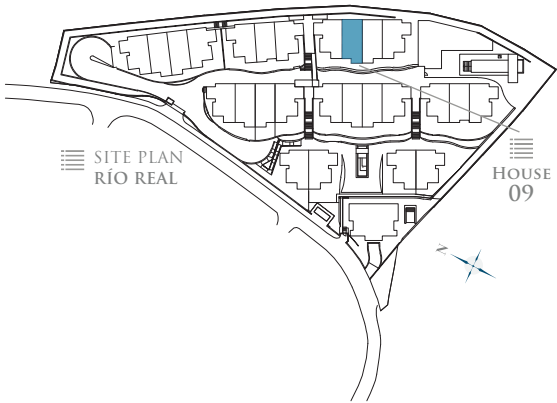
BUILT AREA

LIVING AREA	210,25 m ²
TERRACES	144,95 m ²
BASEMENT	63,32 m ²
PRIVATE GARDEN	7,53 m ²
TOTAL BUILT AREA:	418,52 m²



9
FLOOR PLAN

BASEMENT
- HOUSE NINE -



BASEMENT

BASEMENT	39,67 m ²
GARAGE	23,65 m ²
TOTAL BUILT AREA:	63,32 m²

* Basements are subject to modifications due to installation requirements.

GRAPHIC SCALE 1:100



THE LIST

SINGULAR HOMES

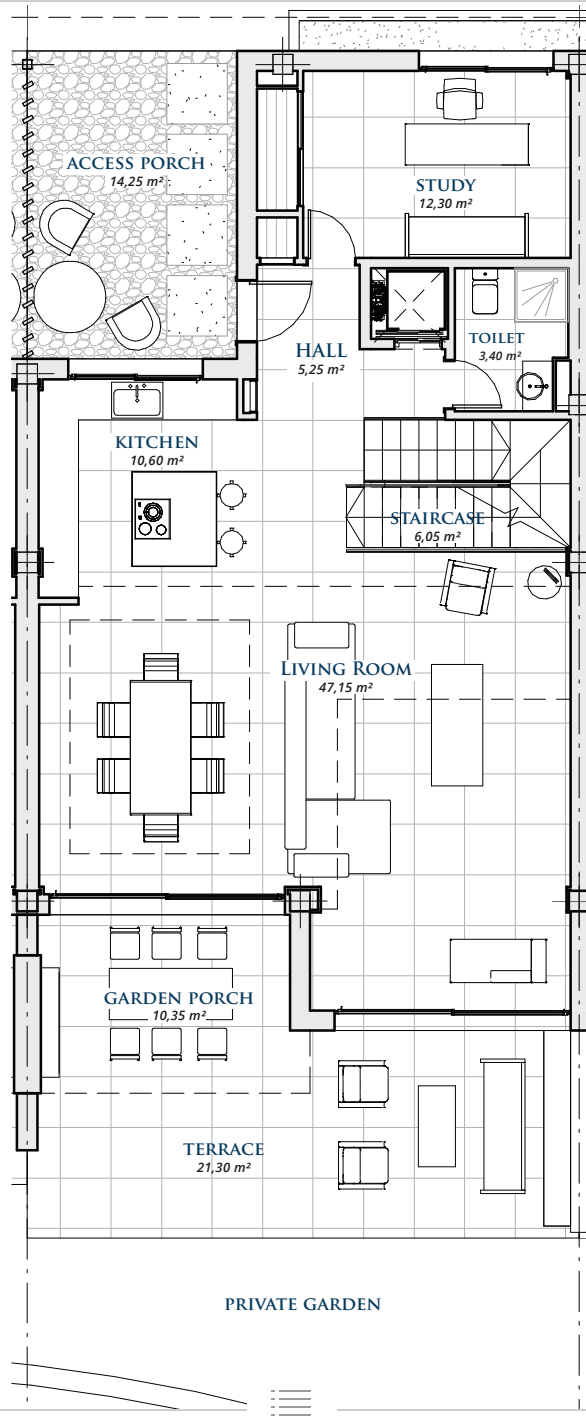
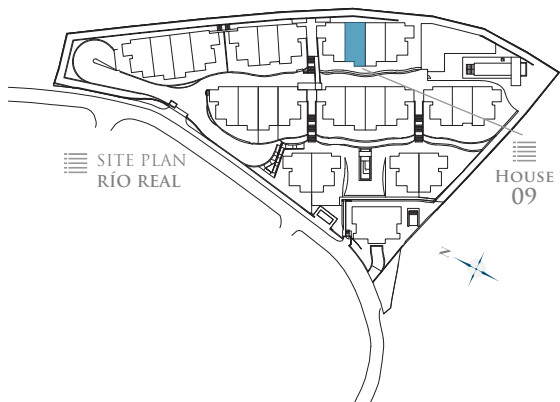
- RÍO REAL -

9

FLOOR PLAN

GROUND FLOOR

- HOUSE NINE -



AssetFolio™ | **excl.**

GROUND FLOOR

LIVING AREA	98,25 m ²
TERRACE	38,40 m ²
TOTAL BUILT AREA:	136,65 m ²

GRAPHIC SCALE 1:100

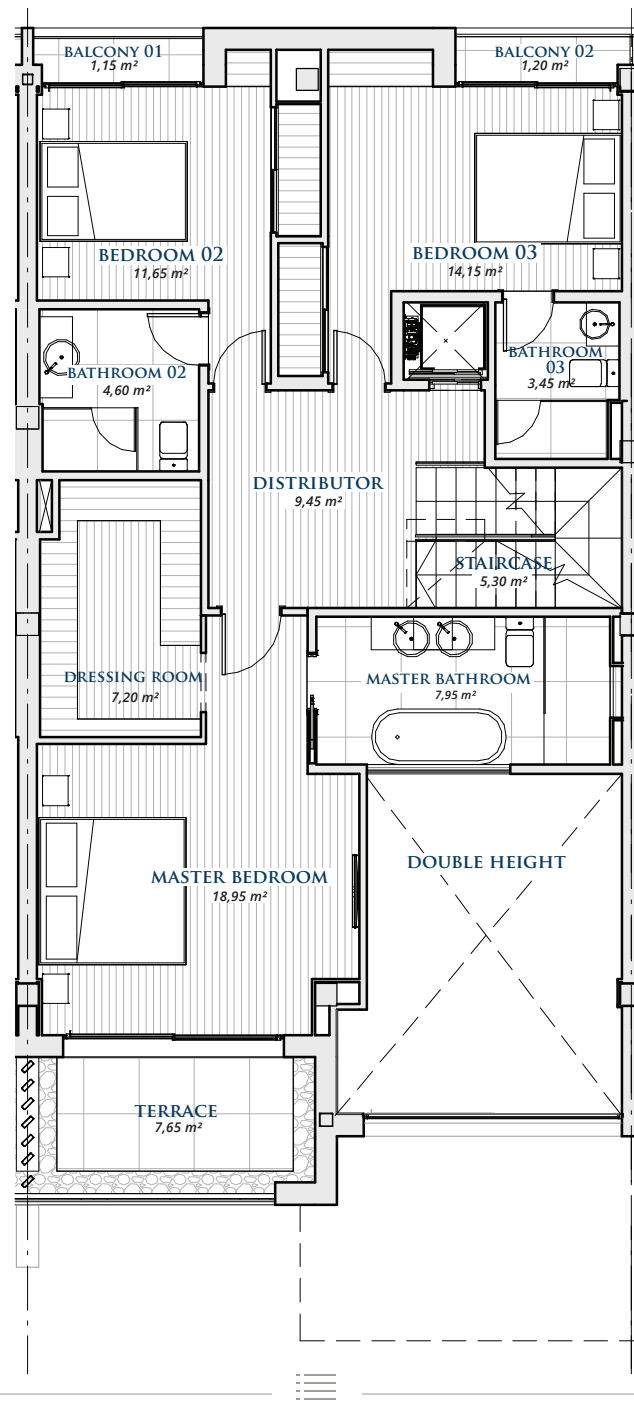
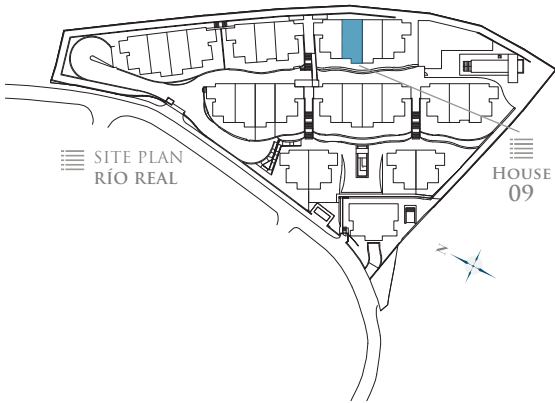


9

FLOOR PLAN

FIRST FLOOR

- HOUSE NINE -



FIRST FLOOR

LIVING AREA	100,00 m ²
TERRACE	10,5 m ²
TOTAL BUILT AREA:	110,50 m ²

GRAPHIC SCALE 1:100

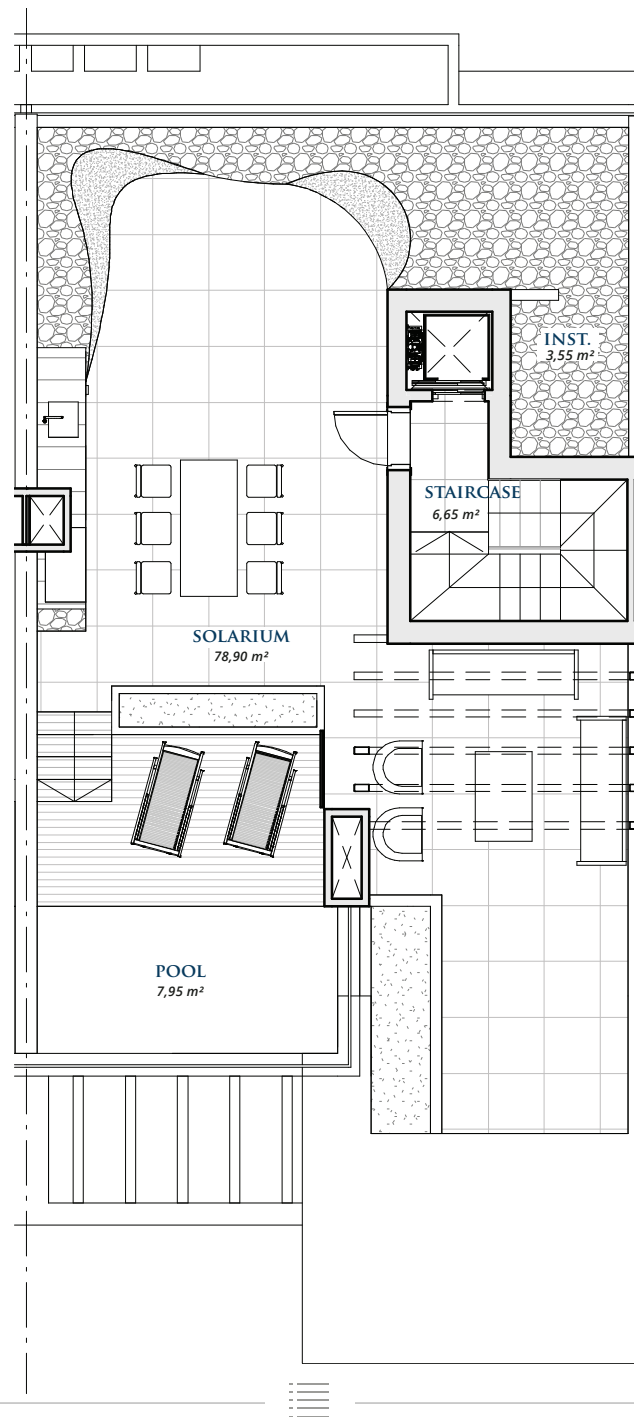
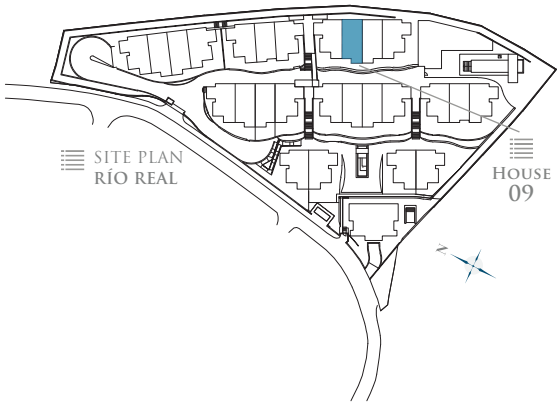


9

FLOOR PLAN

ROOF FLOOR

- HOUSE NINE -



ROOF FLOOR

CLOSED AREA	12,00 m ²
TERRACE	96,05 m ²
TOTAL BUILT AREA:	108,05 m ²

GRAPHIC SCALE 1:100

