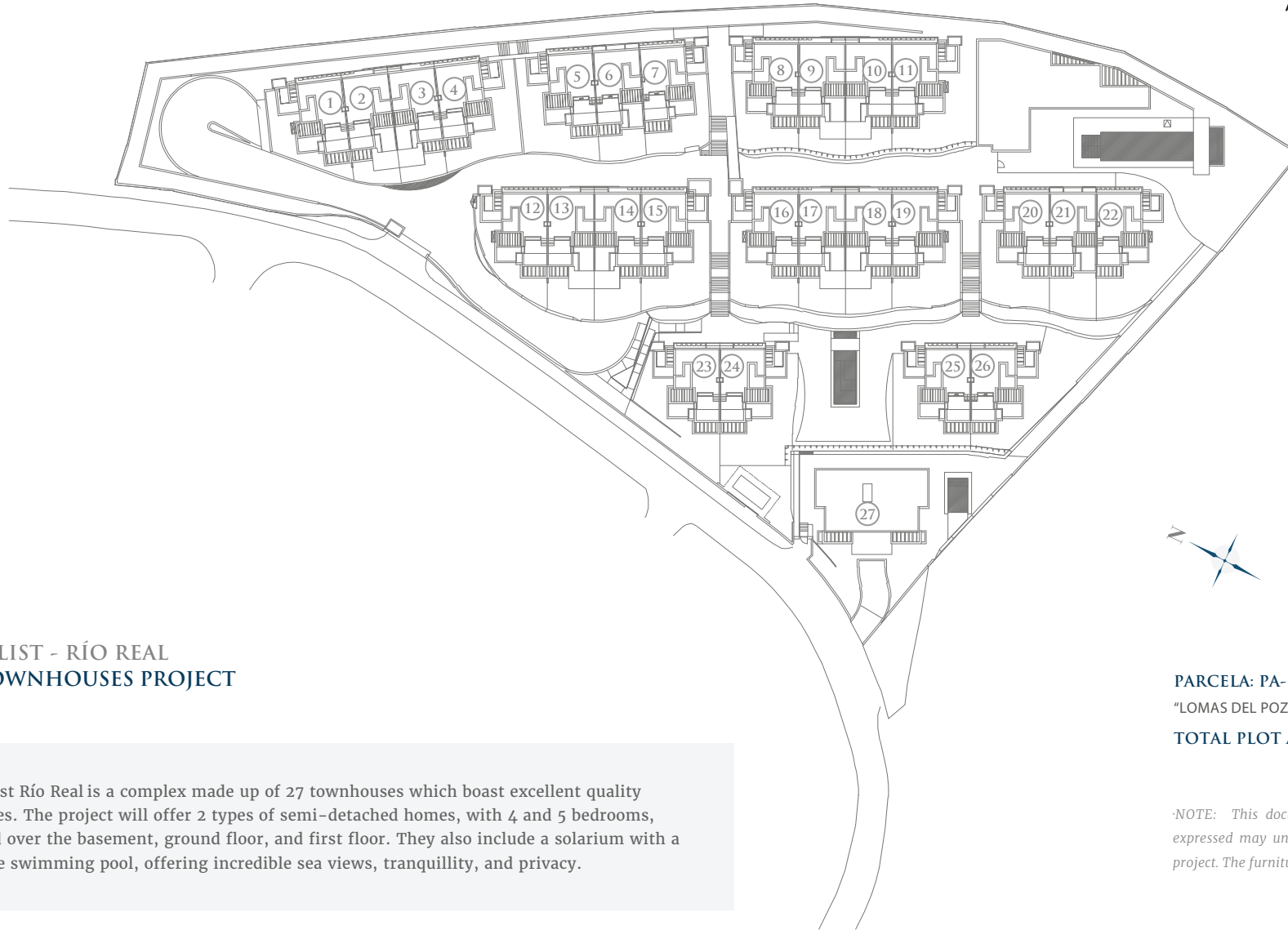


- RÍO REAL -

AssetFolio™

excl.



THE LIST - RÍO REAL
27 TOWNHOUSES PROJECT

The List Río Real is a complex made up of 27 townhouses which boast excellent quality finishes. The project will offer 2 types of semi-detached homes, with 4 and 5 bedrooms, spread over the basement, ground floor, and first floor. They also include a solarium with a private swimming pool, offering incredible sea views, tranquillity, and privacy.

PARCELA: PA-RR-9.

"LOMAS DEL POZUELO". MARBELLA

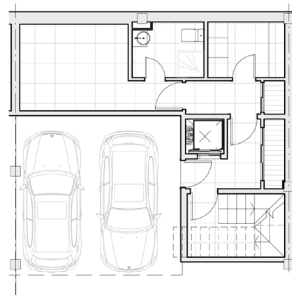
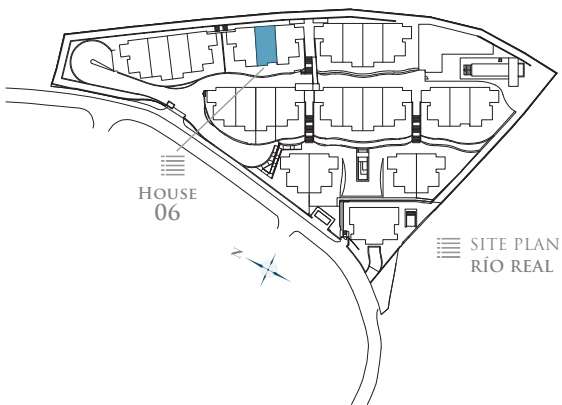
TOTAL PLOT AREA: 11.973,45 M²

NOTE: This document is informative. The floor plans and areas expressed may undergo variations due to technical demands of the project. The furniture shown is not included being merely illustrative.

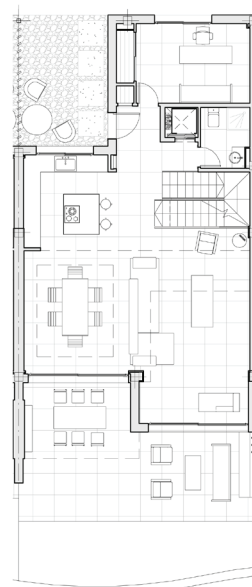


6
FLOOR PLAN

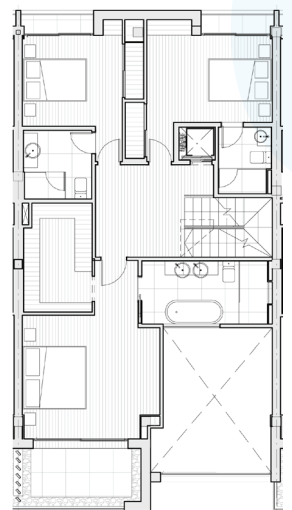
FLOORS
- HOUSE SIX -



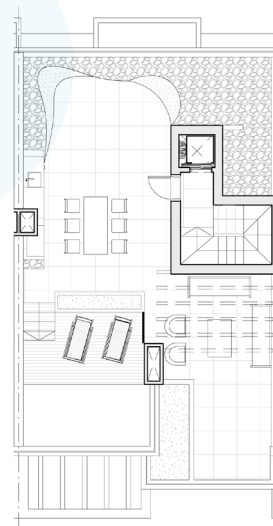
- BASEMENT -



- GROUND FLOOR -



- FIRST FLOOR



- ROOF FLOOR -

TOTAL USEFUL AREA:
228,15 m²

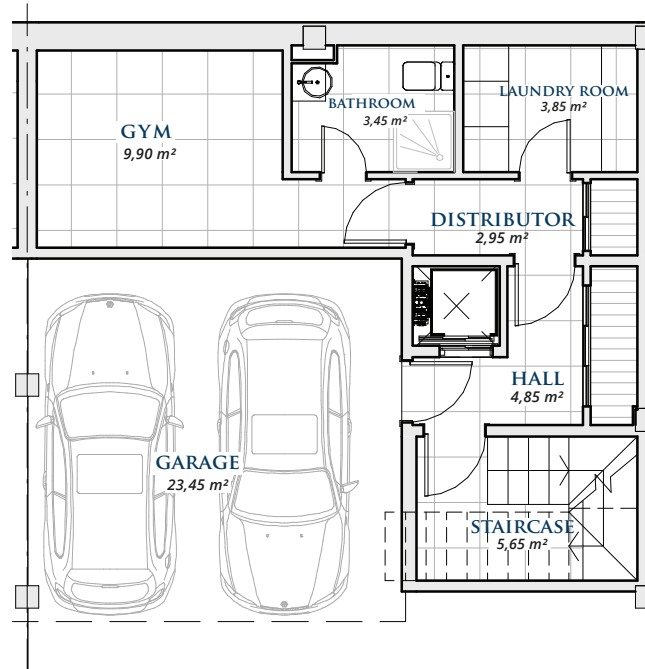
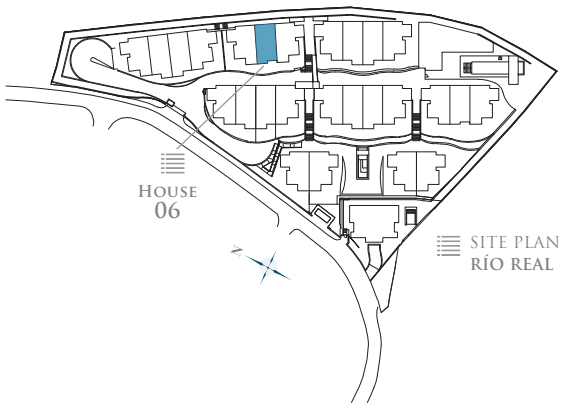
TOTAL USEFUL AREA
ACCORDING TO RD 218/2005:
250,97 m²

BUILT AREA

LIVING AREA	210,25 m ²
TERRACES	156,58 m ²
BASEMENT	63,32 m ²
PRIVATE GARDEN	14,56 m ²
TOTAL BUILT AREA:	430,15 m²

6
FLOOR PLAN

BASEMENT
- HOUSE SIX -



BASEMENT

BASEMENT	39,67 m ²
GARAGE	23,65 m ²
TOTAL BUILT AREA:	63,32 m²

* Basements are subject to modifications due to installation requirements.

GRAPHIC SCALE 1:100



THE LIST

SINGULAR HOMES

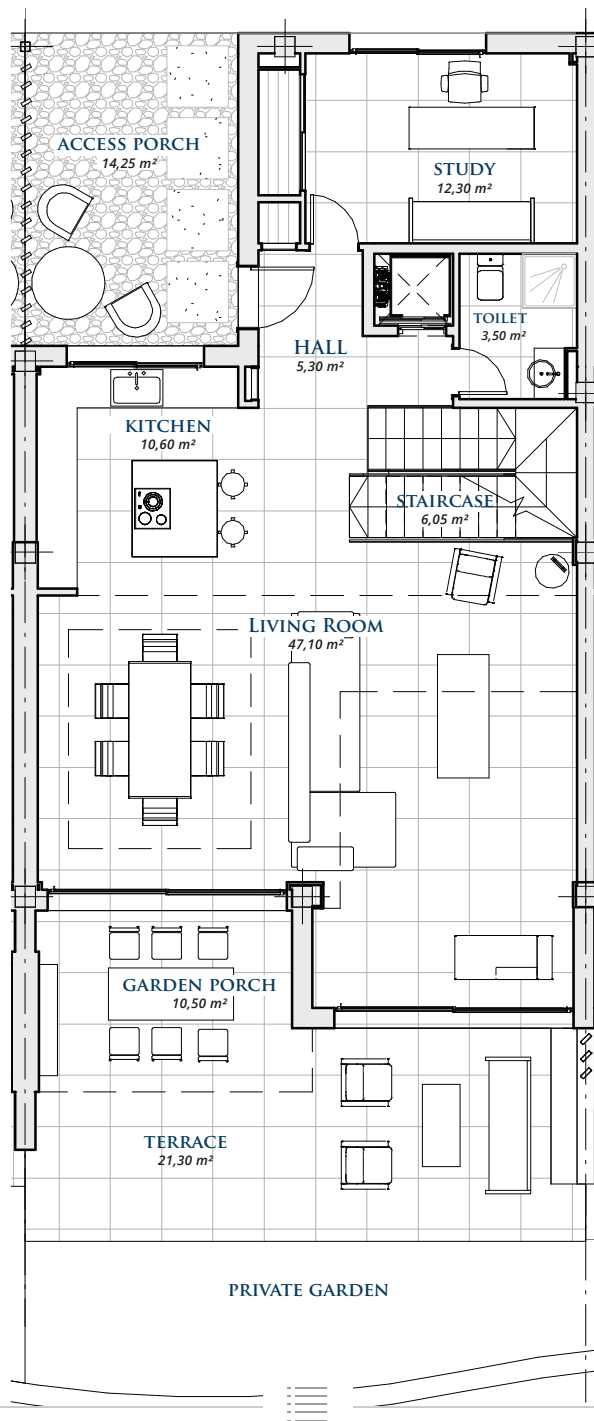
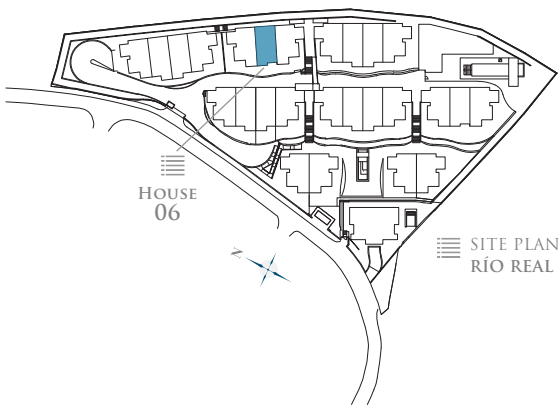
- RÍO REAL -

6

FLOOR PLAN

GROUND FLOOR

- HOUSE SIX -



AssetFolio™ | **excl.**

GROUND FLOOR

LIVING AREA 98,25 m²

TERRACE 50,03 m²

TOTAL BUILT AREA: 148,28 m²

GRAPHIC SCALE 1:100

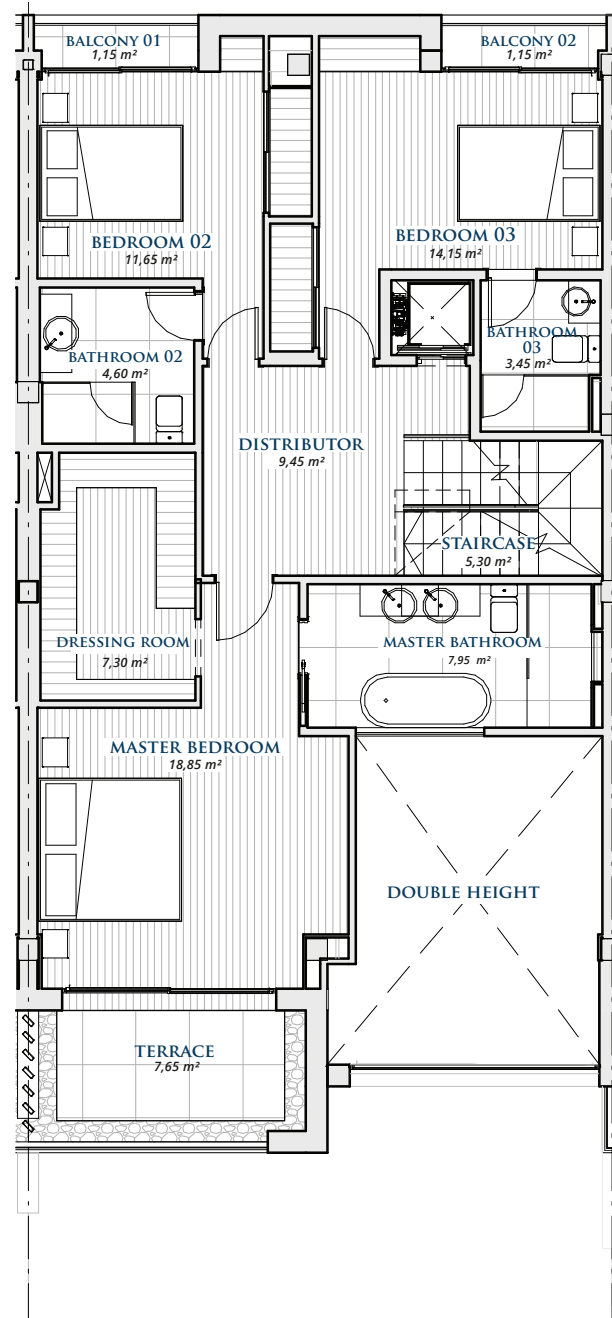
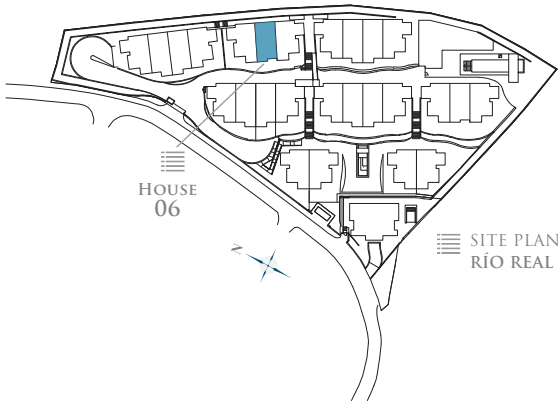


6

FLOOR PLAN

FIRST FLOOR

- HOUSE SIX -



FIRST FLOOR

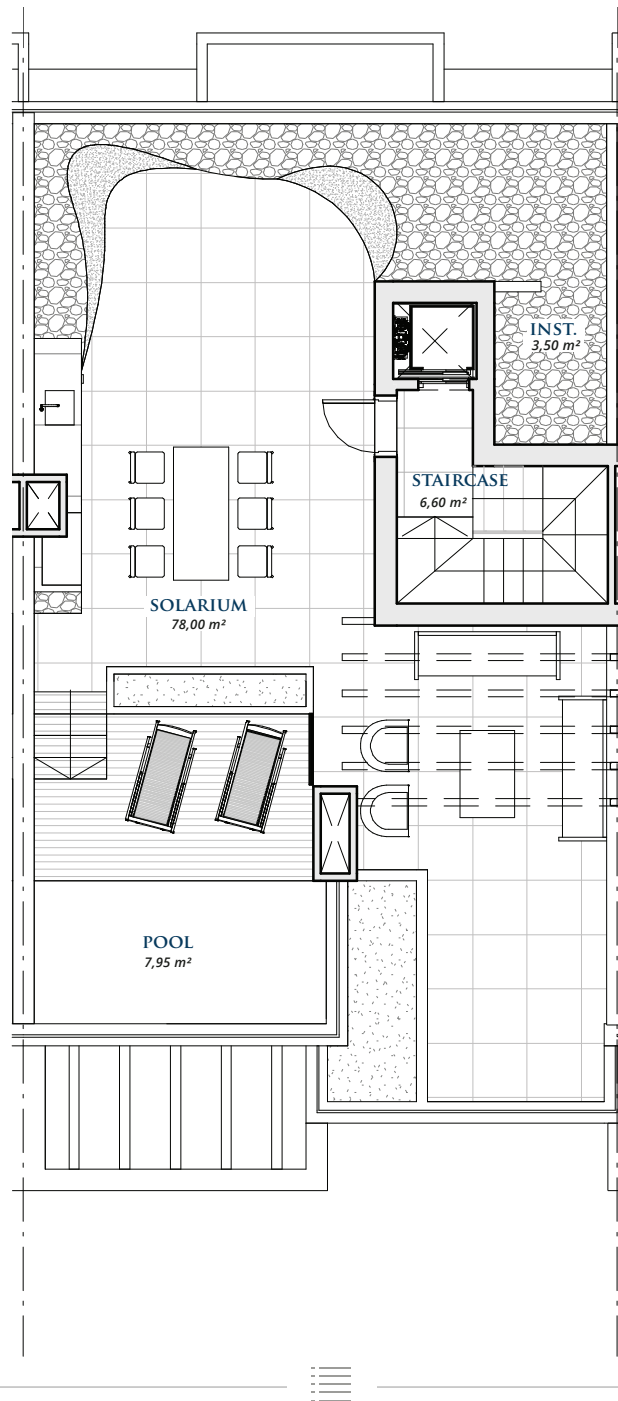
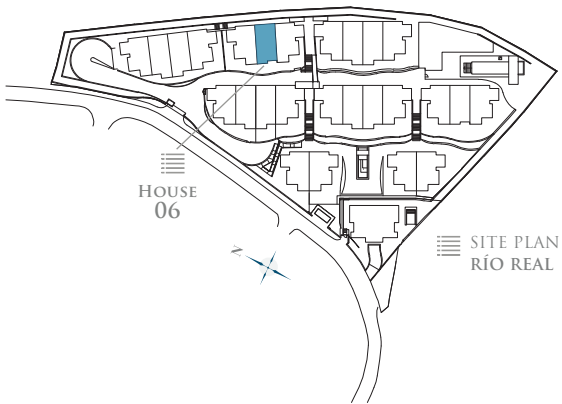
LIVING AREA	100,00 m ²
TERRACE	10,50 m ²
TOTAL BUILT AREA:	110,50 m²

GRAPHIC SCALE 1:100



6
FLOOR PLAN

ROOF FLOOR
- HOUSE SIX -



ROOF FLOOR

CLOSED AREA	12,00 m ²
TERRACE	96,05 m ²
TOTAL BUILT AREA:	108,05 m²

GRAPHIC SCALE 1:100

