

SEVEN
DIAMONDS

VILLAS BENALMADENA



The Villas.

Located in the prestigious La Capellanía area, this exclusive collection of seven luxurious villas offers unparalleled vistas of the mediterranean sea, majestic mountains, and the scenic landscapes of Mijas and Fuengirola.

A COLLECTION OF 7 LUXURY VILLAS



SEVEN
DIAMONDS
VILLAS BENALMADENA



we move the limits



Notice that all renders and materials are indicative and non contractual.



exploration

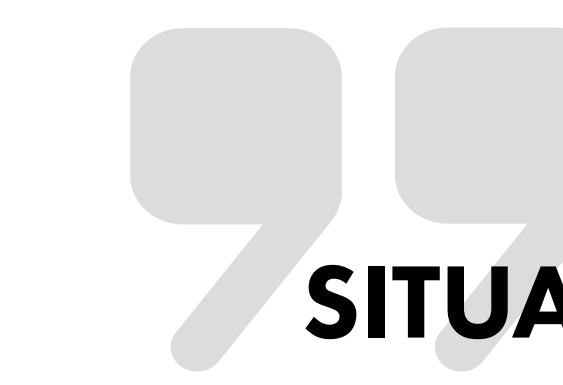


The Developer.

Green Estates is a renowned Danish developer with decades of experience in construction both in Denmark and in Spain.

The Concept.

Our vision is to bring the excellence of Danish craftsmanship, materials, and construction techniques to Spain. Our focus is on creating something truly extraordinary—homes that are not only visually stunning but also highly functional and sustainable, offering a perfect blend of beauty, quality, and eco-conscious design.



SITUATED ON THE STUNNING COSTA DEL SOL, LA CAPELLANIA IN BENALMADENA IS AN EXCLUSIVE RESIDENTIAL AREA KNOWN FOR ITS PEACEFUL AMBIANCE AND BREATHTAKING SEA VIEWS.

La Capellania is ideally located, just a 15-minute drive from Malaga Airport, providing easy access for both domestic and international travel. The vibrant town of Marbella, with its upscale shopping, dining, and entertainment options, is only 30 minutes away. Residents can enjoy the best of both worlds: the serenity of a private enclave and the convenience of nearby urban amenities.

LOCATION. LOCATION. LOCATION.

Phase I.

Our projects are characterised by cutting-edge design, prime locations, fantastic sea views and superior quality.

I
VILLA W14

II
VILLA W12

III
VILLA W10

III
VILLA W08



SIGNATURE

This unique villa consists of a spacious ground floor with an open-plan kitchen and living area that flows effortlessly into expansive terraces and a chill-out area by the curved infinity pool.

The upper floor features a master suite with a private gallery, along with two additional bedrooms each with en-suite bathrooms, providing ample space for family and guests.

The basement includes a spacious multi-room with a bar, home cinema, and two bedrooms with en-suite bathrooms, all accessible via a private elevator.

It comes with a covered parking space for 3 cars on the groundfloor level.



I
VILLA W14

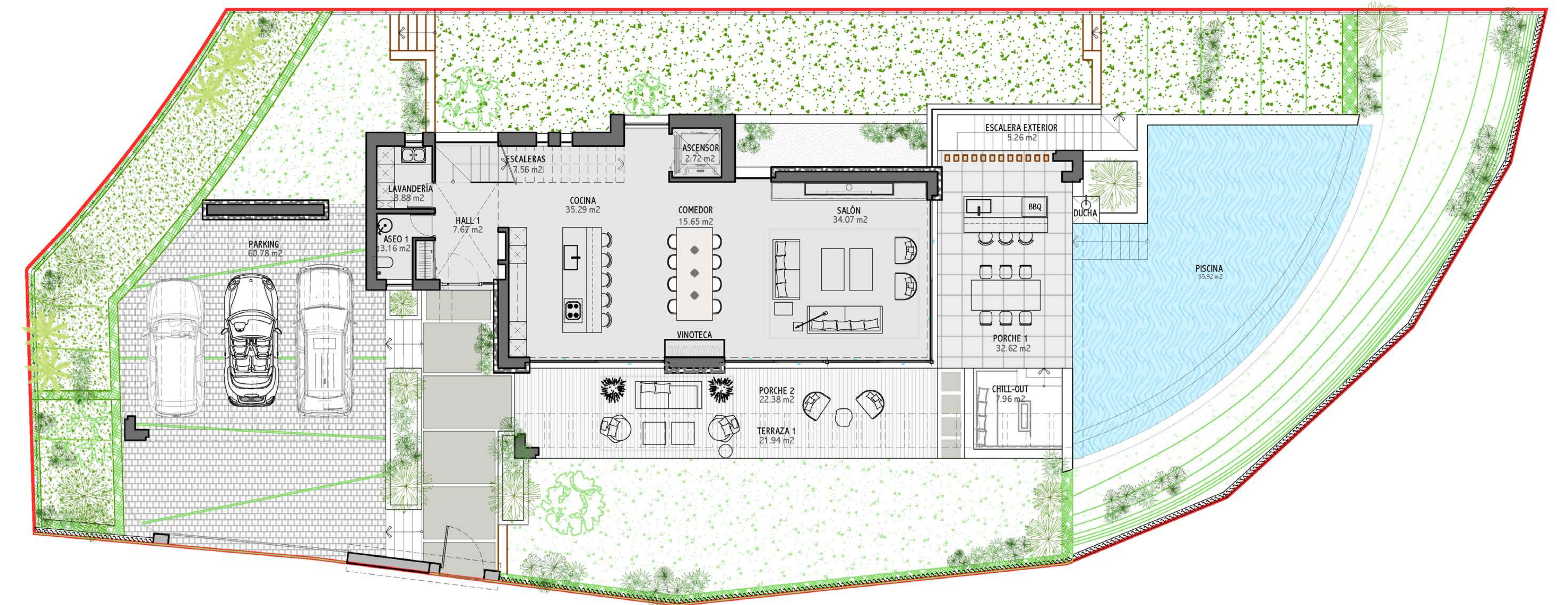
II
VILLA W12

III
VILLA W10

IIII
VILLA W08

GROUND FLOOR

- Total Built Area: 131.83 m²
- Usable Parking Area: 60.78 m²
- Usable Pool Area: 55.92 m²
- Usable Terrace 1 Area: 21.94 m²
- Usable Porch Areas 1 and 2: 55.00 m²
- Usable Chill-Out Area: 7.96 m²



I
VILLA W14

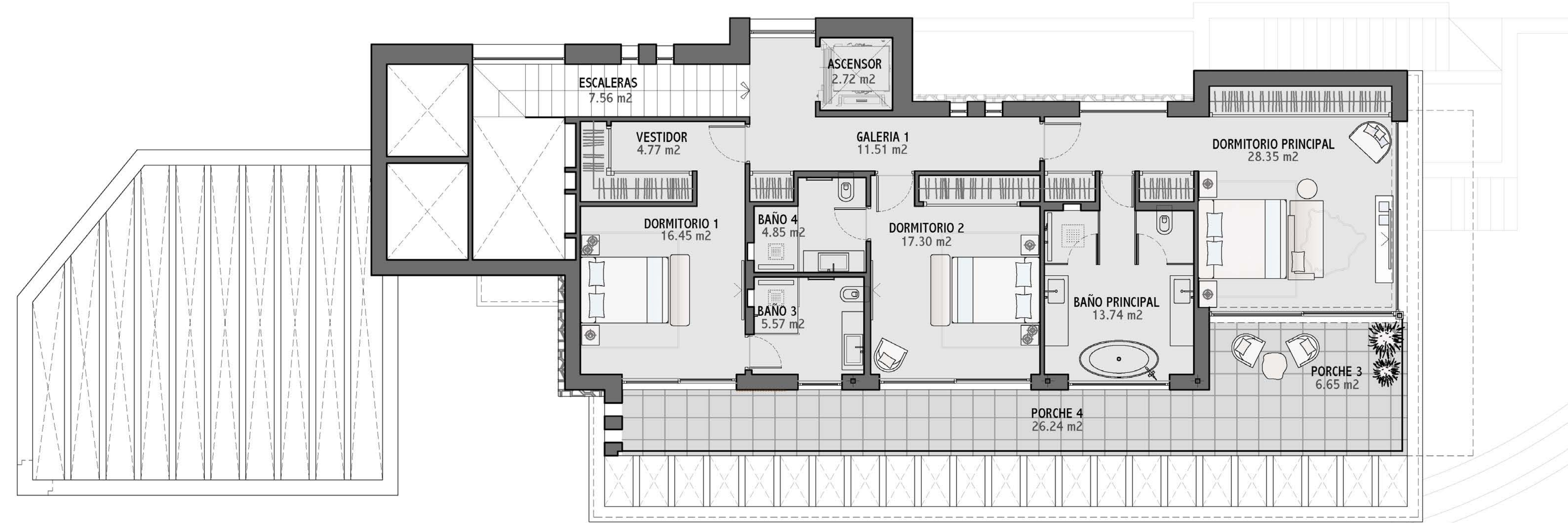
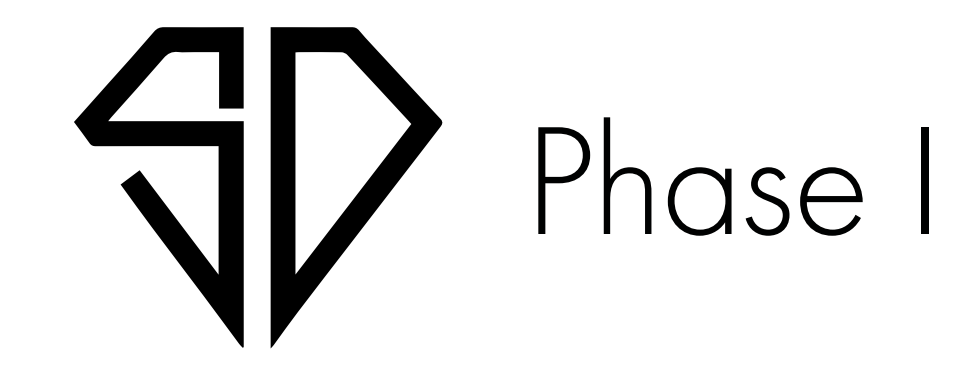
II
VILLA W12

III
VILLA W10

IIII
VILLA W08

FIRST FLOOR

Total Built Area: 134.75 m²
Usable Porch Areas 3 and 4: 32.89 m²



I
VILLA W14

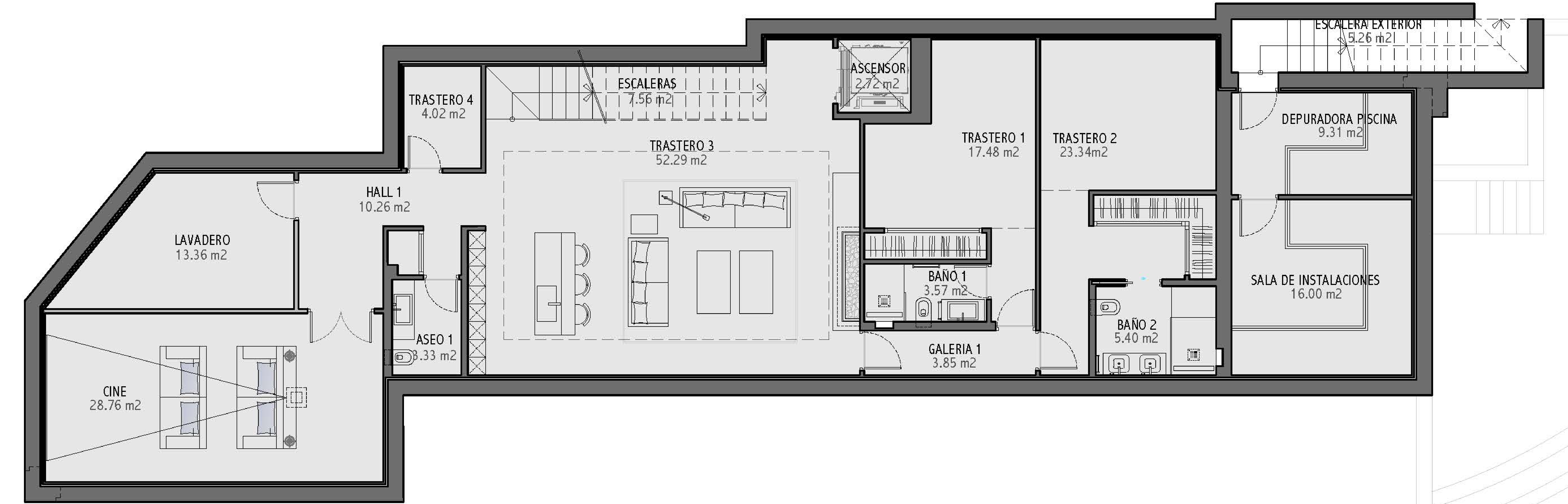
II
VILLA W12

III
VILLA W10

IIII
VILLA W08

BASEMENT

Total Built Area: 248.44 m²



I
VILLA W14

II
VILLA W12

III
VILLA W10

IIII
VILLA W08

DIAMOND

The ground floor includes a spacious living room and a state-of-the-art kitchen that opens to large terraces and a chill-out area by the infinity pool.

The first floor features a luxurious master suite with a private terrace and three additional bedrooms, each with en-suite bathrooms.

The basement includes a sizable garage, a "man-cave", and additional storage spaces, ensuring practicality without compromising on style.



I
VILLA W14

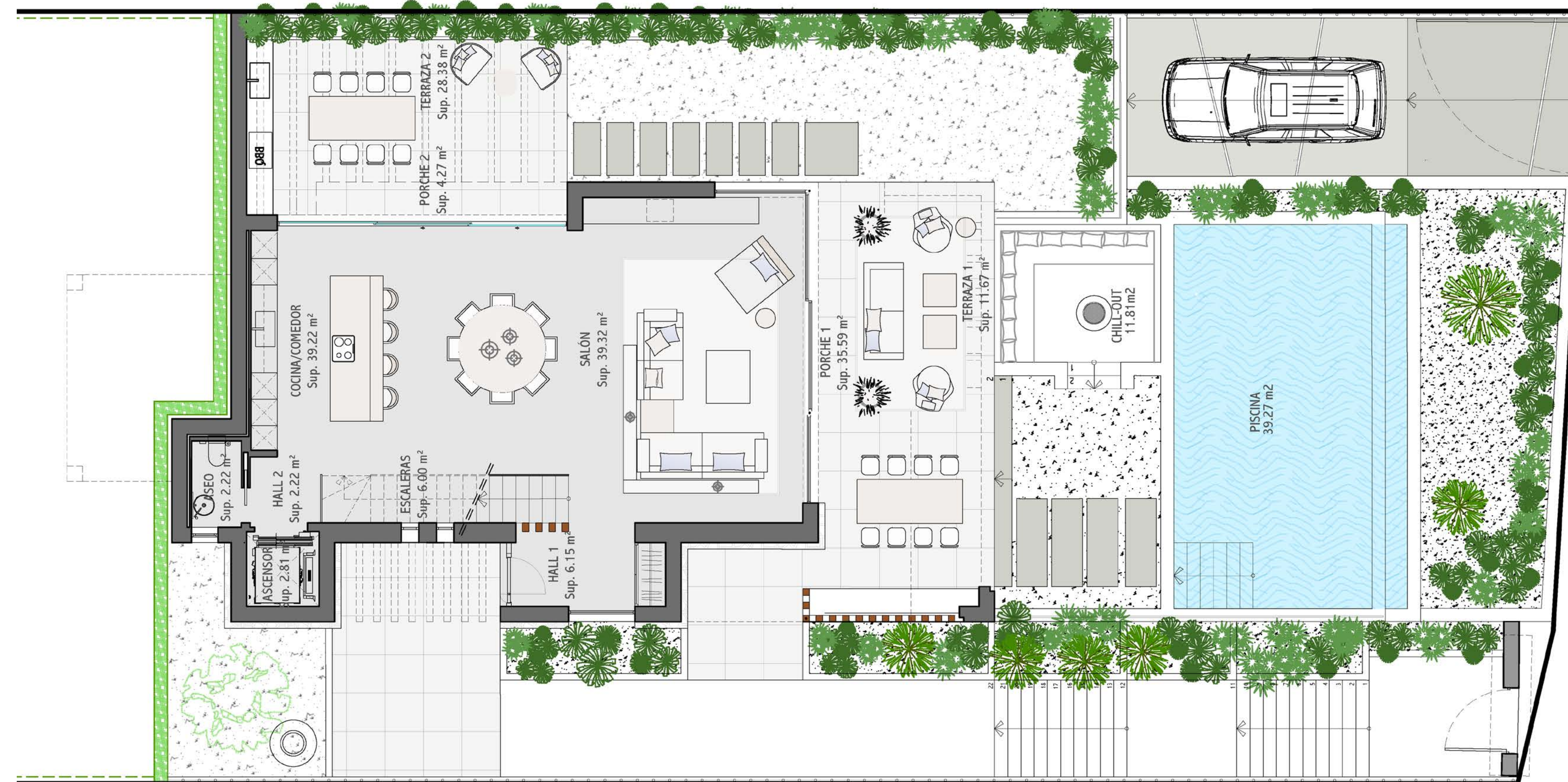
II
VILLA W12

III
VILLA W10

IIII
VILLA W08

GROUND FLOOR

Total Built Area: 121.12 m²
 Usable Pool Area: 39.27 m²
 Usable Terrace 1 and 2 Area: 40.05 m²
 Usable Porch Areas 1 and 2: 39.86 m²
 Usable Chill-Out Area: 11.81 m²



I
VILLA W14

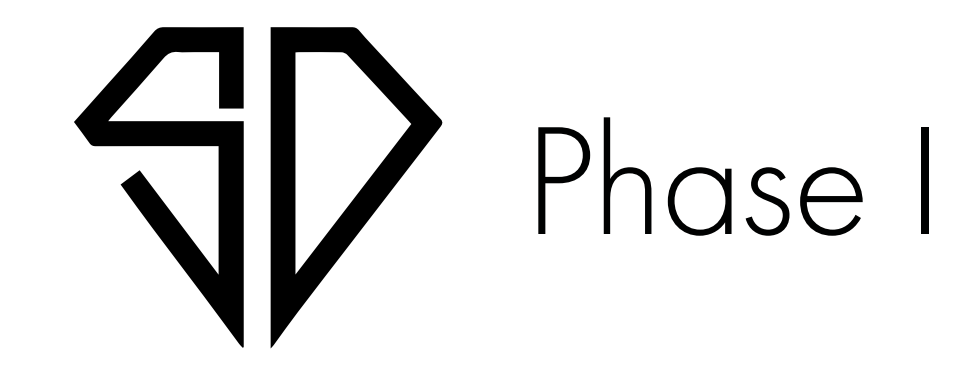
II
VILLA W12

III
VILLA W10

IIII
VILLA W08

FIRST FLOOR

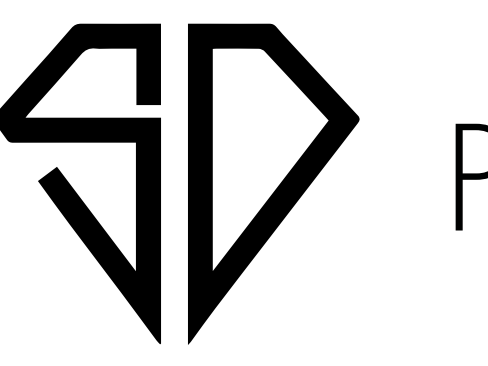
Total Built Area: 153.05 m²
Usable Porch Areas 3 and 4: 18.84 m²



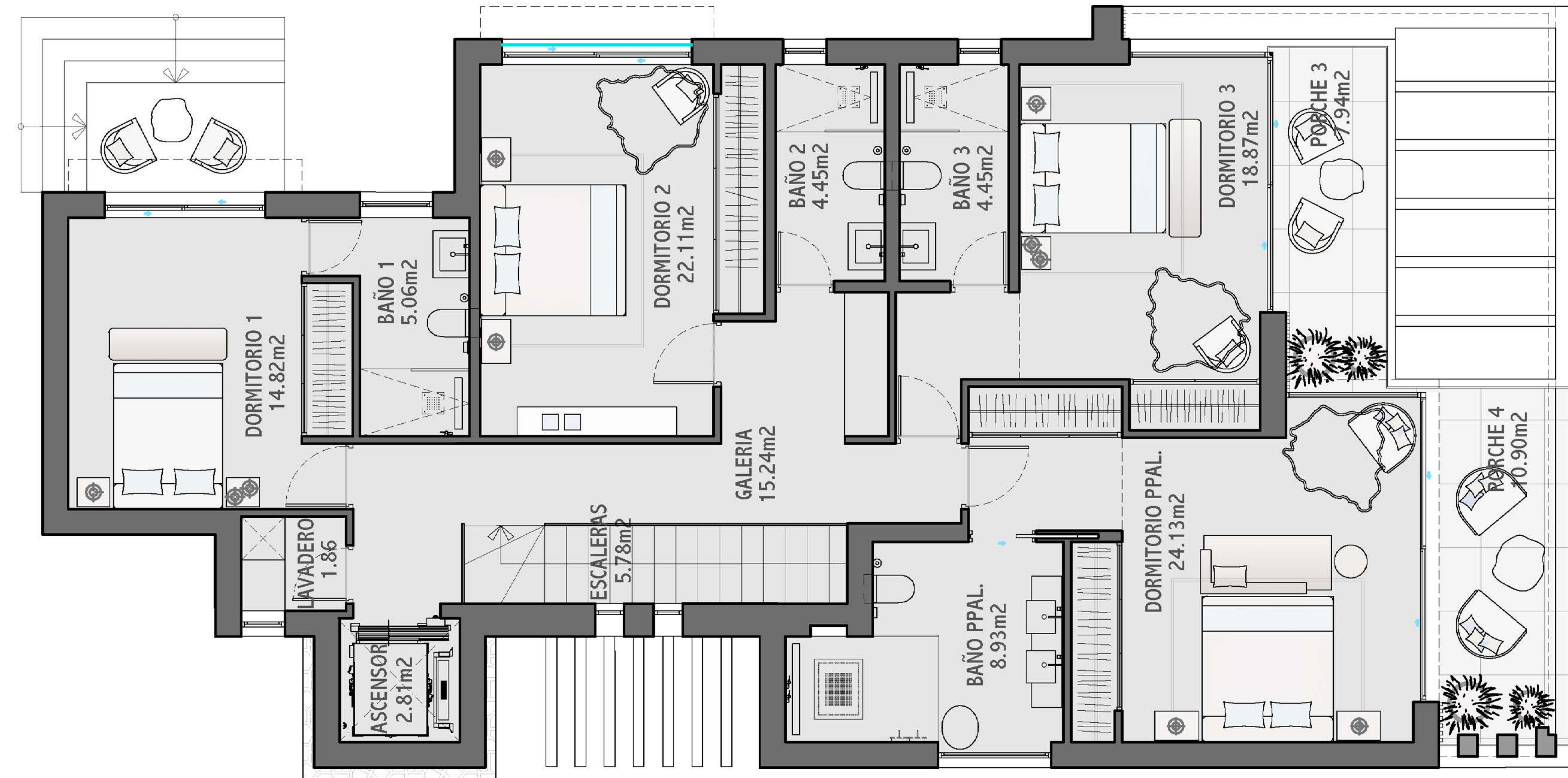
Phase I

BASEMENT

Total Built Area: 253.78 m²



Phase I

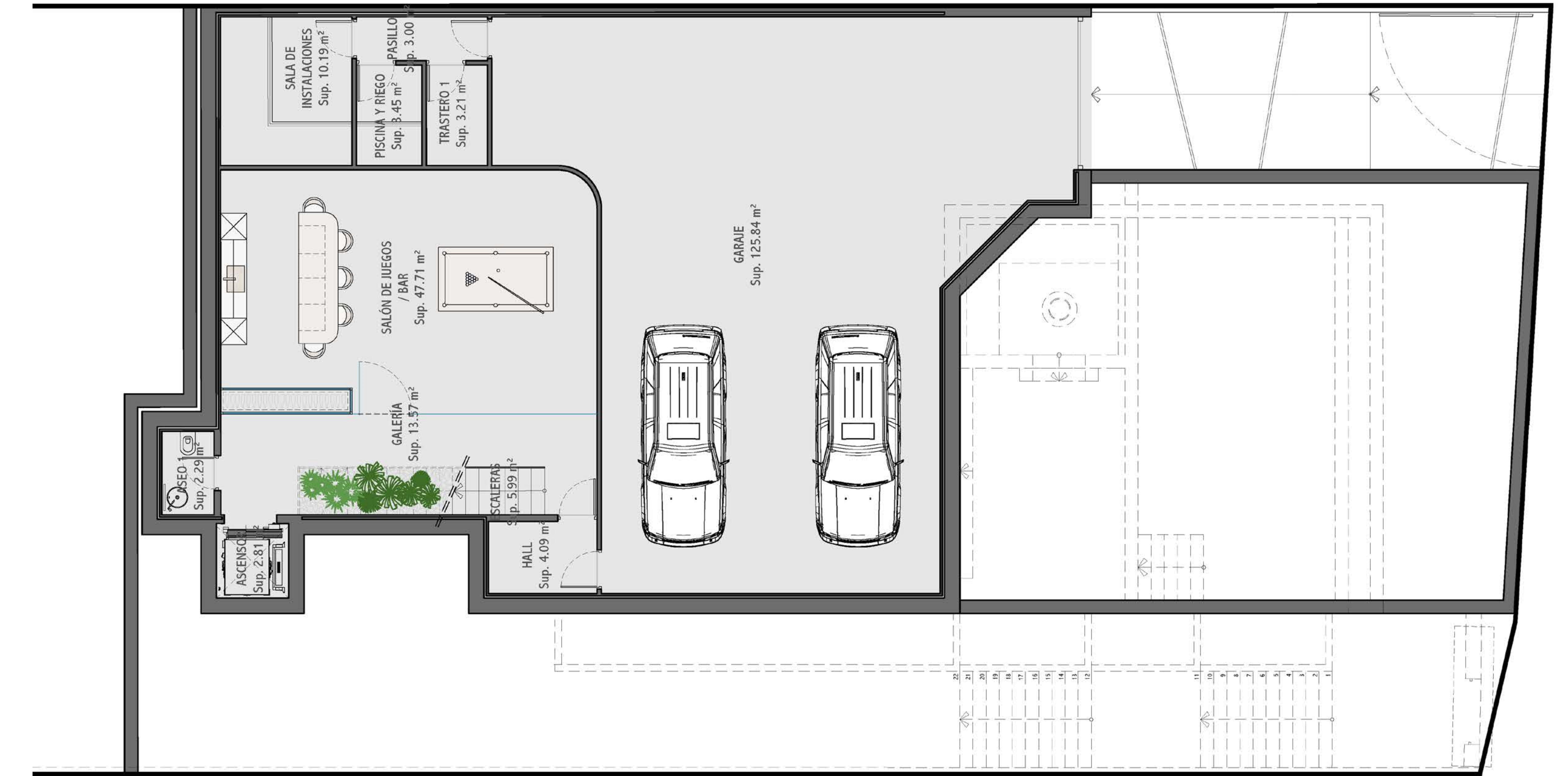


I
VILLA W14

II
VILLA W12

III
VILLA W10

IIII
VILLA W08



I
VILLA W14

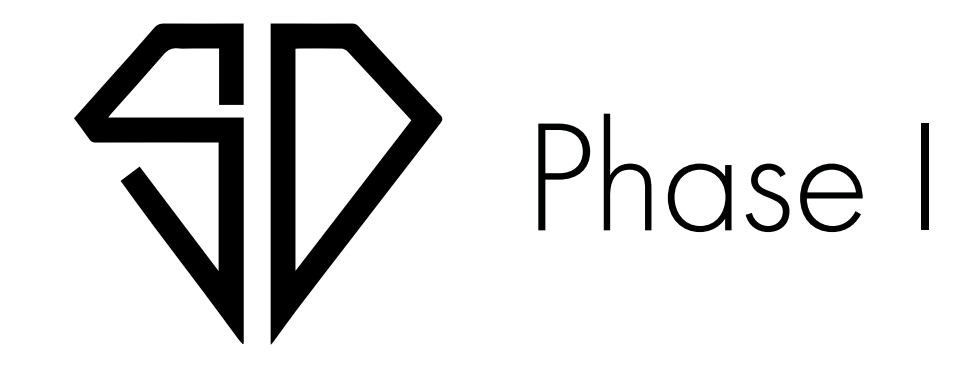
II
VILLA W12

III
VILLA W10

IIII
VILLA W08

FIRST FLOOR

Total Built Area: 153.05 m²
Usable Porch Areas 3 and 4: 18.84 m²



I
VILLA W14

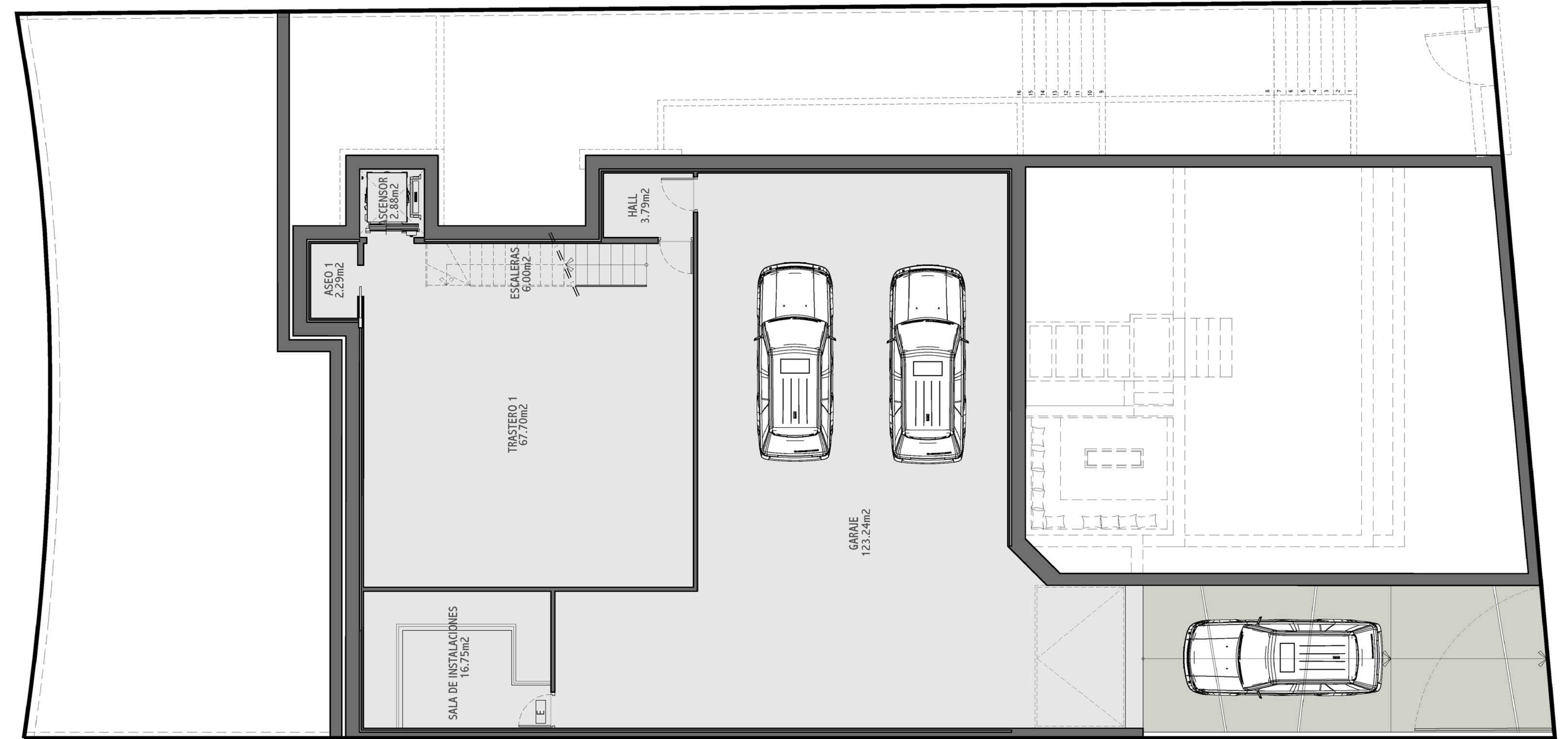
II
VILLA W12

III
VILLA W10

IIII
VILLA W08

BASEMENT

Total Built Area: 268.01 m²



I
VILLA W14

II
VILLA W12

III
VILLA W10

IIII
VILLA W08

SCENIC

The ground floor features a spacious open-plan kitchen and living area that opens onto extensive terraces and a chill-out area by the pool.

The upper floor includes a master suite with a private terrace and three additional bedrooms, each with en-suite bathrooms, offering plenty of space for relaxation.

The basement includes a large garage, a cinema room, and multiple storage areas, all connected by a private elevator.



I
VILLA W14

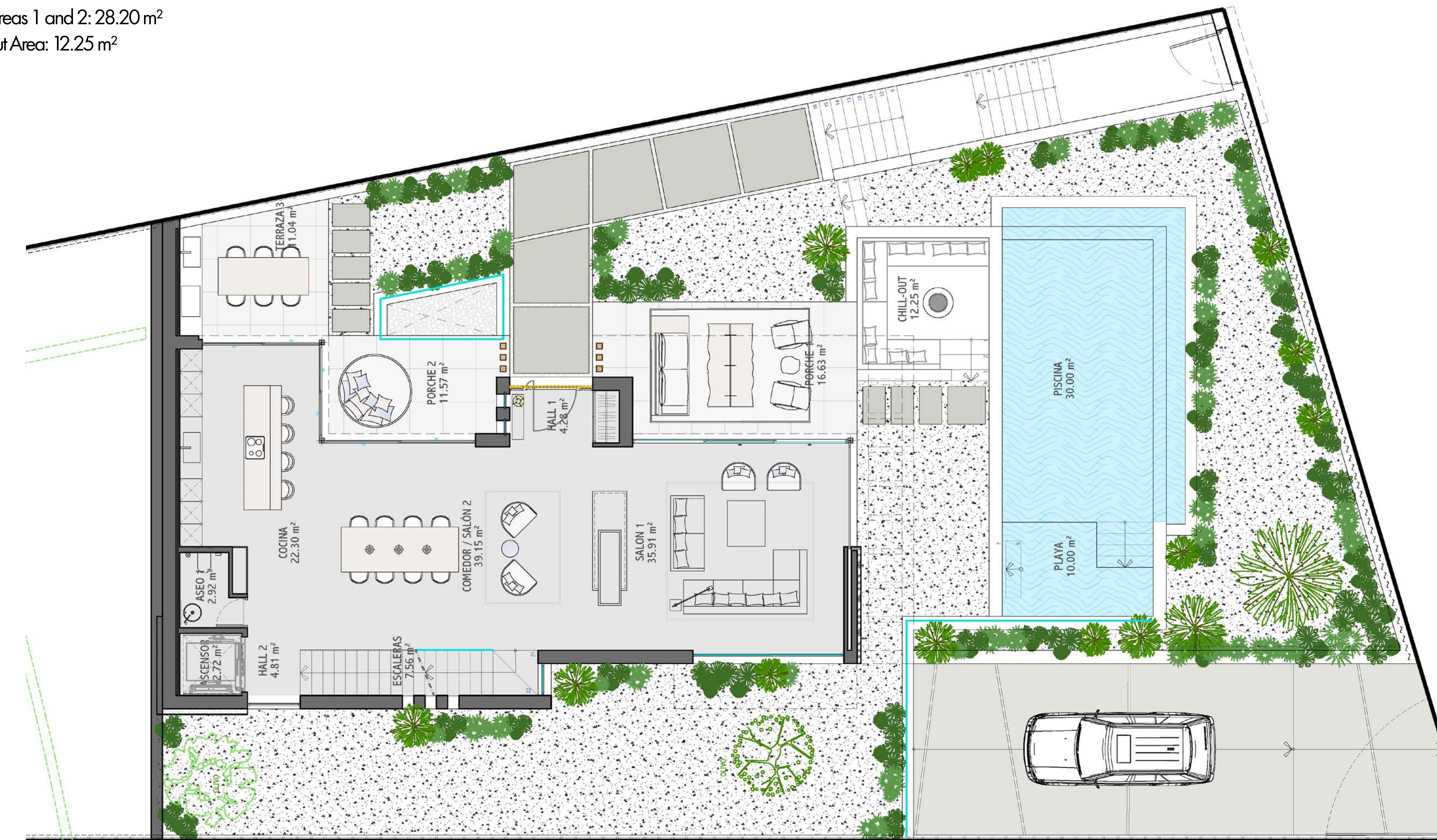
II
VILLA W12

III
VILLA W10

IIII
VILLA W08

GROUND FLOOR

- Total Built Area: 144.78 m²
- Usable Pool Area: 30.00 m²
- Usable Beach Area: 10.00 m²
- Usable Terrace 3 Area: 11.04 m²
- Usable Porch Areas 1 and 2: 28.20 m²
- Usable Chill-Out Area: 12.25 m²



I
VILLA W14

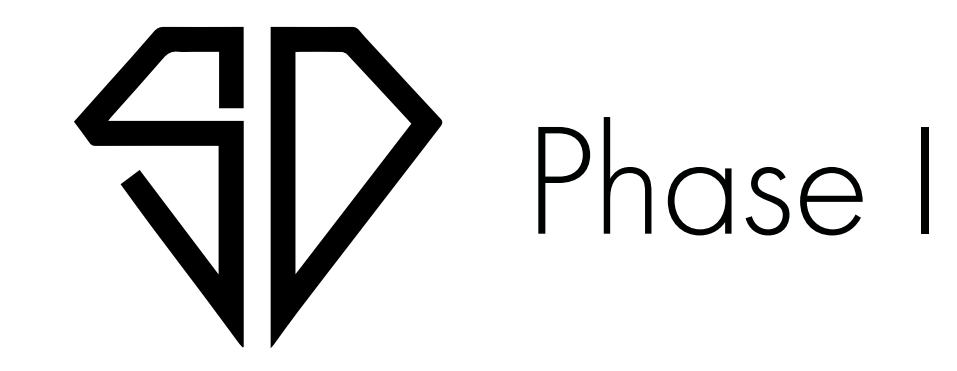
II
VILLA W12

III
VILLA W10

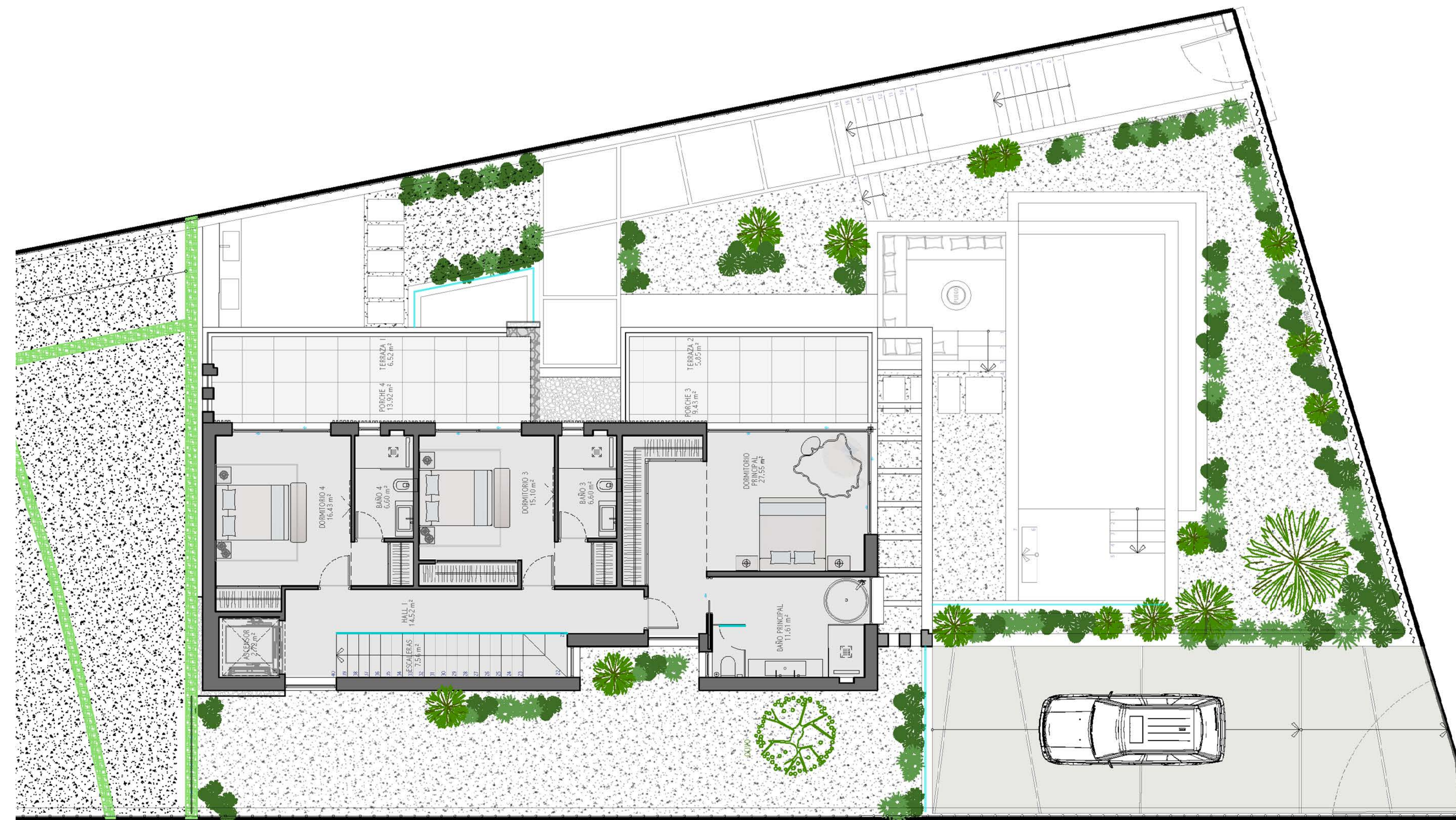
IIII
VILLA W08

FIRST FLOOR

Total Built Area (Upper Floor): 130.42 m²
 Usable Porch Areas 3 and 4: 23.35 m²
 Usable Porch Areas 1 and 2: 12.37 m²



Phase I



I
VILLA W14

II
VILLA W12

III
VILLA W10

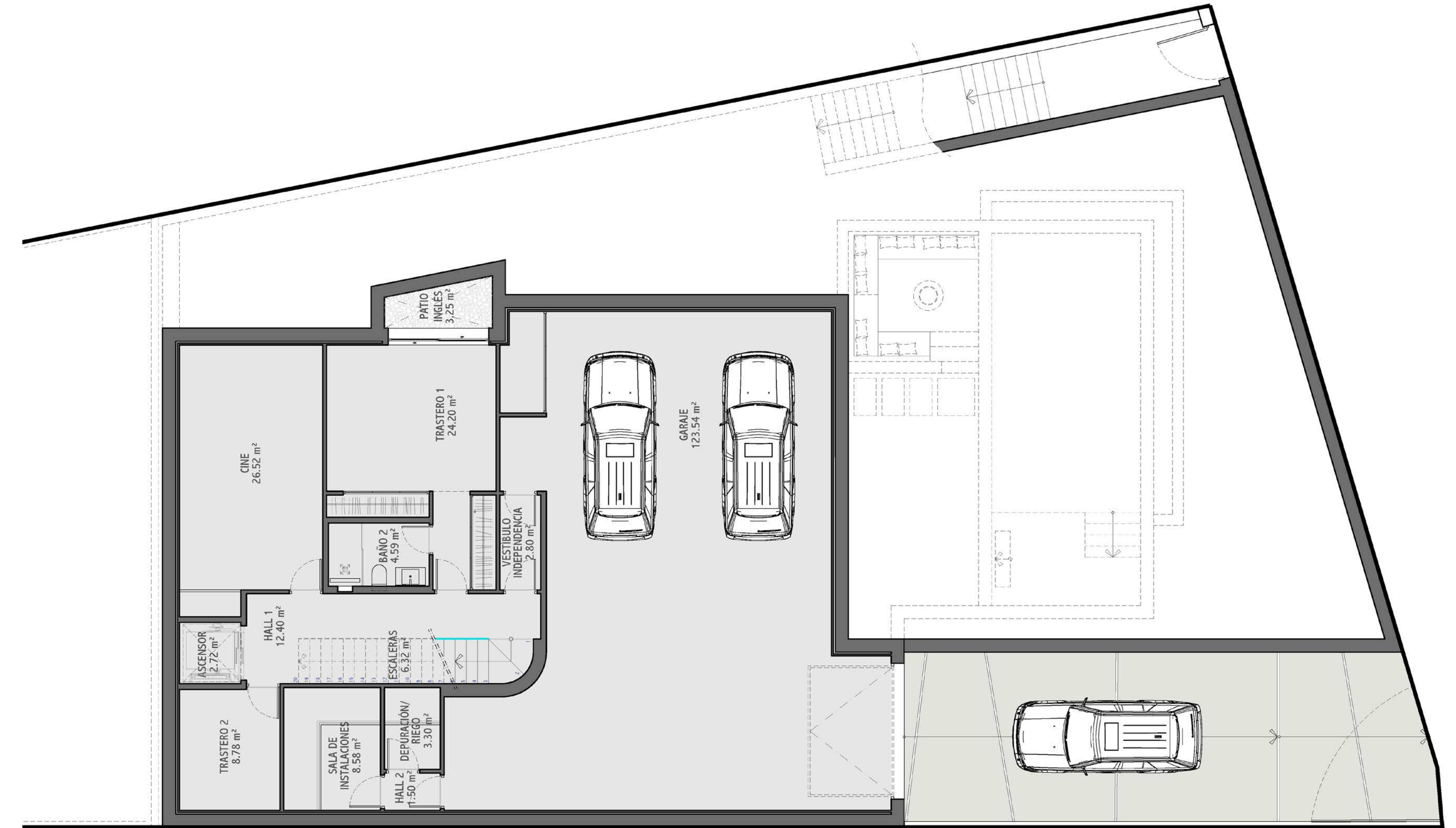
IIII
VILLA W08

BASEMENT

Total Built Area: 262.72 m²



Phase I



I
VILLA W14

II
VILLA W12

III
VILLA W10

IIII
VILLA W08

GALLERY SEVEN DIAMONDS VILLAS

7 Diamonds Villas are more than just homes; they represent our commitment to achieving the highest standards of luxury and quality.





Notice that all renders and materials are indicative and non contractual.



Notice that all renders and materials are indicative and non contractual.

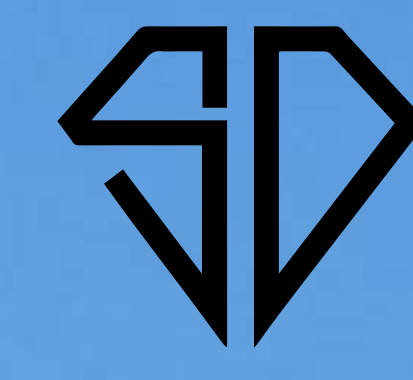




Notice that all renders and materials are indicative and non contractual.



Notice that all renders and materials are indicative and non contractual.



Views W12



Notice that all renders and materials are indicative and non-contractual.



Notice that all renders and materials are indicative and non contractual.



Notice that all renders and materials are indicative and non contractual.





Notice that all renders and materials are indicative and non-contractual.



Notice that all renders and materials are indicative and non-contractual.





Materials & Qualities.

Foundation & Structure.

Reinforced concrete using insulated and reticular slabs.

Exterior Enclosure.

Exterior wall with ceramic bricks of 12 cm.

Extruded EPS polystyrene insulation, 4 cm of insulation

Rockwool or similar and double internal plasterboard backing.

Roof.

Non-passable flat roof with XPS 12 cm insulation in the covered area.

Tiled for solar panels.

Facade.

White scraped monolayer coating and decorated stone walls, depending on the design specification.

Painted.

Exterior Carpentry.

Schüco aluminium frames with thermal bridge break, embedded in flooring.

Electric venecian blinds integrated into carpentry from Griesser.

Interior Partitions.

Acoustic brick, double, reinforced, with thermal and acoustic insulation "rockwool" if appropriate in the areas defined by the interior design specification.

False ceilings throughout.

Sound reducing ceilings in living areas.

Interior & Exterior Flooring.

Porcelanosa 100x100 cm cm and parquet wooden floors in the bedrooms. according to Design Project.

7 cm skirting integrated into the walls.

Indoor & Outdoor Lighting.

Interior LED throughout.

Indirect LED light in curtain boxes and sound reducing ceiling in living room.

Exterior wall light fittings and garden beacons according to Exterior Design specifications (if applicable).

Switches and sockets: Bticino Living Now.

Materials & Qualities.

Paintwork.

Smooth white RAL 9010.

Bathroom Coverings.

Top of the range ceramics from Porcelanosa.

Glazing.

Double-glazed windows with air chamber according to CTE.

Fixed windows of glass, folding or sliding glass in showers.

Safety glass railing 10+10 on terraces.

Heating & Air Conditioning.

Air conditioning via ducts with direct expansion heat pump. Air Zone with mobile control.

Electric towel heater in bathrooms.

Under floor heating with water throughout.

Additional electric underfloor heating in bathrooms.

Aerothermal electric heater.

Installation of air renewal and extraction.

10 KW Solar panel installation.

Exteriors.

Common garden areas: Finished according to landscaping design specification with irrigation system and lighting.

Privat infinity swimming pool: According to design project.

Interior Fittings.

KITCHEN

Furnished with tall and low glass and laquered matt from Modulnova.

Quooker tap in kitchen with cold water.

Natural stone worktop.

INTERNAL DOORS

Interior doors in smooth laquered white. Height floor to ceiling.

Hidden door frames.

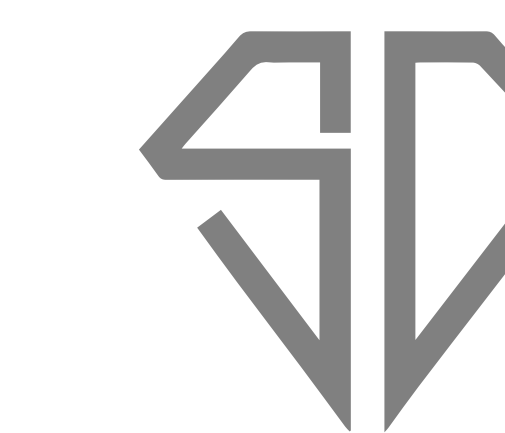
Design handle in stainless steel.

WARDROBES

Folding cupboard doors in lacquered smooth white.

Interior with shelves, chest of drawers and hanging bar, adapted to the space available.





Materials & Qualities.

BATHROOM FURNITURE

Complete in Solid Surface with mirror and built-in light.

Mirrors floating 10mm from the wall.

ENTRANCE DOORS

Pivot door armoured, with security lock.

Toilets & Tap Fittings.

White Duravit rimless, Model Philip Starck III.

Cistern from Geberit suspended toilet with cushioned lid.

Master bedroom: Japanese toilet, Duravit.

Black mixer taps from Hans Grohe.

Household Appliances.

Washing machine.

Oven.

Steam oven.

Induction hob with extraction..

Refrigerator.

Dishwasher Microwave.

Brand: Miele.

Special Facilities.

Video intercom.

Smart Home Automation System for blinds and

illumination.

Common water softener.

Sound proof ceiling in living room.

Solar panels 10 KW.

Guarantees.

Structure: 10 Years.

Installations: 3 Years.

Products (ex. white goods): 2 Years.

Finishing: 1 Year.

Special Features.

Exterior kitchen.

Chimnea, Gas Mini mil.

Build-in wine room.

Double parking.

Cinema Room.

Multi Room.

Gas Fire pit exterior.

Construction Process.

1 Foundation Base.

The foundation is laid with advanced engineering techniques, ensuring structural integrity and longevity. Our innovative approach sets the stage for a resilient and robust construction.

2 Structure.

The structural framework is engineered using high-strength, load-bearing materials, such as reinforced concrete using insulated and reticular slabs.

3 Roofing.

The roofing system incorporates cutting-edge technology and high-quality materials to offer superior protection and energy efficiency.

4 Interior.

The interior design combines sophisticated aesthetics with functional layouts. High-end finishes and smart home technology are integrated to create an environment that is both luxurious and practical.

5 Landscaping.

Our landscaping incorporates sustainable practices and advanced irrigation systems. The design is tailored to enhance the natural beauty of the surroundings, creating a seamless blend of indoor and outdoor spaces.

6 Completion.

The final phase involves quality checks and finishing touches. Every detail is handled with care to ensure the villa meets the highest standards of luxury and functionality, delivering a truly exceptional property.



THANK
YOU

SEVEN

DIA

MON

DS