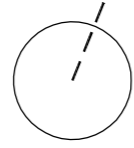
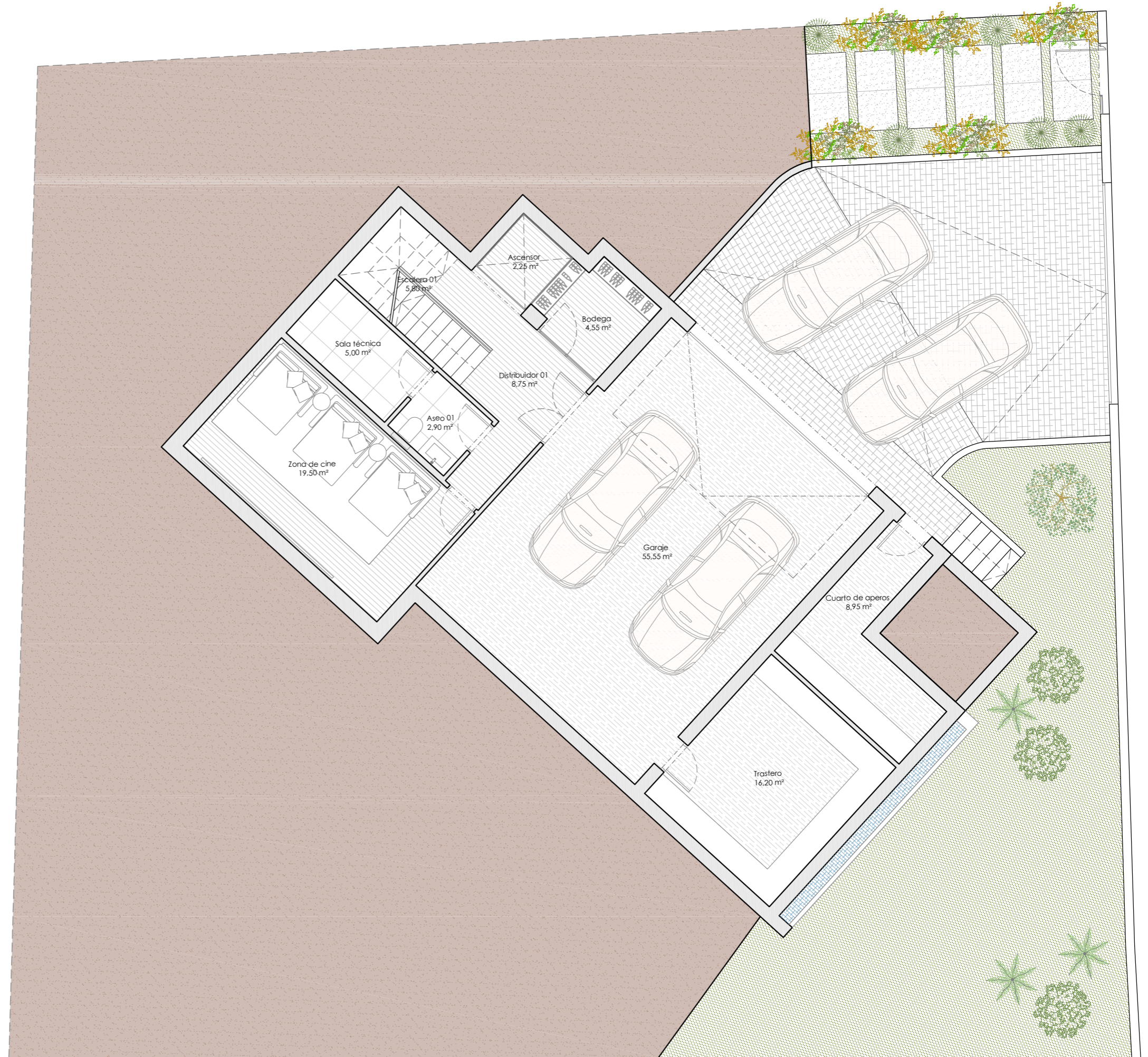


# PLANTA SÓTANO

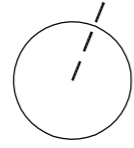


Superficie construida

152,00 m<sup>2</sup>

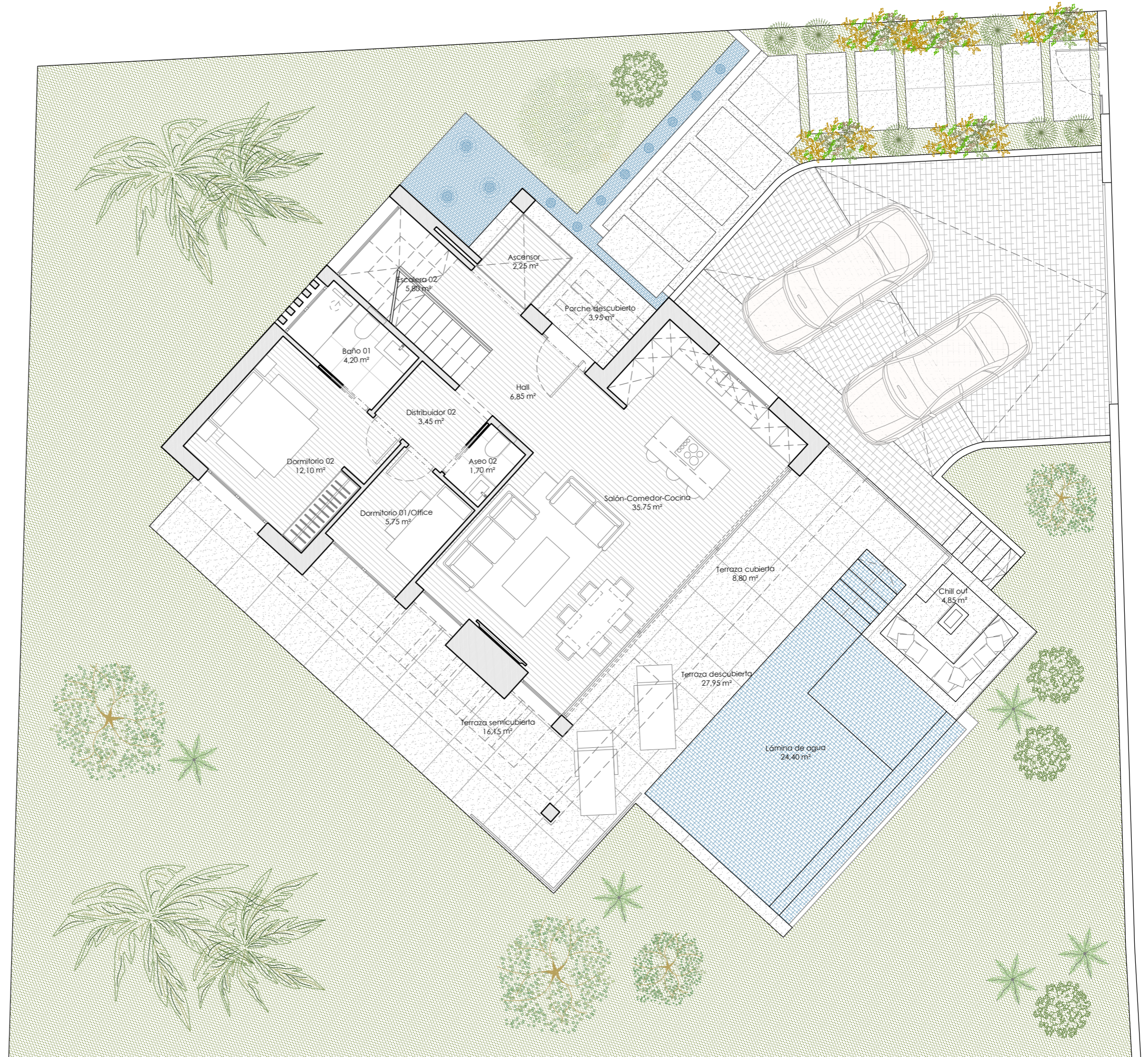


# PLANTA BAJA



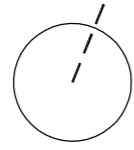
Superficie construida

92,45 m<sup>2</sup>

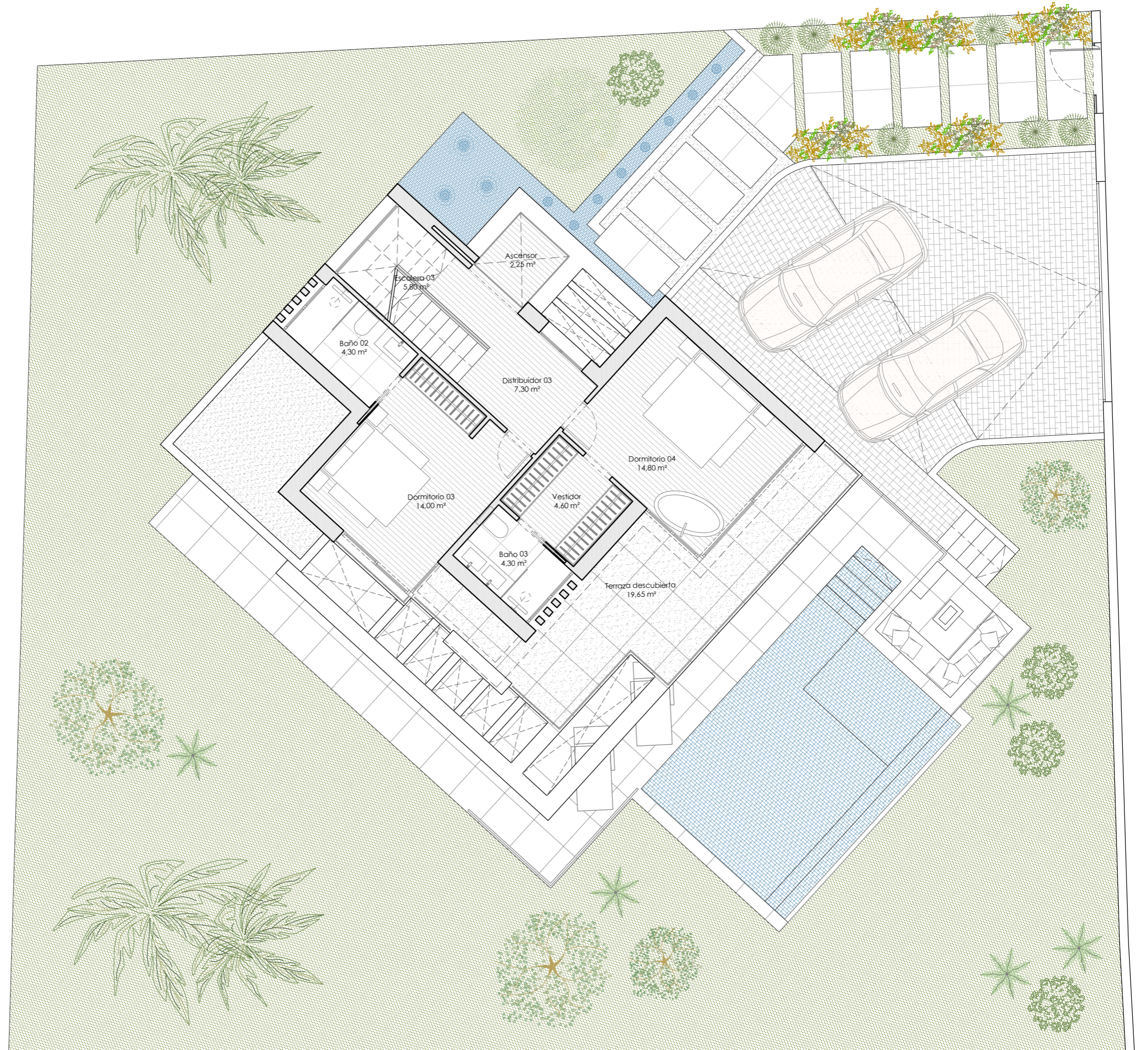


PLANTA ALTA

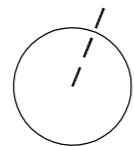
Superficie construida



69,00 m<sup>2</sup>

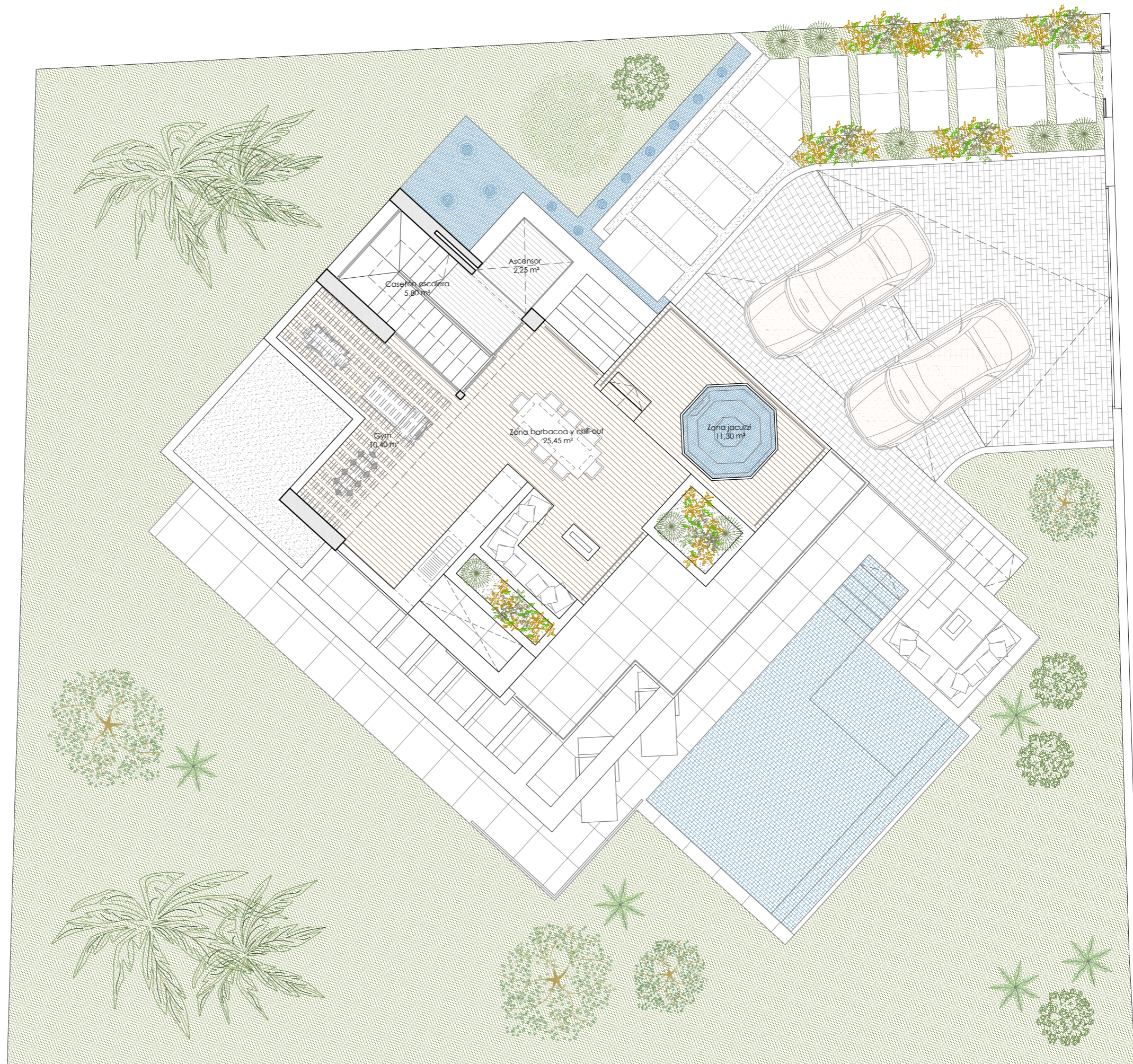


# PLANTA AZOTEA



Superficie construida

13,20 m<sup>2</sup>



PLANTA CUBIERTA

