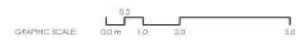
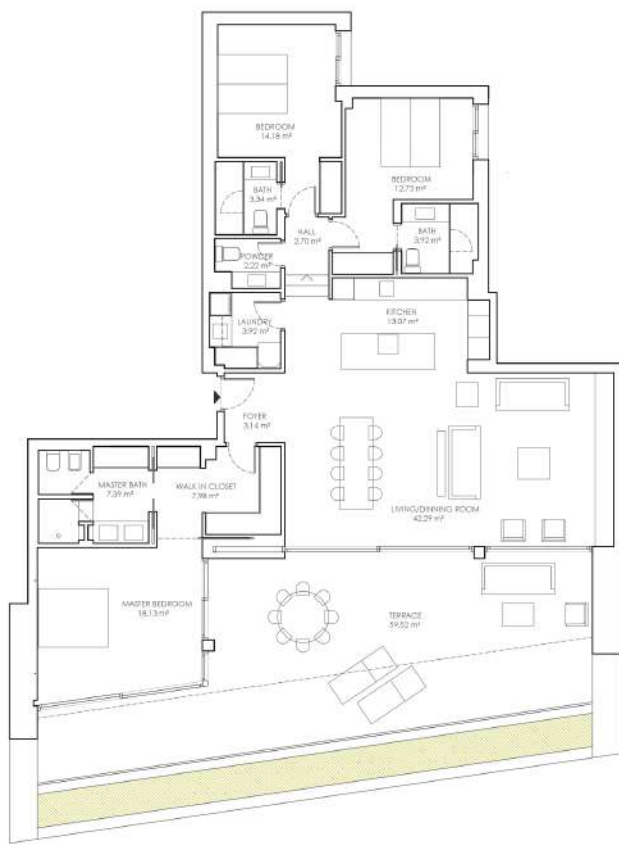
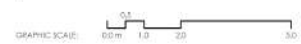


**APARTMENT 1 (DUPLEX)**  
 TOTAL BUILT AREA: 359,79 m<sup>2</sup>  
 (INCLUDING TERRACES AND P.P. OF COMMUNAL AREAS)



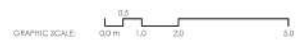


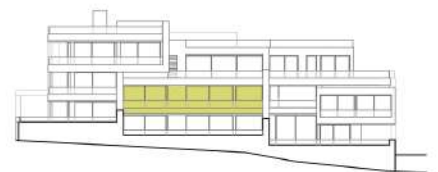
**APARTMENT 2**  
 TOTAL BUILT AREA: 257.08 m<sup>2</sup>  
 (INCLUDING TERRACES AND P.F.P. OF COMMUNAL AREAS)



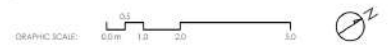


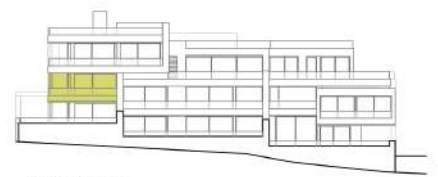
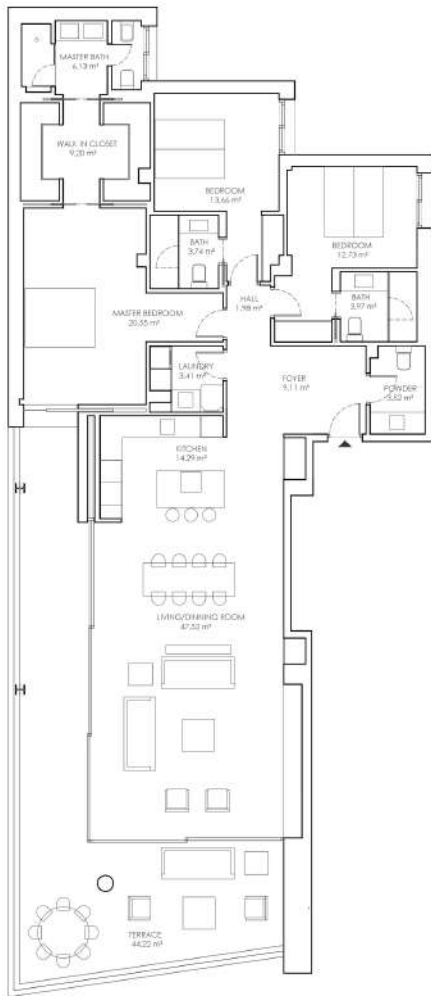
**APARTMENT 3**  
 TOTAL BUILT AREA: 311,15 m<sup>2</sup>  
 (INCLUDING TERRACES AND P.P. OF COMMUNAL AREAS)





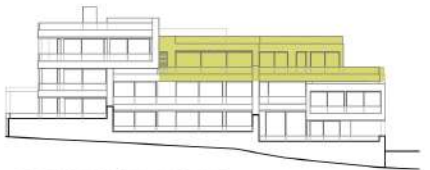
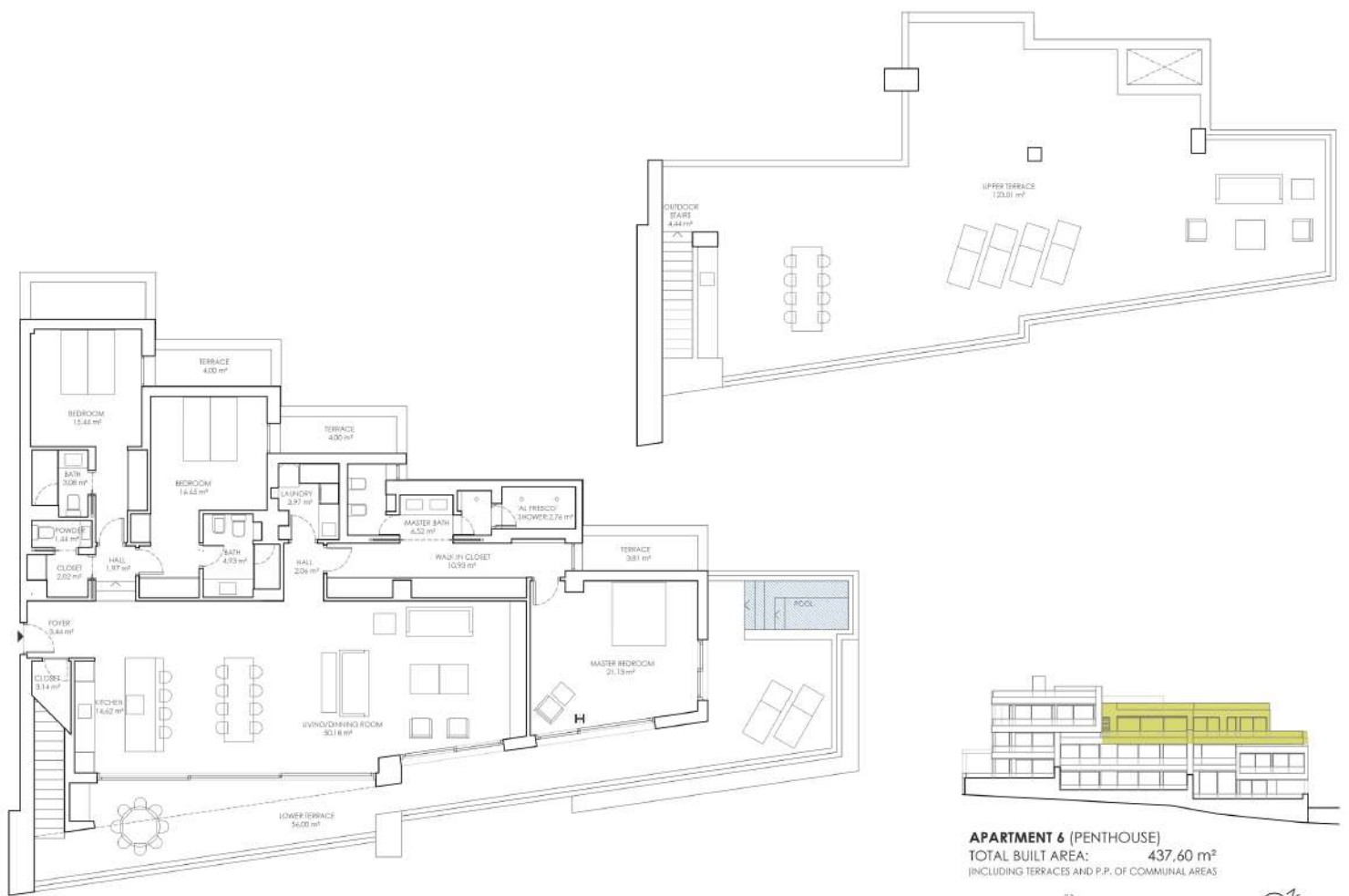
**APARTMENT 4**  
 TOTAL BUILT AREA: 204,48 m<sup>2</sup>  
 (INCLUDING TERRACES AND P.P. OF COMMUNAL AREAS)



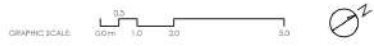


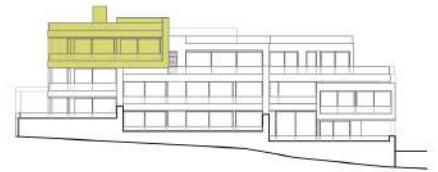
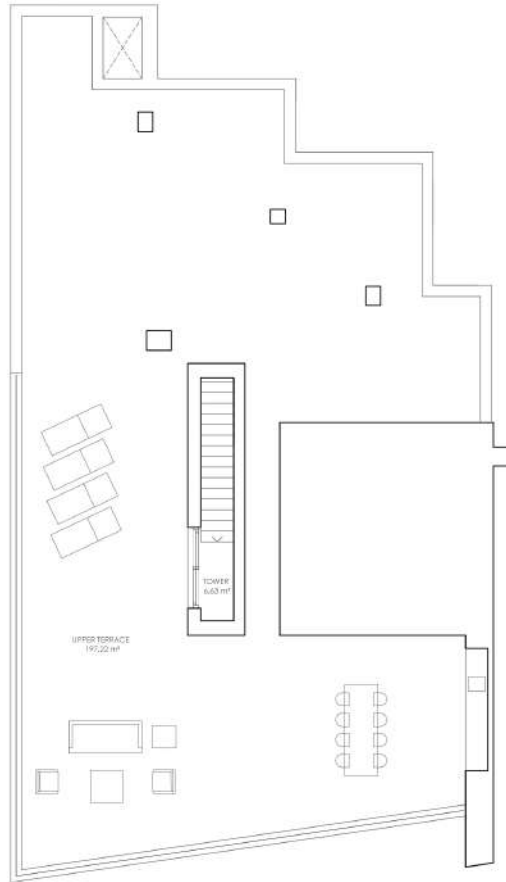
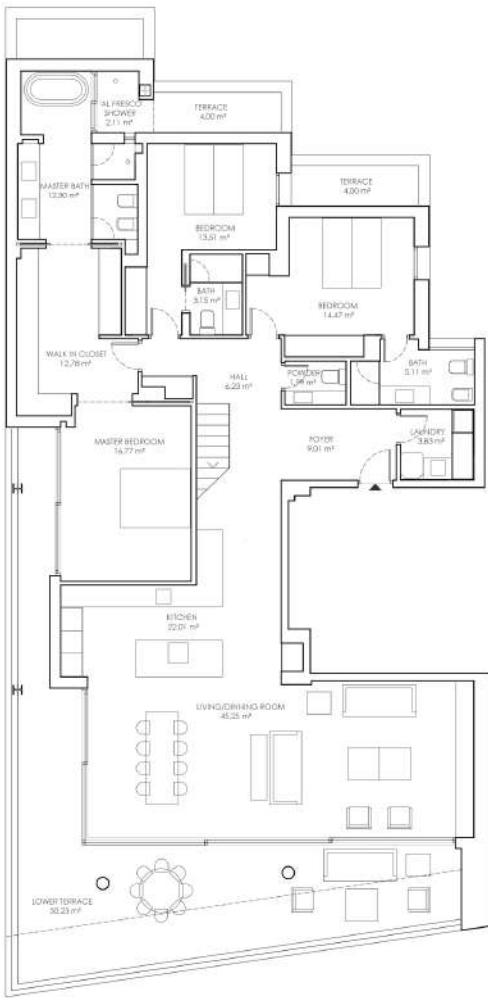
**APARTMENT 5**  
 TOTAL BUILT AREA: 244,96 m<sup>2</sup>  
 (INCLUDING TERRACES AND P.P. OF COMMUNAL AREAS)





**APARTMENT 6 (PENTHOUSE)**  
 TOTAL BUILT AREA: 437,60 m<sup>2</sup>  
 (INCLUDING TERRACES AND P.P. OF COMMUNAL AREAS)





**APARTMENT 7 (PENTHOUSE)**  
 TOTAL BUILT AREA: 515.53 m<sup>2</sup>  
 (INCLUDING TERRACES AND P.P. OF COMMUNAL AREAS)

