



M A S T E R P L A N

Total plot area: 4928.30 sqm

Total project build area: 2534.25 sqm

Orientation: East

Floors: 3

Bedroom Suites 7:

1 Master

4 Suites

1 Guest Suite

1 Service Suite

Bathrooms & Toilets 10:

8 Bathrooms

2 Toilets

Lift

Fireplaces

Swimming pools:
Outdoor Infinity pool
Indoor pool & Spa

Gymnasium

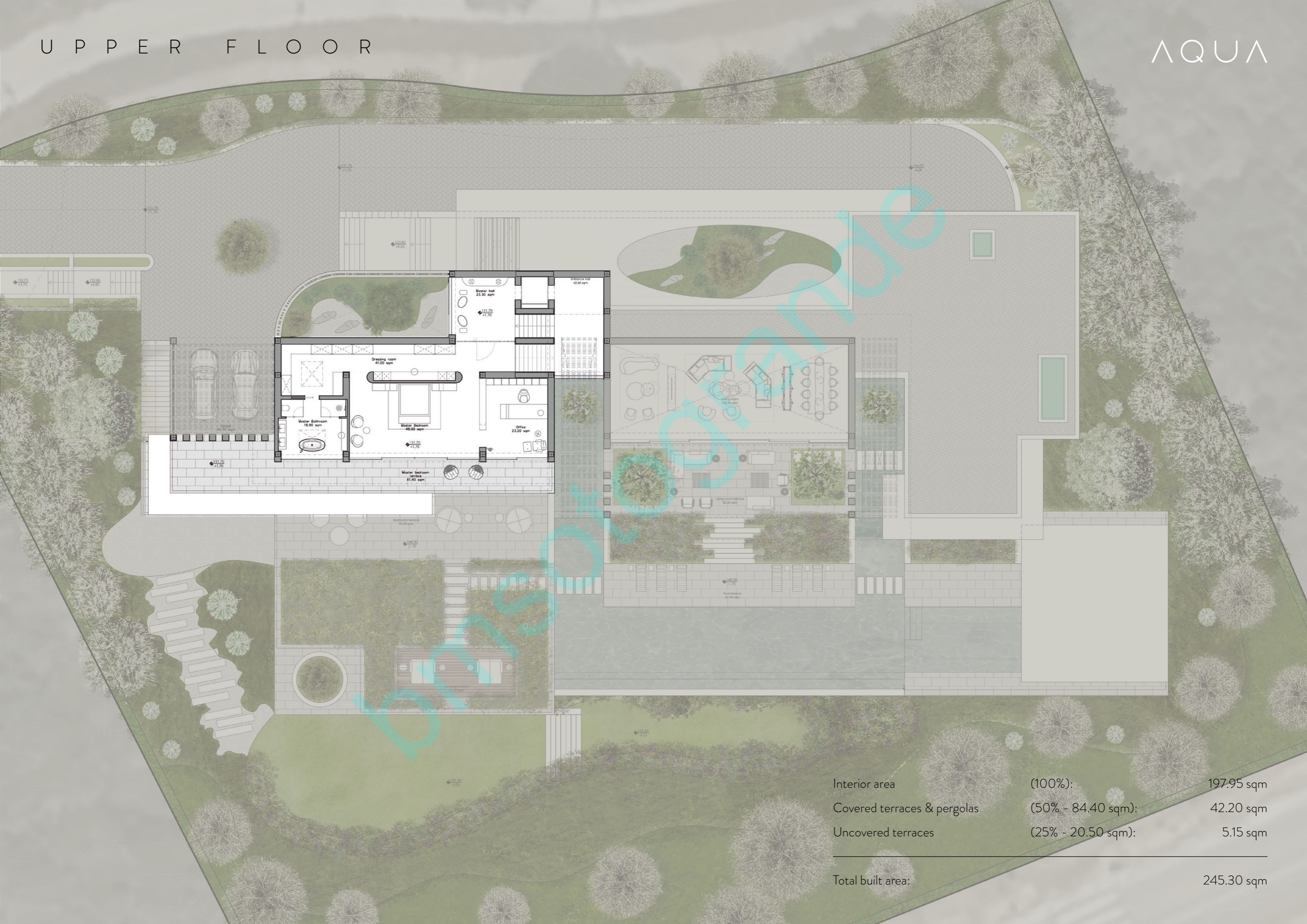
Home office

Garage car spaces:
8 Underground
2 Exterior in carport

Wine cellar



Interior area	(100%):	611.25 sqm
Double Height Living Room	(150% - 166.10 sqm):	249.10 sqm
Interior patio	(100% - 106.60 sqm):	106.60 sqm
Covered terraces & pergolas	(50% - 260.80 sqm):	130.40 sqm
Uncovered terraces	(25% - 405.25 sqm):	101.30 sqm
<hr/>		
Total built area:		1198.65 sqm



Interior area	(100%):	197.95 sqm
Covered terraces & pergolas	(50% - 84.40 sqm):	42.20 sqm
Uncovered terraces	(25% - 20.50 sqm):	5.15 sqm
<hr/>		
Total built area:		245.30 sqm