



VILLAGE VERDE

SOTOGRADE · ANDALUCÍA

3 Bedroom Apartment



165,61



from 123



3



3,5



2



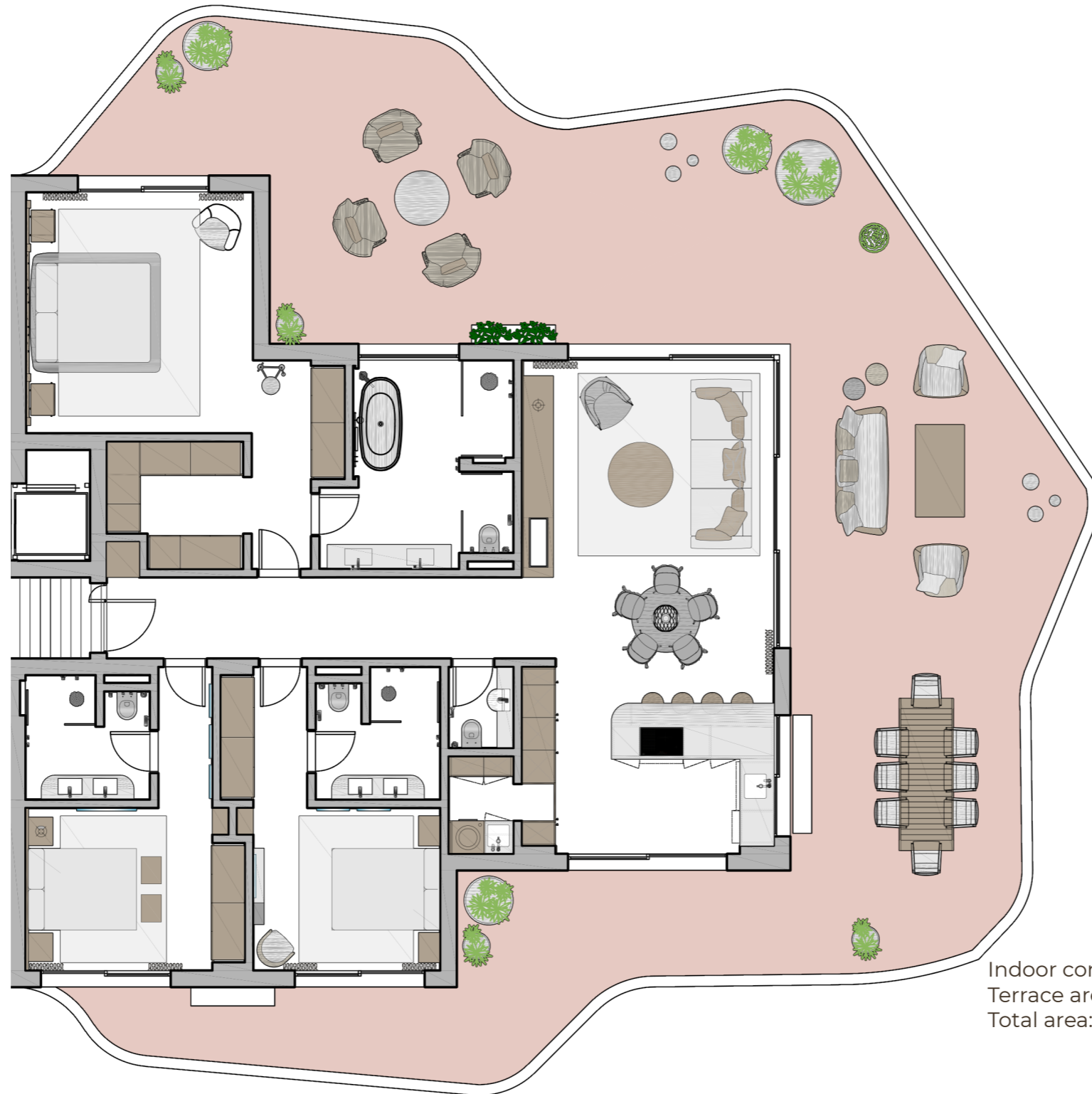
1

Usable area

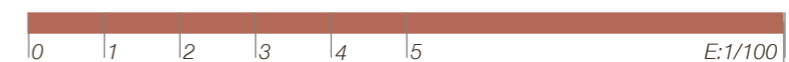
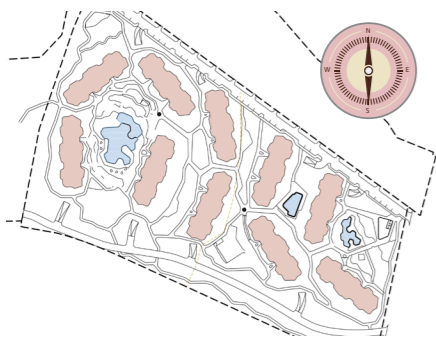
Hallway	11,85 m ²
Open plan lounge	42,05 m ²
Guest Toilet	1,80 m ²
Laundry	2,25 m ²
Bedroom I	18,60 m ²
Dressing room I	11,10 m ²
Bathroom I	11,75 m ²
Bedroom II	15,40 m ²
Bathroom II	4,90 m ²
Bedroom III	14,50 m ²
Bathroom III	5,20 m ²

Total area

Indoor constructed area: 165,61 m² / Indoor usable area: 139,40 m²
 Terrace area: from 123 m²
 Total area: 288,61 m²



Site Plan



This document is for information only. The areas and measurements shown are approximate and may be modified for technical reasons and/or administrative issues. All furniture shown is for illustrative purposes.