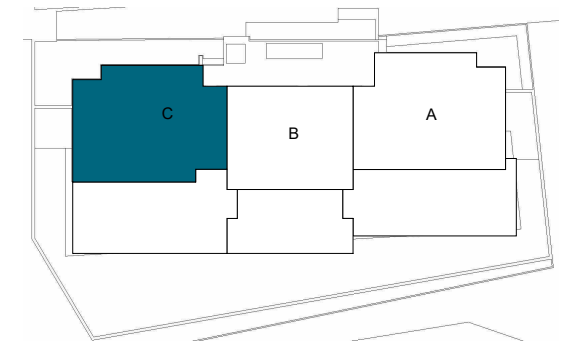


**LOCATION**



**BLOCK 3**

**APPROXIMATE AREAS**

Entrance	4,20 m <sup>2</sup>
Living room - Kitchen	44,54 m <sup>2</sup>
Hall	2,92 m <sup>2</sup>
Master Bedroom	17,10 m <sup>2</sup>
Master bathroom	6,74 m <sup>2</sup>
Bedroom 2	12,49 m <sup>2</sup>
Bedroom 3	12,64 m <sup>2</sup>
Bathroom 2	4,85 m <sup>2</sup>
<b>INTERNAL USEFUL FLOOR AREA</b>	<b>105,48 m<sup>2</sup></b>

<b>INTERNAL BUILT AREA</b>	<b>122,57 m<sup>2</sup></b>
<b>P.P. COMMON AREAS</b>	<b>36,78 m<sup>2</sup></b>
<b>INTERNAL BUILT AREA INCLUDING PP. COMMON AREAS</b>	<b>159,35 m<sup>2</sup></b>

<b>EXTERNAL AREAS</b>	
Covered laundry room	4,07 m <sup>2</sup>
Covered terrace	54,97 m <sup>2</sup>
Uncovered terrace	15,51 m <sup>2</sup>
<b>EXTERNAL USEFUL FLOOR AREA</b>	<b>74,55 m<sup>2</sup></b>

<b>REGARDING DECRETO BOJA 218/2005</b>	
<b>TOTAL USEFUL FLOOR AREA</b>	<b>116,03 m<sup>2</sup></b>
<b>TOTAL BUILT AREA</b>	<b>169,90 m<sup>2</sup></b>



**Apartment 31C**

The information contained may be modified during the course of the work execution due to technical or legal requirements, without implying any reduction in the overall level of qualities. The access steps to the dwelling and exits to courtyards may be altered according to the level of the streets and it is up to the D.F. to set the criteria.