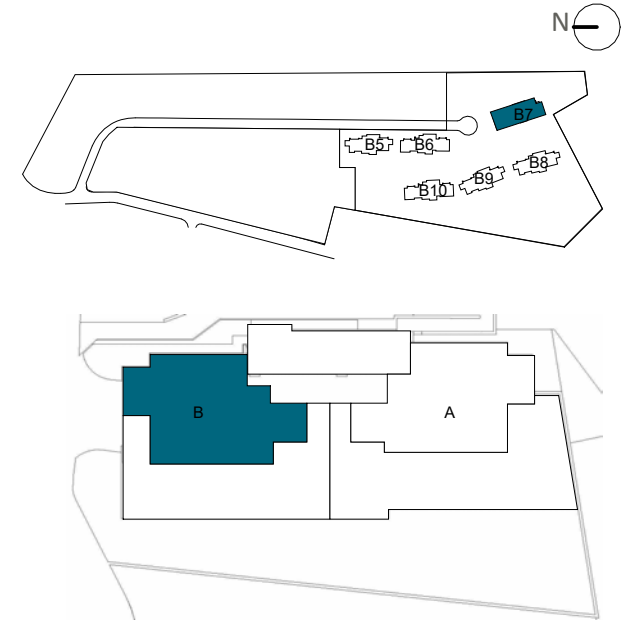


**LOCATION**



**BLOCK 7**

**APPROXIMATE AREAS**

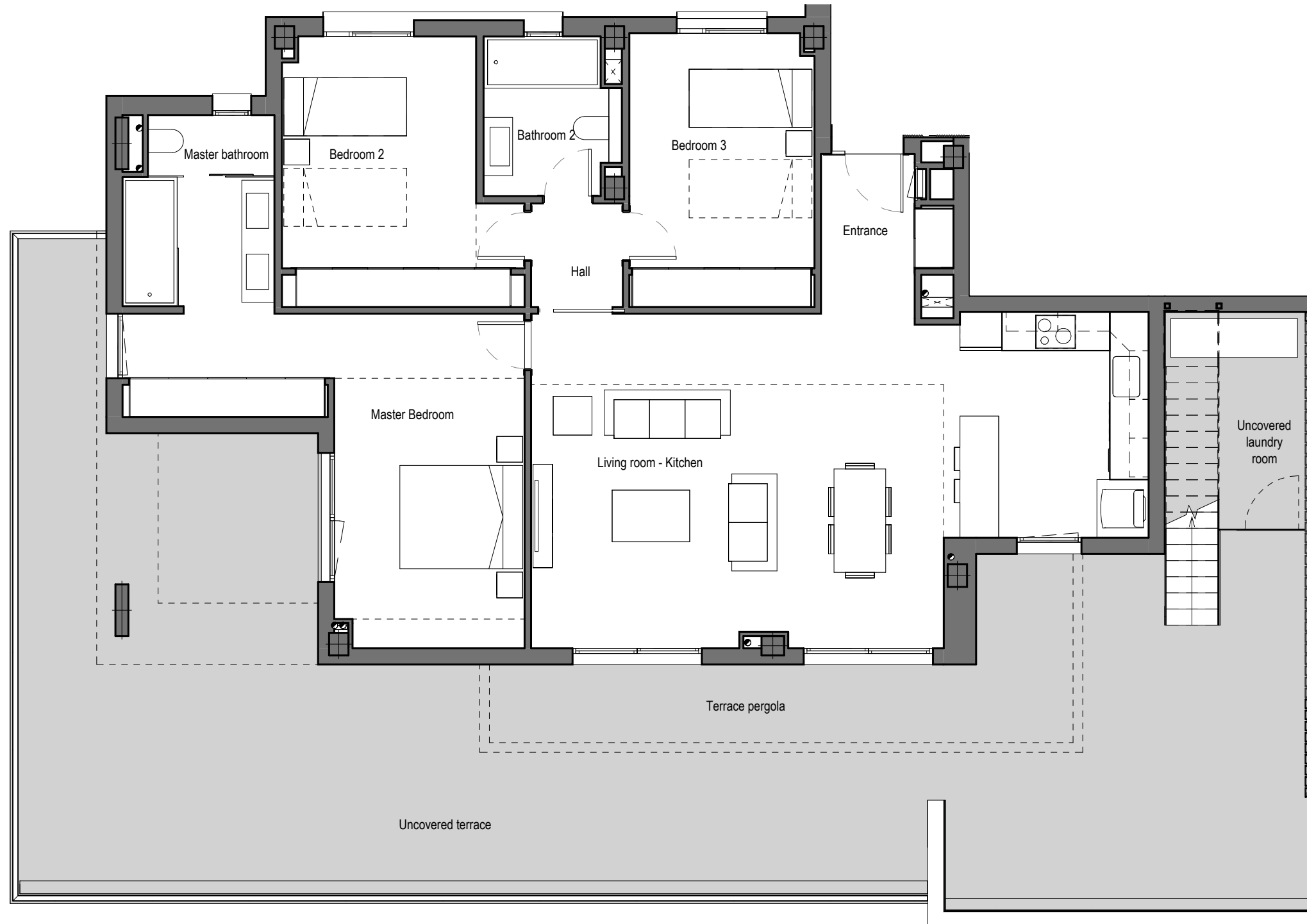
Entrance	4,19 m <sup>2</sup>
Living room - Kitchen	43,82 m <sup>2</sup>
Hall	2,28 m <sup>2</sup>
Master Bedroom	20,31 m <sup>2</sup>
Master bathroom	6,74 m <sup>2</sup>
Bedroom 2	13,70 m <sup>2</sup>
Bedroom 3	12,07 m <sup>2</sup>
Bathroom 2	4,85 m <sup>2</sup>
<b>INTERNAL USEFUL FLOOR AREA</b>	<b>107,96 m<sup>2</sup></b>

<b>INTERNAL BUILT AREA</b>	<b>127,11 m<sup>2</sup></b>
<b>P.P. COMMON AREAS</b>	<b>39,09 m<sup>2</sup></b>
<b>INTERNAL BUILT AREA INCLUDING PP. COMMON AREAS</b>	<b>166,20 m<sup>2</sup></b>

<b>EXTERNAL AREAS</b>	
Uncovered laundry room	6,75 m <sup>2</sup>
Terrace pergola	21,11 m <sup>2</sup>
Uncovered terrace	80,60 m <sup>2</sup>
<b>EXTERNAL USEFUL FLOOR AREA</b>	<b>108,46 m<sup>2</sup></b>

<b>USEFUL FLOOR AREA SOLARIUM</b>	<b>71,20 m<sup>2</sup></b>
-----------------------------------	----------------------------

<b>REGARDING DECRETO BOJA 218/2005</b>	
<b>TOTAL USEFUL FLOOR AREA</b>	<b>118,76 m<sup>2</sup></b>
<b>TOTAL BUILT AREA</b>	<b>177,00 m<sup>2</sup></b>



**Penthouse 72B**

The information contained may be modified during the course of the work execution due to technical or legal requirements, without implying any reduction in the overall level of qualities. The access steps to the dwelling and exits to courtyards may be altered according to the level of the streets and it is up to the D.F. to set the criteria.  
The pool represented in the commercial plan of the solarium floor, and infographics, is not included in the project, nor in the sale price. It is an option for buyers, the cost of which will be added to the purchase price.