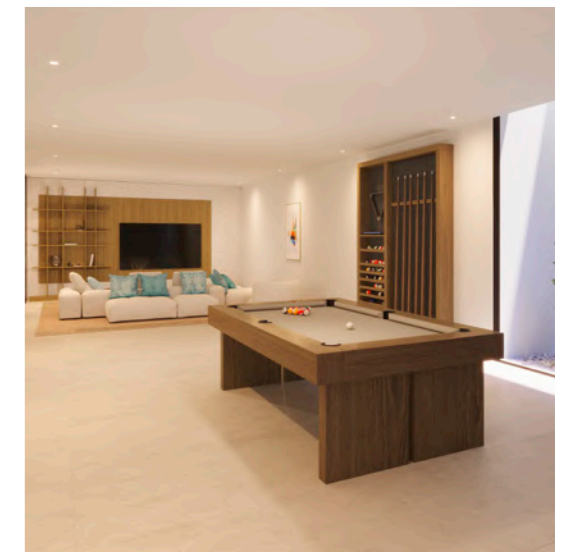
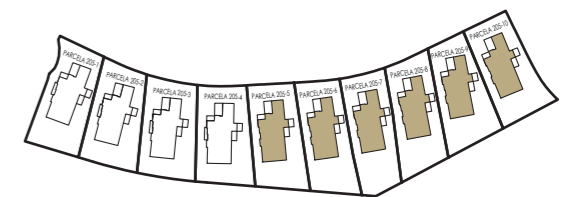


VIVIENDA TIPO B
HOME TYPE B



LD-II= landing II | MBR= master bedroom I | MWIC= master walking-in closet | MB= master bathroom |MT= master bedroom terrace | BR-I= bedroom I | B-I= bathroom I | BRT-I= bedroom terrace I

SUPERFICIES CONSTRUIDAS CERRADAS
ENCLOSED COVERED AREAS

Planta baja / Ground floor	132,59 m ²
Planta alta / Top floor	81,20 m ²
Planta sótano / Basement	188,13 m ²

T. Sup. sobre rasante / T. A. over ground level	226,04 m ²
T. Sup. bajo rasante / T. A. under ground level	188,13 m ²
Según decreto 218/2005 / Decree 218/2005	226,04 m ² (1)

SUPERFICIES CONSTRUIDAS ABIERTAS
UNCLOSED COVERED AREAS

Porche / Porch	2,77 m ²
Tendedero / Drying place	5,90 m ²
Terraza salón / Living room terrace	52,78 m ²
Terraza dormitorio. ppal. / M. bedroom terrace	26,50 m ²
Terrazas dormitorio. II. / Bedroom II terrace	20,00 m ²
Patios sótano / Basement patios	16,75 m ²

T. Sup. sobre rasante / T. A. over ground level	107,95 m ²
T. Sup. bajo rasante / T. A. under ground level	16,75 m ²
Según decreto 218/2005 / Decree 218/2005	12,25 m ² (2)

(1) Superficie construida computable de la vivienda / fully enclosed covered area over ground level.

(2) Según el DECRETO 218/2005 de la Junta de Andalucía, se computa como superficie útil de los espacios exteriores de uso privativo el 50% de la superficie real de su suelo, hasta un máximo del 10% de la superficie útil cerrada de la vivienda correspondiente / in compliance with the 218/2005 DECREE of the Junta de Andalucía, the useful surface of exterior floor spaces which are for the private use of the dwellings means 50% of the actual surface, to a maximum 10% of the useful enclosed surface.

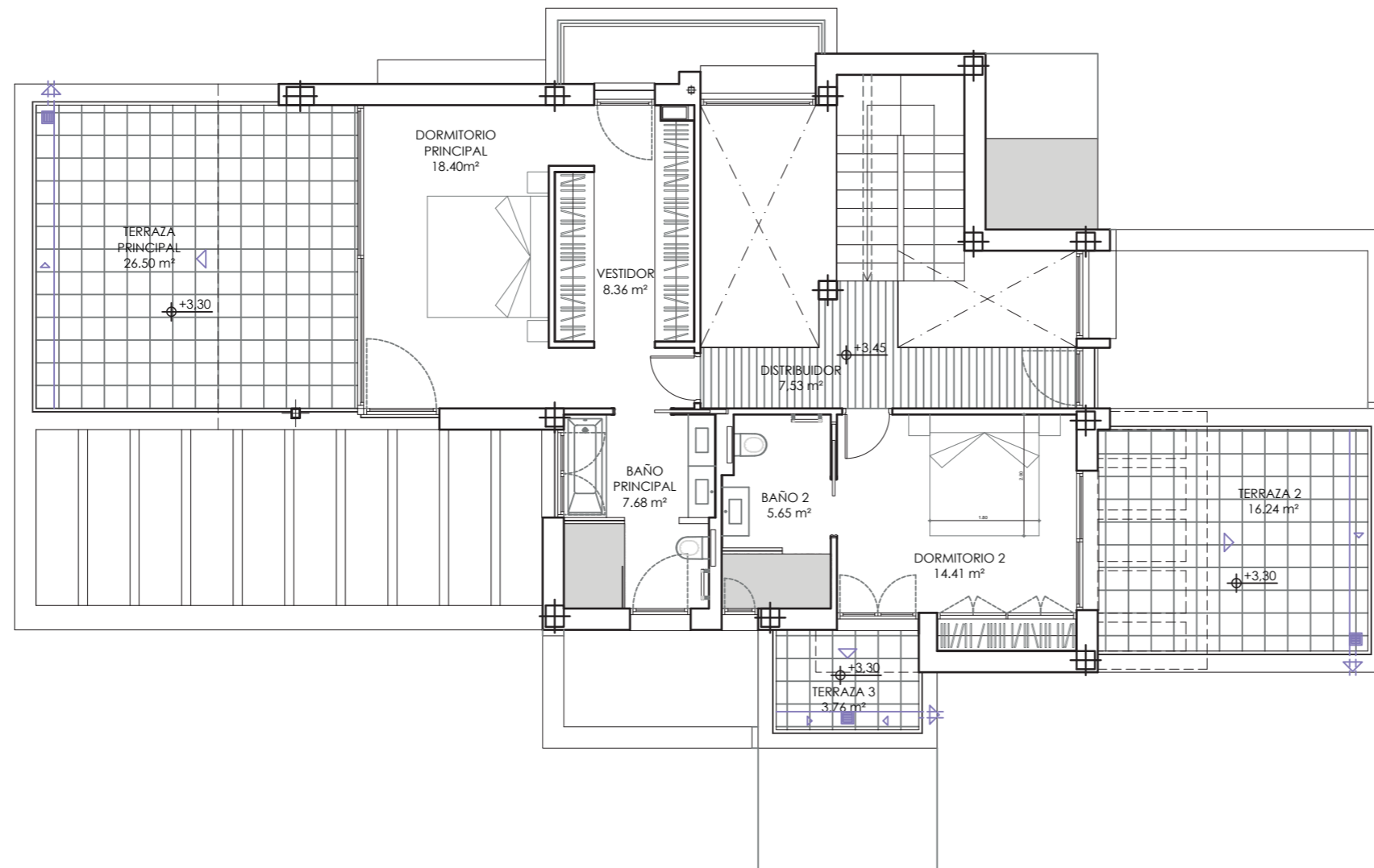
GOLF VIEWS ASSETS, S.L, inscrita en el Registro Mercantil de Málaga, Tomo 5.739, Libro 4646, Folio 33, Sección 8, Hoja MA-145587, Inscripción 00000001 | CIF: B-93622314 | Oficina Principal - C.C. Centro Plaza, 12 | oficina 12 | 29660 | Nueva Andalucía (Madrid) | tlf. +34 952 81 00 00

Information, computer graphics and graphic documentation that appear in this floor plan are indicative, finishes may include extras not included and are subject to changes arising from final project and its construction. All the furniture is merely decorative. The other information referred to in R.D. 218/2005 of the Government of Andalusia is available in our offices for consultation.

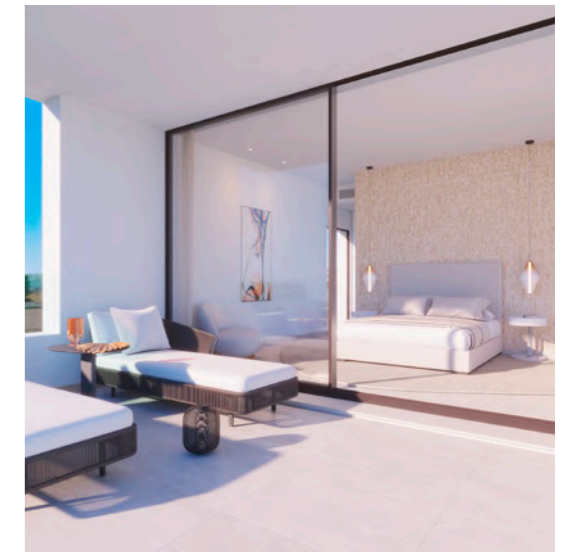
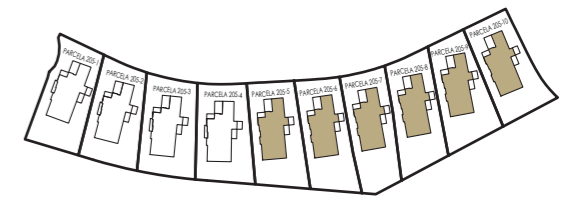


Desarrollado por:
Developed by:





VIVIENDA TIPO B
HOME TYPE B



LD-II= landing II | MBR= master bedroom I | MWIC= master walking-in closet | MB= master bathroom |MT= master bedroom terrace | BR-I= bedroom I | B-I= bathroom I | BRT-I= bedroom terrace I

SUPERFICIES CONSTRUIDAS CERRADAS
ENCLOSED COVERED AREAS

Planta baja / Ground floor	132,59 m ²
Planta alta / Top floor	81,20 m ²
Planta sótano / Basement	188,13 m ²

T. Sup. sobre rasante / T. A. over ground level	226,04 m ²
T. Sup. bajo rasante / T. A. under ground level	188,13 m ²
Según decreto 218/2005 / Decree 218/2005	226,04 m ² (1)

SUPERFICIES CONSTRUIDAS ABIERTAS
UNCLOSED COVERED AREAS

Porche / Porch	2,77 m ²
Tendedero / Drying place	5,90 m ²
Terraza salón / Living room terrace	52,78 m ²
Terraza dormitorio. ppal. / M. bedroom terrace	26,50 m ²
Terrazas dormitorio. II. / Bedroom II terrace	20,00 m ²
Patios sótano / Basement patios	16,75 m ²

T. Sup. sobre rasante / T. A. over ground level	107,95 m ²
T. Sup. bajo rasante / T. A. under ground level	16,75 m ²
Según decreto 218/2005 / Decree 218/2005	12,25 m ² (2)

(1) Superficie construida computable de la vivienda / fully enclosed covered area over ground level.

(2) Según el DECRETO 218/2005 de la Junta de Andalucía, se computa como superficie útil de los espacios exteriores de uso privativo el 50% de la superficie real de su suelo, hasta un máximo del 10% de la superficie útil cerrada de la vivienda correspondiente / in compliance with the 218/2005 DECREE of the Junta de Andalucía, the useful surface of exterior floor spaces which are for the private use of the dwellings means 50% of the actual surface, to a maximum 10% of the useful enclosed surface.

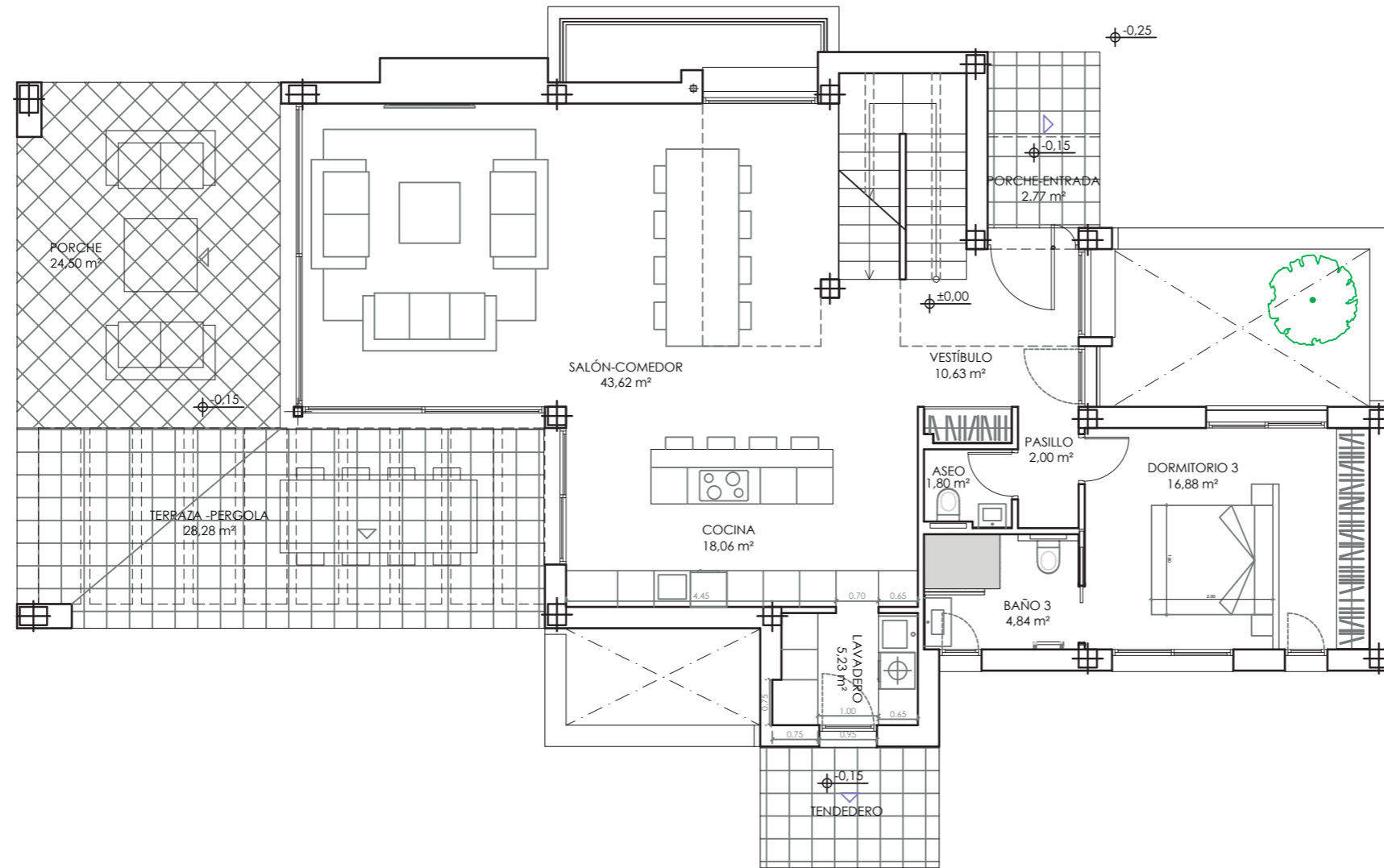
GOLF VIEWS ASSETS, S.L, Inscrita en el Registro Mercantil de Málaga, Tomo 5.739, Lbro 4646, Folio 33, Sección 8, Haja MA-145587, Inscripción 00000001 | CIF: B-93622314 | Oficina Principal - C.C. Centro Plaza, 12 | oficina 12 | 29660 | Nueva Andalucía (Madrid) | tlf. +34 952 81 00 00

Information, computer graphics and graphic documentation that appear in this floor plan are indicative, finishes may include extras not included and are subject to changes arising from final project and its construction. All the furniture is merely decorative. The other information referred to in R.D. 218/2005 of the Government of Andalusia is available in our offices for consultation.

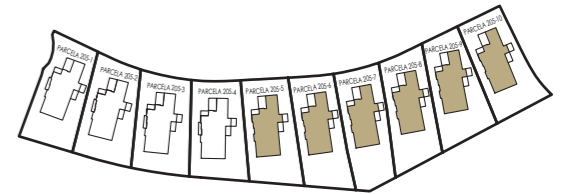


Desarrollado por:
Developed by:





VIVIENDA TIPO B
HOME TYPE B



LD-II= landing II | MBR= master bedroom I | MWIC= master walking-in closet | MB= master bathroom |MT= master bedroom terrace | BR-I= bedroom I | B-I= bathroom I | BRT-I= bedroom terrace I

SUPERFICIES CONSTRUIDAS CERRADAS
ENCLOSED COVERED AREAS

Planta baja / Ground floor	132,59 m ²
Planta alta / Top floor	81,20 m ²
Planta sótano / Basement	188,13 m ²

T. Sup. sobre rasante / T. A. over ground level	226,04 m ²
T. Sup. bajo rasante / T. A. under ground level	188,13 m ²
Según decreto 218/2005 / Decree 218/2005	226,04 m ² (1)

SUPERFICIES CONSTRUIDAS ABIERTAS
UNCLOSED COVERED AREAS

Porche / Porch	2,77 m ²
Tendedero / Drying place	5,90 m ²
Terraza salón / Living room terrace	52,78 m ²
Terraza dormitorio. ppal. / M. bedroom terrace	26,50 m ²
Terrazas dormitorio. II. / Bedroom II terrace	20,00 m ²
Patios sótano / Basement patios	16,75 m ²

T. Sup. sobre rasante / T. A. over ground level	107,95 m ²
T. Sup. bajo rasante / T. A. under ground level	16,75 m ²
Según decreto 218/2005 / Decree 218/2005	12,25 m ² (2)

(1) Superficie construida computable de la vivienda / fully enclosed covered area over ground level.

(2) Según el DECRETO 218/2005 de la Junta de Andalucía, se computa como superficie útil de los espacios exteriores de uso privativo el 50% de la superficie real de su suelo, hasta un máximo del 10% de la superficie útil cerrada de la vivienda correspondiente / in compliance with the 218/2005 DECREE of the Junta de Andalucía, the useful surface of exterior floor spaces which are for the private use of the dwellings means 50% of the actual surface, to a maximum 10% of the useful enclosed surface.

GOLF VIEWS ASSETS, S.L, Inscrita en el Registro Mercantil de Málaga, Tomo 5.739, Lbro 4646, Folio 33, Sección 8, Hoja MA-145587, Inscripción 00000001 | CIF: B-93622314 | Oficina Principal - C.C. Centro Plaza, 12 | oficina 12 | 29660 | Nueva Andalucía (Madrid) | tlf. +34 952 81 00 00

Information, computer graphics and graphic documentation that appear in this floor plan are indicative, finishes may include extras not included and are subject to changes arising from final project and its construction. All the furniture is merely decorative. The other information referred to in R.D. 218/2005 of the Government of Andalusia is available in our offices for consultation.



Desarrollado por:
Developed by:

