



## Usable Area

Living Room + Kitchen	57,70m <sup>2</sup>
Master Bedroom	52,30m <sup>2</sup>
Bedroom 1	27,30m <sup>2</sup>
Bedroom 2	25,60m <sup>2</sup>
Terrace 1	47,50m <sup>2</sup>
Terrace 2	8,90m <sup>2</sup>

\*All dimensions are approximate and will depend on the final layout of the construction.

## FLOOR 4



\*Indicative plan, not legally binding.



## Usable Area

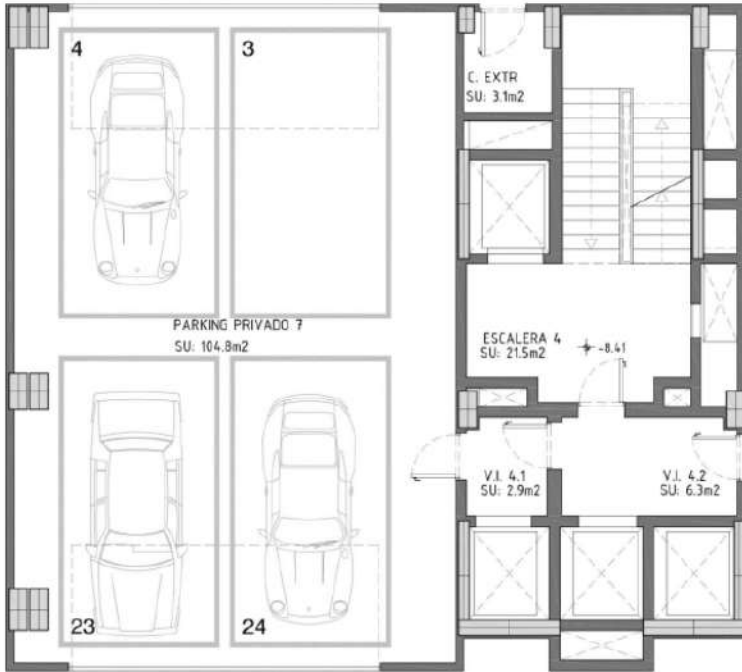
Utility Room	22,90m <sup>2</sup>
Terrace	204,10m <sup>2</sup>
Storage Room	4,20m <sup>2</sup>

\*All dimensions are approximate and will depend on the final layout of the construction.

## SOLARIUM



\*Indicative plan, not legally binding.



## Usable Area

**Supergarage** 104,80m<sup>2</sup>

\*All dimensions are approximate and will depend on the final layout of the construction.

FLOOR 4



\*Indicative plan, not legally binding.