

G

# The Grove

MARBELLA WEST





PRAXFER  
HOMES

25



# A UNIQUE WAY OF LIFE ON THE COSTA DEL SOL

## THE GROVE URBAN RESORT LIVING

Located in **Marbella West**, a new and rapidly evolving district, **The Grove** rises as a unique residential project of Mediterranean lines - an urban oasis where architecture, light and landscape exist in perfect synergy.

A setting that combines luxury homes with the amenity experience of a **five-star resort**, in a strategic location, just a short walk from the beach, subtly bridging real life with contemporary luxury.

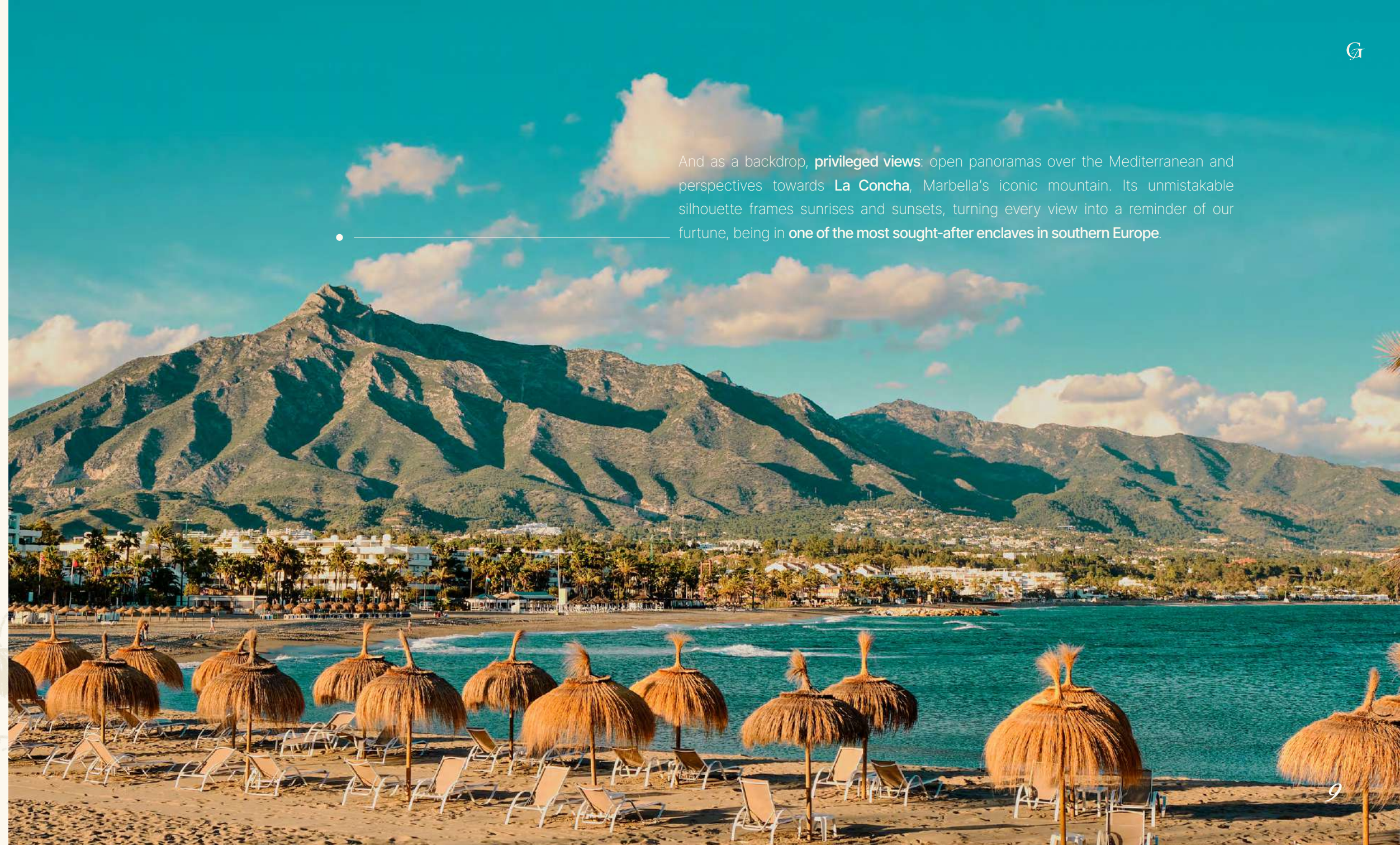
Comprising **139 residences** across **three typologies** under the **Urban Resort Living** concept, everything at The Grove is conceived with meticulous care as part of an one-of-a-kind community.

The residential experience is completed by a lasting sense of tranquillity and confidence, supported by **advanced 24/7** security, and cutting-edge **Smart Living** technology.

Let yourself be drawn into a truly distinctive way of life on the Costa del Sol - and discover the finest expression of residential living that only **The Grove** can offer.

## MARBELLA WEST A MEDITERRANEAN ENCLAVE CONNECTED TO THE WORLD

You can find **The Grove** in the new and exciting district of **Marbella West**, a rapidly evolving area that reflects Marbella's signature sophistication. A unique setting **surrounded by more than 300 premium residences and a future hotel**, where modern urban planning and state-of-the-art infrastructure are shaping **a new residential benchmark on the Costa del Sol**. Meticulously finished pavements, well-defined public spaces and detailing that echoes the Mediterranean landscape — designed for a cosmopolitan resident.



And as a backdrop, **privileged views**: open panoramas over the Mediterranean and perspectives towards **La Concha**, Marbella's iconic mountain. Its unmistakable silhouette frames sunrises and sunsets, turning every view into a reminder of our fortune, being in **one of the most sought-after enclaves in southern Europe**.



## MARBELLA : EXCLUSIVITY AND SOPHISTICATION

**Marbella** is charm, coastline and a way of life that blends elegance, cultural heritage and vibrant energy without losing its authenticity. From **The Grove**, the Mediterranean is close enough to make the beach and seaside promenade part of an extraordinary everyday routine.

The location offers a **truly privileged living radius**: beach clubs, international schools, leading healthcare centres, tennis and padel courts, gyms and high-performance training facilities, renowned golf courses, a marina and nautical experiences - all just minutes away. Added to this is an advantage that is hard to match: **a 10-minute walk to the beach**, where residents can also enjoy **an exclusive sunbed area just for them**.

**Puerto Banús**, just 5 minutes by car, brings that unmistakable international marina atmosphere — iconic yachts, luxury shopping, and on the **Golden Mile**, a vibrant selection of restaurants and bars where social life unfolds in one of the most coveted settings. Everyday convenience is equally close at hand, with amenities that make life effortless: shops, dining and key points in **San Pedro Alcántara and Guadalmina**, as well as international schools such as **Laude International College**, just a few minutes away.

## THE MOST PRESTIGIOUS GOLF COURSES

And if there is one identity that defines the Costa del Sol, it is its active lifestyle. **Golf lovers** will find some of Spain's most prestigious courses — immaculate fairways stretching towards the horizon — such as **Real Club de Golf Guadalmina, Los Naranjos, Aloha and Las Brisas** just a few minutes away. Added to this are padel clubs and sports centres like **Real Club de Pádel** or **The I/O**, as well as mountain routes for nature lovers, offering viewpoints over Marbella's distinctive coastline as the perfect finale to a day of trekking.

With direct **access to the A-7 and AP-7** from the development, **Málaga** is just over half an hour away by car - expanding the region's cultural and



historical dimension with icons such as the Alcazaba, the Málaga Cathedral, the Picasso Museum and the Centre Pompidou. The city is also emerging as a growing technology hub in Spain and Europe, supported by outstanding international connectivity through Málaga Airport, with more than 130 direct flights to global destinations.

Last but not least, what truly makes this place exceptional is **an admirable climate all year round**. It invites you to sail along its 28+ kilometres of coastline, enjoy sunrises and sunsets—often with dolphin sightings—and swim in beaches awarded the Blue Flag distinction.

Here, every plan flows seamlessly into the next, and that effortless flow is part of **The Grove** essence.



GIBRALTAR

ESTEPONA

HOSPITEN

GUADALMINA ROYAL GOLF CLUB

SAN PEDRO GOLF CLUB

BENAHAVÍS

The Grove  
MARBELLA WEST

ROYAL PADEL CLUB

PUERTO BANÚS

PUENTE ROMANO

MARBELLA CLUB

MARBELLA OLD TOWN

TORREMOLINOS

BENALMÁDENA

MÁLAGA

THE I/O

LAUDE INTERNATIONAL COLLEGE

SAN PEDRO PROMENADE

## AN URBAN OASIS WITH THE EXPERIENCE OF A FIVE-STAR RESORT

**The Grove** is conceived as a Mediterranean sanctuary where everything is experienced as one: contemporary architecture, **light and landscape** woven into a single narrative. Life unfolds to a **luxury resort standard**, with a full-service lifestyle that makes it truly distinctive - wellbeing, social and personal life, sport and work coexisting with effortless ease.

Across **139 residences**, the architecture follows one clear principle: **light first**. Interiors extend naturally outdoors, welcoming the Mediterranean into every home. This experience reaches all the way from your home to the shoreline, with **an exclusive sunbed area on San Pedro Alcántara beach**, where residents can easily enjoy the sea breeze with ease and comfort.

**Three typologies** define the homes: **Signature Residences, Iconic Residences and Sky Villas**, with **private outdoor pools** in the latter two, reinforcing the sense of an intimate retreat.

**The Grove** also offers its residents **four saltwater pools: a garden-level pool, an indoor lap pool, a hydromassage pool, and the infinity pool at the Rooftop Lounge** - inviting you to immerse yourself in the Mediterranean essence from home. That same coherence is echoed in **the landscaping, designed by the renowned Laura Pou Studio**: carefully curated vegetation that accompanies every journey, creates natural shade and reinforces the oasis feeling throughout the development.

The experience is completed with **five-star resort-style amenities** that enhance a privileged lifestyle: a **Wellness Hub, Fitness Centre, Business Hub, Social Life spaces, a Kids' Room and a Pet Spa**. **Advanced 24/7 security and Smart Living technology** complement **The Grove**, ensuring the comfort and peace of mind of its residents tranquilidad de sus residentes.

# WELCOME TO *The Grove*





FURNISHED BY

GIANFRANCO  
**FERRE**  
HOME

FURNISHED BY GIANFRANCO FERRE' HOME

We present a special collaboration with **GIANFRANCO FERRE' HOME**, an international icon of design and timeless elegance, framing the essence of **The Grove**.

Globally known as the **"architect of fashion"**, **GIANFRANCO FERRE' HOME** was distinguished by an architectural sensibility, mastery of proportion and a vision of luxury rooted in materiality, tone and impeccable execution. That legacy lives on through the **GIANFRANCO FERRE' HOME** universe applied to **interiors**, creating a visual language that resonates with **The Grove's** contemporary architecture: a refined palette, noble textures and a balance between character and calm. The result is an elevated residential atmosphere, an elegance that is not defined by trends, but by the quality with which each space is lived.



“Furnished by GIANFRANCO FERRE’ HOME”, a signature that brings a recognisable, serene, precise and sophisticated perspective, reinforcing **The Grove’s** character as a residential development designed for those who value aesthetic coherence, quality and attention to detail.

# MEDITERRANEAN ARCHITECTURE WITH SOUL

Between gardens and contemporary lines, **The Grove** rises. The project brings together **privacy, comfort and Mediterranean character**, in a setting designed to be lived from a place of calm.

Its architecture is shaped by one clear principle: **natural light first**. Carefully studied **layout and orientation** enhance this presence throughout the day, while encouraging **natural cross ventilation** that improves comfort and helps reduce reliance on artificial climate control.



This vision is completed by an enduring, contemporary materiality, expressed through a soft Mediterranean palette - sands, light stone and warm woods - paired with finishes aligned with the standards of the finest villas and luxury buildings on the Costa del Sol.

That is why the exterior is defined by **generous, integrated terraces that extend the living areas**, and by large openings that allow the Mediterranean to enter every room.

The extensive outdoor spaces are accompanied by **landscaping meticulously conceived by the renowned Laura Pou Studio**. Carefully selected native species bring natural beauty and a constant sense of a Mediterranean oasis.

# TERRACES AS AN EXTENSION OF THE HOME

At **The Grove**, terraces are a natural extension of the home - spacious, light-filled and designed to enjoy the outdoors in complete privacy. In certain residence types, such as the **Iconic Residences and Sky Villas**, this experience is elevated further with the privilege of a **private outdoor pool**.





## LIGHT, AIR AND CALM

The terraces at **The Grove** open each home to the Mediterranean - more light, more air, and a deeper sense of calm. Designed for breakfast alfresco, shared sunsets and an outdoor lifestyle that becomes part of everyday living. The perfect setting for unforgettable moments: gathering with friends, spending the day by the pool, greeting the sunrise, or simply unwinding beneath the stars.

# NATURE AS THE FOUNDATION

The landscaping at **The Grove**, designed by **Laura Pou**, transforms the outdoor areas into an experiential journey where nature is the protagonist, not mere decoration. Integrated pathways connect the various amenities and encourage a walkable lifestyle, so everything can be enjoyed on foot within the community.



ARCHONTOPHOENIX ALEXANDRAE

QUISQUALIS INDICA



CALAMAGROSTIS ACUTIFLORA

DATURA ARBOREA



MURRAYA PANICULATA

## LAYERED BOTANY

A balanced selection of Mediterranean and tropical species allows for a lush landscape throughout the year, adding richness and visual depth while creating natural shade and a pleasant microclimate within The Grove.

The landscaping is further supported by an intelligent and efficient irrigation system that optimises consumption and adapts to the Mediterranean climate. The result is a constant oasis feel where nature hugs every space, accompanies you through every stroll and shows through the views of every home - making nature the foundation of your everyday life.



## NATURAL LIGHT AS THE DEFINING ELEMENT

Inside every residence at **The Grove**, quality speaks: **designer kitchens** with premium cabinetry and high-end appliances; **bathrooms** with designer fittings and top-tier materials; and **high-quality flooring** that unifies indoor and outdoor areas, enhancing the sense of openness. The layout flows naturally towards the terraces, reinforcing that Mediterranean continuity between inside and out.

In addition, among other possibilities, there is the option to integrate **Smart Living technology** through optional home automation systems, allowing key home functions — such as climate control, lighting, blinds, etc. — to be managed centrally and remotely.

The homes also include pre-installations designed to accommodate future technological solutions without the need for invasive works.



UNDERSTATED  
ELEGANCE

## SALONES

Amplios, luminosos y en equilibrio, los **salones** en **The Grove** se conciben como el gran escenario de la vivienda. Los ventanales de gran tamaño abren el interior hacia la terraza, incorporando el exterior como parte natural del día a día y dejando que el paisaje acompañe cada momento. Materiales de alta calidad, proporciones cuidadas y una atmósfera serena crean un ambiente tan sofisticado como acogedor, pensado para compartir, descansar y vivir con plenitud.



THE HEART  
OF THE HOME



CRAFTED FOR  
SERENITY

## BEDROOMS

The bedrooms are **private retreats** where everything invites rest. The layout protects intimacy and **clearly separates day and night areas**, while a palette of soft tones and impeccable finishes creates a sense of order, calm and comfort. A place designed to sleep well, rise better, and reconnect in tranquility.

# DESIGN IN EVERY DETAIL

## KITCHENS

The kitchen brings together functionality and aesthetics with impeccable execution: **premium cabinetry**, superior-quality materials and **high-end appliances** that elevate the everyday. Integrated or semi-open, it connects naturally with the living area to accompany family life and gatherings. Precisely designed, with every element chosen to endure and to be enjoyed.





A RITUAL  
OF WELLBEING

BATHROOMS

The **bathrooms** turn the everyday into a serene experience. Designer fittings, high-quality materials and carefully selected finishes create a clean, balanced and comfortable atmosphere - where everything is conceived for personal care. A minimal and elegant interior design that conveys calm from the very first moment.



## FIVE-STAR RESORT AMENITIES

Living at **The Grove** is settling into your own rhythm - the rhythm of a **luxury, full-service resort lifestyle**, where wellbeing, social life, training and work flow together naturally, without ever leaving the community. All of it framed by **privileged views** over the **Mediterranean** and towards **La Concha**, Marbella's most recognisable silhouette.



## A MEDITERRANEAN SANCTUARY

# WATER, MOVEMENT AND CALM



#### 4 SALTWATER POOLS

Water is conceived as an extension of the Mediterranean within **The Grove**: **four saltwater pools** - a **garden-level pool**, an **indoor lap pool**, a **hydromassage pool**, and the **infinity pool at the Rooftop Lounge** - each designed to accompany different rhythms of the day. Swim lengths and training to stay in shape; moments of pause and recovery in the hydromassage pool with pressure jets; and, at the Rooftop Lounge, an infinity pool that merges like a sheet of water with the horizon, inviting you to enjoy the sun, the views and the sea breeze from an elevated setting.





# HOLISTIC WELLBEING

## WELLNESS HUB

At the heart of **The Grove** lies the **Wellness Hub**, a refuge dedicated to residents' physical and mental balance, designed to step away from the pace of daily life. A professional spa at home, created to slow down and restore the body through a complete circuit: the traditional **sauna** eases muscular tension and clears the mind; the **steam bath** releases stress and supports breathing; and the **indoor lap pool** allows year-round training.



The experience is completed by a cold plunge for thermal contrast and circulatory activation, a red light therapy lamp (phototherapy) focused on recovery and rest, and a hydromassage pool with pressure jets - raising the personal care ritual to true resort level, within the residential community itself.

## FITNESS CENTER

The **Fitness Center** at **The Grove** is conceived as a premium space to train, stay in shape and recover - within the ease of a refined, well-equipped setting. It features state-of-the-art **equipment from leading brands**, from **high-performance treadmills**, **advanced stationary bikes** to **rowing machines**, alongside **vibration platforms** designed for functional training and recovery. A dedicated **weights area** that supports strength and toning, complemented by spaces for **stretching, yoga or personal training**.



AN ACTIVE,  
HEALTHY LIFESTYLE



# PROFESSIONAL LIFE

## BUSINESS HUB

A professional and peaceful environment can be found in the **Business Hub**, designed for residents to work comfortably from within their own community without the need to commute.

The space offers **work areas** created to support concentration and remote working, as well as

**areas for informal meetings** and a **waiting area with a boutique hotel aesthetic**, designed to welcome visitors in a refined and professional setting.

In this way, the workspace integrates naturally into the community's everyday life, supporting its daily routines and dynamics.

# SHARING EXPERIENCES

## SOCIAL LIFE

**Social Life** at **The Grove** is a private everyday club - versatile and elegant, designed to adapt to any plan, from informal meet-ups to relaxed afternoons of leisure. It includes a **cinema screen**, a **café-style area**, **billiards and a bar** to gather and unwind, as well as a **sports corner** with a large screen. A dedicated room features a contemporary **leisure simulator** offering a wide range of activities, including virtual **golf, football, basketball, bowling, hunting, karaoke, yoga and meditation**. A true connection point within the community, turning free time into experience.



## A WHOLE WORLD FOR THE LITTLE ONES



### KIDS ROOM

Designed with families in mind, the **Kids Room** is a safe and creative space where children can play, socialise and let their imagination run free. Thoughtfully planned to make everyday life easier for parents, it offers dedicated areas for different stages of childhood. A carefully curated environment where children can play at their own pace, while adults make the most of the rest of the community with complete peace of mind.

## PREMIUM CARE FOR FURRY FRIENDS



### PET SPA

At **The Grove**, even pets have dedicated space. The **Pet Spa** makes grooming and care effortless within the community itself - reinforcing the project's pet-friendly character and reflecting the needs of today's modern urban families.

## ROOFTOP LOUNGE

On the top floor of **The Grove**, the **Rooftop Lounge** becomes the perfect place to enjoy the last rays of sun settling over the sea, and the colours change over **La Concha**, cutting a striking silhouette against the skyline. A saltwater **infinity pool** invites you to cool off with open views of the Mediterranean - almost as a natural continuation of the sea itself. Nearby, a chill-out sunbed **solarium** accompanies rest, reading and sunset contemplation.

To one side, a **dedicated yoga and meditation area** completes the wellbeing experience with a serene corner for individual practice or small-group sessions. The rooftop becomes an adults-only setting, wrapped in nature, where every day ends facing the Mediterranean.

A woman in a dark athletic outfit is sitting in a meditative pose on a circular wooden deck. The deck is surrounded by a glowing yellow light strip and several cylindrical lanterns. In the background, a cityscape and mountains are visible under a sunset sky. The text 'A PRIVATE HORIZON, EXCLUSIVELY YOURS' is overlaid on the right side of the image.

A PRIVATE HORIZON,  
EXCLUSIVELY YOURS



# WELLBEING CONTINUES BY THE SEA

## SUNBED AREA ON THE BEACH

At **The Grove**, the resort experience does not end within the community, it extends all the way to the shoreline. An exclusive **sunbed area on San Pedro Alcántara beach** is conceived as a natural continuation of its rest and wellness spaces, designed to slow down, sunbathe, or simply let

time pass while gazing at the Mediterranean from the comfort of a lounge. A carefully curated, private corner that maintains the same standard of comfort that defines the development, so wellbeing flows without interruption: from the spa to the sea, from the pool to the horizon.

# THE LUXURY OF PEACE OF MIND



## ADVANCED 24/7 SECURITY

At **The Grove**, security is felt with discretion, an invisible support that accompanies everyday life and allows you to enjoy the community with true peace of mind, 24 hours a day, 365 days a year. The development is organised around **a single controlled access point**, strengthening perimeter control, and a **permanent concierge service** that serves as a reference point for residents and visitors, bringing order, assistance and a constant on-site presence.

This is complemented by state-of-the-art security **technology with AI integration**, enabling smarter, more efficient monitoring, designed to anticipate and optimise the management of the full community. **In selected homes**, there is also **the option to include an electrical generator**, reinforcing resilience and continuity of service. Everything works quietly in the background towards one goal: ensuring the building supports comfort, efficiency and, above all, security.





# The Grove

139 LUXURY RESIDENCES

URBAN RESORT LIVING

LIGHT-FIRST ARCHITECTURE

TERRACES WITH PRIVATE POOLS IN SELECTED RESIDENCES

ADVANCED 24/7 SECURITY

FOUR SALTWATER POOLS

LANDSCAPING BY LAURA POU

WELLNESS HUB & FITNESS CENTER

BUSINESS HUB & SOCIAL LIFE

ROOFTOP LOUNGE

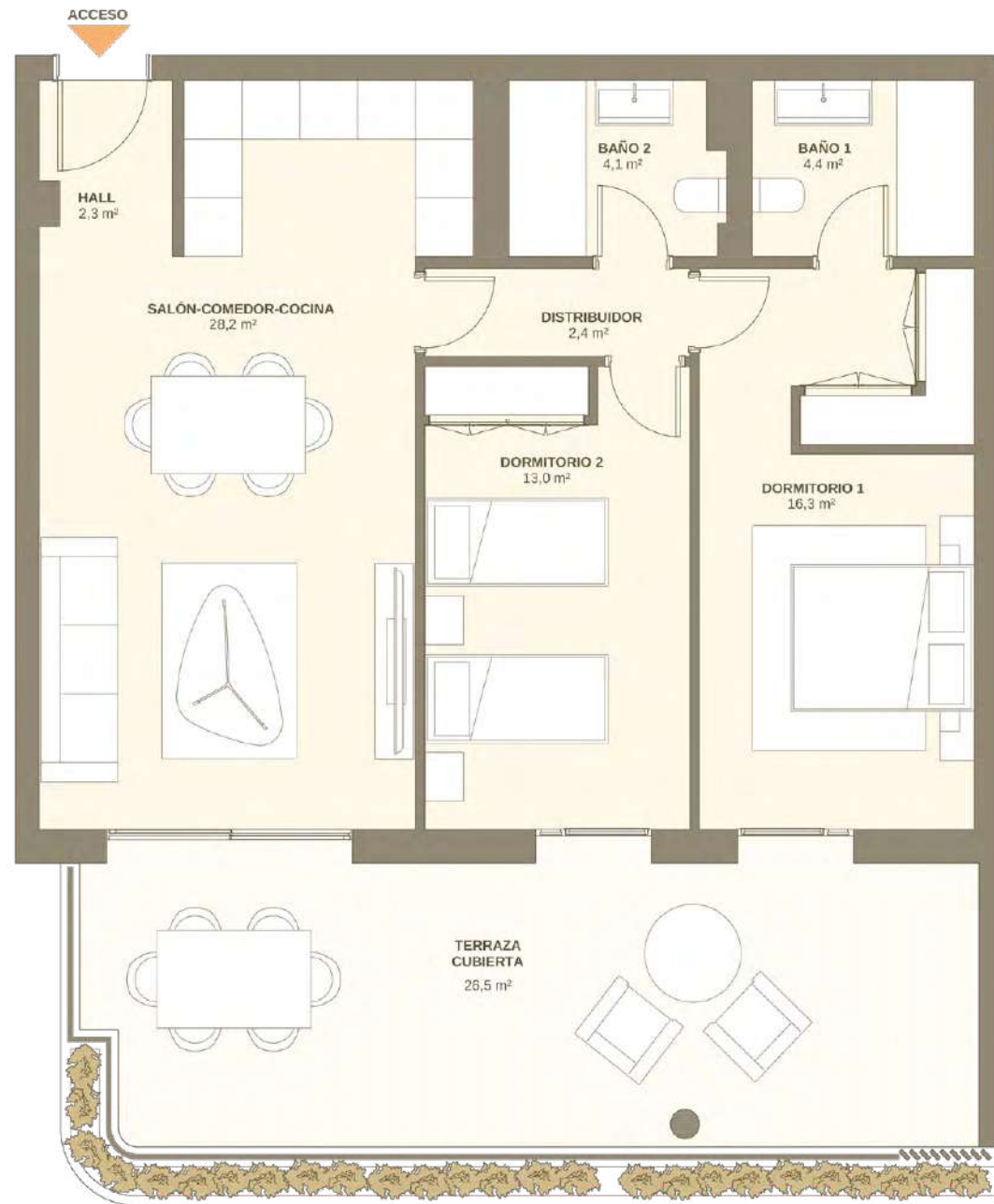
KIDS ROOM

PET SPA

SUSTAINABILITY AND EFFICIENCY

TECHNOLOGY & SMART LIVING

PRIVATE SUNBED AREA ON THE BEACH



## SIGNATURE RESIDENCE

### Surfaces

Interior usable area	70,1 m <sup>2</sup>
Interior built area + common areas share	26,5 m <sup>2</sup>
Exterior usable area	100,2 m <sup>2</sup>

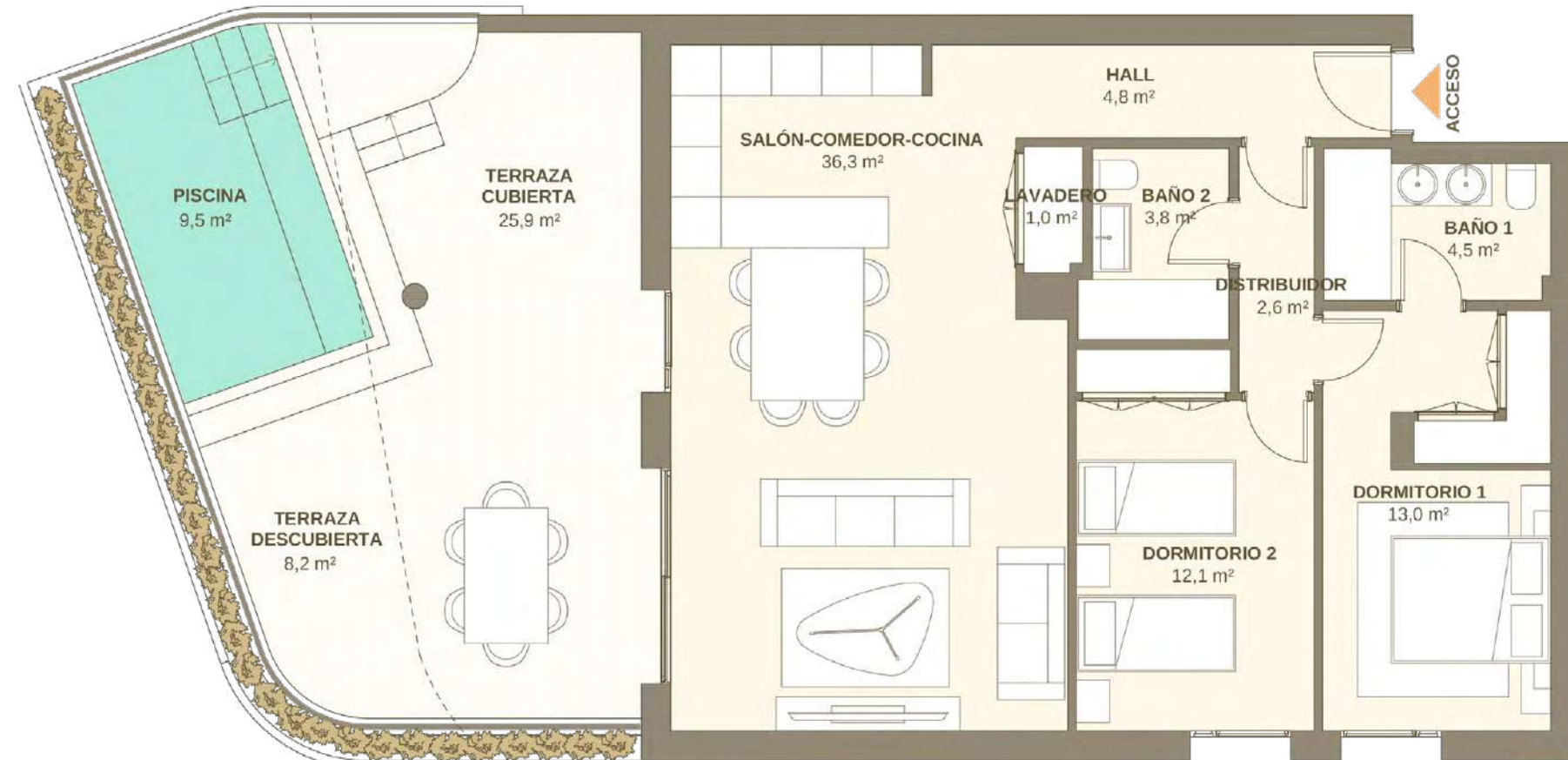
### DIA Surfaces (Decree 218/2005)

Usable area	77,1 m <sup>2</sup>
Built area + common areas share	108,3 m <sup>2</sup>

### Property orientation



**1, 2 and 3-bedroom homes** designed for effortless living: generous living areas that open onto **spacious terraces**, integrated or semi-open kitchens, and a constant sense of flow between indoors and outdoors. Efficient layouts and open-plan spaces make everyday life easy - whether as a permanent residence or for short or extended stays in Marbella. In selected units, an **outdoor kitchen** can be added as a customisation.



## ICONIC RESIDENCE

### Surfaces

Interior usable area	78,1 m <sup>2</sup>
Interior built area + common areas share	43,6 m <sup>2</sup>
Exterior usable area	113,2 m <sup>2</sup>

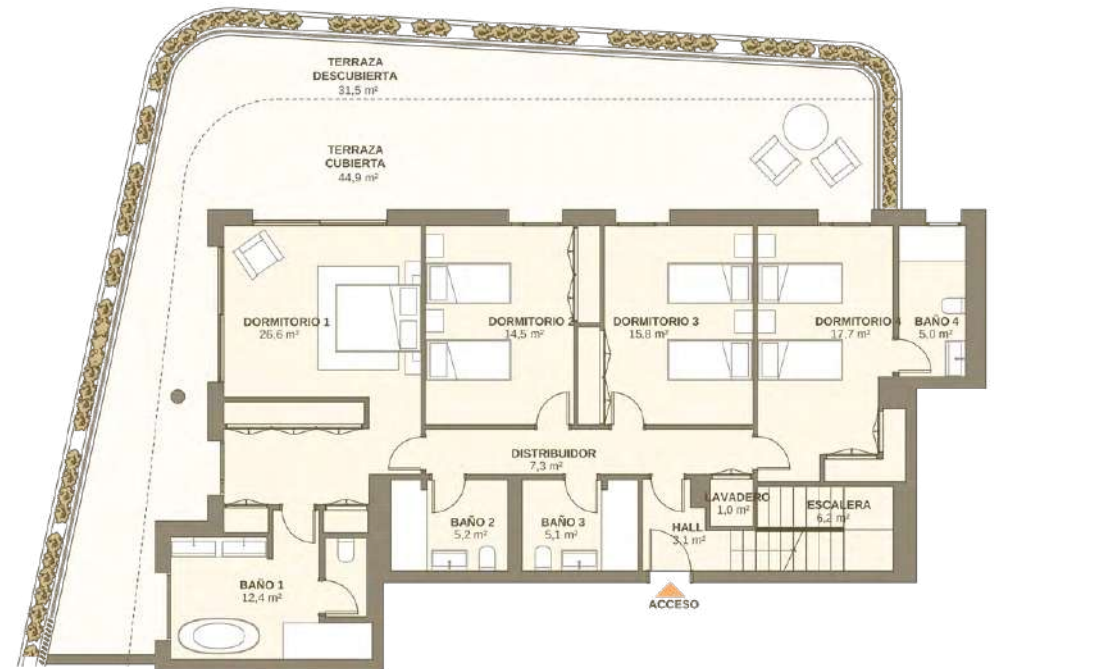
### DIA Surfaces (Decree 218/2005)

Usable area	85,9 m <sup>2</sup>
Built area + common areas share	122,3 m <sup>2</sup>

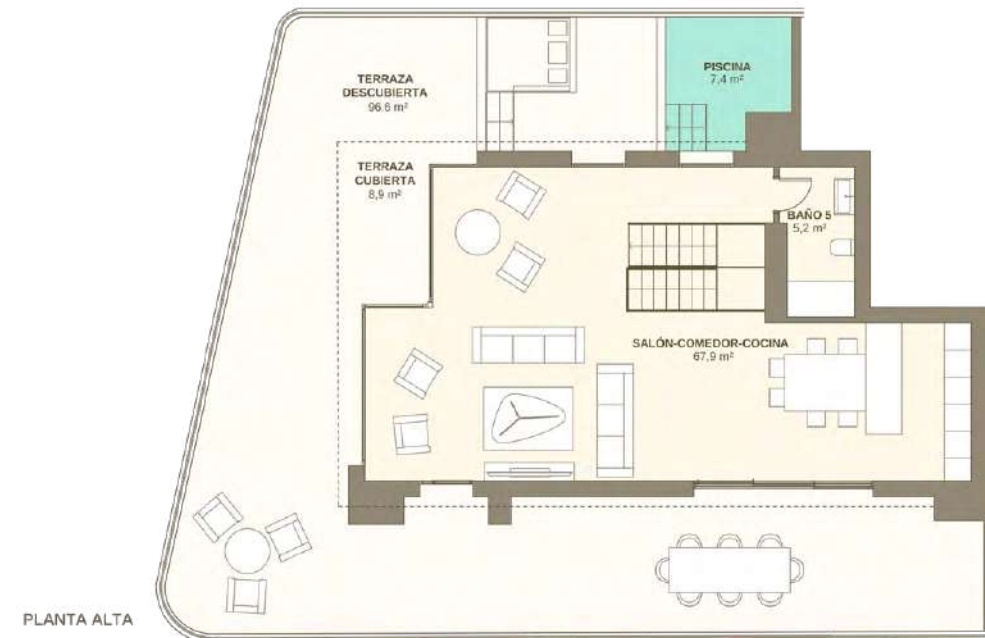
### Property orientation



Located on the corners of the development, these **single-level homes** are planned to enhance spaciousness and natural light, with extra large terraces open to the outdoors - made to enjoy the Mediterranean climate every day. Each home features a **private pool** integrated into the exterior, offering outdoor living with privacy and serenity. In selected units, an **outdoor kitchen** can be added as a customisation.



PLANTA BAJA



PLANTA ALTA

## SKY VILLA

### Surfaces

Interior usable area	193,0 m <sup>2</sup>
Interior built area + common areas share	189,3 m <sup>2</sup>
Exterior usable area	296,0 m <sup>2</sup>

### DIA Surfaces (Decree 218/2005)

Usable area	212,3 m <sup>2</sup>
Built area + common areas share	319,9 m <sup>2</sup>

### Property orientation



Duplex penthouses conceived as true private rooftops: **expansive terraces, a solarium and a private pool in every home, with open views over the Mediterranean and towards La Concha.**

Outdoor areas designed for gathering, relaxing and celebrating alfresco, with lounge and dining areas - plus an outdoor kitchen available as a customisation in all Sky Villas, bringing the Mediterranean lifestyle to its fullest expression.

# A SHARED VISION, A COMMON STANDARD



**PRAXFER**  
HOMES

## THE TEAM

The Grove is the result of a team aligned around one idea: to create a unique contemporary residential community where architecture, construction and landscape come together with coherence, rigour and Mediterranean sensitivity. From concept to execution, every decision responds to an elevated standard of quality - designed to endure and to be enjoyed every day.

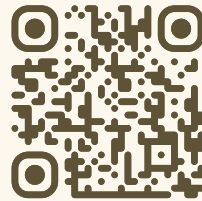
As the developer, Praxfer leads the project's vision, a residential concept with an international outlook, meticulous attention to detail and a clear focus on the quality of the development - its urban setting, design, amenities and lifestyle experience.

ARCHITECTURE   LANDSCAPING   FURNISHED BY   SALES & MARKETING



# *The Grove*

MARBELLA WEST



[thegrovemarbella.com](https://thegrovemarbella.com)

+34 951 55 99 77 | Avenida Oriental nº 25, 29670, Marbella, Málaga | [info@thegrovemarbella.com](mailto:info@thegrovemarbella.com)

*All images, renders, floor plans and infographics are provided for illustrative purposes only and are non-contractual.  
Specifications may be subject to change for technical, commercial or legal reasons.*

VERSION 1 - JUNE 2026